

DRAWING NUMBER

001327

PLAN HOLD CORPORATION • IRVINE, CALIFORNIA

REORDER BY NUMBER 075AR

POSITION EDGE OF PRINT ON THIS LINE

DRAWING NUMBER

001327

PLAN HOLD CORPORATION • IRVINE, CALIFORNIA

REORDER BY NUMBER 075AR

POSITION EDGE OF PRINT ON THIS LINE

DRAWING NUMBER

001327

PLAN HOLD CORPORATION • IRVINE, CALIFORNIA

REORDER BY NUMBER 075AR

POSITION EDGE OF PRINT ON THIS LINE

DRAWING NUMBER

001327

PLAN HOLD CORPORATION • IRVINE, CALIFORNIA

REORDER BY NUMBER 075AR

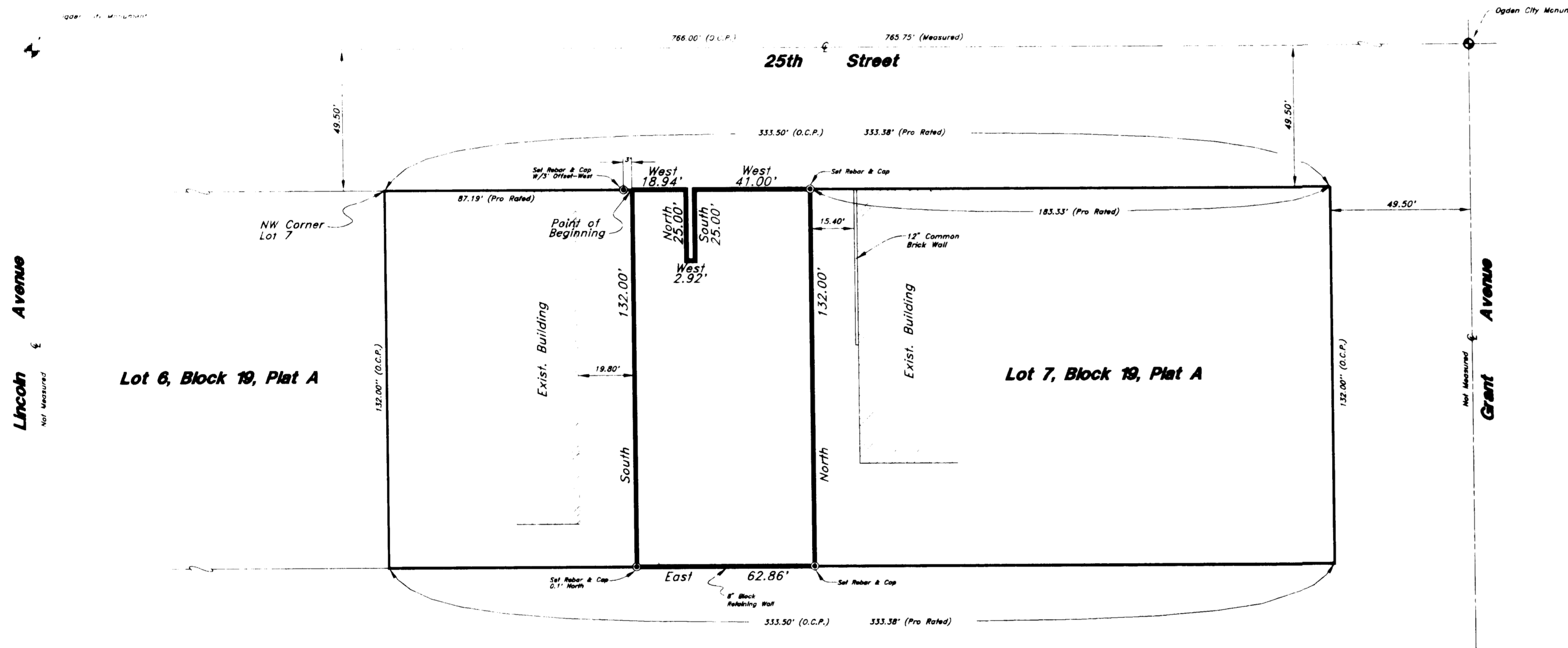
POSITION EDGE OF PRINT ON THIS LINE



Scale : 1" = 30'

Legend

- Set Rebar & Cap w/ Fencepost
- ⊕ Monument



Narrative

This Survey was requested by Ron Remkes of Big 'D' Construction for the Lease Holder. The legal description did not close in a East/West direction by 0.78 feet and the East line of the description was found to overlap the adjacent parcel by 0.96 feet. The East line was therefore moved West 0.96 feet to eliminate the overlap. All descriptions in Lots 6 and 7, Block 19, Plat 'A', Ogden City Survey, were reviewed to arrive at this conclusion. A shortage of 0.25 feet was found between the monuments on 25th Street and the shortage was prorated.

Description

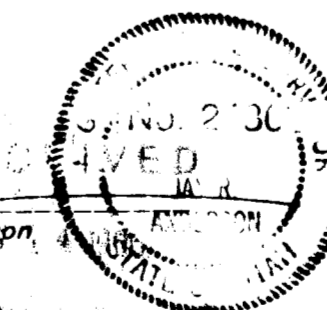
A part of Lot 7, Block 19, Plat A, Ogden City Survey, Weber County, Utah:  
 Beginning at a point 87.22 feet (87.19 feet prorated) East of the Northwest Corner of said Lot 7; and running thence South 8 Rods (132 feet); thence East 62.86 feet; thence North 132 feet; thence West 41 feet; thence South 25 feet; thence West 2.92 feet; thence North 25 feet; thence West 18.94 feet to the place of beginning.

Certification

I, Jay R. Anderson, do hereby certify that I am a Registered Land Surveyor, and that I hold Certificate No. 2430, as prescribed by the Laws of the State of Utah and I have made a survey of the above described property. I further certify that this plat correctly shows the true dimensions of the property surveyed.

DATE 4-26-96

*J. R. Anderson*  
 Jay R. Anderson  
 Weber County Surveyor



RECEIVED  
 APR 14 1996  
 Weber County Surveyor

<b>Property Survey</b>		<b>Big-D Construction</b> Ampco Parking Lot Project	
GREAT BASIN ENGINEERING, INC. CONSULTING ENGINEER and SURVEYOR 3544 Lincoln Avenue, Ogden, Utah, 84401 P.O. Box 9307, Ogden, Utah, 84409 <small>Ogden (801)304-8818 Salt Lake City (801)581-8888 Fax (801)304-7044</small>		DATE : 25 Apr, 1996	REVISIONS :
		DRAWN : BM	DRAW. NO. 1
		SCALE : 1" = 30'	

