

DRAWING NUMBER

001341

DRAWING NUMBER

001341

DRAWING NUMBER

001341

DRAWING NUMBER

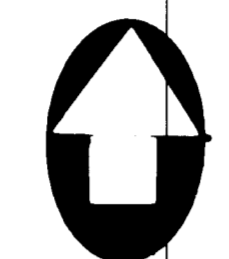
001341

PLAN HOLD CORPORATION • IRVINE, CALIFORNIA  
REORDER BY NUMBER 07544

PLAN HOLD CORPORATION • IRVINE, CALIFORNIA  
REORDER BY NUMBER 07544

PLAN HOLD CORPORATION • IRVINE, CALIFORNIA  
REORDER BY NUMBER 07544

PLAN HOLD CORPORATION • IRVINE, CALIFORNIA  
REORDER BY NUMBER 07544



SCALE 1"=20'

JAY GAVIN

ALL OF LOT 14, BLOCK 7, WASHINGTON TERRACE PLAT D AMENDED ACCORDING TO THE OFFICIAL PLAT THERE OF.

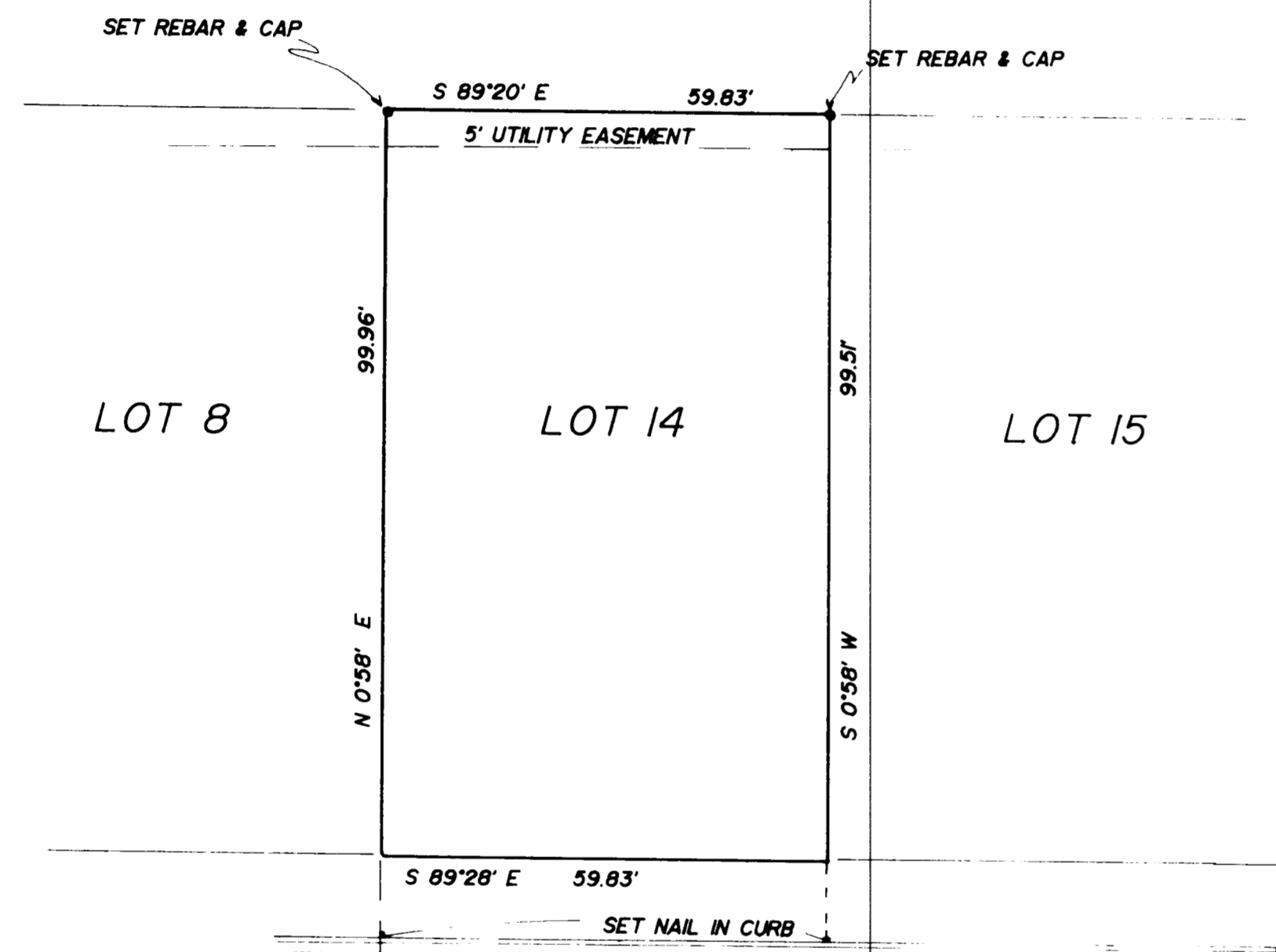
NARRATIVE

THIS SURVEY WAS DONE TO MARK THE PROPERTY PRIOR TO CONSTRUCTION OF A FENCE. THE SECTION CORNERS AND STREET MONUMENTS SHOWN WERE LOCATED AND USED FOR SURVEY CONTROL AND BASIS OF BEARINGS.

I GLENN RAVENBERG DO HEREBY CERTIFY THAT I AM A REGISTERED LAND SURVEYOR, AND THAT I HOLD CERTIFICATE NO. 3835 AS PRESCRIBED BY THE LAWS OF THE STATE OF UTAH, AND I HAVE MADE A SURVEY OF THE ABOVE DESCRIBED PROPERTY. I, FURTHER CERTIFY THAT THE ABOVE PLAT CORRECTLY SHOWS THE TRUE DIMENSIONS OF THE PROPERTY SURVEYED.

AUG 25, 1994

*Glenn Ravenberg*  
GLENN RAVENBERG



LOT 8

LOT 14

LOT 15

300 WEST ST.

200 EAST ST.

S.E. COR. OF SEC. 8,  
T3N, R1W, SLB&M  
( FOUND MON. )

1290.78'

FOUND MONUMENT

S 89°28' E ( BEARING BASE )

N 0°58' E  
33.00'

5800 SO. ST.

3205.77 MEAS 3206.01 REC

894.33 MEAS 894.40 REC

556.73'

SOUTH 1/4 COR. OF  
SEC. 8, T3N, R1W,  
SLB&M  
( FOUND MONUMENT )

FOUND MONUMENT

RECORDED

MAY 24 1996

Wade County Surveyor

**INTERMOUNTAIN SURVEYING**  
 Layton, Utah 84041 (801) 544-1170  
**PROPERTY SURVEY**  
 FOR  
**JAY GAVIN**  
 LOT 14, BK 7, WASHINGTON TERRACE PLAT D AMENDED  
 AUG 25, 1994 1"=20' PS-94-72

001341