

DRAWING NUMBER
001342

PLAN HOLD CORPORATION • IRVINE, CALIFORNIA
REORDER BY NUMBER 075AR
POSITION EDGE OF PRINT ON THIS LINE

DRAWING NUMBER
001342

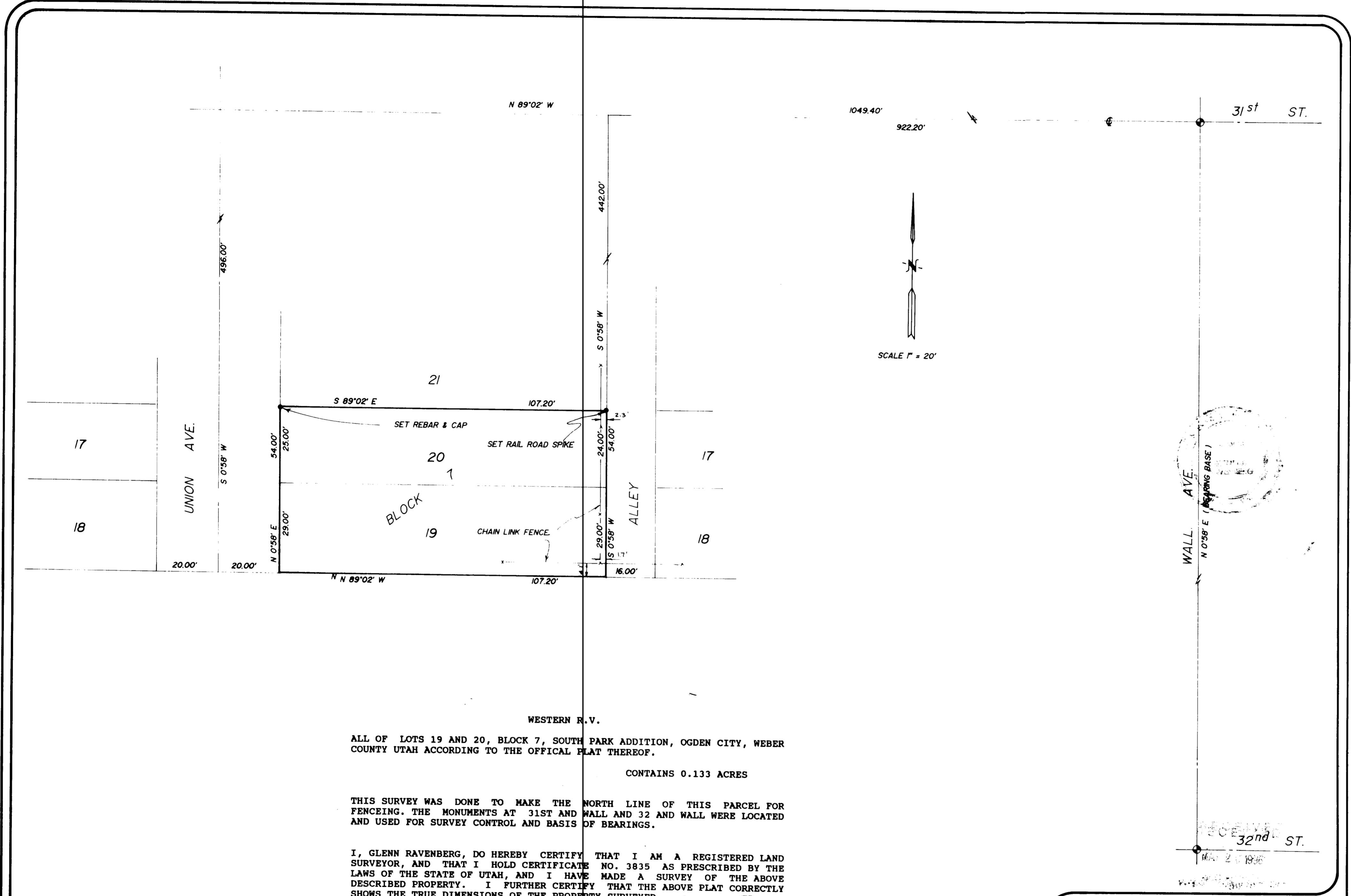
PLAN HOLD CORPORATION • IRVINE, CALIFORNIA
REORDER BY NUMBER 075AR
POSITION EDGE OF PRINT ON THIS LINE

DRAWING NUMBER
001342

PLAN HOLD CORPORATION • IRVINE, CALIFORNIA
REORDER BY NUMBER 075AR
POSITION EDGE OF PRINT ON THIS LINE

DRAWING NUMBER
001342

PLAN HOLD CORPORATION • IRVINE, CALIFORNIA
REORDER BY NUMBER 075AR
POSITION EDGE OF PRINT ON THIS LINE



WESTERN R.V.
 ALL OF LOTS 19 AND 20, BLOCK 7, SOUTH PARK ADDITION, OGDEN CITY, WEBER COUNTY UTAH ACCORDING TO THE OFFICAL PLAT THEREOF.
 CONTAINS 0.133 ACRES

THIS SURVEY WAS DONE TO MAKE THE NORTH LINE OF THIS PARCEL FOR FENCEING. THE MONUMENTS AT 31ST AND WALL AND 32 AND WALL WERE LOCATED AND USED FOR SURVEY CONTROL AND BASIS OF BEARINGS.

I, GLENN RAVENBERG, DO HEREBY CERTIFY THAT I AM A REGISTERED LAND SURVEYOR, AND THAT I HOLD CERTIFICATE NO. 3835 AS PRESCRIBED BY THE LAWS OF THE STATE OF UTAH, AND I HAVE MADE A SURVEY OF THE ABOVE DESCRIBED PROPERTY. I FURTHER CERTIFY THAT THE ABOVE PLAT CORRECTLY SHOWS THE TRUE DIMENSIONS OF THE PROPERTY SURVEYED.

FEB. 7, 1995

Glenn Ravenberg
 GLENN RAVENBERG
 REGISTERED LAND SURVEYOR
 No. 3835
 GLENN A. RAVENBERG
 State of Utah

RECEIVED
 MAY 20 1996
 Weber County Surveyor

INTERMOUNTAIN SURVEYING
 Layton, Utah 84041 (801) 544-1170
 PROPERTY SURVEY
 FOR
 WESTERN TRUCK & RV
 ALL OF LOTS 19 & 20, BLOCK 7, SOUTH PARK ADDITION
 FEB. 7, 1995 1"=20' PS-95-02

001342