

DRAWING NUMBER
001344

PLAN HOLD CORPORATION • IRVINE, CALIFORNIA
REGISTERED BY NUMBER 07540
POSITION EDGE OF PRINT ON THIS LINE

DRAWING NUMBER
001344

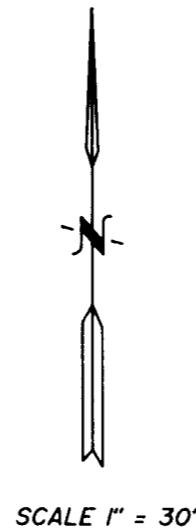
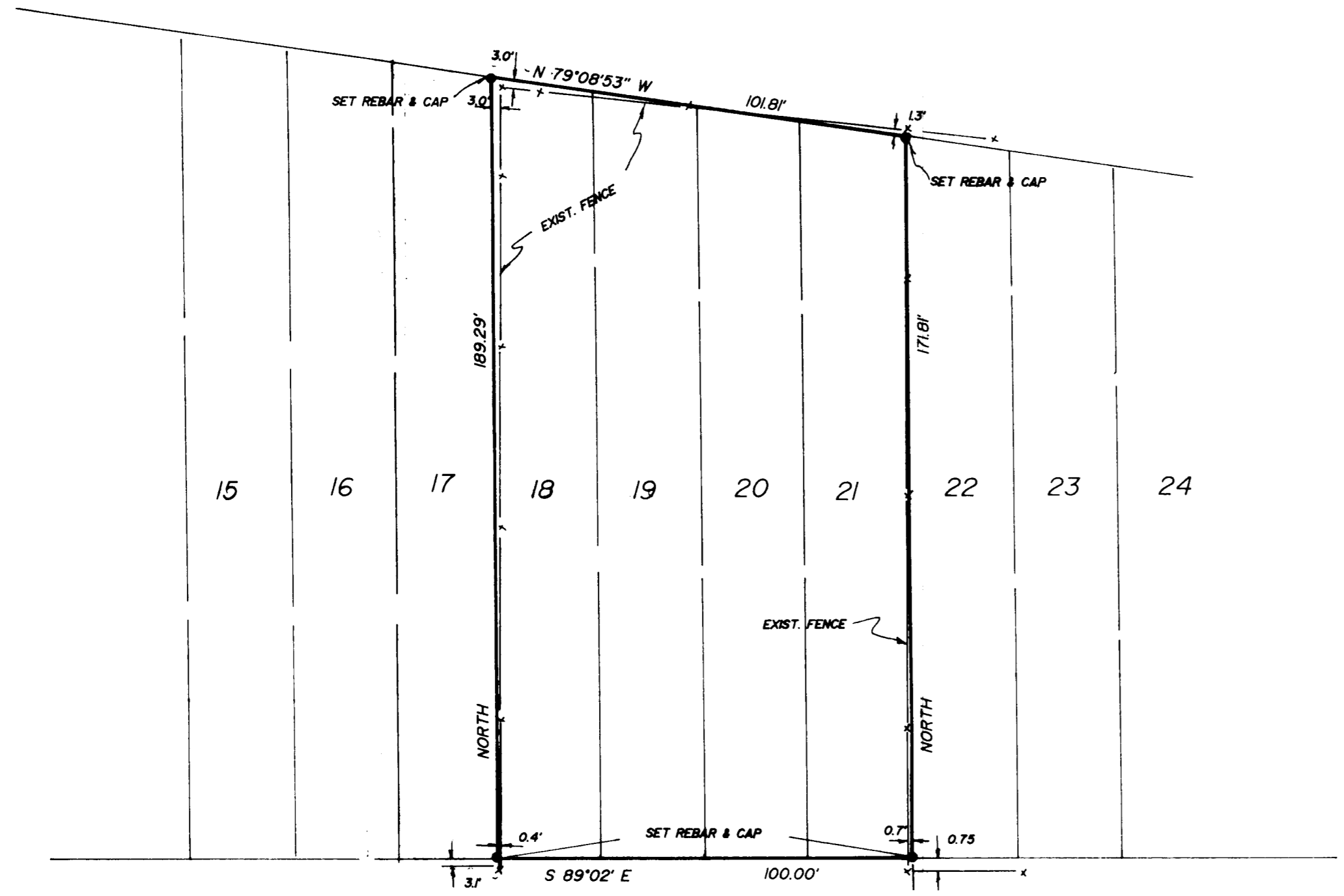
PLAN HOLD CORPORATION • IRVINE, CALIFORNIA
REGISTERED BY NUMBER 07540
POSITION EDGE OF PRINT ON THIS LINE

DRAWING NUMBER
001344

PLAN HOLD CORPORATION • IRVINE, CALIFORNIA
REGISTERED BY NUMBER 07540
POSITION EDGE OF PRINT ON THIS LINE

DRAWING NUMBER
001344

PLAN HOLD CORPORATION • IRVINE, CALIFORNIA
REGISTERED BY NUMBER 07540
POSITION EDGE OF PRINT ON THIS LINE



ALL OF LOTS 18, 19, 20, & 21, BLOCK 1, BROOKLAND ADDITION TO OGDEN CITY, WEBER COUNTY, UTAH ACCORDING TO THE OFFICIAL PLAT THEREOF.
CONTAINS 18,055 SQ. FT.

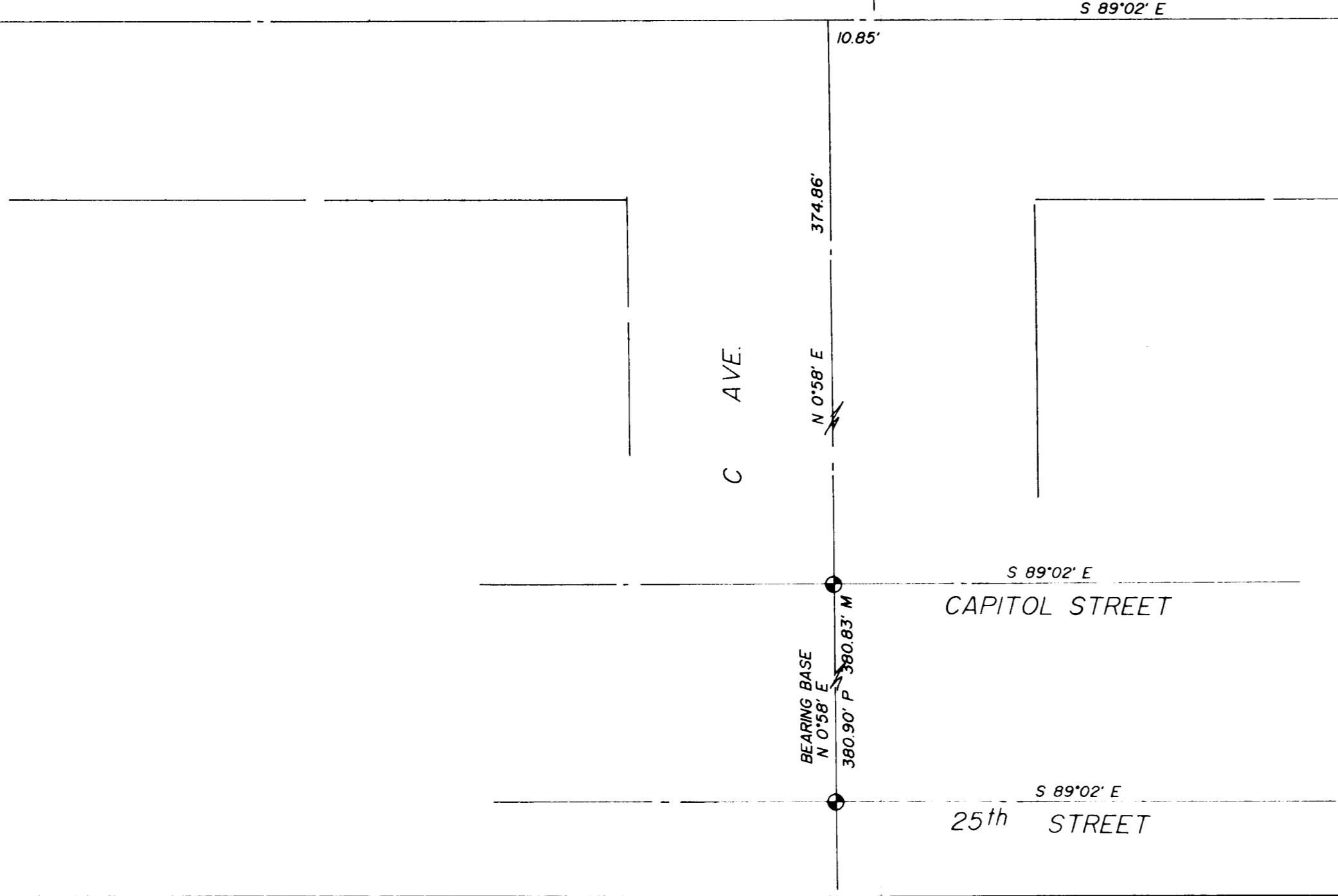
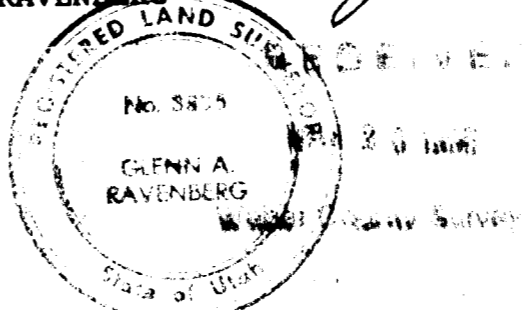
NARRATIVE

THIS SURVEY WAS DONE TO MONUMENT THE BOUNDARY OF SAID PROPERTY ON THE GROUND. THE TWO CITY MONUMENTS SHOWN WERE LOCATED AND USED FOR SURVEY CONTROL AND BASIS OF BEARINGS. THE FENCE ON THE WEST IS BUILT AT 90' TO THE STREET INSTEAD OF THE 89*02' INDICATED ON THE OGDEN CITY ENGINEERING PLATS.

I, GLENN RAVENBERG, DO HEREBY CERTIFY THAT I AM A REGISTERED LAND SURVEYOR, AND THAT I HOLD CERTIFICATE NO. 3835 AS PRESCRIBED BY THE LAWS OF THE STATE OF UTAH, AND I HAVE MADE A SURVEY OF THE ABOVE DESCRIBED PROPERTY. I FURTHER CERTIFY THAT THE ABOVE PLAT CORRECTLY SHOWS THE TRUE DIMENSIONS OF THE PROPERTY SURVEYED.

JUNE 1, 1995

Glenn Ravenberg
GLENN RAVENBERG



RECEIVED
MAY 20 1996
Weber County Surveyor

INTERMOUNTAIN SURVEYING
Layton, Utah 84041 (801) 544-1170

PROPERTY SURVEY
FOR
DAVID REESE

ALL OF LOTS 18, 19, 20, & 21, BLOCK 1, BROOKLAND ADDITION

JUNE 1, 1995 SCALE 1"=30' PS-95-25

001344