

DRAWING NUMBER  
001347

DRAWING NUMBER  
001347

DRAWING NUMBER  
001347

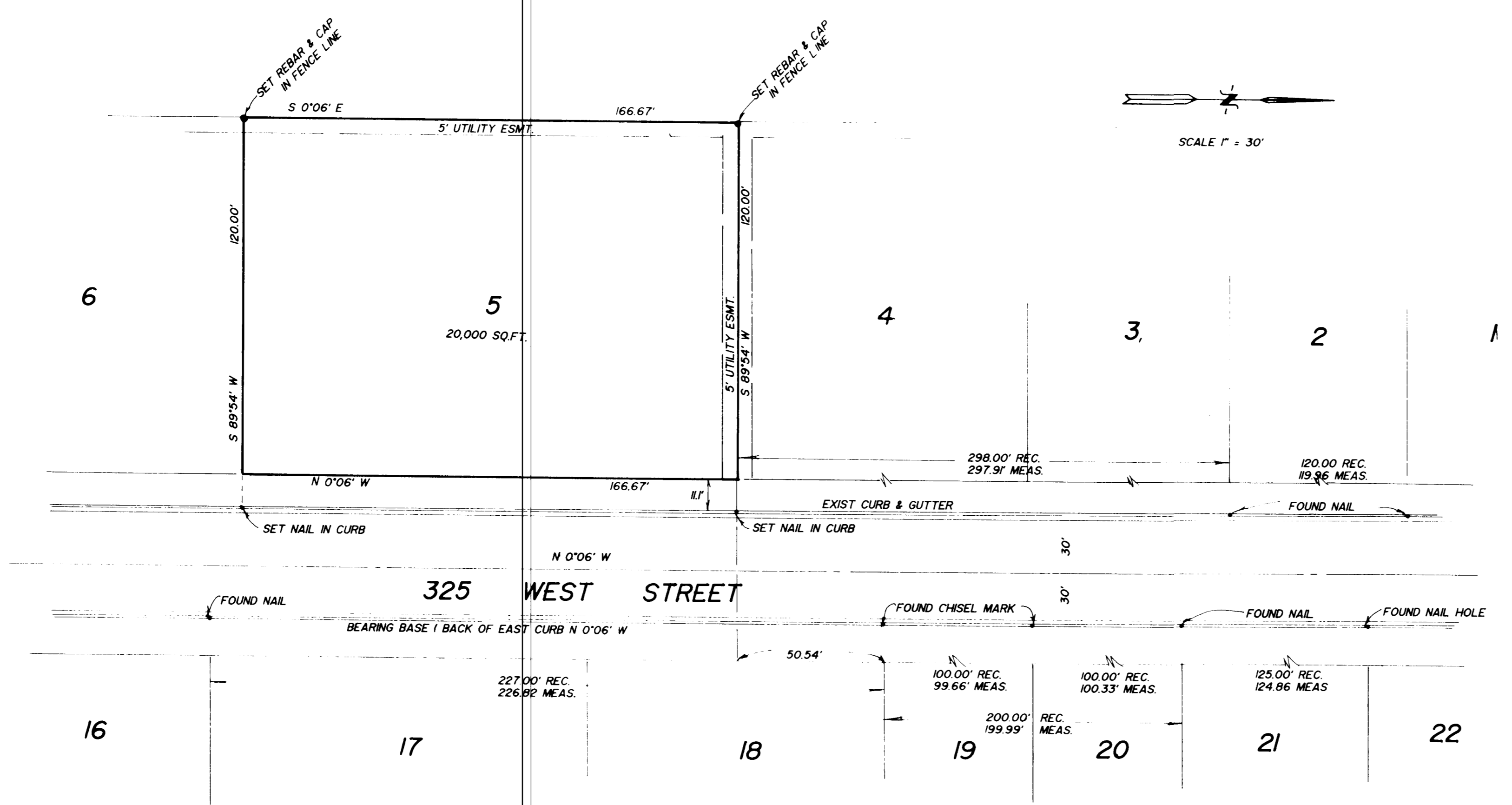
DRAWING NUMBER  
001347

PLAN HOLD CORPORATION • IRVINE, CALIFORNIA  
REORDER BY NUMBER 075AR

PLAN HOLD CORPORATION • IRVINE, CALIFORNIA  
REORDER BY NUMBER 075AR

PLAN HOLD CORPORATION • IRVINE, CALIFORNIA  
REORDER BY NUMBER 075AR

PLAN HOLD CORPORATION • IRVINE, CALIFORNIA  
REORDER BY NUMBER 075AR



ALL OF LOT 5, WEBER VIEW SUBDIVISION, PLEASANT VIEW CITY, WEBER COUNTY, UTAH ACCORDING TO THE OFFICIAL PLAT THEREOF.

**NARRATIVE**

THIS SURVEY WAS DONE TO LOCATE THE PROPERTY PRIOR TO HOME CONSTRUCTION. INTERNAL SUBDIVISION CONTROL (NAILS AND MARKS IN THE CURB) WAS LOCATED USED FOR SURVEY CONTROL. THE BACK OF THE EAST CURB WAS LOCATED AND USED FOR THE BASIS OF BEARINGS.

I, GLENN RAVENBERG, DO HEREBY CERTIFY THAT I AM A REGISTERED LAND SURVEYOR, AND THAT I HOLD CERTIFICATE NO. 3835 AS PRESCRIBED BY THE LAWS OF THE STATE OF UTAH, AND I HAVE MADE A SURVEY OF THE ABOVE DESCRIBED PROPERTY. I FURTHER CERTIFY THAT THE ABOVE PLAT CORRECTLY SHOWS THE TRUE DIMENSIONS OF THE PROPERTY SURVEYED.

MARCH 2, 1995

*Glenn Ravenberg*  
GLENN RAVENBERG



RECEIVED

MAY 20 1995

Weber County Surveyor

**INTERMOUNTAIN SURVEYING**  
Layton, Utah 84041 (801) 544-1170

**PROPERTY SURVEY FOR STEVE GIBSON**

ALL OF LOT 5, WEBER VIEW SUBDIVISION, PLEASANT VIEW, UTAH

MARCH 2, 1995 1" = 30' PS-95-07