

10 of 2

DECLARATION OF COUNTY LINE COMMON TO BOX ELDER COUNTY AND WEBER COUNTY, UTAH LOCATED IN SECTIONS 13, 14, 15, 16, T.7N., R.2W. AND SECTIONS 4, 7, 8, 9, 18, T.7N., S.L.B. & M. DECEMBER, 1990 SHEET 1 OF 2

NARRATIVE

THIS PLAT OF THE WEBER COUNTY, UTAH AND BOX ELDER COUNTY, UTAH COMMON BOUNDARY LINE BETWEEN SAID COUNTIES AND THE LOCATION OF SAID BOUNDARY LINE BEARING WAS STATE PLANE AS SHOWN ON FILE IN THE WEBER COUNTY SURVEYOR'S OFFICE AS OF DECEMBER 31, 1990.

COUNTY SURVEYOR'S CERTIFICATE

WE, THE UNDERSIGNED COUNTY SURVEYORS FOR WEBER COUNTY, UTAH AND BOX ELDER COUNTY, UTAH DO HEREBY CERTIFY THAT THIS PLAT IS A TRUE AND CORRECT REPRESENTATION OF A PORTION OF THE MONUMENTED BOUNDARY LINE BETWEEN SAID COUNTIES AS SURVEYED AND MONUMENTED ON THE DATE HEREIN SHOWN.

JOHN P. REEVE
WEBER COUNTY SURVEYOR

DENTON H. BECKER
BOX ELDER COUNTY SURVEYOR

ACKNOWLEDGEMENT

STATE OF UTAH
COUNTY OF WEBER

ON THIS 14 DAY OF JANUARY, 1991, PERSONALLY APPEARED BEFORE ME, THE UNDERSIGNED NOTARY PUBLIC, JOHN P. REEVE, WHO DULY ACKNOWLEDGED TO ME THAT HE IS THE WEBER COUNTY SURVEYOR AND HE SIGNED THE ABOVE COUNTY SURVEYOR'S CERTIFICATE.

NOTARY PUBLIC
John P. Reeve

ACKNOWLEDGEMENT

STATE OF UTAH
COUNTY OF BOX ELDER

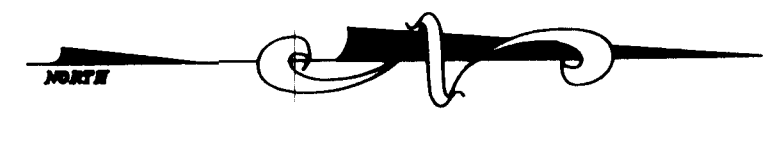
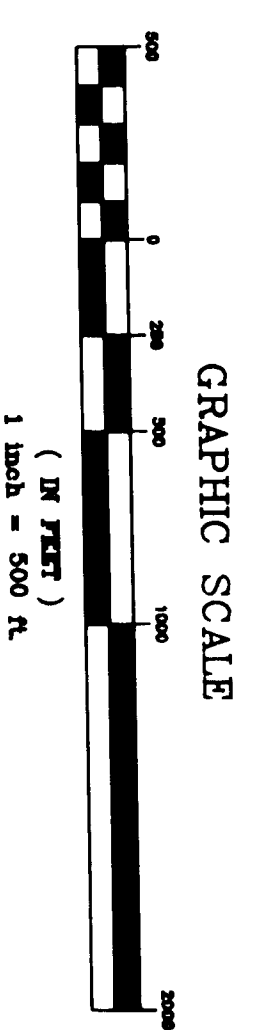
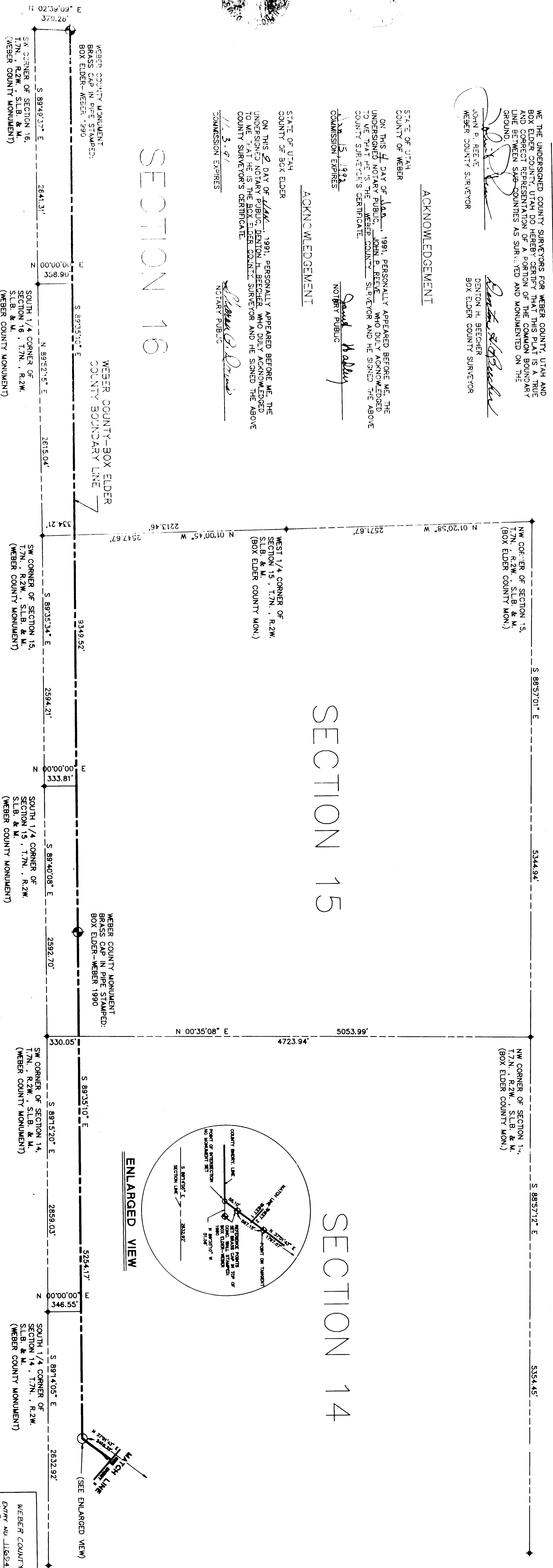
ON THIS 2 DAY OF JANUARY, 1991, PERSONALLY APPEARED BEFORE ME, THE UNDERSIGNED NOTARY PUBLIC, DENTON H. BECKER, WHO DULY ACKNOWLEDGED TO ME THAT HE IS THE BOX ELDER COUNTY SURVEYOR AND HE SIGNED THE ABOVE COUNTY SURVEYOR'S CERTIFICATE.

NOTARY PUBLIC
Denton H. Becker

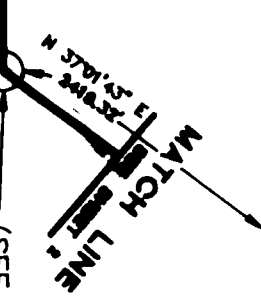
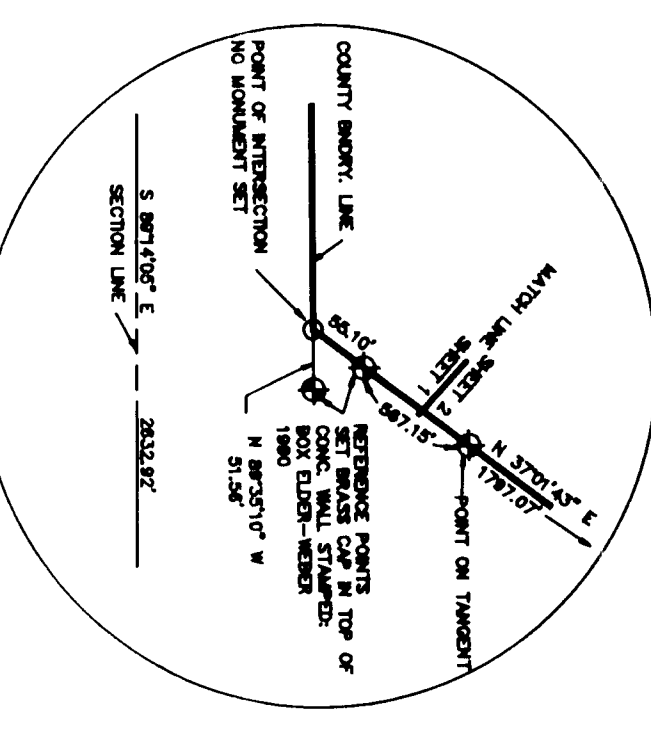
SECTION 16

SECTION 15

SECTION 14



ENLARGED VIEW

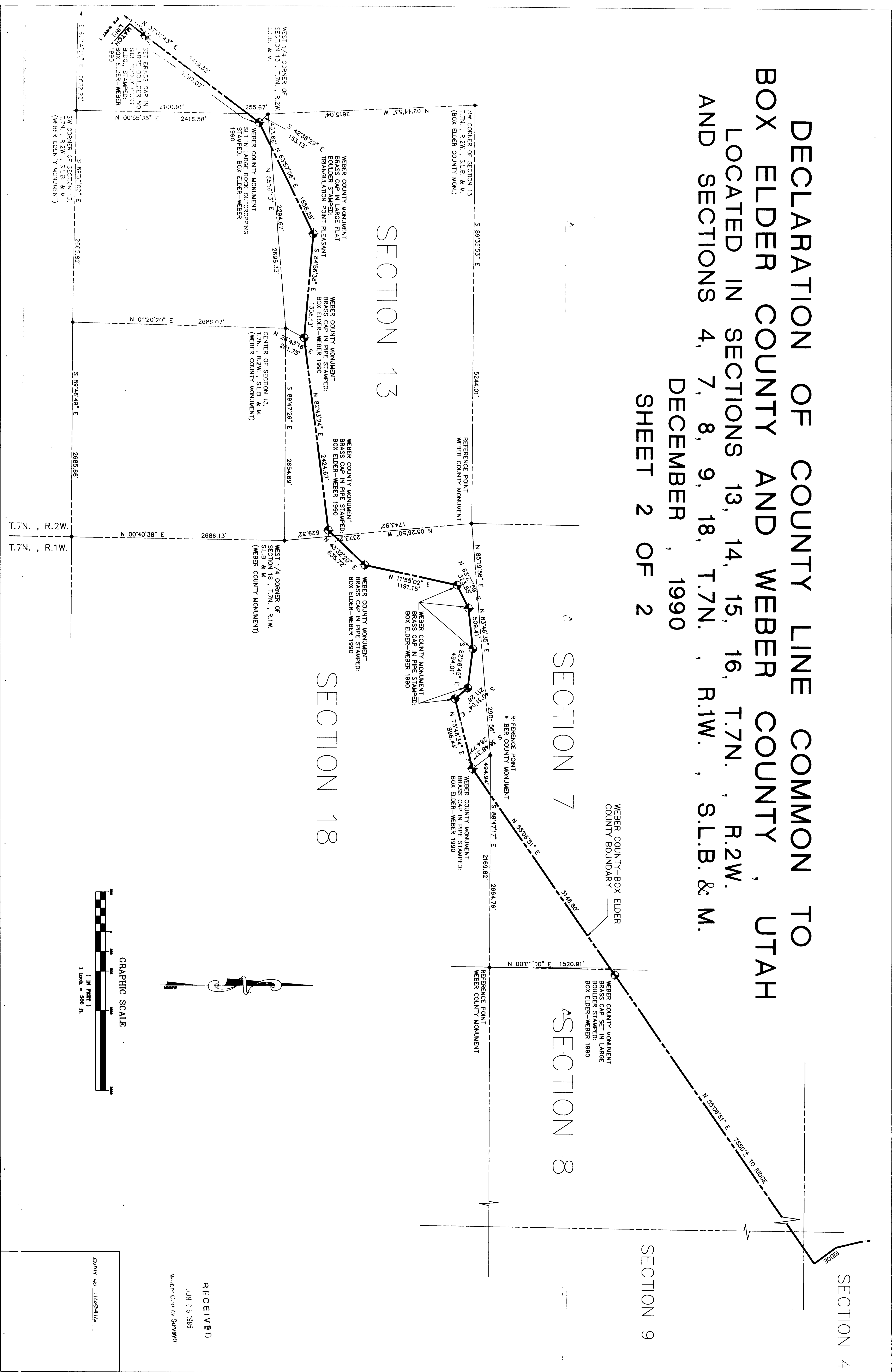


RECEIVED
JUN 03 1995
Weber County Surveyor

WEBER COUNTY RECORDER
ENTRY NO. 1182316 - FILED AND
RECORDED JULY 5, 1995 - 11 AM
AT THE CLERK'S OFFICE OF THE
COUNTY CLERK, SALT LAKE CITY,
UTAH. BY: [Signature]
COUNTY CLERK

DOUG CHAFFIN
WEBER COUNTY RECORDER
C. Willie Egan
Deputy

DECLARATION OF COUNTY LINE COMMON TO BOX ELDER COUNTY AND WEBER COUNTY, UTAH LOCATED IN SECTIONS 13, 14, 15, 16, T.7N., R.2W. AND SECTIONS 4, 7, 8, 9, 18, T.7N., R.1W., S.L.B. & M. DECEMBER, 1990 SHEET 2 OF 2



RECEIVED
JUN 13 1993
Weber County Surveyor

ENTER NO. 1102416