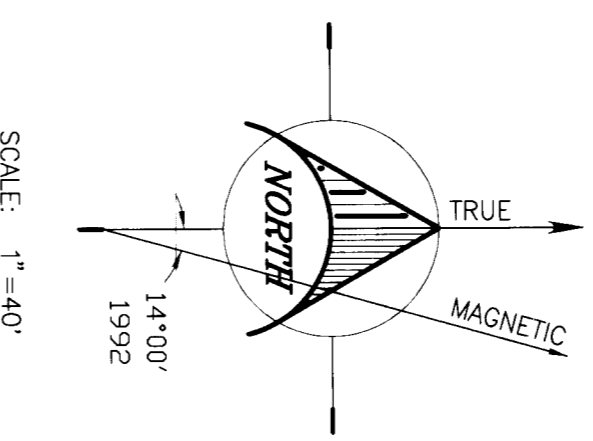
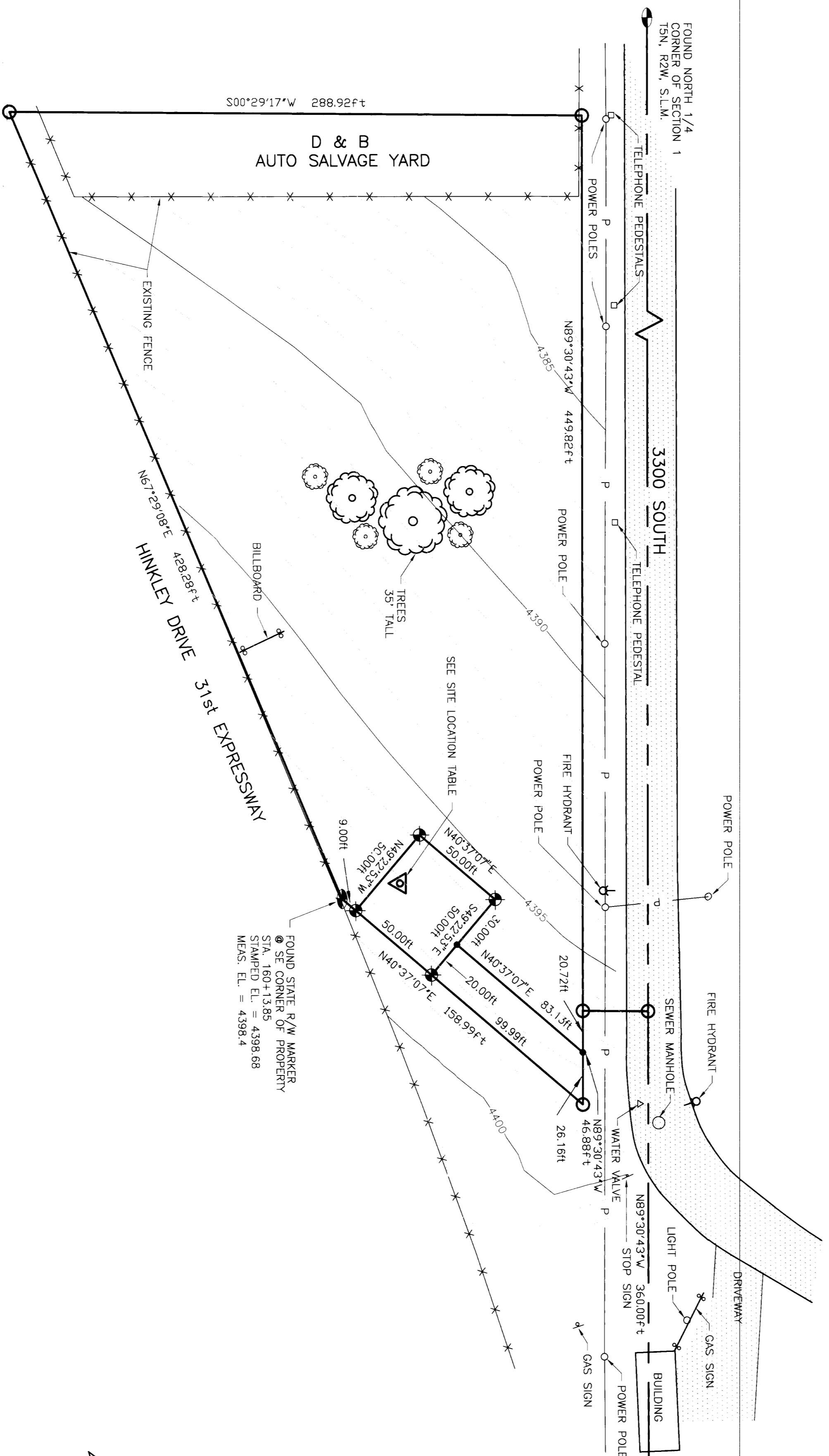


ROBERT STEVENS LEASE SITE CASCADE NO. 128F



SCALE: 1"=40'

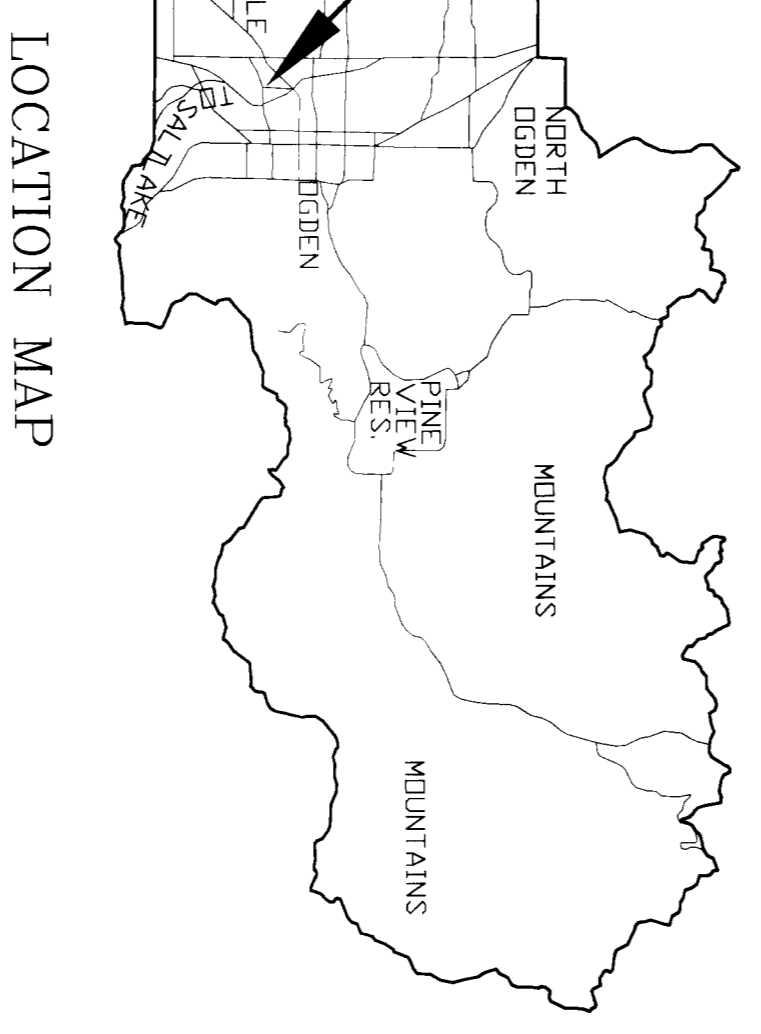
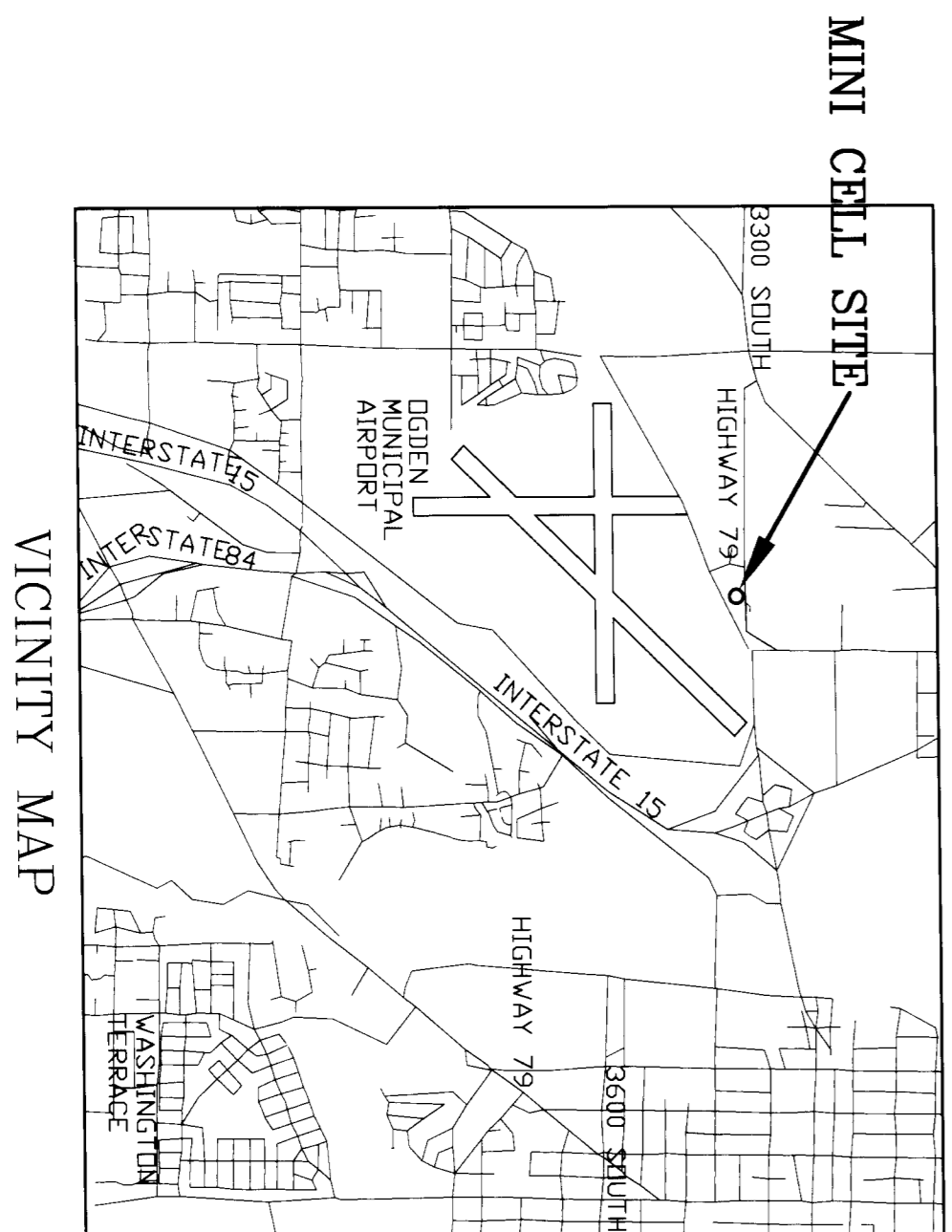


BASIS OF BEARING
S 89°30'43" E
2642.46ft ground
[2641.77ft grid]

FOUND NORTHEAST
CORNER OF SECTION 1
15N, 128N, 51N.

LOCATION TABLE

CELL SITE ELEVATION = 4397.5
STATE PLANE COORDINATES NAD 27
EASTING = 1860426.44
NORTHING = 3989749.12
STATE PLANE COORDINATES NAD 83
EASTING = 1500633.47
NORTHING = 3989749.12
GEODETIC COORDINATES NAD 27
LONGITUDE = W 112°00'28.01"
LATITUDE = N 41°12'17.49"
GEODETIC COORDINATES NAD 83
LONGITUDE = W 112°00'28.87"
LATITUDE = N 41°12'17.29"



RECORD OF SURVEY

SURVEYOR'S CERTIFICATE

I, PAUL J. ROBINSON, a duly Licensed Professional Engineer in the State of Utah, License No. 19989, do hereby certify that I am a Registered Land Surveyor and that I hold License Number 188189 as prescribed under the laws of the State of Utah. This survey was made and conducted in accordance with the laws of the State of Utah and that by the authority of the owners (SUNRISE ENGINEERS & LAND SURVEYORS, INC.) I have made a true and correct copy of this plat from the original field notes made during a survey of the subject land. I have also made a true and correct copy of this plat from a true and accurate map of the land surveyed.



BASIS OF BEARING
THE BASIS OF BEARING FOR BEARS 89 DEGREES 30' 43" EAST AND BEARS 2642.46 FEET BEARS THE NORTHEAST CORNER AND THE NORTH QUARTER CORNER OF SECTION 1, TOWNSHIP 5 NORTH, RANGE 2 WEST, SALT LAKE MERIDIAN.

ORIGINAL DESCRIPTION

PART OF THE NORTHEAST QUARTER OF SECTION 1, TOWNSHIP 5 NORTH, RANGE 2 WEST, SALT LAKE MERIDIAN, BEARING 89 DEGREES 30' 43" EAST AND BEARING 2642.46 FEET BEARS THE NORTHEAST CORNER AND THE NORTH QUARTER CORNER OF SECTION 1, TOWNSHIP 5 NORTH, RANGE 2 WEST, SALT LAKE MERIDIAN.

SURVEYED DESCRIPTION

CELL SITE DESCRIPTION
Commencing at the Northeast corner of Section 1, Township 5 North, Range 2 West, Salt Lake Meridian, a distance of 56,000 feet to a point; Thence South 00 Degrees 29 Minutes 17 Seconds West, a distance of 33,000 feet to a point on the South line of 3300 South Street, S30 Point being West 340 Feet and South Sinking Fence West 449.82 Feet along South line of 3300 South Street; Thence South 288.82 Feet to the Northwest corner of 428.27 Feet along said Expressway; Thence Northwesterly 159 Feet more or less, along centerline of said Expressway 428.27 Feet to the Point of Beginning; Thence West 46.88 Feet to the Point of Beginning.

ACCESS EASEMENT DESCRIPTION

Commencing at the Northeast corner of Section 1, Township 5 North, Range 2 West, Salt Lake Meridian; Thence North 89 Degrees 30 Minutes 43 Seconds West, a distance of 50,000 feet to a point; Thence South 00 Degrees 29 Minutes 17 Seconds West, a distance of 33,000 feet to a point on the South line of 3300 South Street; Thence South 89 Degrees 30 Minutes 43 Seconds East along said Expressway; Thence North 89 Degrees 30 Minutes 43 Seconds East along said Expressway; Thence South 89 Degrees 30 Minutes 43 Seconds East along said Expressway; Thence North 89 Degrees 30 Minutes 43 Seconds West, a distance of 99.99 feet to a point; Thence North 89 Degrees 30 Minutes 43 Seconds West, a distance of 99.99 feet to a point; Thence North 40 Degrees 37 Minutes 07 Seconds East, a distance of 50,000 feet to a distance of 50,000 feet to the Point of Beginning; Thence North 40 Degrees 37 Minutes 07 Seconds East, a distance of 83.13 feet to the Point of Beginning; 1831.26 square feet or 0.04 acres, more or less.

NOTES

1. ALL F.C.C. AND FAA REGULATIONS / REQUIREMENTS WILL BE ADHERED TO BY THIS PROJECT.
2. A.O.A. COMPLIANCE: FACILITY IS UNMANNED AND NOT FOR HUMAN HABITATION.
3. THIS SURVEY WAS PREPARED UTILIZING THE LATEST TIE BARS AND MEASUREMENTS MADE IN ACCORDANCE WITH THE UTAH SURVEYING ACT, F.S. 14-202, DATED MAY 15, 1996.
4. IT WAS DETERMINED IN THE COURSE OF THE SURVEY THAT THE BASIS OF BEARING FOR THE ORIGINAL DESCRIPTION IS WEST ALONG THE SECTION LINE.

LEGEND

- FOUND SECTION MONUMENT
- LEASE CORNER SET MARKER
- CALC'D POINT, NOTHING SET

REVISIONS

NO.	DATE	DESCRIPTION
1		
2		
3		
4		
5		
6		

SUNRISE ENGINEERING, INC.
CONSULTING ENGINEERS & LAND SURVEYORS
12257 SOUTH BUSINESS PARK DRIVE, SUITE 280
DRAPER, UTAH 84020
TEL (801) 529-0100
FAX (801) 529-0990



SPRINT SPECTRUM - CAPITAL LAND SERVICES
1225 WEST 3300 SOUTH, ODGEN, UTAH
NE QUARTER OF SECTION 1, TOWNSHIP 5 NORTH, RANGE 2 WEST, SALT LAKE MERIDIAN

RECEIVED

PROJECT NO.	58019
DRAWN BY	BR
CHECKED BY	DJR
DATE	6-4-96
SCALE	1 OF 1