

# BELL ACRES SUBDIVISION

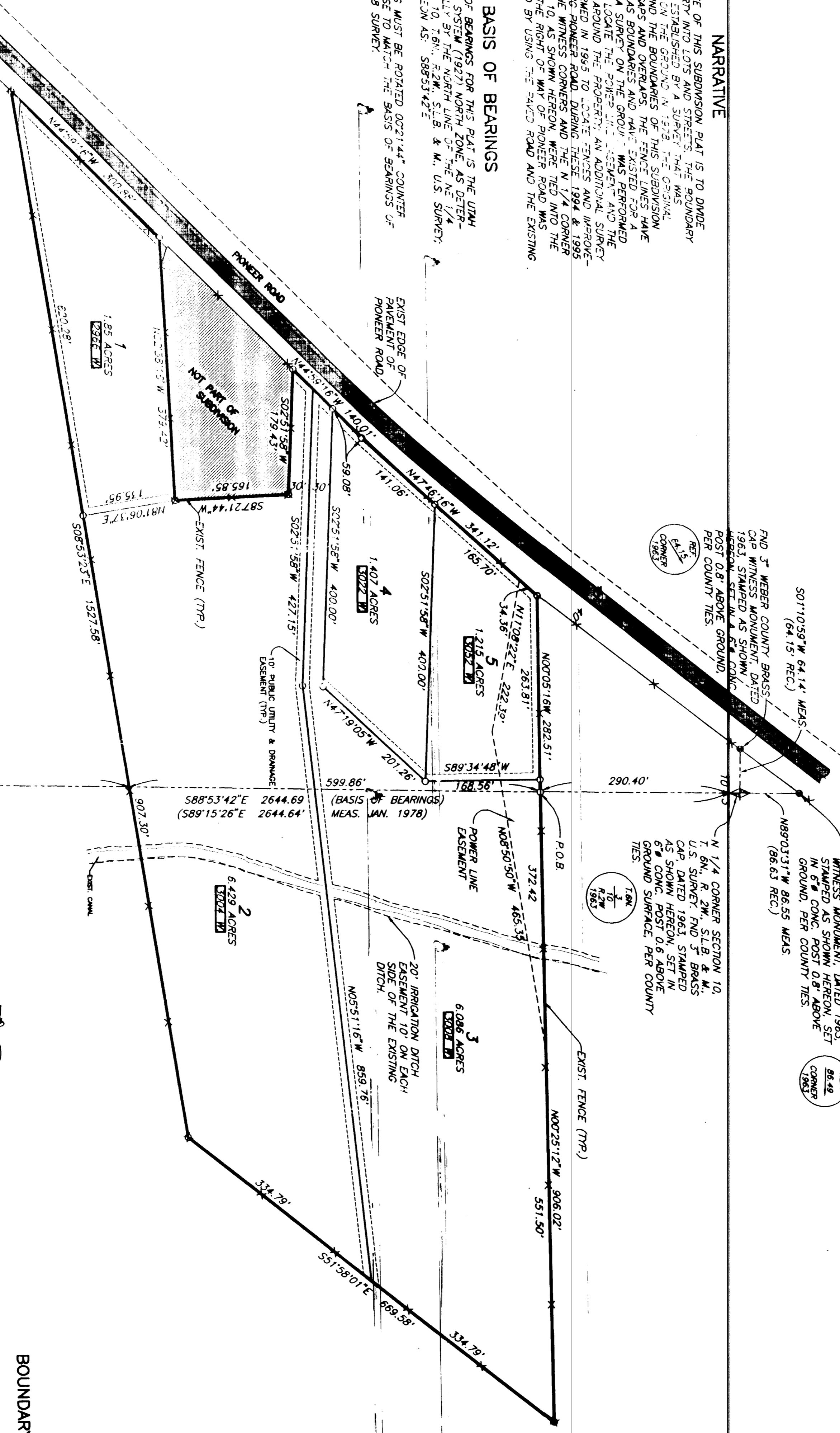
PART OF SECTION 10 & SECTION 5, T. 8N., R. 2W., S.1B. & M., U.S. SURVEY  
WEBER COUNTY, UTAH  
FEBRUARY, 1998

### NARRATIVE

THE PURPOSE OF THIS SUBDIVISION PLAT IS TO DIVIDE THE PROPERTY INTO LOTS AND STREETS. THE BOUNDARY LINES ARE SHOWN AS SHOWN ON THIS PLAT AND HAVE BEEN SURVEYED AND SET BY THE SURVEYOR. THE ORIGINAL SURVEY WAS MADE BY THE SURVEYOR IN 1978. THE ORIGINAL SURVEY WAS MADE BY THE SURVEYOR IN 1978. THE ORIGINAL SURVEY WAS MADE BY THE SURVEYOR IN 1978.

### BOUNDARY DESCRIPTION

ALL THAT LAND IN WEBER COUNTY, UTAH, BEING A PART OF SECTION 10 AND SECTION 5, T. 8N., R. 2W., S.1B. & M., U.S. SURVEY, DESCRIBED AS FOLLOWS:  
BEGINNING AT A POINT OF INTERSECTION OF A FENCE AND THE SECTION OF SECTION 10, SAID POINT BEING 587.53' E 290.40' FEET FROM THE N 1/4 CORNER OF SAID SECTION 10, AND RUNNING THENCE N 12.7° W 906.02' SETTING AN ANGLE OF 108.58' FEET ALONG SAID FENCE TO AN ANGLE POINT IN SAID FENCE; THENCE S 88° 53' 42" E 1527.58' FEET ALONG SAID FENCE TO THE NORTHEAST NORTHEAST CORNER OF POWER ROAD; THENCE N 82° 29' 16" W 379.42' FEET TO AN ANGLE POINT IN A FENCE; THENCE N 52° 14' 44" W 164.62' FEET ALONG SAID FENCE TO AN ANGLE POINT IN A FENCE; THENCE N 102° 28' 16" W 379.42' FEET TO AN ANGLE POINT IN A FENCE; THENCE TO THE NORTHEAST CORNER OF POWER ROAD; THENCE ALONG SAID NORTHEAST LINE THROUGH THE NEXT (2) TWO COURSES (1) 144.59' 1/2" W 140.01' FEET TO AN ANGLE POINT IN A FENCE; THENCE S 88° 53' 42" E 1527.58' FEET ALONG SAID FENCE TO THE POINT OF BEGINNING.



- = EXIST. FENCE LINE
- = R.O.W. MONUMENT
- = SET 5/8" REBAR & CAP
- = SET 1/2" REBAR & CAP
- = SECTION CORNER

### \*LEGEND\*

1. I HEREBY CERTIFY THAT THE REQUIRED PUBLIC IMPROVEMENT STANDARDS AND DIMENSIONS FOR THE STREETS AND OTHER PUBLIC UTILITIES SHOWN ON THIS PLAT HAVE BEEN APPROVED AND ACCEPTED BY THE COMMISSIONERS OF WEBER COUNTY, UTAH, THIS 22nd DAY OF FEBRUARY, 1998.

### WEBER COUNTY ENGINEER

THIS IS TO CERTIFY THAT THE REQUIRED PUBLIC IMPROVEMENT STANDARDS AND DIMENSIONS FOR THE STREETS AND OTHER PUBLIC UTILITIES SHOWN ON THIS PLAT HAVE BEEN APPROVED AND ACCEPTED BY THE COMMISSIONERS OF WEBER COUNTY, UTAH, THIS 22nd DAY OF FEBRUARY, 1998.

### WEBER COUNTY SURVEYORS

I HAVE EXAMINED THE PLAT AND THE RECORDS OF THE SURVEYOR AND THE RECORDS OF THE COMMISSIONERS OF WEBER COUNTY, UTAH, AND I HEREBY CERTIFY THAT THE REQUIRED PUBLIC IMPROVEMENT STANDARDS AND DIMENSIONS FOR THE STREETS AND OTHER PUBLIC UTILITIES SHOWN ON THIS PLAT HAVE BEEN APPROVED AND ACCEPTED BY THE COMMISSIONERS OF WEBER COUNTY, UTAH, THIS 22nd DAY OF FEBRUARY, 1998.

### WEBER COUNTY ATTORNEY

I HAVE EXAMINED THE PLAT AND THE RECORDS OF THE SURVEYOR AND THE RECORDS OF THE COMMISSIONERS OF WEBER COUNTY, UTAH, AND I HEREBY CERTIFY THAT THE REQUIRED PUBLIC IMPROVEMENT STANDARDS AND DIMENSIONS FOR THE STREETS AND OTHER PUBLIC UTILITIES SHOWN ON THIS PLAT HAVE BEEN APPROVED AND ACCEPTED BY THE COMMISSIONERS OF WEBER COUNTY, UTAH, THIS 22nd DAY OF FEBRUARY, 1998.

### WEBER COUNTY RECORDER

I HAVE EXAMINED THE PLAT AND THE RECORDS OF THE SURVEYOR AND THE RECORDS OF THE COMMISSIONERS OF WEBER COUNTY, UTAH, AND I HEREBY CERTIFY THAT THE REQUIRED PUBLIC IMPROVEMENT STANDARDS AND DIMENSIONS FOR THE STREETS AND OTHER PUBLIC UTILITIES SHOWN ON THIS PLAT HAVE BEEN APPROVED AND ACCEPTED BY THE COMMISSIONERS OF WEBER COUNTY, UTAH, THIS 22nd DAY OF FEBRUARY, 1998.

**SURVEYOR'S CERTIFICATE**  
I, JOHN P. REEVE, A REGISTERED PROFESSIONAL SURVEYOR IN THE STATE OF UTAH, DO HEREBY CERTIFY THAT THIS PLAT OF THE BELL ACRES SUBDIVISION IN WEBER COUNTY, UTAH, HAS BEEN PREPARED IN ACCORDANCE WITH THE REQUIREMENTS OF THE UTAH SURVEYING ACT AND THE REQUIREMENTS OF THE COMMISSIONERS OF WEBER COUNTY, UTAH. I HAVE EXAMINED THE PLAT AND THE RECORDS OF THE SURVEYOR AND THE RECORDS OF THE COMMISSIONERS OF WEBER COUNTY, UTAH, AND I HEREBY CERTIFY THAT THE REQUIRED PUBLIC IMPROVEMENT STANDARDS AND DIMENSIONS FOR THE STREETS AND OTHER PUBLIC UTILITIES SHOWN ON THIS PLAT HAVE BEEN APPROVED AND ACCEPTED BY THE COMMISSIONERS OF WEBER COUNTY, UTAH, THIS 22nd DAY OF FEBRUARY, 1998.

### OWNERS' DEDICATION AND CERTIFICATION

WE, THE UNDERSIGNED, OWNERS OF THE HEREIN-DESCRIBED TRACTS OF LAND AND STREETS AS SHOWN ON THIS PLAT, DO HEREBY CERTIFY THAT THE PUBLIC UTILITIES SHOWN ON THIS PLAT ARE TO BE USED AS PUBLIC UTILITIES AND ARE TO BE MAINTAINED AND OPERATED FOR THE BENEFIT OF THE PUBLIC. WE HEREBY DEDICATE AND OPERATE FOR THE BENEFIT OF THE PUBLIC THE INSTALLATION, MAINTENANCE, AND OPERATION OF PUBLIC UTILITIES SHOWN ON THIS PLAT. WE HEREBY CERTIFY THAT WE HAVE NO OTHER INTERESTS IN SUCH UTILITIES.

### ACKNOWLEDGEMENT

STATE OF UTAH, )  
COUNTY OF WEBER, )  
I, the undersigned, )  
do hereby certify that the )  
above described )  
tract of land and )  
streets, who, being )  
legally qualified, )  
have signed this )  
instrument, and for the purposes )  
herein mentioned.

### ACKNOWLEDGEMENT

STATE OF UTAH )  
COUNTY OF WEBER )  
I, the undersigned, )  
do hereby certify that the )  
above described )  
tract of land and )  
streets, who, being )  
legally qualified, )  
have signed this )  
instrument, and for the purposes )  
herein mentioned.

RECEIVED  
JUL 16 1998  
WEBER COUNTY RECORDER

WEBER COUNTY RECORDER  
RECEIVED  
JUL 16 1998  
WEBER COUNTY RECORDER