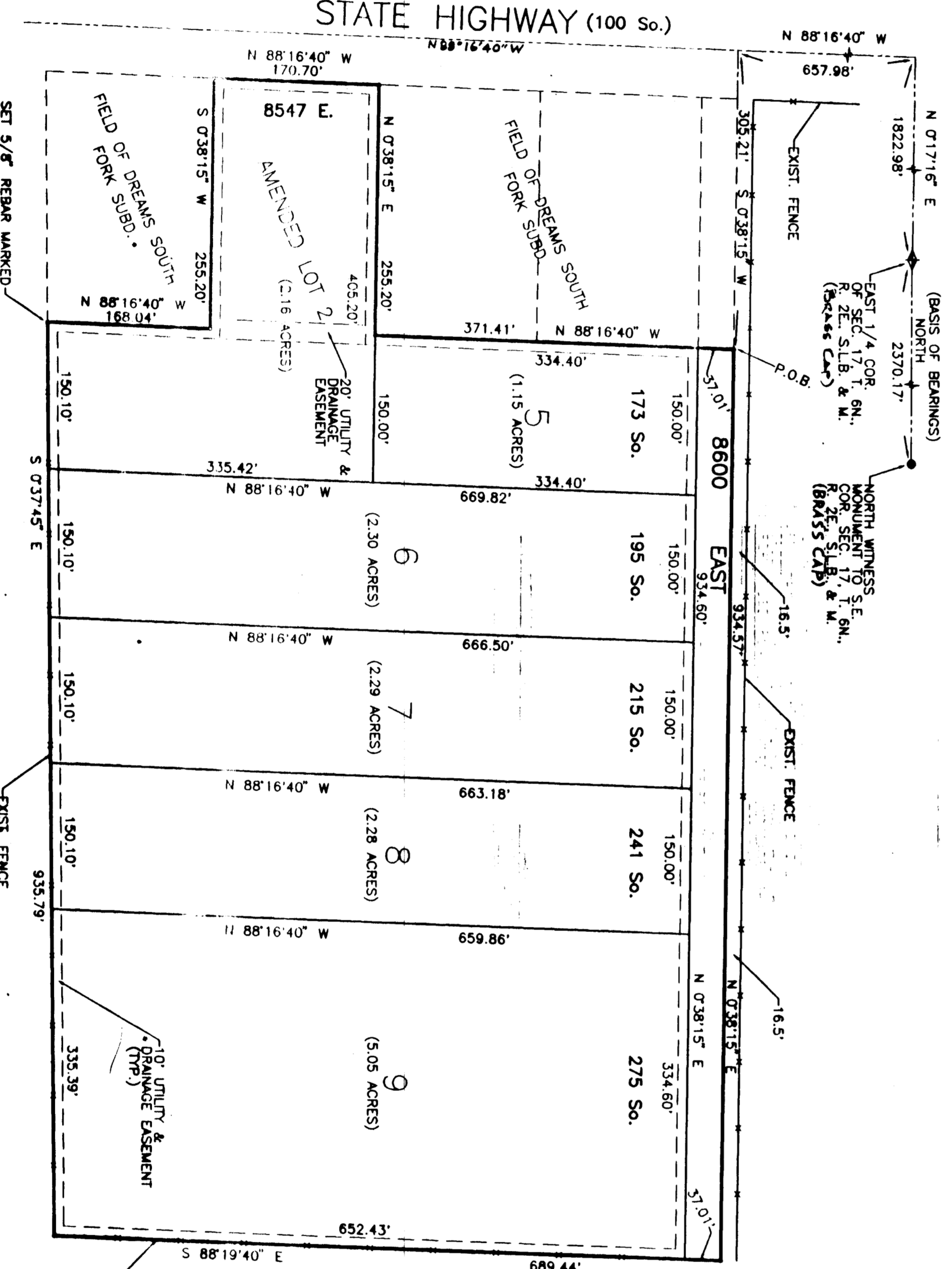


54 - 55

FIELD OF DREAMS SOUTH FORK SUBD. PLAT 2

PART OF THE NE 1/4 OF SEC. 17, T. 6N., R. 2E., S. 18B. & M. U.S. SURVEY
AND PART OF LOT 2 OF FIELD OF DREAMS SOUTH FORK SUBD.
WEBER COUNTY, UTAH
DECEMBER, 1995



BOUNDARY DESCRIPTION
 A PART OF THE NE 1/4 OF SEC. 17, T. 6N., R. 2E., S. 18B. & M. AND PART OF LOT 2 OF FIELD OF DREAMS SOUTH FORK SUBD. DESCRIBED BEGINNING AT A POINT N 01°17'18" E, 1822.98' W ALONG THE CENTERLINE OF STATE HIGHWAY 100 SOUTH FORK SUBD. 305.21' FEET FROM THE EAST 1/4 COR. OF AND SEC. 17, T. 6N., R. 2E., S. 18B. & M. HENCE N 88°16'40" W ALONG THE BOUNDARY OF FIELD OF DREAMS SOUTH FORK SUBD. 170.70' FEET; HENCE S 07°31'45" W, 255.20' FEET; HENCE N 88°16'40" W, 170.70' FEET; HENCE S 07°31'45" W, 255.20' FEET; HENCE N 88°16'40" W, 170.70' FEET; HENCE S 07°31'45" W, 255.20' FEET; HENCE N 88°16'40" W, 170.70' FEET TO THE POINT OF BEGINNING.

REEVE & REEVE, INC.
 CIVIL ENGINEERING
 LAND SURVEYING
 1000 N. 1000 E.
 CORNHILL, UTAH

THIS SURVEY WAS REQUESTED BY JOHN REEVE & REEVE, INC. FOR THE PURPOSE OF DIVIDING THE FIELD OF DREAMS SOUTH FORK SUBD. INTO LOTS 5 THROUGH 9 AND AN AMENDED LOT 2. THE SURVEY WAS COMPLETED ON DECEMBER 1, 1995. THE SURVEYOR HAS REVIEWED THE RECORDS OF THE FIELD OF DREAMS SOUTH FORK SUBD. AND HAS FOUND THEM TO BE CORRECT AND TO ACCURATELY SHOW THE BOUNDARIES OF THE LOTS AND THE AMENDED LOT 2.

WEBER COUNTY PLANNING COMMISSION
 APPROVED BY THE WEBER COUNTY PLANNING COMMISSION ON THE 12th DAY OF DECEMBER, 1995.

WEBER COUNTY SURVEYOR
 I HEREBY CERTIFY THAT I HAVE CAREFULLY INVESTIGATED THE MATTER AND THAT THE LINES AND MONUMENTS ON THIS PLAT ARE CORRECT AND TO ACCURATELY SHOW THE BOUNDARIES OF THE LOTS AND THE AMENDED LOT 2.

WEBER COUNTY ENGINEER
 I HEREBY CERTIFY THAT THE REQUIREMENTS OF ALL APPLICABLE STATUTES AND ORDINANCES PREVIOUSLY TO APPROVAL OF THIS PLAT AND REVISIONS HAVE BEEN COMPLIED WITH DATED THIS 21st DAY OF DECEMBER, 1995.

WEBER COUNTY ACCEPTANCE
 I HEREBY CERTIFY THAT THE REQUIREMENTS OF ALL APPLICABLE STATUTES AND ORDINANCES PREVIOUSLY TO APPROVAL OF THIS PLAT AND REVISIONS HAVE BEEN COMPLIED WITH DATED THIS 21st DAY OF DECEMBER, 1995.

WEBER COUNTY ATTORNEY
 I HEREBY CERTIFY THAT THE REQUIREMENTS OF ALL APPLICABLE STATUTES AND ORDINANCES PREVIOUSLY TO APPROVAL OF THIS PLAT AND REVISIONS HAVE BEEN COMPLIED WITH DATED THIS 21st DAY OF DECEMBER, 1995.

SURVEYOR'S CERTIFICATE
 I, THE UNDERSIGNED, A REGISTERED PROFESSIONAL SURVEYOR IN THE STATE OF UTAH, BEING A SUBDIVISION IN THE PART OF THE FIELD OF DREAMS SOUTH FORK SUBD. IN THE PART OF THE WEBER COUNTY, UTAH, HAS BEEN DRAWN CORRECTLY TO THE BEST OF MY KNOWLEDGE AND BELIEF. THE SURVEY WAS COMPLETED FROM RECORDS IN THE OFFICE OF THE SURVEYOR, WEBER COUNTY, UTAH, ON THE 1st DAY OF DECEMBER, 1995. I HEREBY CERTIFY THAT THE REQUIREMENTS OF ALL APPLICABLE STATUTES AND ORDINANCES OF WEBER COUNTY CONCERNING SURVEYS AND THE LOTS HEREIN SET FORTH ARE COMPLIED WITH AND THE LOTS HEREIN SET FORTH ARE LOCATED IN THE ZONE IN WHICH THEY ARE LOCATED.

SIGNED THIS 7th DAY OF DECEMBER, 1995.
 3492 UTAH LICENSE NUMBER
 SIGNATURE

OWNER'S DEDICATION AND CERTIFICATION
 WE, THE UNDERSIGNED OWNERS OF THE HEREIN-DESCRIBED TRACT OF LAND, HEREBY SET APART AND SUBDIVIDE THE SAME INTO LOTS AND STREETS, AS SHOWN ON THIS PLAT, AND MAKE SAID TRACT, LOTS AND STREETS, AS SHOWN ON THIS PLAT, A PUBLIC TRACT OF LAND TO BE USED AS A PUBLIC THROUGH-ACCESS FOR TRAVEL AND AS A PUBLIC TRACT OF LAND TO BE USED AS A PUBLIC THROUGH-ACCESS FOR TRAVEL AND AS A PUBLIC TRACT OF LAND TO BE USED AS A PUBLIC THROUGH-ACCESS FOR TRAVEL. WE HEREBY DEDICATE AND CERTIFY THAT THE ABOVE OWNERS' DEDICATION AND CERTIFICATION, WHO, BEING THE DULY SWORN, DID KNOWLEDGE TO THE FACTS HEREIN MENTIONED, FREELY, VOLUNTARILY, AND FOR THE PURPOSES HEREIN MENTIONED.

SIGNED THIS 21st DAY OF JANUARY, 1996.
 STATE OF UTAH
 COUNTY OF WEBER

ACKNOWLEDGEMENT
 ON THE 21st DAY OF JANUARY, 1996, I, THE UNDERSIGNED, A REGISTERED PROFESSIONAL SURVEYOR IN THE STATE OF UTAH, BEING A SUBDIVISION IN THE PART OF THE FIELD OF DREAMS SOUTH FORK SUBD. IN THE PART OF THE WEBER COUNTY, UTAH, HAS BEEN DRAWN CORRECTLY TO THE BEST OF MY KNOWLEDGE AND BELIEF. THE SURVEY WAS COMPLETED FROM RECORDS IN THE OFFICE OF THE SURVEYOR, WEBER COUNTY, UTAH, ON THE 1st DAY OF DECEMBER, 1995. I HEREBY CERTIFY THAT THE REQUIREMENTS OF ALL APPLICABLE STATUTES AND ORDINANCES OF WEBER COUNTY CONCERNING SURVEYS AND THE LOTS HEREIN SET FORTH ARE COMPLIED WITH AND THE LOTS HEREIN SET FORTH ARE LOCATED IN THE ZONE IN WHICH THEY ARE LOCATED.

SIGNED THIS 21st DAY OF JANUARY, 1996.
 STATE OF UTAH
 COUNTY OF WEBER

ACKNOWLEDGEMENT
 ON THE 19th DAY OF JANUARY, 1996, I, THE UNDERSIGNED, A REGISTERED PROFESSIONAL SURVEYOR IN THE STATE OF UTAH, BEING A SUBDIVISION IN THE PART OF THE FIELD OF DREAMS SOUTH FORK SUBD. IN THE PART OF THE WEBER COUNTY, UTAH, HAS BEEN DRAWN CORRECTLY TO THE BEST OF MY KNOWLEDGE AND BELIEF. THE SURVEY WAS COMPLETED FROM RECORDS IN THE OFFICE OF THE SURVEYOR, WEBER COUNTY, UTAH, ON THE 1st DAY OF DECEMBER, 1995. I HEREBY CERTIFY THAT THE REQUIREMENTS OF ALL APPLICABLE STATUTES AND ORDINANCES OF WEBER COUNTY CONCERNING SURVEYS AND THE LOTS HEREIN SET FORTH ARE COMPLIED WITH AND THE LOTS HEREIN SET FORTH ARE LOCATED IN THE ZONE IN WHICH THEY ARE LOCATED.

SIGNED THIS 19th DAY OF JANUARY, 1996.
 STATE OF UTAH
 COUNTY OF WEBER

WEBER COUNTY RECORDS
 DATE RECORDED
 PAGE NO. OF THE ORIGINAL RECORDS
 RECORD PAGE NO.
 RECORD BOOK NO. & PAGE NO.
 RECORD BOOK NO. & PAGE NO.