

DRAWING NUMBER  
001394

DRAWING NUMBER  
001394

DRAWING NUMBER  
001394

DRAWING NUMBER  
001394

01-14

# SOUTHWICK SUBDIVISION PHASE I

PART OF THE SE 1/4 OF SEC 17, T. 7N., R. 1E., S.L.B. & M., U.S. SURVEY  
LIBERTY DISTRICT, WEBER COUNTY, UTAH  
NOVEMBER, 1995

NE CORNER SEC. 17  
T. 7N., R. 1E., S.L.B. & M.  
ESTABLISHED PER COUNTY  
TIE INFORMATION.

**NARRATIVE**  
THE PURPOSE OF THIS SUBDIVISION PLAT IS TO  
DIVIDE THIS PROPERTY INTO LOTS AND STREETS. THE  
BOUNDARY LINES WERE ESTABLISHED BY A SURVEY  
THAT WAS PERFORMED ON SAID LAND.

### BOUNDARY DESCRIPTION

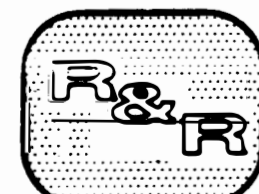
ALL THAT LAND IN THE DISTRICT OF LIBERTY, WEBER COUNTY, UTAH,  
BEING A PART OF THE SE 1/4 OF SECTION 17, T. 7N., R. 1E., U.S.  
SURVEY, S.L.B. & M., DESCRIBED AS FOLLOWS:

BEGINNING AT A POINT WHICH IS N00°28'25"E  
1224.05 FEET, ALONG THE SECTION LINE AND N85°39'49"W 709.17 FT. TO  
THE SW CORNER OF SAID SECTION 17, AND RUNNING THENCE  
N85°39'49"W 628.54 FEET, THENCE S00°29'28"W 704.26 FEET,  
THENCE S89°39'59"E 617.92 FEET TO THE WEST LINE OF SAID 3600  
EAST STREET, THENCE N03°31'23"W 385.19 FEET ALONG SAID WEST  
LINE, THENCE S89°39'49"E 60.14 FEET TO THE EAST LINE OF SAID  
3600 STREET, THENCE N03°31'23"W 385.19 FEET TO THE POINT OF  
BEGINNING.

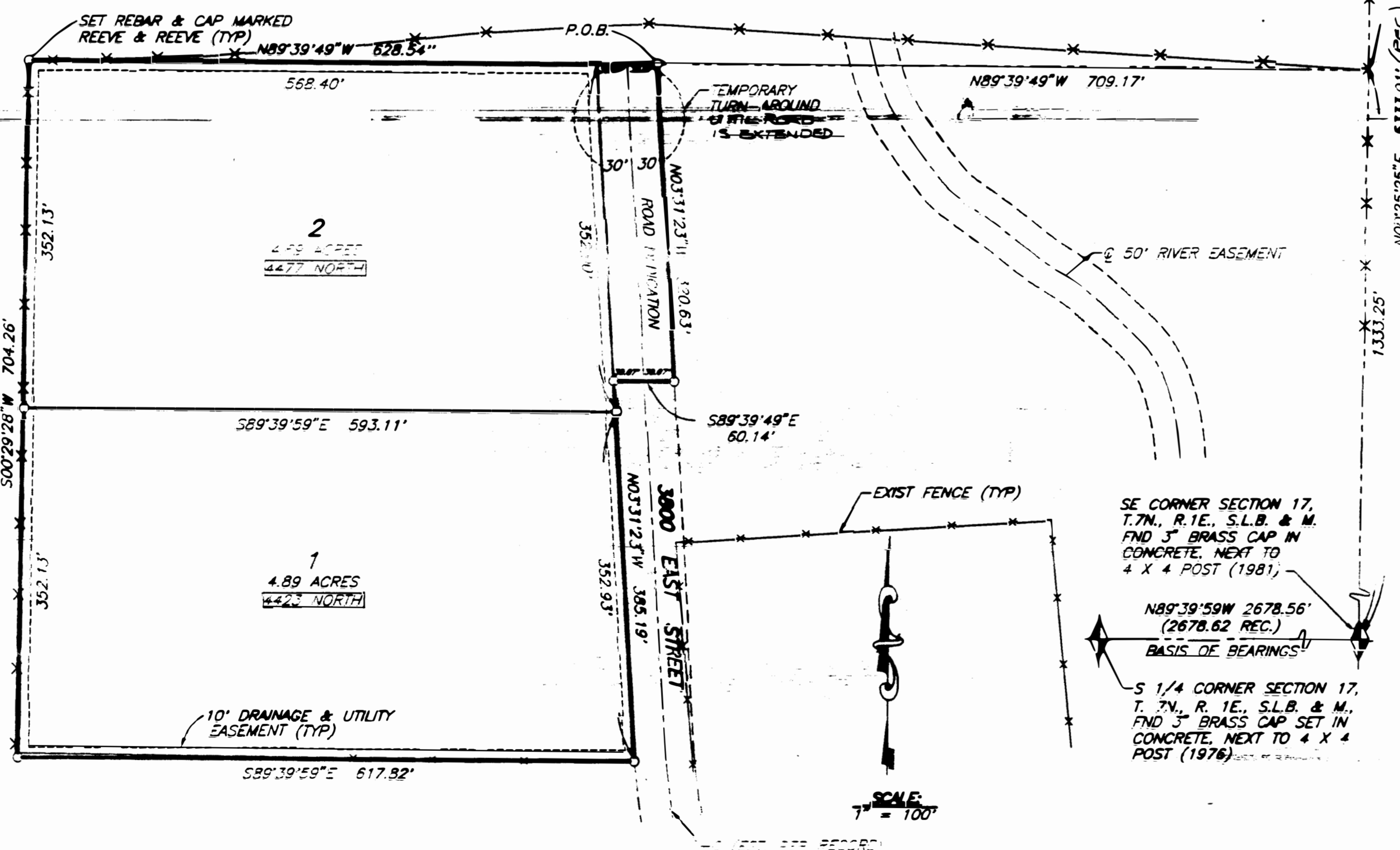
CONTAINS 10.03 ACRES, MORE OR LESS.

### BASIS OF BEARINGS

THE BASIS OF BEARINGS FOR THIS SURVEY IS THE  
UTAH MAGNETIC SYSTEM, 1983 NORTH ZONE, AS  
DETERMINED LOCALLY BY THE LINE BETWEEN THE SE  
CORNER AND THE S 1/4 CORNER OF SECTION 17,  
T. 7N., R. 1E., S.L.B. & M., U.S. SURVEY, SHOWN  
HEREIN AS N89°39'59"E



**REEVE & REEVE, INC.**  
CIVIL AND ENVIRONMENTAL ENGINEERING  
LAND PLANNING AND SITE DESIGN  
LAND SURVEYING  
3673 QUINCY AVE. OGDEN, UTAH



NOTE: AGRICULTURE IS THE PREFERRED USE IN THE  
AGRICULTURAL ZONES. AGRICULTURAL OPERATIONS AS  
SPECIFIED IN THE ZONING ORDINANCE FOR A PARTICULAR  
ZONE ARE PERMITTED AT ANY TIME, INCLUDING THE OPERATION  
OF TRACT MACHINERY AND NO ALLOWED AGRICULTURAL USE  
SHALL BE SUBJECT TO RESTRICTION ON THE BASIS THAT IT  
INTERFERES WITH ACTIVITIES OF FUTURE RESIDENTS OF  
THIS SUBDIVISION.

I HEREBY CERTIFY THAT I HAVE EXAMINED THE LINES OF SURVEY OF  
THE FOREGOING PLAT AND THE LEGAL DESCRIPTION OF THE LAND EMBRACED  
THEREIN AND FIND THEM TO ACCURATELY REPRESENT THE LINES OF SURVEY  
AND MONUMENTS ON RECORD IN THE OFFICE OF THE COUNTY CLERK,  
SIGNED THIS 22<sup>nd</sup> DAY OF NOVEMBER, 1995

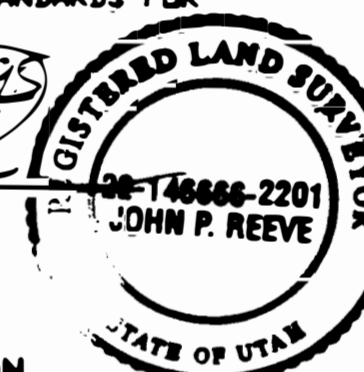
### SURVEYOR'S CERTIFICATE

JOHN P. REEVE, a registered professional surveyor  
in the state of Utah, do hereby certify that this plat of  
SOUTHWICK PHASE I SUBDIVISION IN  
WEBER COUNTY, UTAH, HAS BEEN DRAWN CORRECTLY TO THE  
DESIGNATED SCALE AND IS A TRUE AND CORRECT REPRESENTATION OF  
THE HEREIN-DESCRIBED LANDS INCLUDED IN SAID SUBDIVISION, BASED  
UPON DATA COMPILED FROM RECORDS IN THE WEBER COUNTY  
RECORDER'S OFFICE AND FROM A SURVEY MADE BY ME ON THE GROUND.  
I FURTHER CERTIFY THAT THE REQUIREMENTS OF ALL APPLICABLE  
STATUTES AND ORDINANCES OF WEBER COUNTY CONCERNING SURVEY  
REQUIREMENTS REGARDING LOT MEASUREMENTS HAVE BEEN COMPLIED  
WITH AND THE LOTS MEET THE SITE DEVELOPMENT STANDARDS FOR  
THE ZONE IN WHICH THEY ARE LOCATED.

SIGNED THIS 14<sup>th</sup> DAY OF NOV 1995

22-146666-2201  
UTAH LICENSE NUMBER

SIGNATURE



### OWNER'S DEDICATION AND CERTIFICATION

WE, THE UNDERSIGNED OWNERS OF THE HEREIN-DESCRIBED TRACT OF  
LAND, HEREBY SET APART AND SUBDIVIDE THE SAME INTO LOTS AND  
STREETS AS SHOWN ON THIS PLAT, AND HAVE SAID TRACT, SOUTHWICK  
PHASE I SUBDIVISION, AND HEREBY DEDICATE, GRANT, AND CONVEY TO  
THE PUBLIC, TO BE OWNED BY THE STATE OF UTAH, ALL THOSE PARTS OR PORTIONS OF SAID  
TRACT OF LAND DESIGNATED AS STREETS, THE SAME TO BE USED AS  
PUBLIC THOROUGHFARES FOREVER, AND ALSO DEDICATE TO WEBER COUNTY  
(AND) THOSE CERTAIN STRIPS AS EASEMENTS FOR PUBLIC UTIL-  
ITY AND DRAINAGE PURPOSES, AS SHOWN HEREON, THE SAME TO BE  
USED FOR THE INSTALLATION, MAINTENANCE, AND OPERATION OF PUBLIC  
UTILITY SERVICE LINES AND DRAINAGE AS MAY BE AUTHORIZED BY  
THE BOARD OF PUBLIC UTILITIES WITH NO BUILDINGS OR STRUCTURES BEING  
ERECTED WITHIN SUCH EASEMENTS.

SIGNED AND SEALED THIS 22<sup>nd</sup> DAY OF November 1995

### ACKNOWLEDGEMENT

STATE OF UTAH )  
COUNTY OF WEBER ) ss.

ON THE 9<sup>th</sup> DAY OF November, 1995, PERSONALLY APPEARED  
BEFORE ME, THE UNDERSIGNED NOTARY PUBLIC, Shawn L. Sullivan  
(AND) SIGNERS OF THE ABOVE OWNER'S DEDICATION  
AND CERTIFICATION, WHO BEING ME DULY SWORN, DID ACKNOWLEDGE TO  
ME THAT THEY SIGNED IT FREELY, VOLUNTARILY, AND FOR THE PURPOSES  
THEREIN MENTIONED.

April 29, 1998  
COMMISSION EXPIRES NOTARY PUBLIC

### ACKNOWLEDGEMENT

STATE OF UTAH )  
COUNTY OF WEBER ) ss.

ON THE \_\_\_\_\_ DAY OF \_\_\_\_\_, 19\_\_\_\_, PERSONALLY APPEARED  
BEFORE ME, THE UNDERSIGNED NOTARY PUBLIC, \_\_\_\_\_ AND  
\_\_\_\_\_, BEING ME DULY SWORN, ACKNOWLEDGED TO ME THEY  
ARE \_\_\_\_\_ OF SAID CORPORATION AND  
THAT THEY SIGNED THE ABOVE OWNER'S DEDICATION AND CERTIFICATION  
FREELY, VOLUNTARILY, AND IN BEHALF OF SAID CORPORATION FOR THE  
PURPOSES THEREIN MENTIONED.

COMMISSION EXPIRES NOTARY PUBLIC

### WEBER COUNTY PLANNING COMMISSION APPROVAL

THIS IS TO CERTIFY THAT THIS SUBDIVISION PLAT HAS DULY  
APPROVED BY THE WEBER COUNTY PLANNING COMMISSION ON  
THE \_\_\_\_\_ DAY OF \_\_\_\_\_, 19\_\_\_\_.

Wanda R. Johnson  
CHAIRMAN, WEBER COUNTY PLANNING COMMISSION

### WEBER COUNTY ENGINEER

I HEREBY CERTIFY THAT THE REQUIRED PUBLIC IMPROVEMENT STANDARDS AND DRAWINGS  
FOR THIS SUBDIVISION CONFORM WITH COUNTY STANDARDS AND THE ADEQUACY OF THE  
GUARANTEE IS SUFFICIENT FOR THE INSTALLATION OF THESE IMPROVEMENTS.

SIGNED THIS 20<sup>th</sup> DAY OF Nov. 19 95  
Chris Christensen  
SIGNATURE

### WEBER COUNTY COMMISSION ACCEPTANCE

THIS IS TO CERTIFY THAT THIS SUBDIVISION PLAT, THE DEDICATION OF  
STREETS AND OTHER PUBLIC VAYS AND FINANCIAL GUARANTEE OF PUBLIC  
IMPROVEMENTS ASSOCIATED WITH THIS SUBDIVISION THEREON ARE  
HEREBY APPROVED AND ACCEPTED BY THE COMMISSIONERS OF WEBER  
COUNTY, UTAH THIS \_\_\_\_\_ DAY OF \_\_\_\_\_, 19\_\_\_\_.

James H. Johnson  
CHAIRMAN, WEBER COUNTY COMMISSION

### WEBER COUNTY ATTORNEY

I HAVE EXAMINED THE FINANCIAL GUARANTEE AND OTHER DOCUMENTS ASSOCIATED  
WITH THIS SUBDIVISION PLAT AND IN MY OPINION THEY CONFORM WITH THE  
COUNTY ORDINANCE APPLICABLE THERETO AND NOW IN FORCE AND EFFECT.

SIGNED THIS \_\_\_\_\_ DAY OF \_\_\_\_\_, 19\_\_\_\_  
Wanda R. Johnson  
SIGNATURE

### WEBER COUNTY RECORDER

ENTRY NO. \_\_\_\_\_ FEE PAID \$\_\_\_\_\_  
FILED FOR RECORD AND RECORDED  
ON \_\_\_\_\_ AT \_\_\_\_\_  
IN BOOK \_\_\_\_\_ OF THE OFFICIAL  
RECORDS, PAGE \_\_\_\_\_

RECORDED FOR:  
Shawn L. Sullivan

WEBER COUNTY RECORDER  
BY: \_\_\_\_\_ DEPUTY

RECORDED  
JUL 20 1996