

61-43

SHADOW CREEK ESTATES SUBD. NO. 1

A PART OF SECTION 26, T.5 N., R.1 W., S.L.B. 8 M., U.S. SURVEY
WEBER COUNTY, UTAH

SURVEYOR'S CERTIFICATE

I, JOHN P. REEVE, a registered professional surveyor in the state of Utah, do hereby certify that this plat of Shadow Creek Estates Subd. No. 1, a subdivision of the Shadow Creek Estates, and correct representation of the herein-described lands included in said subdivision, based upon data collected by me in the performance of my duties as a surveyor, and that the requirements of applicable statutes and ordinances of Weber County, Utah, have been complied with, and the plat is correct in all respects.

34-92
UTAH LICENSE NUMBER
OWNER'S DEDICATION AND CERTIFICATION
STATE OF UTAH
COUNTY OF WEBER

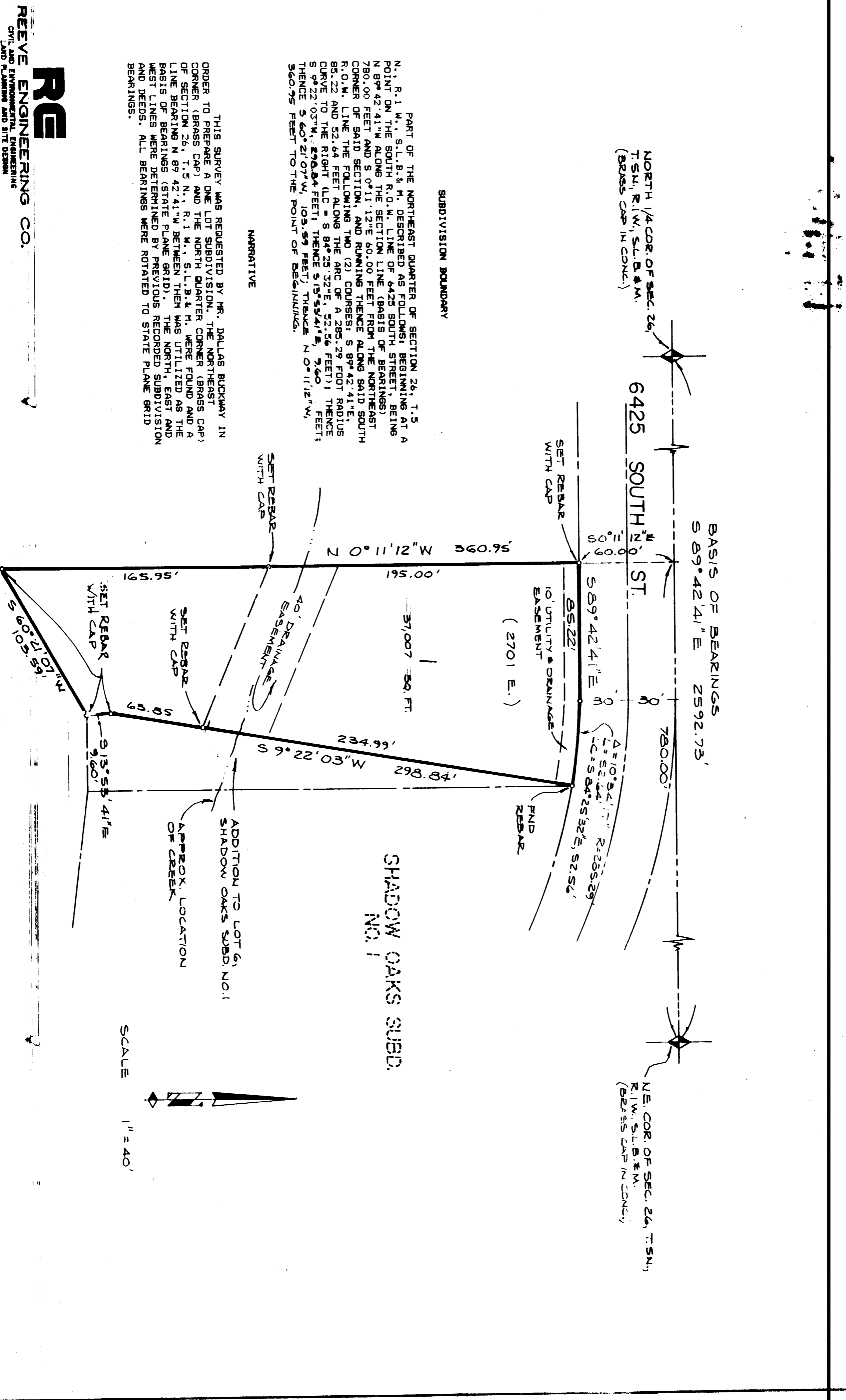
ON THE 19th DAY OF JULY, 1992, PERSONALLY APPEARED before me, the undersigned, the above-named owner, and being by me duly sworn, acknowledged to me and certified that he is the owner of the above-mentioned premises, and that he is the owner of said premises for the purposes therein mentioned.

ACKNOWLEDGEMENT
STATE OF UTAH
COUNTY OF WEBER

NOTARY PUBLIC
COMMISSION EXPIRES

COURT RECORDER
Fees Paid
Recorded May 22, 1992

RECEIVED 34-19
JUL 16 1992



REVE ENGINEERING CO.
WEBER COUNTY PLANNING COMMISSION
WEBER COUNTY SURVEYOR
WEBER COUNTY ACCEPTANCE
WEBER COUNTY ENGINEER

APPROVED BY THE WEBER COUNTY PLANNING COMMISSION ON THE 19th DAY OF JULY, 1992.
I HEREBY CERTIFY THAT I HAVE CAREFULLY REVISITED THE LINES OF SURVEY OF THE PLAT HERE DULY APPROVED AND ACCEPTED BY THE COMMISSION OF THIS PLAT AND THAT THE LINES SHOWN THEREIN AND THE DISTANCES THEREON ARE CORRECT AND TO AGREE WITH THE LINES AND MONUMENTS ON RECORD IN THIS OFFICE AND IN COMPLIANCE WITH THE REQUIREMENTS OF WEBER COUNTY ORDINANCES.
I HEREBY CERTIFY THAT THE REQUIREMENTS OF ALL APPLICABLE STATUTES AND ORDINANCES PREVIOUSLY TO APPROVAL BY THE COMMISSION OF THIS PLAT AND THE REQUIREMENTS OF APPLICABLE STATUTES AND ORDINANCES OF WEBER COUNTY HAVE BEEN COMPLIED WITH.