

Notes:

1. This drawing is the sole property of Balling Engineering, Inc. Any reproduction, copying, tracing, blueprints, etc.) by anyone other than Balling Engineering, Inc. without the written permission of Balling Engineering, Inc. shall be held responsible for any unauthorized use of its plans, designs, or ideas.
2. The construction designs on this drawing should be completely followed in detail. Any deviation from the construction designs on this drawing should be approved in writing by Balling Engineering, Inc. before construction begins. Balling Engineering, Inc. shall be held responsible for any unauthorized use of its plans, designs, or ideas.
3. The contractor and owner are to assume full responsibility for any deviations from the dimensions and details shown on these plans are constructed accordingly.

Location

All of Lot 13 in Henderson Subdivision No. 3 in Ogden City, Weber County, Utah.

Surveyor's Certificate

I, David K. Balling, do hereby certify that I am a Registered Professional Engineer in the State of Utah, as shown on my Certificate No. 1175114, and that I have made a survey of the tract of land shown and described herein on this day 13 of April, 1995.

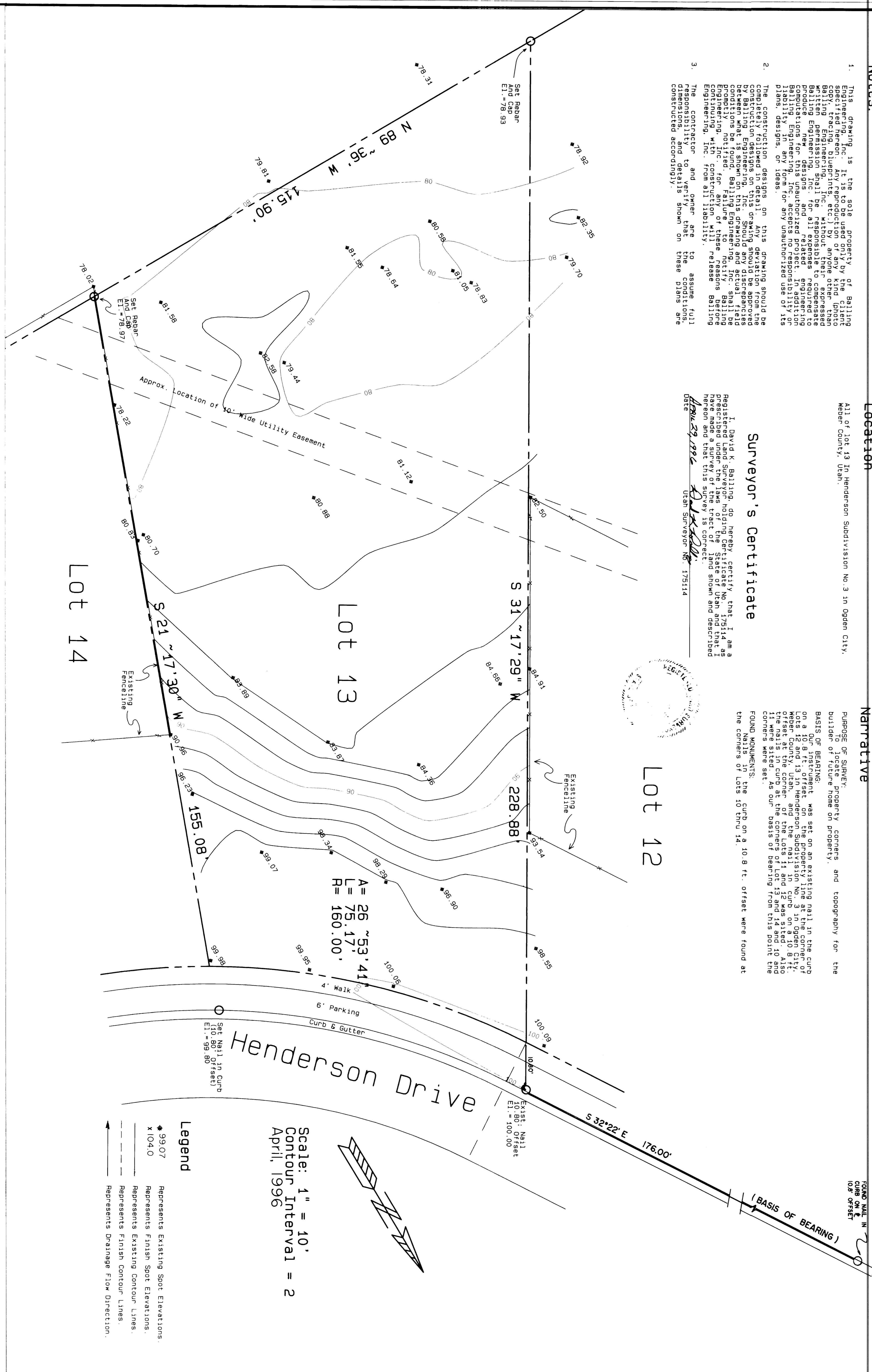
David K. Balling
Utah Surveyor No. 1175114

Narrative

PURPOSE OF SURVEY: To locate property corners and topography for the builder of future home on property.

BASIS OF BEARING: On a Que instrument was set on an existing nail in the curb on a 10' x 10' lot in Henderson Subdivision No. 3 in Henderson City, Weber County, Utah, and the nail in curb on a 10' x 10' lot in Henderson Subdivision No. 3 in Henderson City, Utah, were sighted. As our basis of bearing from this point the corners of Lots 12 and 13 were found.

FOUND MONUMENTS: The curb on a 10' x 10' lot, offset were found at the corners of Lots 10 thru 14.



Lot 12

Lot 13

Lot 14

Henderson Drive

A = 26° 53' 41\"/>

Scale: 1" = 10'
Contour Interval = 2'
April, 1996

- Legend
- ◆ 99.07 Represents Existing Spot Elevations
 - x 104.0 Represents Finish Spot Elevations
 - Represents Existing Contour Lines
 - Represents Finish Contour Lines
 - Represents Drainage Flow Direction



RECEIVED APR 28 1996 Weber County Surveyor	SURVEYOR	D. Balling	DATE	April 1995
	DRAFTING	C. Balling	CHECKED BY	C. Balling
	DATE APPROVED			
	FILE NUMBER			

DATE	DESCRIPTION	BY

Blake Mathews
393 W. 775 So.
Centerville, Utah 84014
Phone: 599-5226

BALLING ENGINEERING
CIVIL ENGINEERING + SURVEYING + PLANNING
PHONE: (801) 295-7237

001447