

PRESIDIO SUBDIVISION NO. 2
PART OF THE NE 1/4 SECTION 8, T. 6N., R. 2W., S.1.B. & M.
WEBER COUNTY, UTAH
MAR., 1996

SURVEYORS CERTIFICATE

I, DAUG L. GRHAM, A REGISTERED LAND SURVEYOR IN THE STATE OF UTAH DO HEREBY SET FORTH AND SUBDIVIDE THE SAME INTO LOTS AND STREETS AS SHOWN ON THE PLAT AND NAME SAID TRACT PRESIDIO SUBDIVISION NO. 2 AND UNDER THE LANDS DESIGNATED ON THE PLAT AS PUBLIC UTILITY, STORM WATER RETENTION BASINS AND DRAINAGE EASEMENTS, THE SAME TO BE USED FOR THE PURPOSES OF THE PERPETUAL PRESERVATION OF WATER CHANNELS IN THEIR NATURAL STATE AND FOR THE PERPETUAL PRESERVATION OF THE NATURAL STATE UTILITIES AND STRUCTURES BEING ERECTED WITHIN SUCH EASEMENTS.

SIGNED THIS 4th DAY OF APRIL, 1996
PLS. # 127279
DAUG L. GRHAM
LAND SURVEYOR

OWNERS DEDICATION

UP THE UNDERSIGNED OWNERS OF THE HEREBY DESCRIBED TRACT OF LAND DO HEREBY SET APART AND SUBDIVIDE THE SAME INTO LOTS AND STREETS AS SHOWN ON THE PLAT AND NAME SAID TRACT PRESIDIO SUBDIVISION NO. 2 AND UNDER THE LANDS DESIGNATED ON THE PLAT AS PUBLIC UTILITY, STORM WATER RETENTION BASINS AND DRAINAGE EASEMENTS, THE SAME TO BE USED FOR THE PURPOSES OF THE PERPETUAL PRESERVATION OF WATER CHANNELS IN THEIR NATURAL STATE AND FOR THE PERPETUAL PRESERVATION OF THE NATURAL STATE UTILITIES AND STRUCTURES BEING ERECTED WITHIN SUCH EASEMENTS.

SIGNED THIS 4th DAY OF APRIL, 1996

ACKNOWLEDGEMENT

STATE OF UTAH, I, _____, PERSONALLY APPEARED ON THIS 4th DAY OF APRIL, 1996, BEFORE ME, THE UNDERSIGNED NOTARY PUBLIC, THE SIGNERS OF THE ABOVE INSTRUMENT, AND THEY SIGNED IT FREELY AND VOLUNTARILY AND FOR THE PURPOSES HEREIN MENTIONED.

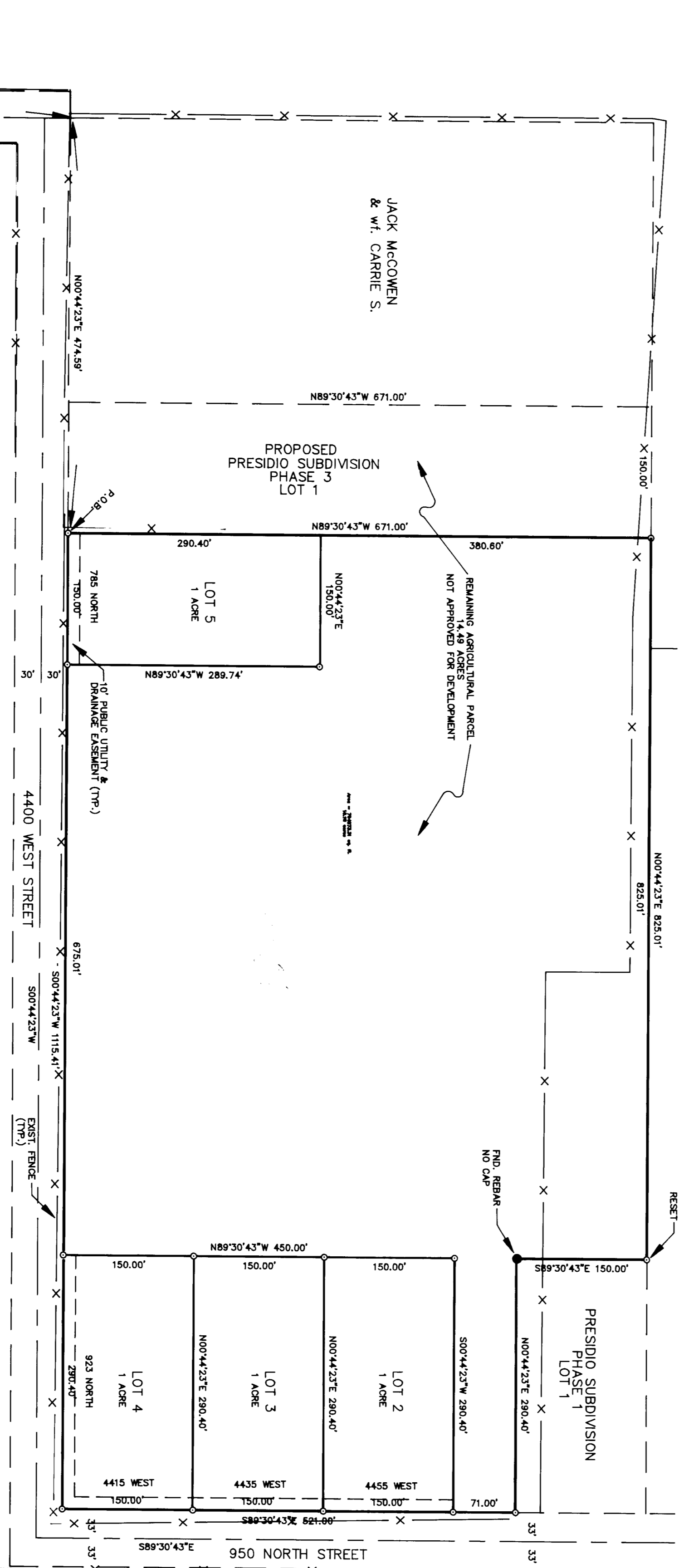
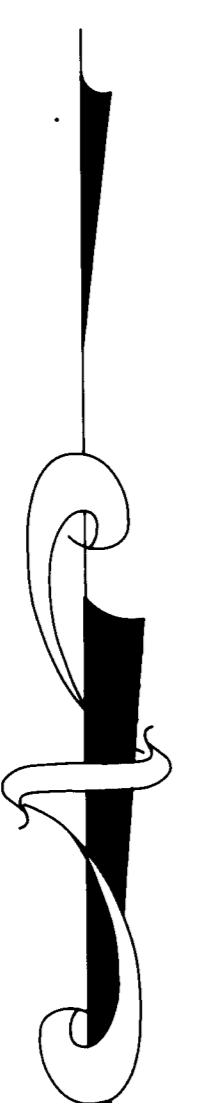
DESCRIPTION

A PART OF THE NORTHEAST QUARTER OF SECTION 8, TOWNSHIP 6 NORTH, RANGE 2 WEST SALT LAKE BASE AND MERIDIAN DESCRIBED AS FOLLOWS:
BEGINNING AT A POINT ON THE WEST R.O.W. OF 4300 WEST STREET, SAID POINT BEING NORTH 89°10'04" WEST 649.00 FEET AND NORTH SAID 00°44'23" EAST 474.59 FEET FROM THE EAST 150°04'47" WEST 671.00 FEET SECTION 8 AND 00°44'23" EAST 823.01 FEET, THENCE SOUTH 89°30'43" EAST 150.00 FEET; THENCE NORTH 00°44'23" SOUTH 89°30'43" EAST 521.00 FEET ALONG SAID SOUTH R.O.W. OF 950 NORTH STREET TO THE INTERSECTION OF SAID SOUTH R.O.W. OF 950 NORTH STREET AND THE WEST R.O.W. OF SAID 4300 WEST STREET; THENCE SOUTH 00°44'23" WEST 1115.41 FEET ALONG SAID WEST R.O.W. OF 4300 WEST STREET TO THE POINT OF BEGINNING, CONTAINS 16.18 ACRES.

AGRICULTURAL NOTE
HEREBY AGREED USE IN THE AGRICULTURAL ZONES, AGRICULTURAL OPERATIONS, INCLUDING THE OPERATION OF FARM MACHINERY AND NO ALLOWED AGRICULTURAL USE SHALL BE SUBJECT TO RESTRICTION ON THE BASIS THAT IT INTERFERES WITH ACTIVITIES OF FURTHER RESIDENTS OF THIS SUBDIVISION.

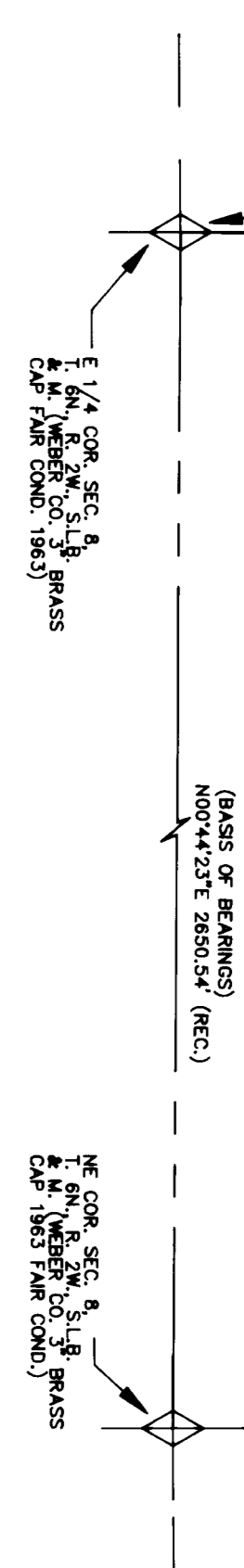
RECEIVED
NOV 18 8 596
Weber County Surveyor

SCALE: 1"= 100'
O = 5/8" X 24" LENGTH REBAR
W/CAP STAMPED 187594



ROBERT W. PENMAN
PENMAN SUBDIVISION PHASE 3

JACK MACGOWEN
& WIFE, CARRIE S.



WEBER COUNTY ENGINEER
I HEREBY CERTIFY THAT THE REQUIRED PUBLIC IMPROVEMENTS...
SIGNED THIS 4th DAY OF APRIL, 1996

WEBER COUNTY ATTORNEY
I HAVE EXAMINED THE FINANCIAL GUARANTEE AND OTHER DOCUMENTS ASSOCIATED WITH THIS SUBDIVISION PLAT AND IN MY OPINION THEY CONFORM WITH THE COUNTY ORDINANCE APPLICABLE THERETO AND NOW IN FORCE AND EFFECT.
SIGNED THIS 4th DAY OF APRIL, 1996

WEBER COUNTY PLANNING COMMISSION APPROVAL
THIS IS TO CERTIFY THAT THIS SUBDIVISION PLAT WAS DULY APPROVED BY THE WEBER COUNTY PLANNING COMMISSION ON THE 18th DAY OF APRIL, 1996.
SIGNED THIS 18th DAY OF APRIL, 1996

WEBER COUNTY SURVEYOR
I HEREBY CERTIFY THAT I HAVE INVESTIGATED THE LINES OF THE SURVEY OF THE FOREGOING PLAT AND AND FIND THEM TO BE CORRECT AND TO AGREE WITH THE LINES AND MONUMENTS ON RECORD IN THIS OFFICE.
SIGNED THIS 18th DAY OF APRIL, 1996

WEBER COUNTY COMMISSION
THIS IS TO CERTIFY THAT THIS SUBDIVISION PLAT, THE DEDICATION OF PUBLIC IMPROVEMENTS ASSOCIATED WITH THIS SUBDIVISION, AND THE LINES AND MONUMENTS ON RECORD IN THIS OFFICE COMMISSIONERS OF WEBER COUNTY, UTAH THIS 18th DAY OF APRIL, 1996.

WEBER COUNTY RECORDER
FILED FOR RECORD & RECORDED
THIS 18th DAY OF APRIL, 1996
AT _____ IN _____ OF _____
WEBER COUNTY RECORDER