

DRAWING NUMBER

000149

PLAN HOLD CORPORATION • IRVINE, CALIFORNIA

REORDER BY NUMBER 075AR

POSITION EDGE OF PRINT ON THIS LINE

DRAWING NUMBER

000149

PLAN HOLD CORPORATION • IRVINE, CALIFORNIA

REORDER BY NUMBER 075AR

POSITION EDGE OF PRINT ON THIS LINE

DRAWING NUMBER

000149

PLAN HOLD CORPORATION • IRVINE, CALIFORNIA

REORDER BY NUMBER 075AR

POSITION EDGE OF PRINT ON THIS LINE

DRAWING NUMBER

000149

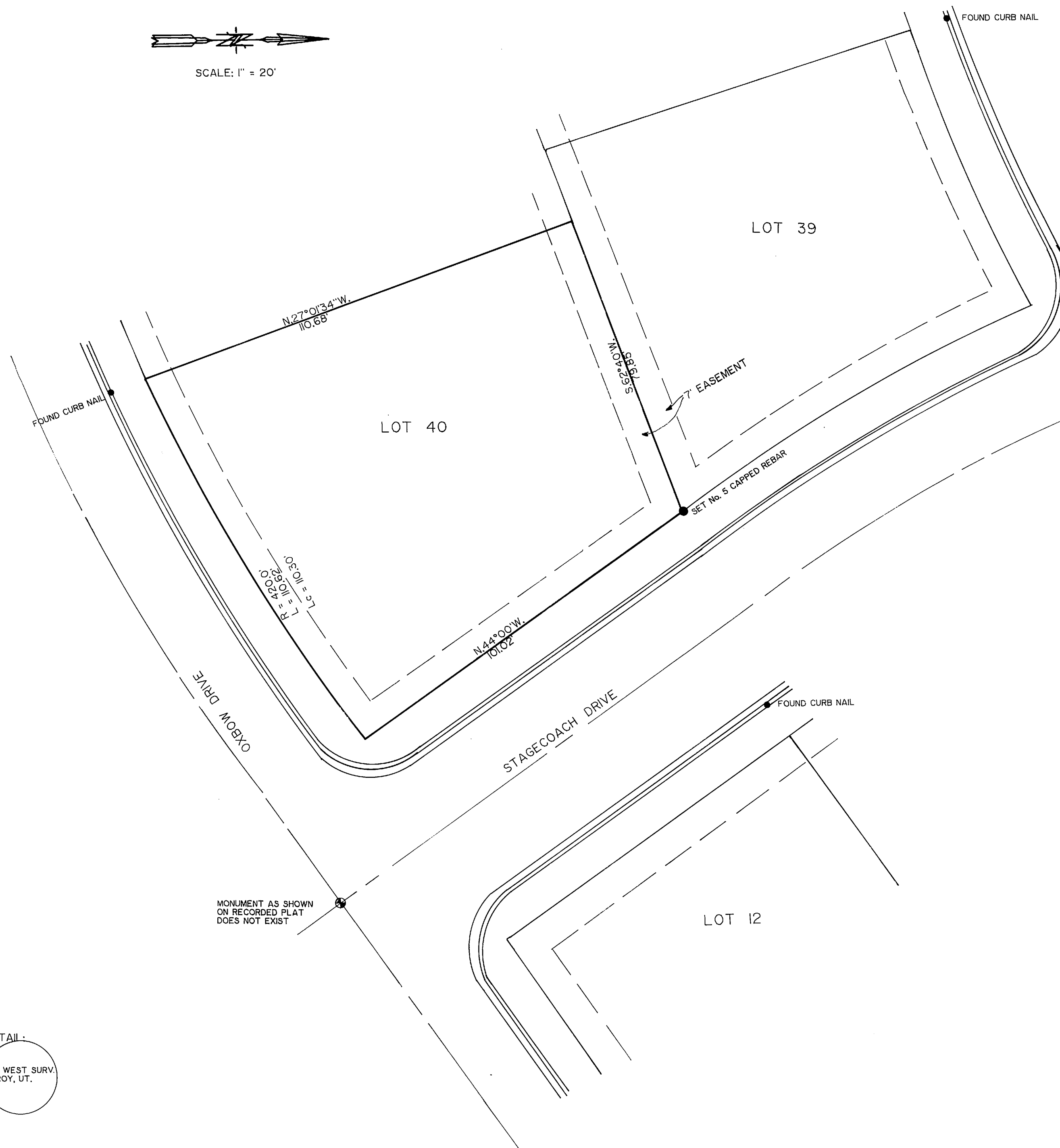
PLAN HOLD CORPORATION • IRVINE, CALIFORNIA

REORDER BY NUMBER 075AR

POSITION EDGE OF PRINT ON THIS LINE



SCALE: 1" = 20'



MONUMENT AS SHOWN ON RECORDED PLAT DOES NOT EXIST

MONUMENT AS SHOWN ON RECORDED PLAT DOES NOT EXIST

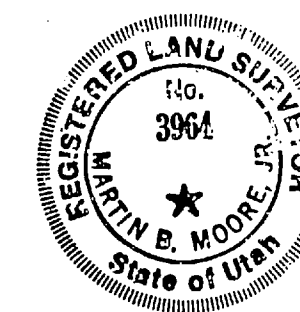
NARRATIVE OF SURVEY

THE PURPOSE OF THIS SURVEY WAS TO ESTABLISH ONE LOT CORNER, AS THE ORIGINAL CURB NAIL HAD BEEN REMOVED BY THE CONSTRUCTION OF A DRIVEWAY.

THIS JOB COULD HAVE BEEN DONE LESS EXPENSIVE TO THE CLIENT, AND MORE CERTAIN OF LOCATION, HAD THE CENTERLINE MONUMENTS THAT ARE SHOWN ON THE RECORDED SUBDIVISION PLAT HAD ACTUALLY BEEN IN PLACE, AS IT WAS. THE ONLY THING LEFT WAS CURB NAILS. IN ORDER TO COMPLY WITH RETRACEMENT REQUIREMENTS.

I, MARTIN B. MOORE JR., LICENSED LAND SURVEYOR NO. 3964 DO HEREBY CERTIFY THAT THIS PLAT WAS PREPARED FROM A SURVEY MADE ON THE GROUND BY ME, AT THE REQUEST OF RANDY WILSON, AND ON BEHALF OF MOUNTAIN WEST PROFESSIONAL LAND SURVEYORS P.C., AND IS TRUE AND CORRECT TO THE BEST OF MY KNOWLEDGE AND BELIEF.

*Martin B. Moore Jr.*  
MARTIN B. MOORE JR., P.L.S.



CAP DETAIL

MT. WEST SURV.  
ROY, UT.

RECORD OF SURVEY

FOR  
RANDY WILSON

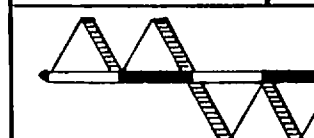
PART OF THE N.E. 1/4 SEC. 7, T5N, R1W, S.L.B.8M.  
LOT 40 RIVER VALLEY SUBDIVISION No. 9

RECEIVED

AUG 28 1988

Webster County Surveyor

Date 7-26-88 No. 88-1035 Drwn. LAM Ckd. M.B.M.



MOUNTAIN WEST PROFESSIONAL  
LAND SURVEYORS, P.C.  
Roy, Utah

000149

NE 7-5A-114