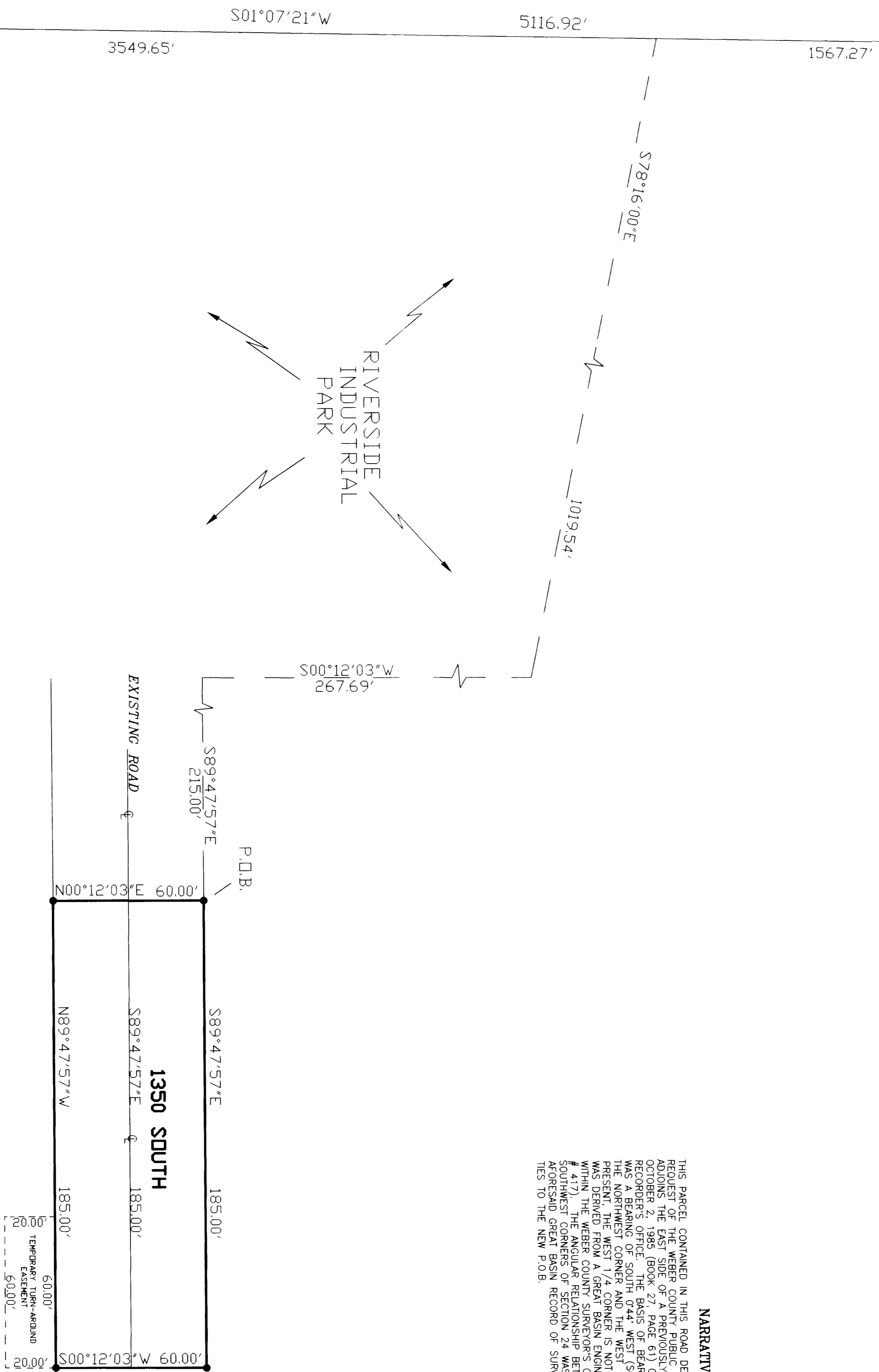


DEDICATION PLAT
FOR
1350 SOUTH STREET
PART OF THE NW 1/4 OF SEC. 24, T. 6N., R. 2W., S.L.B. & M., U.S. SURVEY
WEBER COUNTY, UTAH

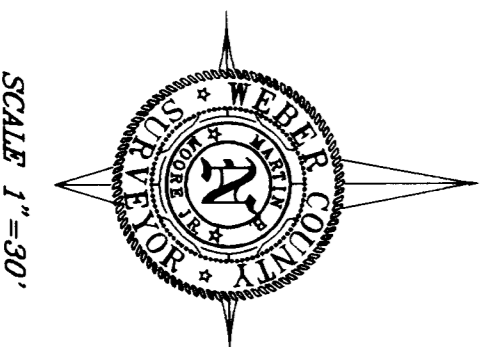


NARRATIVE

THIS PARCEL CONTAINED IN THIS ROAD DEDICATION PLAT WAS PREPARED AT THE REQUEST OF THE OWNERS OF THE PARCEL. THE PARCEL WAS PREVIOUSLY BOUNDARIED BY A SURVEY MADE BY LARRY L. SLAGOMSKA, A REGISTERED PROFESSIONAL SURVEYOR AND DUTY APPOINTED DEPUTY WEBER COUNTY SURVEYOR, ON THE EAST SIDE OF A PREVIOUSLY BOUNDARIED PARCEL, RECORDED ON OCTOBER 2, 1985 FROM A BASIS OF BEARING USED FOR THE PRIOR DEDICATION. THE PARCEL WAS A BEARING OF SOUTH 04°42' WEST (SOUTH 01°02' WEST GRID) BETWEEN THE WEST 1/4 CORNER OF SECTION 24, TOWNSHIP 6 NORTH, RANGE 2 WEST, S.L.B. & M., U.S. SURVEY AND THE WEST 1/4 CORNER OF SECTION 24, TOWNSHIP 6 NORTH, RANGE 2 WEST, S.L.B. & M., U.S. SURVEY. A PREPARED POSITION WAS DERIVED FROM A GREAT BROWN ENGINEERING RECORD OF SURVEY MADE BY GREAT BROWN ENGINEERING, INC., IN 1971, WHICH SHOWS AN ANGLE OF 117°41' BETWEEN THE WEST 1/4 CORNER OF SECTION 24, TOWNSHIP 6 NORTH, RANGE 2 WEST, S.L.B. & M., U.S. SURVEY AND THE WEST 1/4 CORNER OF SECTION 24, TOWNSHIP 6 NORTH, RANGE 2 WEST, S.L.B. & M., U.S. SURVEY. THE ANGLE RELATIONSHIP BETWEEN THE WEST 1/4 CORNER OF SECTION 24, TOWNSHIP 6 NORTH, RANGE 2 WEST, S.L.B. & M., U.S. SURVEY AND THE WEST 1/4 CORNER OF SECTION 24, TOWNSHIP 6 NORTH, RANGE 2 WEST, S.L.B. & M., U.S. SURVEY IS 117°41'.

BASIS OF BEARING

THE BASIS OF BEARING FOR THIS DEDICATION PLAT IS SOUTH 01°02' WEST AND THE MONUMENTED LINE BETWEEN THE NORTHWEST CORNER OF SECTION 24 AND THE SOUTHWEST CORNER OF SECTION 24, TOWNSHIP 6 NORTH, RANGE 2 WEST, S.L.B. & M., U.S. SURVEY AND THE UTM STATE PLANE GRID OF NAD 1987.



SCALE 1" = 60'

NOTE: ROTATION USED TO GRID

WEBER COUNTY SURVEYOR'S CERTIFICATION

I, LARRY L. SLAGOMSKA, A REGISTERED PROFESSIONAL SURVEYOR AND DUTY APPOINTED DEPUTY WEBER COUNTY SURVEYOR, ON THE EAST SIDE OF A PREVIOUSLY BOUNDARIED PARCEL, RECORDED ON OCTOBER 2, 1985 FROM A BASIS OF BEARING USED FOR THE PRIOR DEDICATION. THE PARCEL WAS A BEARING OF SOUTH 04°42' WEST (SOUTH 01°02' WEST GRID) BETWEEN THE WEST 1/4 CORNER OF SECTION 24, TOWNSHIP 6 NORTH, RANGE 2 WEST, S.L.B. & M., U.S. SURVEY AND THE WEST 1/4 CORNER OF SECTION 24, TOWNSHIP 6 NORTH, RANGE 2 WEST, S.L.B. & M., U.S. SURVEY. A PREPARED POSITION WAS DERIVED FROM A GREAT BROWN ENGINEERING RECORD OF SURVEY MADE BY GREAT BROWN ENGINEERING, INC., IN 1971, WHICH SHOWS AN ANGLE OF 117°41' BETWEEN THE WEST 1/4 CORNER OF SECTION 24, TOWNSHIP 6 NORTH, RANGE 2 WEST, S.L.B. & M., U.S. SURVEY AND THE WEST 1/4 CORNER OF SECTION 24, TOWNSHIP 6 NORTH, RANGE 2 WEST, S.L.B. & M., U.S. SURVEY. THE ANGLE RELATIONSHIP BETWEEN THE WEST 1/4 CORNER OF SECTION 24, TOWNSHIP 6 NORTH, RANGE 2 WEST, S.L.B. & M., U.S. SURVEY AND THE WEST 1/4 CORNER OF SECTION 24, TOWNSHIP 6 NORTH, RANGE 2 WEST, S.L.B. & M., U.S. SURVEY IS 117°41'.

OWNER'S DEDICATION AND CERTIFICATION

WE, THE UNDERSIGNED OWNERS OF THE HEREIN DEDICATED PARCEL, DO HEREBY DEDICATE AND CERTIFY THAT THE PARCEL IS BEING DEDICATED TO THE PUBLIC AS A PUBLIC THROUGHFARE FOREVER.

SIGNED THIS 27th DAY OF December, 1986.

SIGNED THIS ___ DAY OF _____, 19__.

ACKNOWLEDGEMENT

ON THE ___ DAY OF _____, 19__, PERSONALLY APPEARED BEFORE ME, THE UNDERSIGNED, ONE OF THE ABOVE OWNERS OF THE ABOVE DEDICATION AND CERTIFICATION, WHO BEING WE DALL Y SWORN, DID ACKNOWLEDGE TO ME AND TO THE PUBLIC THAT HE OR SHE VOLUNTARILY AND FOR THE PURPOSES HEREIN MENTIONED.

COMMISSION EXPIRES _____ NOTARY PUBLIC

WEBER COUNTY ACCEPTANCE

THIS IS TO CERTIFY THAT WE, THE WEBER COUNTY COMMISSION, HAVE REVIEWED THIS DEDICATION AND CERTIFICATION AND DO HEREBY ACCEPT AND RECORD THE SAME.

SIGNED THIS ___ DAY OF _____, 19__.

SIGNED THIS ___ DAY OF _____, 19__.

APPROVED _____ ATTEST CLERK/RECORDER (PLACE SIGN AND NAME)

WEBER COUNTY ATTORNEY

I HEREBY CERTIFY THAT THE REQUIREMENTS OF ALL APPLICABLE STATUTES AND ORDINANCES PERTAINING TO THE DEDICATION AND CERTIFICATION OF THE PARCEL HAVE BEEN COMPLETED WITH THIS DEDICATION AND CERTIFICATION.

SIGNED THIS ___ DAY OF _____, 19__.

WEBER COUNTY PLANNING COMMISSION

APPROVED BY THE WEBER COUNTY PLANNING COMMISSION, THIS ___ DAY OF _____, 19__.

CHAIRMAN'S SIGNATURE _____

WEBER COUNTY ENGINEER

I HEREBY CERTIFY THAT THE REQUIREMENTS OF ALL APPLICABLE STATUTES AND ORDINANCES PERTAINING TO THE DEDICATION AND CERTIFICATION OF THE PARCEL HAVE BEEN COMPLETED WITH THIS DEDICATION AND CERTIFICATION.

SIGNED THIS ___ DAY OF _____, 19__.

ENGINEER'S SIGNATURE _____

BOUNDARY DESCRIPTION

PART OF THE NORTHWEST QUARTER OF SECTION 24, 16N. 2W., SALT LAKE BASE AND MERIDIAN U.S. SURVEY, U.S. SOUTH 01°02' WEST UTM STATE PLANE COORDINATE SYSTEM, 1567.27 FEET AND SOUTH 78°16'00" EAST 1019.54 FEET AND SOUTH 01°02'03" WEST 867.68 FEET AND SOUTH 89°47'57" EAST 210.00 FEET FROM THE NORTHWEST CORNER OF SECTION 24, TOWNSHIP 6 NORTH, RANGE 2 WEST, S.L.B. & M., U.S. SURVEY TO THE WEST 1/4 CORNER OF SECTION 24, TOWNSHIP 6 NORTH, RANGE 2 WEST, S.L.B. & M., U.S. SURVEY. THE ANGLE RELATIONSHIP BETWEEN THE WEST 1/4 CORNER OF SECTION 24, TOWNSHIP 6 NORTH, RANGE 2 WEST, S.L.B. & M., U.S. SURVEY AND THE WEST 1/4 CORNER OF SECTION 24, TOWNSHIP 6 NORTH, RANGE 2 WEST, S.L.B. & M., U.S. SURVEY IS 117°41'.

ALSO RESERVING A 20 FOOT X 60 FOOT STRIP AS A TEMPORARY THROUGHFARE AS SHOWN ON THIS PLAT.

DEDICATION PLAT for 1350 SOUTH STREET

LINGS WITHIN THE NORTHWEST 1/4 OF SECTION 24, TOWNSHIP 6 NORTH, RANGE 2 WEST, SALT LAKE BASE AND MERIDIAN.

WEBER COUNTY RECORDER

ENTRY NO. _____ FEE PAID _____ FILED FOR RECORD AND RECORDED _____ IN BOOK _____ OF THE OFFICIAL RECORDS, RECORDED FOR _____

WEBER COUNTY RECORDER DEPUTY

