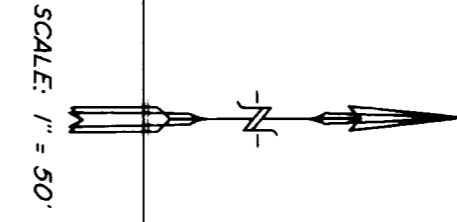
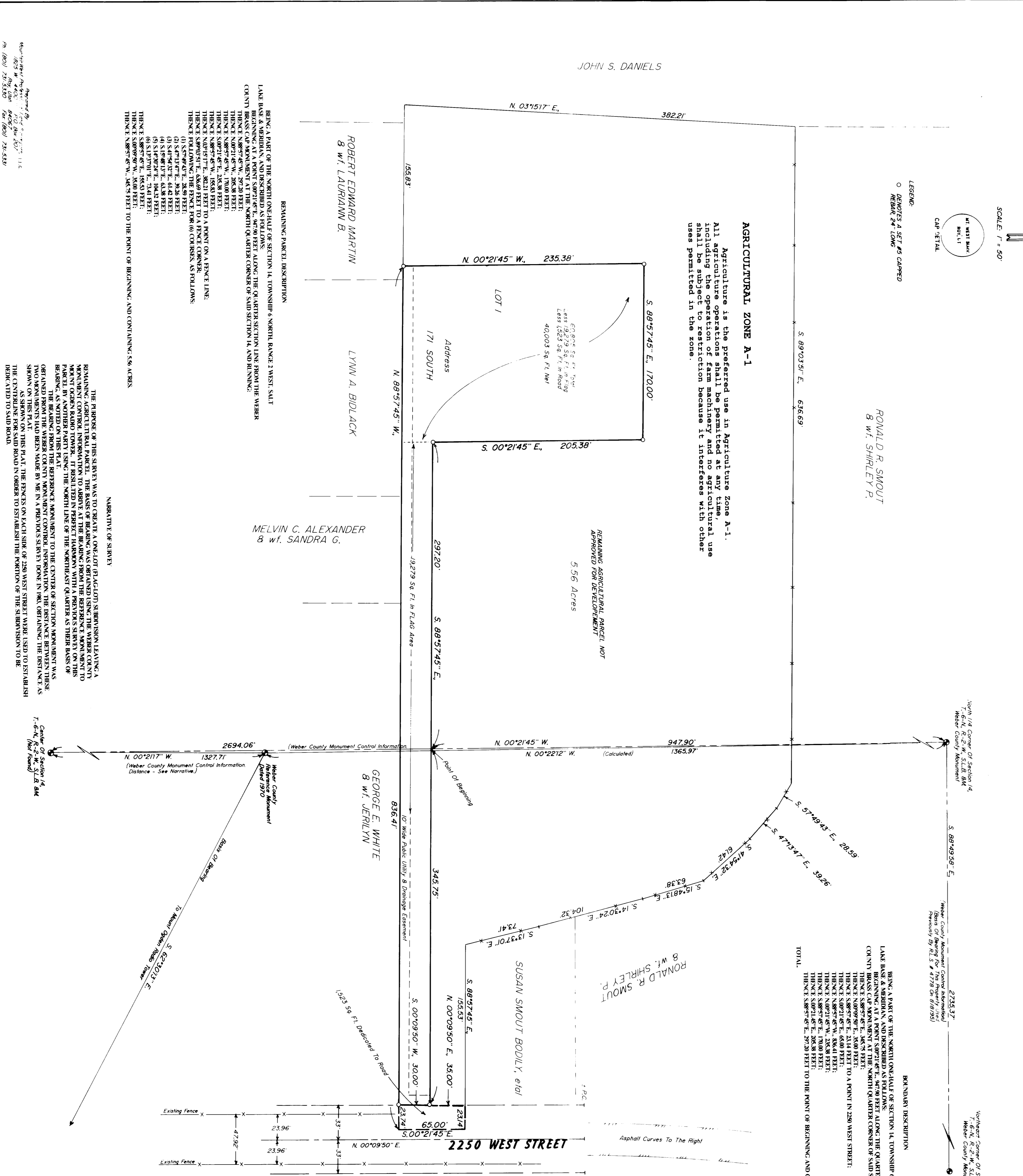


HUNSAKER'S RETREAT SUBDIVISION SLATERVILLE & MARRIOTT DISTRICTS WEBER COUNTY, UTAH MARCH, 1996

PART OF THE NORTH ONE-HALF OF SECTION 14, TOWNSHIP 6 NORTH, RANGE 2 WEST, S.L.B. & M.



BOUNDARY DESCRIPTION
BEING A PART OF THE NORTH ONE-HALF OF SECTION 14, TOWNSHIP 6 NORTH, RANGE 2 WEST, S.L.B. & M. BEGINNING AT A POINT S 89°57'45" E, 382.21 FEET ALONG THE QUARTER SECTION LINE FROM THE WEBER COUNTY RECORD OF MARRIOTT COUNTY, UTAH, AND CONTAINING 5.56 ACRES.

BOUNDARY DESCRIPTION
BEING A PART OF THE NORTH ONE-HALF OF SECTION 14, TOWNSHIP 6 NORTH, RANGE 2 WEST, S.L.B. & M. BEGINNING AT A POINT S 89°57'45" E, 382.21 FEET ALONG THE QUARTER SECTION LINE FROM THE WEBER COUNTY RECORD OF MARRIOTT COUNTY, UTAH, AND CONTAINING 5.56 ACRES.

BOUNDARY DESCRIPTION
BEING A PART OF THE NORTH ONE-HALF OF SECTION 14, TOWNSHIP 6 NORTH, RANGE 2 WEST, S.L.B. & M. BEGINNING AT A POINT S 89°57'45" E, 382.21 FEET ALONG THE QUARTER SECTION LINE FROM THE WEBER COUNTY RECORD OF MARRIOTT COUNTY, UTAH, AND CONTAINING 5.56 ACRES.

BOUNDARY DESCRIPTION
BEING A PART OF THE NORTH ONE-HALF OF SECTION 14, TOWNSHIP 6 NORTH, RANGE 2 WEST, S.L.B. & M. BEGINNING AT A POINT S 89°57'45" E, 382.21 FEET ALONG THE QUARTER SECTION LINE FROM THE WEBER COUNTY RECORD OF MARRIOTT COUNTY, UTAH, AND CONTAINING 5.56 ACRES.

BOUNDARY DESCRIPTION
BEING A PART OF THE NORTH ONE-HALF OF SECTION 14, TOWNSHIP 6 NORTH, RANGE 2 WEST, S.L.B. & M. BEGINNING AT A POINT S 89°57'45" E, 382.21 FEET ALONG THE QUARTER SECTION LINE FROM THE WEBER COUNTY RECORD OF MARRIOTT COUNTY, UTAH, AND CONTAINING 5.56 ACRES.

BOUNDARY DESCRIPTION
BEING A PART OF THE NORTH ONE-HALF OF SECTION 14, TOWNSHIP 6 NORTH, RANGE 2 WEST, S.L.B. & M. BEGINNING AT A POINT S 89°57'45" E, 382.21 FEET ALONG THE QUARTER SECTION LINE FROM THE WEBER COUNTY RECORD OF MARRIOTT COUNTY, UTAH, AND CONTAINING 5.56 ACRES.

BOUNDARY DESCRIPTION
BEING A PART OF THE NORTH ONE-HALF OF SECTION 14, TOWNSHIP 6 NORTH, RANGE 2 WEST, S.L.B. & M. BEGINNING AT A POINT S 89°57'45" E, 382.21 FEET ALONG THE QUARTER SECTION LINE FROM THE WEBER COUNTY RECORD OF MARRIOTT COUNTY, UTAH, AND CONTAINING 5.56 ACRES.

BOUNDARY DESCRIPTION
BEING A PART OF THE NORTH ONE-HALF OF SECTION 14, TOWNSHIP 6 NORTH, RANGE 2 WEST, S.L.B. & M. BEGINNING AT A POINT S 89°57'45" E, 382.21 FEET ALONG THE QUARTER SECTION LINE FROM THE WEBER COUNTY RECORD OF MARRIOTT COUNTY, UTAH, AND CONTAINING 5.56 ACRES.

BOUNDARY DESCRIPTION
BEING A PART OF THE NORTH ONE-HALF OF SECTION 14, TOWNSHIP 6 NORTH, RANGE 2 WEST, S.L.B. & M. BEGINNING AT A POINT S 89°57'45" E, 382.21 FEET ALONG THE QUARTER SECTION LINE FROM THE WEBER COUNTY RECORD OF MARRIOTT COUNTY, UTAH, AND CONTAINING 5.56 ACRES.

BOUNDARY DESCRIPTION
BEING A PART OF THE NORTH ONE-HALF OF SECTION 14, TOWNSHIP 6 NORTH, RANGE 2 WEST, S.L.B. & M. BEGINNING AT A POINT S 89°57'45" E, 382.21 FEET ALONG THE QUARTER SECTION LINE FROM THE WEBER COUNTY RECORD OF MARRIOTT COUNTY, UTAH, AND CONTAINING 5.56 ACRES.

BOUNDARY DESCRIPTION
BEING A PART OF THE NORTH ONE-HALF OF SECTION 14, TOWNSHIP 6 NORTH, RANGE 2 WEST, S.L.B. & M. BEGINNING AT A POINT S 89°57'45" E, 382.21 FEET ALONG THE QUARTER SECTION LINE FROM THE WEBER COUNTY RECORD OF MARRIOTT COUNTY, UTAH, AND CONTAINING 5.56 ACRES.

BOUNDARY DESCRIPTION
BEING A PART OF THE NORTH ONE-HALF OF SECTION 14, TOWNSHIP 6 NORTH, RANGE 2 WEST, S.L.B. & M. BEGINNING AT A POINT S 89°57'45" E, 382.21 FEET ALONG THE QUARTER SECTION LINE FROM THE WEBER COUNTY RECORD OF MARRIOTT COUNTY, UTAH, AND CONTAINING 5.56 ACRES.

BOUNDARY DESCRIPTION
BEING A PART OF THE NORTH ONE-HALF OF SECTION 14, TOWNSHIP 6 NORTH, RANGE 2 WEST, S.L.B. & M. BEGINNING AT A POINT S 89°57'45" E, 382.21 FEET ALONG THE QUARTER SECTION LINE FROM THE WEBER COUNTY RECORD OF MARRIOTT COUNTY, UTAH, AND CONTAINING 5.56 ACRES.

BOUNDARY DESCRIPTION
BEING A PART OF THE NORTH ONE-HALF OF SECTION 14, TOWNSHIP 6 NORTH, RANGE 2 WEST, S.L.B. & M. BEGINNING AT A POINT S 89°57'45" E, 382.21 FEET ALONG THE QUARTER SECTION LINE FROM THE WEBER COUNTY RECORD OF MARRIOTT COUNTY, UTAH, AND CONTAINING 5.56 ACRES.

BOUNDARY DESCRIPTION
BEING A PART OF THE NORTH ONE-HALF OF SECTION 14, TOWNSHIP 6 NORTH, RANGE 2 WEST, S.L.B. & M. BEGINNING AT A POINT S 89°57'45" E, 382.21 FEET ALONG THE QUARTER SECTION LINE FROM THE WEBER COUNTY RECORD OF MARRIOTT COUNTY, UTAH, AND CONTAINING 5.56 ACRES.

BOUNDARY DESCRIPTION
BEING A PART OF THE NORTH ONE-HALF OF SECTION 14, TOWNSHIP 6 NORTH, RANGE 2 WEST, S.L.B. & M. BEGINNING AT A POINT S 89°57'45" E, 382.21 FEET ALONG THE QUARTER SECTION LINE FROM THE WEBER COUNTY RECORD OF MARRIOTT COUNTY, UTAH, AND CONTAINING 5.56 ACRES.

BOUNDARY DESCRIPTION
BEING A PART OF THE NORTH ONE-HALF OF SECTION 14, TOWNSHIP 6 NORTH, RANGE 2 WEST, S.L.B. & M. BEGINNING AT A POINT S 89°57'45" E, 382.21 FEET ALONG THE QUARTER SECTION LINE FROM THE WEBER COUNTY RECORD OF MARRIOTT COUNTY, UTAH, AND CONTAINING 5.56 ACRES.

BOUNDARY DESCRIPTION
BEING A PART OF THE NORTH ONE-HALF OF SECTION 14, TOWNSHIP 6 NORTH, RANGE 2 WEST, S.L.B. & M. BEGINNING AT A POINT S 89°57'45" E, 382.21 FEET ALONG THE QUARTER SECTION LINE FROM THE WEBER COUNTY RECORD OF MARRIOTT COUNTY, UTAH, AND CONTAINING 5.56 ACRES.

OWNER'S DECLARATION
WE, THE UNDERSIGNED OWNERS OF THE HEREIN DESCRIBED TRACT OF LAND, DO HEREBY CERTIFY THAT WE ARE THE LEGAL AND BENEFICIAL OWNERS OF SAID TRACT OF LAND AND THAT WE HAVE FULL POWER AND AUTHORITY TO MAKE, EXECUTE, SIGN, AND CONVEY TO WEBER COUNTY, UTAH, ALL THOSE PARTS OF PORTIONS OF SAID TRACT OF LAND AS SHOWN ON THE ATTACHED MAP AND TO MAKE SUCH PARTS OF SAID TRACT OF LAND PUBLIC HIGHWAYS AND TO HEREBY GRANT AND RESERVE A RESERVATION RIGHT AND EASEMENT OVER, UPON, AND UNDER THE SAID TRACT OF LAND FOR THE INSTALLATION, MAINTENANCE, AND OPERATION OF PUBLIC UTILITY LINES AND STRUCTURES AND FOR THE PRESERVATION OF WATER DRAINAGE CHANNELS IN THEIR NATURAL STATE. WE HEREBY RESERVE AND RESERVE WITHIN SUCH EASEMENTS ALL RIGHTS AND INTERESTS IN SAID TRACT OF LAND NOT HEREIN EXPRESSLY RESERVED.

ACKNOWLEDGMENT
STATE OF UTAH
COUNTY OF UTAH
ON THIS _____ DAY OF _____, 19____, I, _____, PERSONALLY APPEARED BEFORE ME, THE UNDERSIGNED NOTARY PUBLIC, SIGNER OF THE ABOVE DECLARATION, IN MY CAPACITY AS NOTARY PUBLIC, AND FOR THE PURPOSES AND CONSIDERATIONS THEREIN EXPRESSED.

MY COMMISSION EXPIRES _____
RECEIVED AT _____
NOTARY PUBLIC _____

WEBER COUNTY COMMISSION ACCEPTANCE
THIS IS TO CERTIFY THAT THIS SUBDIVISION PLAN, THE INDICATION OF STREETS AND OTHER PUBLIC WAYS AND FINANCIAL GUARANTEE OF PUBLIC IMPROVEMENTS AND OTHER PUBLIC UTILITIES AND STRUCTURES AND THE AMOUNT OF FINANCIAL GUARANTEE OF PUBLIC IMPROVEMENTS AND OTHER PUBLIC UTILITIES AND STRUCTURES OF WEBER COUNTY, UTAH, THIS _____ DAY OF _____, 19____, WAS APPROVED BY THE BOARD OF COMMISSIONERS OF WEBER COUNTY, UTAH, AND IS HEREBY ACCEPTED AND RECORDED BY ME, THE UNDERSIGNED NOTARY PUBLIC, IN MY CAPACITY AS NOTARY PUBLIC.

WEBER COUNTY COMMISSIONER _____
TITLE _____
ADDRESS _____

WEBER COUNTY ENGINEER
I HAVE EXAMINED THE FINANCIAL GUARANTEE AND OTHER DOCUMENTS ASSOCIATED WITH THIS SUBDIVISION PLAN AND IN MY OPINION THE ENGINEER WITH THE COUNTY ENGINEER'S ASSOCIATION HAS BEEN IN FULL COMPLIANCE WITH THE REQUIREMENTS OF THE UTAH SUBDIVISION ACT AND THE RULES AND REGULATIONS THEREOF.

SIGNED THIS _____ DAY OF _____, 19____.
SIGNATURE _____

WEBER COUNTY PLANNING APPROVAL
THIS IS TO CERTIFY THAT THIS SUBDIVISION PLAN WAS FULLY APPROVED BY THE WEBER COUNTY PLANNING COMMISSION ON THE _____ DAY OF _____, 19____.

WEBER COUNTY PLANNING COMMISSION APPROVAL
CHAIRMAN, WEBER COUNTY PLANNING COMMISSION _____
MEMBER _____

WEBER COUNTY SURVEYOR
I HEREBY CERTIFY THAT I HAVE SUPERVISED THE LINES OF SURVEY OF THE FOREGOING PLAT AND THAT THE LINES OF SURVEY AND THE AMOUNT OF FINANCIAL GUARANTEE OF PUBLIC IMPROVEMENTS AND OTHER PUBLIC UTILITIES AND STRUCTURES OF WEBER COUNTY, UTAH, AND THE AMOUNT OF FINANCIAL GUARANTEE OF PUBLIC IMPROVEMENTS AND OTHER PUBLIC UTILITIES AND STRUCTURES OF WEBER COUNTY, UTAH, ARE CORRECT AND TO AGREE WITH THE LINES AND MONUMENTS ON RECORD IN THIS OFFICE.

SIGNED THIS _____ DAY OF _____, 19____.
SIGNATURE _____

WEBER COUNTY SURVEYOR
I, _____, SURVEYOR, DO HEREBY CERTIFY THAT THE FOREGOING PLAT AND LEGAL DESCRIPTION OF THE LAND DESCRIBED THEREIN, AND THE AMOUNT OF FINANCIAL GUARANTEE OF PUBLIC IMPROVEMENTS AND OTHER PUBLIC UTILITIES AND STRUCTURES OF WEBER COUNTY, UTAH, AND THE AMOUNT OF FINANCIAL GUARANTEE OF PUBLIC IMPROVEMENTS AND OTHER PUBLIC UTILITIES AND STRUCTURES OF WEBER COUNTY, UTAH, ARE CORRECT AND TO AGREE WITH THE LINES AND MONUMENTS ON RECORD IN THIS OFFICE.

SIGNED THIS _____ DAY OF _____, 19____.
SIGNATURE _____

RECEIVED
DEC 29 1996
Webster County Surveyor

COUNTY RECORDER
Entry No. _____ Fee Paid _____
Recorded _____
In Book _____ of Office _____
County Recorder _____