

REVISIONS	
1	
2	
3	
4	
5	
6	

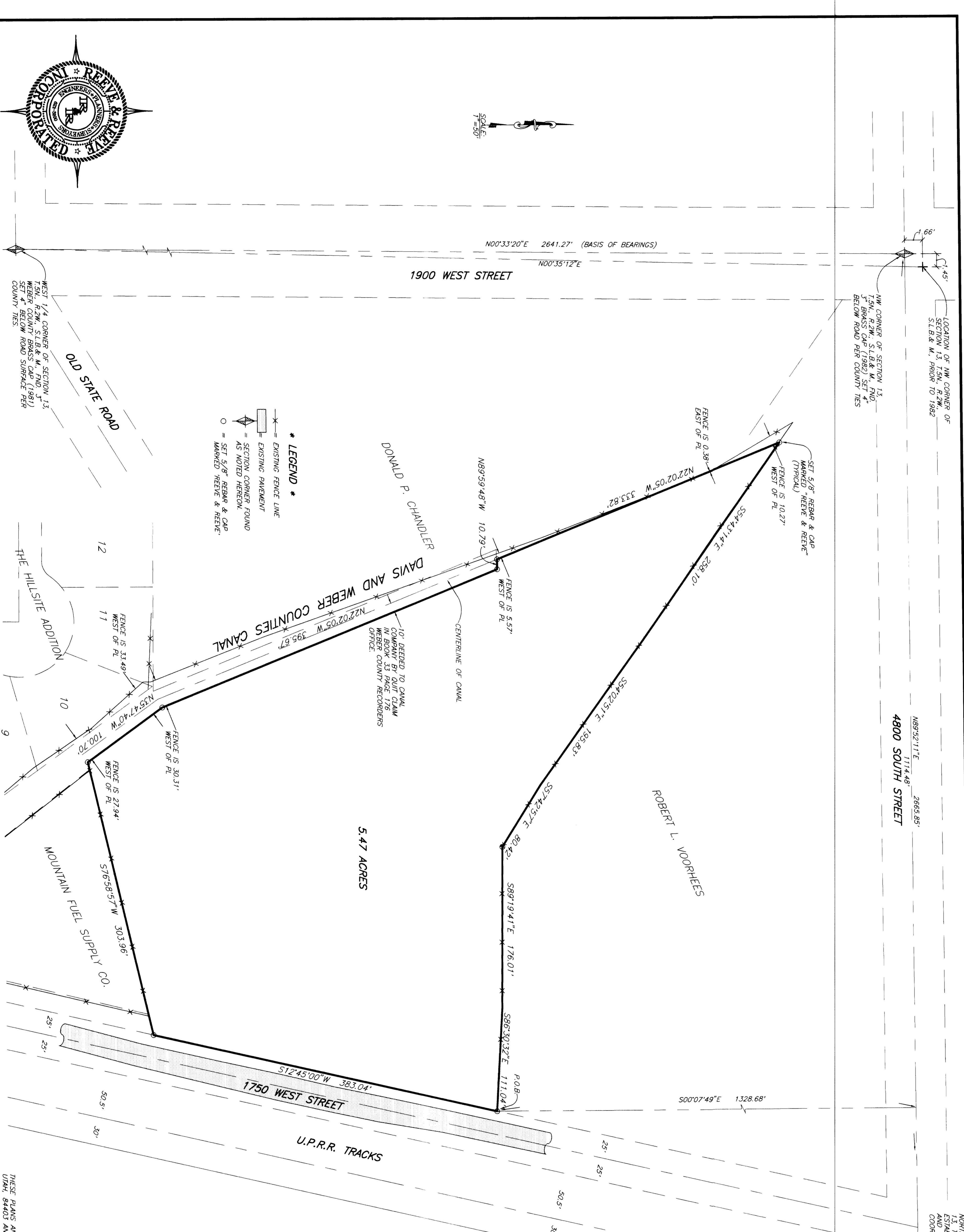
PROJECT NO.	1584-01	DRAWING	R WILFORD
DATE	1-2-97	DRAWN	JAC
SCALE	1"=50'	CHECKED	

REEVE & REEVE, INC.
 ENGINEERS PLANNERS & SURVEYORS
 5870 GARDEN, UTAH 84401 (801) 621-3100 FAX (801) 621-2666

RECORD OF SURVEY

TIM RASMUSSEN PROPERTY
 A PART OF THE NW 1/4 OF SECTION 13, T29N, R22W, SLB&M, TIES AND COUNTY STATE PLANE COORDINATE INFORMATION

SHEET	1
SHEETS	1



SURVEYOR'S CERTIFICATE
 I, JOHN P. REEVE, DEPUTY REGISTERED LAND SURVEYOR NO. 22-14666-2201, DO HEREBY CERTIFY THAT THIS PLAT WAS PREPARED FROM A SURVEY MADE BY ME, OR UNDER MY SUPERVISION, ON THE GROUND AT THE REQUEST OF AND EXCLUSIVELY FOR THE PARTY OR PARTIES NAMED HEREON, AND THAT THE SURVEY IS TRUE AND CORRECT TO THE BEST OF MY KNOWLEDGE AND BELIEF.

SIGNED THIS 14 DAY OF JANUARY 1997
 22-14666-2201
 UTAH LICENSE NUMBER
 SIGNATURE
 JOHN P. REEVE

NARRATIVE
 THE PURPOSE OF THIS SURVEY WAS TO ESTABLISH THE BOUNDARY OF THE NW 1/4 CORNER OF SECTION 13, T29N, R22W, SLB&M, TIES AND COUNTY STATE PLANE COORDINATE INFORMATION. PRIOR TO 1982 WAS USED TO DETERMINE THE LOCATION OF THESE DEEDS. THE NORTH LINE WAS ESTABLISHED BY A FENCE LINE AGREEMENT WITH ROBERT L. VOORHEES, 250 WEST STREET, THE SOUTH LINE WAS ESTABLISHED USING AN EXISTING FENCE LINE AS THE BEST EVIDENCE OF THE DEED. THE WEST LINE WAS ESTABLISHED ON THE CENTERLINE OF SAID CANAL, AND ON THE NORTH END BY THE CENTERLINE OF SAID CANAL.

RECEIVED
 JAN 15 1997
 WEBER COUNTY SURVEYOR