

# LOT 25, BEUS HILLS SUBDIVISION

A PART OF THE NE 1/4 OF SECTION 10, T20N, R1W, S14E, M. U.S. SURVEY  
GOODY CTR., WEBER COUNTY, UTAH  
JANUARY, 1997

I, JOHN P. REEVE, UTAH REGISTERED LAND SURVEYOR NO. 22-14686-2201, DO HEREBY CERTIFY THAT THE ABOVE DESCRIBED SURVEY WAS MADE BY ME OR UNDER MY SUPERVISION, ON THE GROUND, AT THE REQUEST OF AND EXCLUSIVELY FOR TRENT THOMAS AND ON BEHALF OF REEVE & REEVE, INC. AND IS TRUE AND CORRECT TO THE BEST OF MY KNOWLEDGE AND BELIEF.

SIGNED THIS 19 DAY OF JANUARY, 1997

UTAH LICENSE NUMBER 22-14686-2201

UTAH LICENSE NUMBER

SIGNATURE

### NARRATIVE

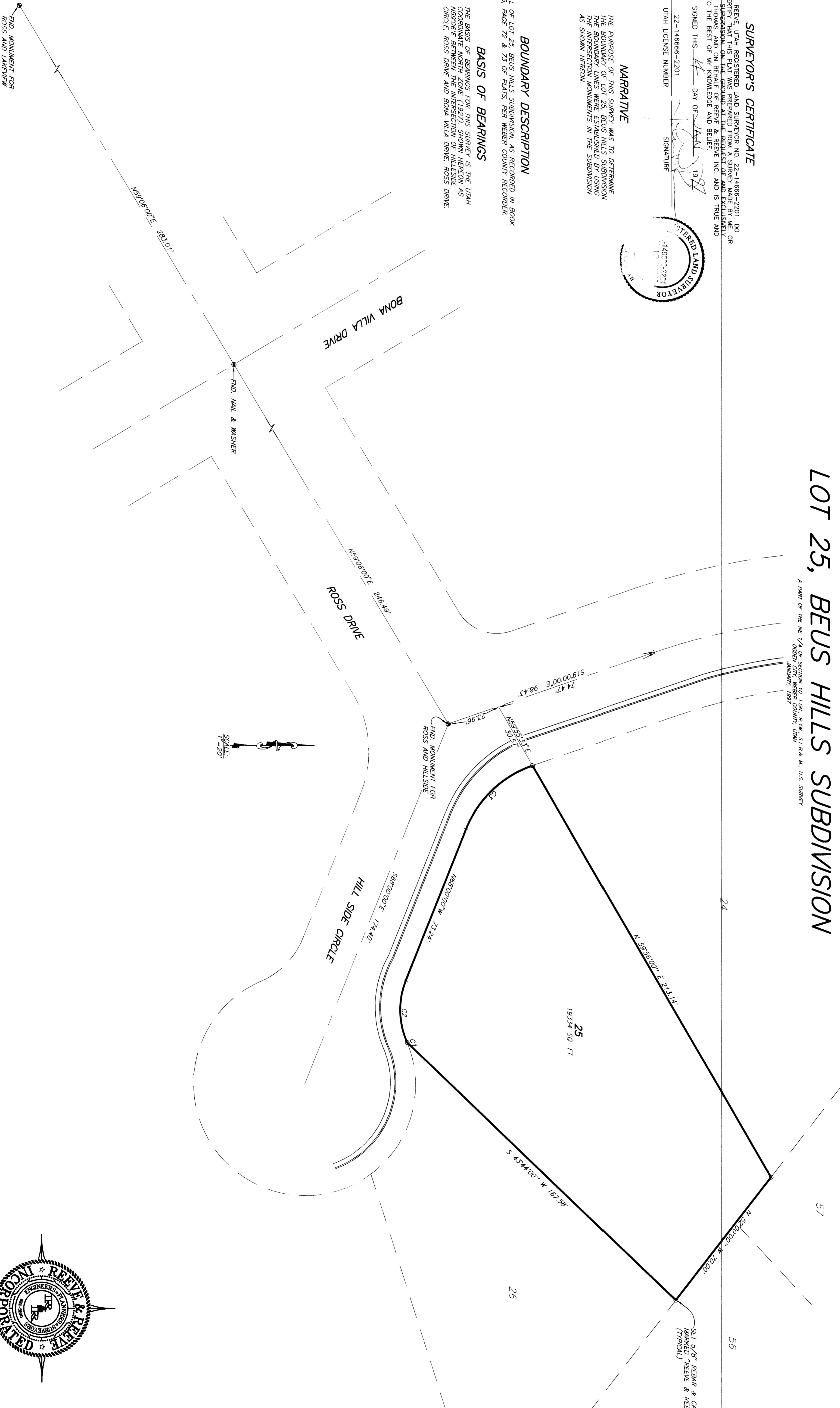
THE PURPOSE OF THIS SURVEY WAS TO DETERMINE THE BOUNDARY OF LOT 25, BEUS HILLS SUBDIVISION AS SHOWN HEREON AND TO LOCATE AND IDENTIFY THE INTERSECTION MONUMENTS IN THE SUBDIVISION AS SHOWN HEREON.

### BOUNDARY DESCRIPTION

ALL OF LOT 25, BEUS HILLS SUBDIVISION, AS RECORDED IN BOOK 15, PAGE 72 & 73 OF PLATS, PER WEBER COUNTY RECORDER.

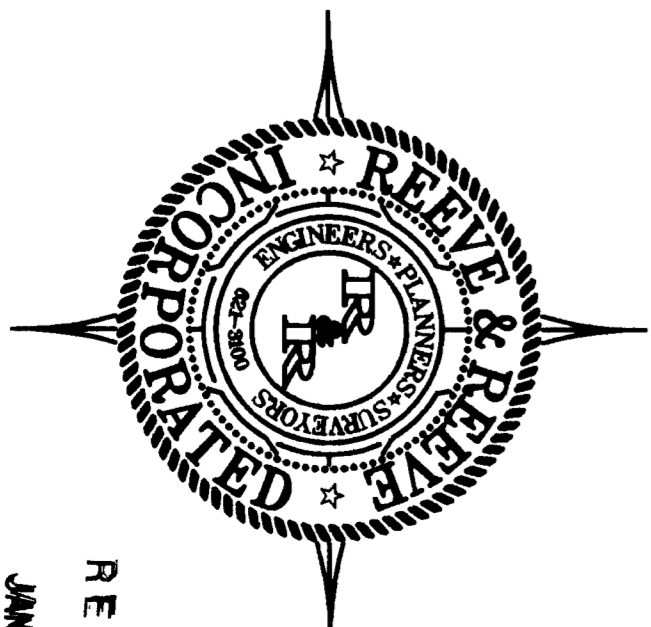
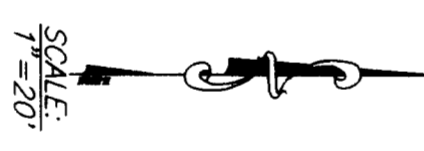
### BASIS OF BEARINGS

THE BASIS OF BEARINGS FOR THIS SURVEY IS THE UTAH COORDINATE NORTH ZONE (1983), SHOWN HEREON AS ORIGIN FOR ROSS DRIVE AND BONA WILLA DRIVE. ROSS DRIVE, BONA WILLA DRIVE AND HILL SIDE DRIVE.



### CURVE INFORMATION

CURVE	LENGTH	DETA	PIVOT	TANGENT	DIRECTION	CHORD
C1	0.66'	00°45'17\"	50.00'	0.33'	N69°23'17\"E	0.66'
C2	27.77'	44°59'45\"	35.36'	14.65'	N97°20'29\"E	27.06'
C3	42.76'	49°00'00\"	50.00'	22.79'	N43°29'53\"W	41.47'



RECEIVED  
JAN 13 1997  
WEBER COUNTY SURVEYOR

THESE PLANS AND SPECIFICATIONS ARE THE PROPERTY OF REEVE & REEVE, INC., 3670 QUINCY AVE., GOODY, UTAH, 84401 AND SHALL NOT BE COPIED OR REPRODUCED OR REPRODUCED WITHOUT THEIR WRITTEN PERMISSION.

REVISIONS
1. 1-14-97 CAD
2.
3.
4.
5.
6.

PROJECT NO. 2086-01  
DATE 8-17-96  
SCALE 1"=20'

DESIGNED BY JMK  
DRAWN BY JMK  
CHECKED BY JMK

**REEVE & REEVE, INC.**  
ENGINEERS PLANNERS & SURVEYORS  
3670 QUINCY AVE. SUITE NO. 1  
GOODY, UTAH 84401  
(801) 621-1100 FAX (801) 621-2666

RECORD OF SURVEY

**TRENT THOMAS PROPERTY**  
A PART OF THE NE 1/4 OF SECTION 10, T20N, R1W, S14E, M. U.S. SURVEY  
GOODY CTR., WEBER COUNTY, UTAH  
JANUARY, 1997

SHEET 1  
SHEETS 1