

REVISIONS

1.		4
2.		5
3.		6

PROJECT NO. 1934-01

DATE 1-2-97

SCALE 1"=50'

DESIGNED: R. M. GORDON

DRAWN: J. K.

CHECKED: J. K.

**REEVE & REEVE, INC.**

ENGINEERS, PLANNERS & SURVEYORS

500 GARDEN UTAH #4401

(801) 621-3100 FAX (801) 621-2866

**RECORD OF SURVEY**

**TIM RASMUSSEN PROPERTY**

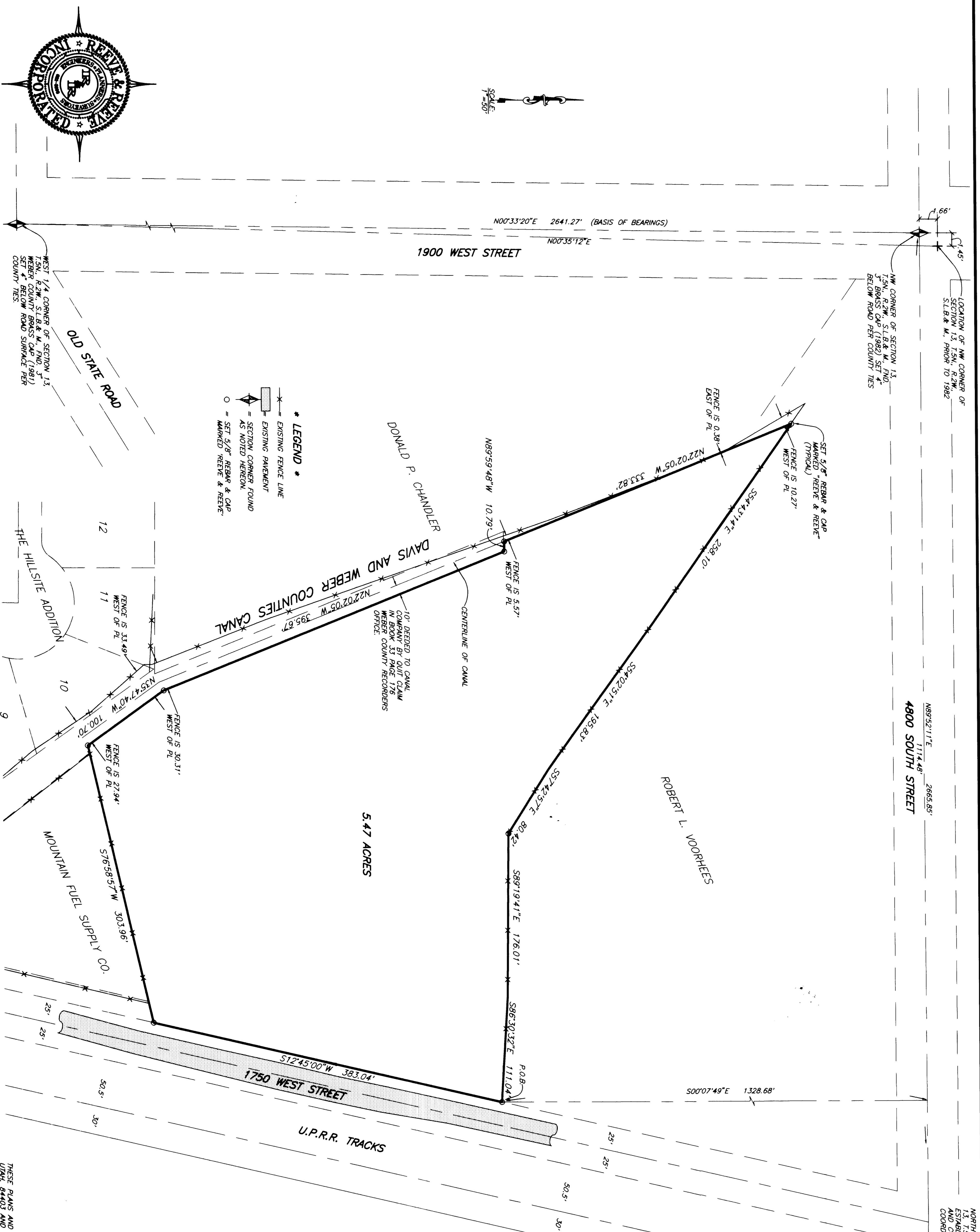
A PART OF THE NW 1/4 OF SECTION 13, T.5N., R.2W., S.1&2 M., U.S. SURVEY

WABER COUNTY, UTAH

APRIL 1997

SHEET 1

SHEETS 1



**LEGEND**

- EXISTING FENCE LINE
- EXISTING PAVEMENT
- SECTION CORNER FOUND AS NOTED HEREON.
- SET 5/8" REBAR & CAP MARKED REEVE & REEVE

**BOUNDARY DESCRIPTION**

PART OF THE NW 1/4 OF SECTION 13, T.5N., R.2W., S.1&2 M., U.S. SURVEY, DESCRIBED AS FOLLOWS:

BEGINNING AT A POINT WHICH IS ON THE WEST LINE OF 1750 WEST STREET SAID POINT BEING APPROX. 126.84 FEET FROM THE NW CORNER OF SAID SECTION 13; THENCE S74°45'00\"/>

**BASIS OF BEARINGS**

THE BASIS OF BEARINGS FOR THIS SURVEY IS THE UTM COORDINATE SYSTEM SET BY A CORNER AND THE NW CORNER OF SECTION 13, T.5N., R.2W., S.1&2 M., U.S. SURVEY, SHOWN HEREON AS N00°33'20\"/>

**NARRATIVE**

THE PURPOSE OF THIS SURVEY WAS TO ESTABLISH THE BOUNDARY OF THE BIG HORN PARCEL. THE LOCATION THEREIN THE CORNER OF THESE DEEDS THE NORTH LINE WAS ESTABLISHED BY A FENCE LINE AGREEMENT WITH ROBERT L. VOORHEES. THE EAST LINE WAS ESTABLISHED BY THE WESTERLY END OF THE DEED DESCRIBED IN THE DEED OF ROBERT L. VOORHEES. THE WEST LINE WAS ESTABLISHED ON THE SOUTH END BY THE EASTERN NORTH END OF THE CENTERLINE OF SAID CANAL AND ON THE NORTH END BY THE CENTERLINE OF SAID CANAL.

**SURVEYOR'S CERTIFICATE**

I, JOHN R. REEVE, UTAH REGISTERED LAND SURVEYOR NO. 22-14686-2201, DO OR UNDER MY SUPERVISION, ON BEHALF OF REEVE & REEVE, INC. AND IS TRUE AND CORRECT TO THE BEST OF MY KNOWLEDGE AND BELIEF.

SIGNED THIS 4 DAY OF FEBRUARY 1997.

22-14686-2201  
UTAH LICENSE NUMBER

\_\_\_\_\_  
SIGNATURE JOHN R. REEVE

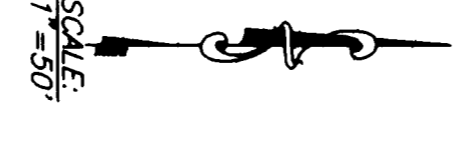
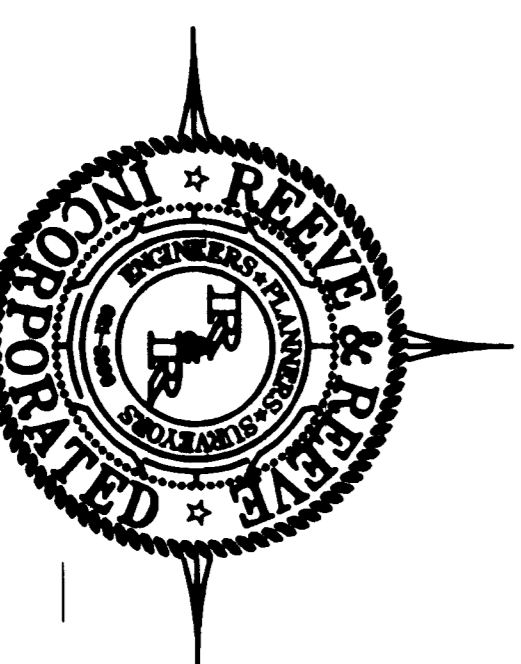
UTAH LAND SURVEYOR

**RECEIVED**

FEB 05 1997

WABER COUNTY SURVEYOR

THESE PLANS AND SPECIFICATIONS ARE THE PROPERTY OF REEVE & REEVE, INC., 5670 QUINCY AVE., GARDEN UTAH, 84403 AND SHALL NOT BE COPIED OR REPRODUCED WITHOUT THEIR WRITTEN PERMISSION.



NORTH 1/4 CORNER OF SECTION 13, T.5N., R.2W., S.1&2 M., ESTABLISHED PER COUNTY RECORDS. COORDINATE INFORMATION.

N89°52'11\"/>

LOCATION OF NW CORNER OF SECTION 13, T.5N., R.2W., S.1&2 M., PRIOR TO 1982

1.66'

1.45'

1.66'

1.45'

1.66'

1.45'