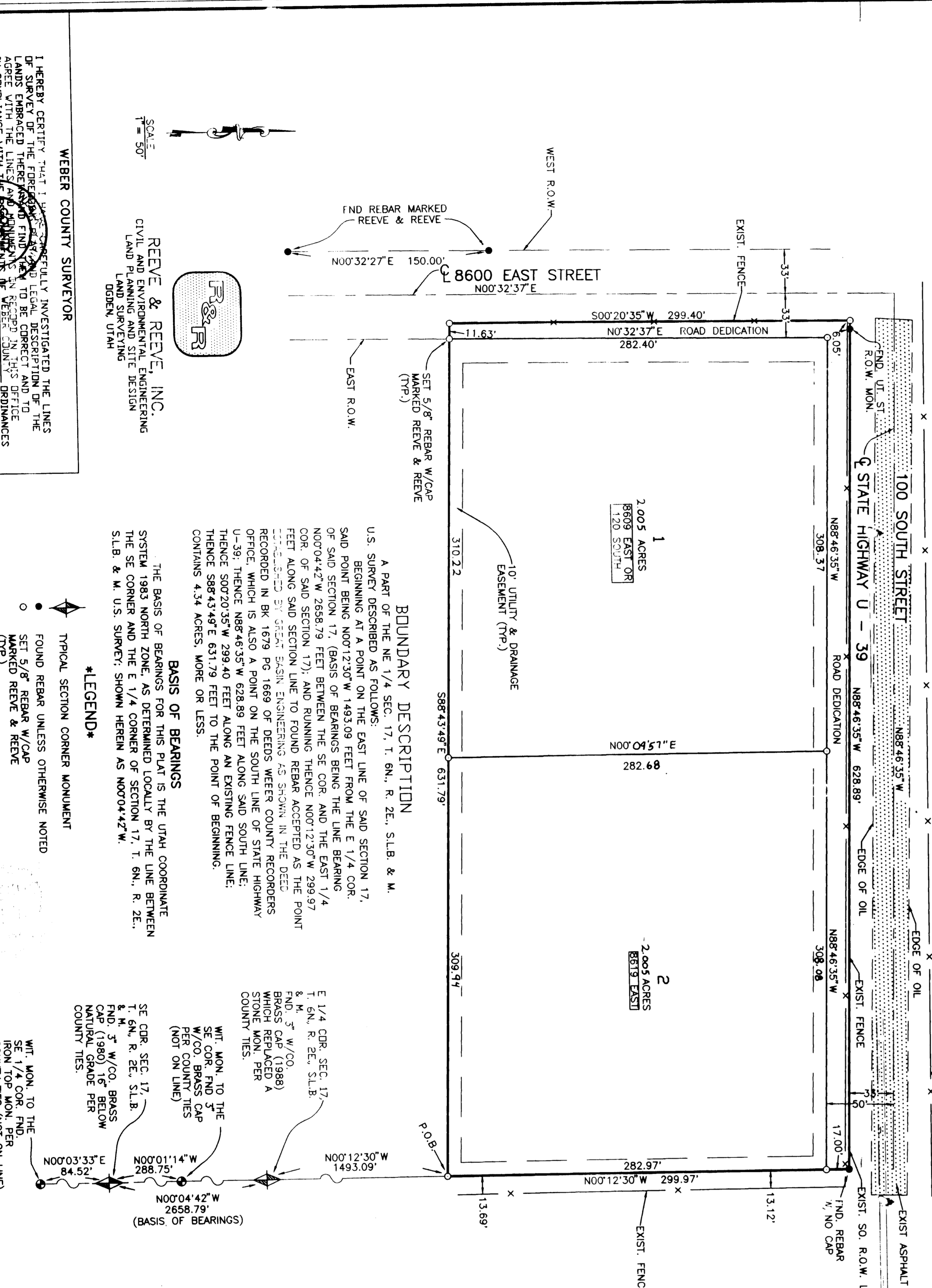


15-04

# CHRISTENSEN ACRES SUBDIVISION

PART OF THE NE 1/4 OF SEC 17, T. 6N., R. 2E., S.L.B. & M., U.S. SURVEY  
WEBER COUNTY, UTAH  
MAY, 1995



WEBER COUNTY SURVEYOR

I HEREBY CERTIFY THAT I HAVE PERSONALLY INVESTIGATED THE LINES OF SAID SURVEY AND THAT THE BEARINGS AND DISTANCES ARE CORRECT AND TO AGREE WITH THE LINES AND MONUMENTS SHOWN ON THIS PLAT AND TO BE CORRECT AND TO AGREE WITH THE LINES AND MONUMENTS SHOWN ON THIS PLAT AND TO BE CORRECT AND TO AGREE WITH THE LINES AND MONUMENTS SHOWN ON THIS PLAT.

APPROVED: *John P. Rebe*  
WEBER COUNTY PLANNING COMMISSION  
MAY 19 1995

WEBER COUNTY ENGINEER

I HEREBY CERTIFY THAT THE REQUIREMENTS OF ALL APPLICABLE STATUTES AND ORDINANCES RELATIVE TO THE SUBDIVISION OF LAND HAVE BEEN COMPLIED WITH DATED THIS 12 DAY OF MAY 1995.

*John P. Rebe*

WEBER COUNTY ATTORNEY

I HEREBY CERTIFY THAT THE REQUIREMENTS OF ALL APPLICABLE STATUTES AND ORDINANCES RELATIVE TO THE SUBDIVISION OF LAND HAVE BEEN COMPLIED WITH DATED THIS 19 DAY OF MAY 1995.

*John P. Rebe*

WEBER COUNTY RECORDER

WEBER COUNTY RECORDER

RECORDED FOR: WEBER COUNTY

RECORDED BY: *John P. Rebe*

RECORDED ON: MAY 19 1995

RECORDED IN: BOOK 100 PAGE 100

WEBER COUNTY RECORDER

RECORDED FOR: WEBER COUNTY

RECORDED BY: *John P. Rebe*

RECORDED ON: MAY 19 1995

RECORDED IN: BOOK 100 PAGE 100

**ACKNOWLEDGEMENT**

STATE OF UTAH, ) ss.  
COUNTY OF UTAH, )

ON THE 16 DAY OF April 1995 PERSONALLY APPEARED  
John P. Rebe, )  
Notary Public, )  
STATE OF UTAH )  
COUNTY OF UTAH )

**OWNERS DEDICATION AND CERTIFICATION**

WE, THE UNDERSIGNED, OWNERS OF THE HERETO-FOR DESCRIBED TRACT OF LAND, HEREBY SET APART AND SUBDIVIDE THE SAME INTO LOTS, STREETS, ALLEYS, AND HEREBY DEDICATE, GRANT, AND CONVEY TO THE PUBLIC OF THE COUNTY OF WEBER, UTAH, ALL THOSE PARTS OR PORTIONS OF SAID TRACT OF LAND DESIGNATED BY THESE STRIPS AS EASEMENTS FOR PUBLIC UTILITY AND DRAINAGE PURPOSES AS SHOWN AND OPERATED BY PUBLIC UTILITY SERVICE LINES AND DRAINAGE AS MAY BE AUTHORIZED BY WEBER COUNTY.

THE UNDERSIGNED HEREBY CERTIFY THAT THIS SUBDIVISION HAS MET ALL THE REQUIREMENTS OF THE ORDINANCES.

SIGNED THIS 13 DAY OF MAY 1995  
22-14666-2201  
UTAH LICENSE NUMBER  
JOHN P. REBE  
SURVEYOR

**WEBER COUNTY RECORDER**

RECORDED FOR: WEBER COUNTY

RECORDED BY: *John P. Rebe*

RECORDED ON: MAY 19 1995

RECORDED IN: BOOK 100 PAGE 100

**RECEIVED**

FEB 12 1997

Webber County Surveyor

40-57

001523