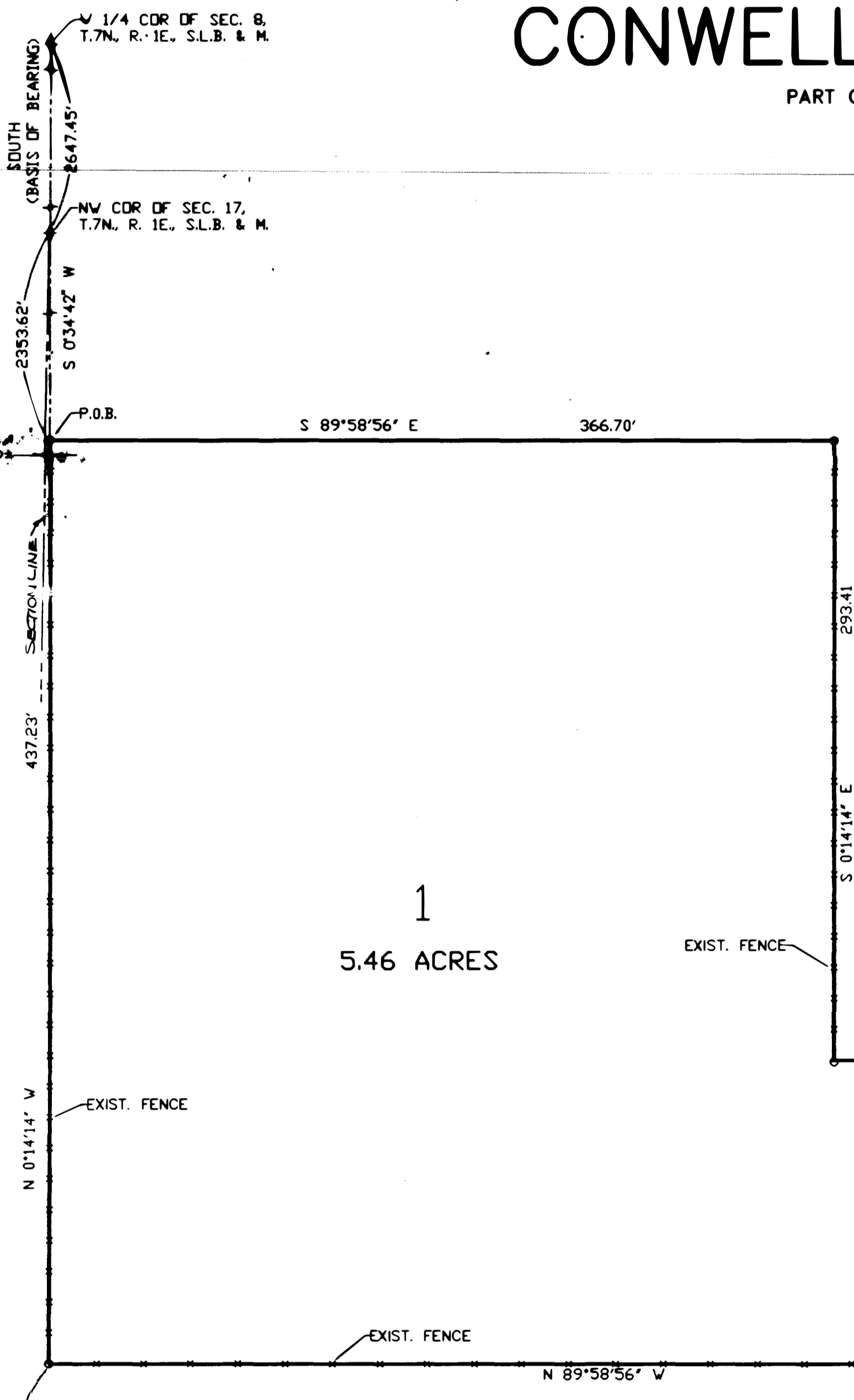


CONWELL ACRES SUBDIVISION

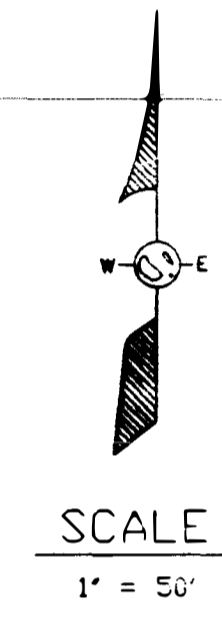
PART OF SEC 17, T.7N., R.1E., S.L.B. & M., U.S. SURVEY
WEBER COUNTY, UTAH
SEPT., 1993



BOUNDARY DESCRIPTION
 A PART OF SECTION 17, T. 7N., R. 1E., S.L.B. & M. DESCRIBED AS FOLLOWS:
 BEGINNING AT A POINT (BASIS OF BEARING SOUTH BETWEEN W 1/4 COR. & SW
 COR. OF SEC. 8, T. 7N., R. 1E.) S 0°34'42\"/>

NARRATIVE
 THE PURPOSE OF THIS PLAT IS TO SUBDIVIDE THIS PROPERTY
 INTO LOTS AND STREETS. THE BOUNDARY LINES WERE
 ESTABLISHED BY A SURVEY THAT WAS PERFORMED ON THE
 GROUND. MONUMENTS USED TO ESTABLISH THE BOUNDARY
 ARE SHOWN HEREON.

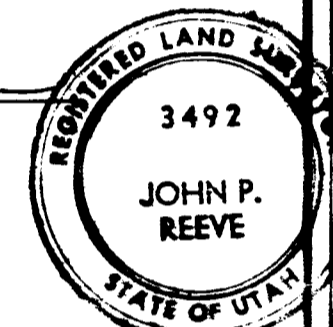
1
5.46 ACRES



SURVEYOR'S CERTIFICATE

I, JOHN P. REEVE, A REGISTERED PROFESSIONAL SURVEYOR
 IN THE STATE OF UTAH, DO HEREBY CERTIFY THAT THIS PLAT OF
 CONWELL ACRES, SUBDIVISION IN
 WEBER COUNTY, UTAH, HAS BEEN DRAWN CORRECTLY TO THE
 DESIGNATED SCALE AND IS A TRUE AND CORRECT REPRESENTATION OF
 THE HEREIN-DESCRIBED LANDS INCLUDED IN SAID SUBDIVISION, BASED
 UPON DATA COMPILED FROM RECORDS IN THE WEBER COUNTY
 RECORDER'S OFFICE AND FROM A SURVEY MADE BY ME ON THE GROUND.
 I FURTHER CERTIFY THAT THE REQUIREMENTS OF ALL APPLICABLE
 STATUTES AND ORDINANCES OF WEBER COUNTY CONCERNING SURVEY
 REQUIREMENTS REGARDING LOT MEASUREMENTS HAVE BEEN COMPLIED
 WITH, AND THE LOTS MEET THE SITE DEVELOPMENT STANDARDS FOR
 THE ZONE IN WHICH THEY ARE LOCATED.

SIGNED THIS 27th DAY OF August, 1993
 3492
 UTAH LICENSE NUMBER SIGNATURE



OWNER'S DEDICATION AND CERTIFICATION

WE, THE UNDERSIGNED, OWNERS OF THE HEREIN-DESCRIBED TRACT OF
 LAND, HEREBY SET APART AND SUBDIVIDE THE SAME INTO LOTS AND
 STREETS, AS SHOWN ON THIS PLAT, AND NAME SAID TRACT CONWELL
 ACRES SUBDIVISION, AND HEREBY DEDICATE, GRANT, AND CONVEY TO
 WEBER COUNTY, UTAH, ALL THOSE PARTS OR PORTIONS OF SAID
 TRACT OF LAND DESIGNATED AS STREETS, THE SAME TO BE USED AS
 PUBLIC THOROUGHFARES FOREVER, AND ALSO DEDICATE TO WEBER
 COUNTY THOSE CERTAIN STRIPS AS EASEMENTS FOR PUBLIC UTIL-
 ITY AND DRAINAGE PURPOSES, AS SHOWN HEREON, THE SAME TO BE
 USED FOR THE INSTALLATION, MAINTENANCE, AND OPERATION OF PUBLIC
 UTILITY SERVICE LINES AND DRAINAGE, AS MAY BE AUTHORIZED BY
 ORDINANCES.

THE UNDERSIGNED HEREBY CERTIFY THAT THIS SUBDIVISION HAS MET
 ALL THE REQUIREMENTS OF _____ ORDINANCES.

SIGNED THIS 27th DAY OF August, 1993
 Norma E. Walden
 Thane N. Walden
 Owners

ACKNOWLEDGEMENT

STATE OF UTAH) ss.
 COUNTY OF _____)
 ON THE 27th DAY OF August, 1993, PERSONALLY APPEARED
 BEFORE ME THE UNDERSIGNED NOTARY PUBLIC, Norma E. Walden
 (AND Thane N. Walden) SIGNERS OF THE ABOVE OWNER'S DEDICATION
 AND CERTIFICATION, WHO BEING ME DULY SWORN, DID ACKNOWLEDGE TO
 ME _____ SIGNED IT FREELY, VOLUNTARILY, AND FOR THE PURPOSES
 THEREIN MENTIONED.

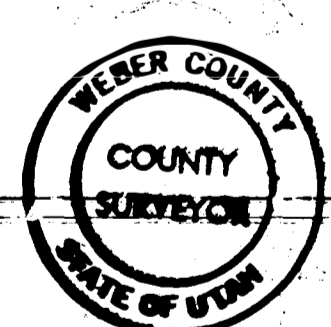
COMMISSION EXPIRES _____ NOTARY PUBLIC
 David Halley

ACKNOWLEDGEMENT

STATE OF UTAH) ss.
 COUNTY OF _____)
 ON THE _____ DAY OF _____, 19____, PERSONALLY APPEARED
 BEFORE ME _____ AND _____ OF SAID CORPORATION AND THAT THEY
 SIGNED THE ABOVE OWNER'S DEDICATION AND CERTIFICATION FREELY,
 VOLUNTARILY, AND IN BEHALF OF SAID CORPORATION FOR THE PURPOSES
 THEREIN MENTIONED.

COMMISSION EXPIRES _____ NOTARY PUBLIC

WEBER COUNTY ENGINEER



I HEREBY CERTIFY THAT THE REQUIREMENTS OF ALL APPLICABLE STATUTES AND
 ORDINANCES PREREQUISITE TO APPROVAL BY THE ENGINEER OF THE FOREGOING
 PLAT AND DEDICATIONS HAVE BEEN COMPLIED WITH, DATED THIS 30th DAY OF
 August, 1993.

REEVE & REEVE, INC.
 CIVIL AND ENVIRONMENTAL ENGINEERING
 LAND PLANNING AND SITE DESIGN
 LAND SURVEYING
 OGDEN, UTAH

WEBER COUNTY PLANNING COMMISSION

APPROVED BY THE WEBER COUNTY PLANNING COMMISSION
 ON THE 27th DAY OF August, 1993.
 David Baker
 CHAIRMAN

WEBER COUNTY SURVEYOR

I HEREBY CERTIFY THAT I HAVE CAREFULLY INVESTIGATED THE LINES
 OF SURVEY OF THE FOREGOING PLAT AND LEGAL DESCRIPTION OF THE
 LANDS EMBRACED THEREIN AND FIND THEM TO BE CORRECT AND TO
 AGREE WITH THE LINES AND MONUMENTS ON RECORD IN THIS OFFICE
 IN COMPLIANCE WITH THE REQUIREMENTS OF WEBER COUNTY ORDINANCES
 SIGNED THIS 30th DAY OF August, 1993.

WEBER COUNTY ACCEPTANCE

THIS IS TO CERTIFY THAT THIS PLAT AND DEDICATION OF THIS
 PLAT WERE DULY APPROVED AND ACCEPTED BY THE COMMISSION
 OF WEBER COUNTY, UTAH, THIS _____ DAY OF _____
 19____.
 ATTEST:
 TITLE:

WEBER COUNTY ATTORNEY

I HEREBY CERTIFY THAT THE REQUIREMENTS OF ALL APPLICABLE STATUTES AND
 ORDINANCES PREREQUISITE TO APPROVAL BY THE ATTORNEY OF THE FOREGOING
 PLAT AND DEDICATIONS HAVE BEEN COMPLIED WITH, DATED THIS _____ DAY OF _____
 19____.

WEBER COUNTY RECORDER

ENTRY NO. 229131, FEE PAID \$30.00
 FILED FOR RECORD AND RECORDED
 AUG. 30, 1993 AT 11:02 AM
 IN BOOK _____ OF THE OFFICIAL
 RECORDS, PAGE 37
 RECORDED FOR:
 Mary Connell
 WEBER COUNTY RECORDER
 BY: Quinn Swales DEPUTY

RECEIVED

FEB 12 1997

Webber County Surveyor

RECEIVED

FEB 12 1997

Webber County Surveyor

DRAWING NUMBER
001530
PLAT FIELD COPY/REVISIONS - BEAR, CALIFORNIA
REVISION BY NUMBER/DATE

DRAWING NUMBER
001530
PLAT FIELD COPY/REVISIONS - BEAR, CALIFORNIA
REVISION BY NUMBER/DATE

DRAWING NUMBER
001530
PLAT FIELD COPY/REVISIONS - BEAR, CALIFORNIA
REVISION BY NUMBER/DATE

DRAWING NUMBER
001530
PLAT FIELD COPY/REVISIONS - BEAR, CALIFORNIA
REVISION BY NUMBER/DATE