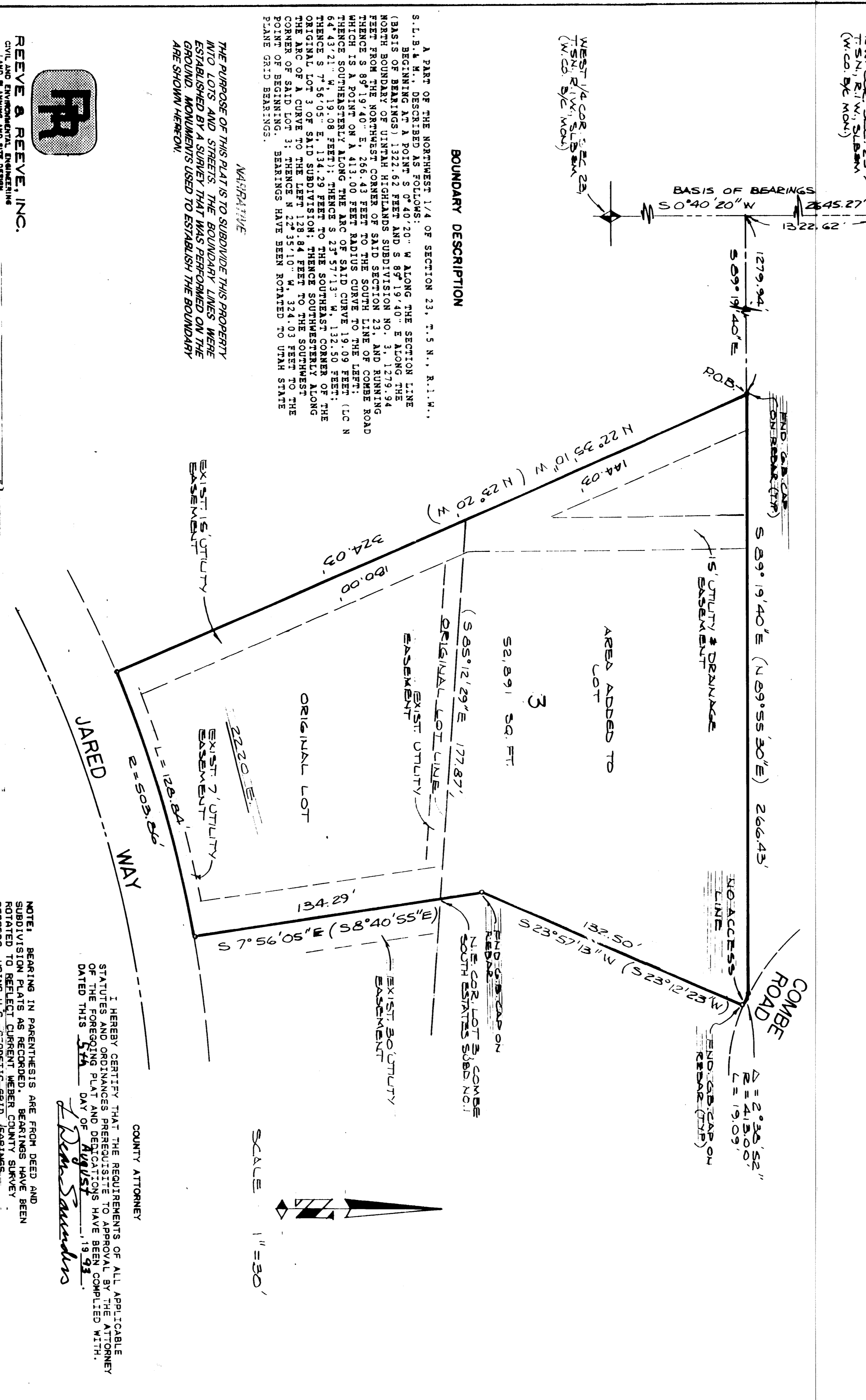


12-96

# AMENDED PLAT OF LOT 3, COMBE SOUTH ESTATES SUBD. NO. 1 WEBER COUNTY, UTAH



### BOUNDARY DESCRIPTION

A PART OF THE NORTHWEST 1/4 OF SECTION 23, T. 5 S. R. 1. E., N. 1. H., S. 1. S. BEGINNING AT POINT S OF 40° 30' 00\"/>

THE PURPOSE OF THIS PLAT IS TO SUBDIVIDE THIS PROPERTY INTO LOTS AND TO SHOW THE BOUNDARIES, LINES, AND CORNERS OF SAID LOTS AND TO ESTABLISH THE BOUNDARY MONUMENTS USED TO ESTABLISH THE BOUNDARY ARE SHOWN HEREON.

### NOTARIAL

REVEE & REVEE, INC.  
PLANNING AND SURVEYING  
100 S. MAIN ST., SUITE 200  
CANYONVILLE, UTAH 84301



WEBER COUNTY PLANNING COMMISSION  
APPROVED BY THE WEBER COUNTY PLANNING COMMISSION ON THE 21st DAY OF JULY 1993.

WEBER COUNTY SURVEYOR  
I HEREBY CERTIFY THAT I HAVE CAREFULLY INVESTIGATED THE LINES OF SURVEY OF THE FOREGOING PLAT AND LEGAL DESCRIPTION OF THE LANDS EMPLOYED THEREIN AND FIND THEM TO BE CORRECT AND TO AGREE WITH THE LINES AND MONUMENTS ON RECORD IN THE PUBLIC RECORDS OF SAID COUNTY.

WEBER COUNTY ACCEPTANCE  
THIS IS TO CERTIFY THAT THIS PLAT AND DESCRIPTION OF THIS PLAT HAVE BEEN REVIEWED AND ACCEPTED BY THE COMMISSIONERS OF WEBER COUNTY UTAH, THIS 21st DAY OF JULY 1993.

WEBER COUNTY ENGINEER  
I HEREBY CERTIFY THAT THE REQUIREMENTS OF U.S. SURVEYING STANDARDS AND CODES HAVE BEEN MET AND THAT THE PLAT IS CORRECT AND ACCURATE.

SCALE 1" = 30'

COUNTY ATTORNEY  
I HEREBY CERTIFY THAT THE REQUIREMENTS OF ALL APPLICABLE STATUTES AND ORDINANCES PREEXISTING TO APPROVAL BY THE ATTORNEY OF THE FOREGOING PLAT AND ORDINANCES HAVE BEEN COMPLIED WITH.

NOTE: BEARING IN PARENTHESES ARE FROM DEED AND SUBDIVISION RECORDS. BEARINGS FROM WEBER COUNTY SURVEY RECORDS, USING U.S. GEODETIC GRID BEARINGS.

### SURVEYOR'S CERTIFICATE

I, JOHN R. REVEE, a duly licensed professional engineer in the State of Utah, do hereby certify that the foregoing plat and description of the land therein contained were prepared by me or under my direct supervision and that I am a duly licensed professional engineer in the State of Utah.

### OWNER'S DEDICATION AND CERTIFICATION

WE, THE UNDERSIGNED, OWNERS OF THE SEVERAL PARCELS OF LAND SHOWN ON THE FOREGOING PLAT, do hereby certify that the same are being dedicated to the public use of the State of Utah and that the same are being dedicated to the public use of the State of Utah and that the same are being dedicated to the public use of the State of Utah.

### ACKNOWLEDGEMENT

ON THE 21st DAY OF JULY 1993, at the County of Weber, State of Utah, the following persons appeared before me, a Notary Public, and acknowledged to me that they executed the foregoing plat and description of the land therein contained for the purposes and intentions therein mentioned.

### ACKNOWLEDGEMENT

ON THE 21st DAY OF JULY 1993, at the County of Weber, State of Utah, the following persons appeared before me, a Notary Public, and acknowledged to me that they executed the foregoing plat and description of the land therein contained for the purposes and intentions therein mentioned.

RECEIVED  
FEB 12 1997  
Webber County Surveyor

RECEIVED  
FEB 12 1997  
Webber County Surveyor