

4-16

# AMENDED CLOVER RIDGE—PHASE 3

PART OF THE NE 1/4 OF SEC. 21, T. 34N., R. 2W., S.1.B. & M., U.S. SURVEY  
ROY CITY, WEBER COUNTY, UTAH  
NOVEMBER, 1993

**BOUNDARY DESCRIPTION**

A part of the NE 1/4 of Sec. 21, T. 34N., R. 2W., S.1.B. & M. described as follows: 1/4 of E.C. 21, T. 34N., R. 2W., S.1.B. & M. and beginning at a point on the south line of 5700 South Street, said 1/4 section (as indicated) to a western projection of the south line of said 5700 South Street and N 89°43'51" W and section and running thence S 0°16'09" W 145.74' to a point on the north line of 3600 West Street, thence S 0°16'09" W 145.74' to a point on the north line of 5700 South Street, thence S 89°43'51" E 102.92' to the point of beginning.

- ① A 417°34'35" R 30.00' T 11.88' LC 212°11' S 205°92'57" W
- ② A 455°14'55" R 50.00' T 21.15' LC 38°56' S 184°43'1" W
- ③ A 417°34'35" R 30.00' T 11.88' LC 212°11' S 205°92'57" W
- ④ A 455°14'55" R 50.00' T 21.15' LC 38°56' S 184°43'1" W
- ⑤ A 455°14'55" R 50.00' T 21.15' LC 38°56' S 184°43'1" W
- ⑥ A 417°34'35" R 30.00' T 11.88' LC 212°11' S 205°92'57" W
- ⑦ A 455°14'55" R 50.00' T 21.15' LC 38°56' S 184°43'1" W
- ⑧ A 417°34'35" R 30.00' T 11.88' LC 212°11' S 205°92'57" W
- ⑨ A 455°14'55" R 50.00' T 21.15' LC 38°56' S 184°43'1" W
- ⑩ A 417°34'35" R 30.00' T 11.88' LC 212°11' S 205°92'57" W
- ⑪ A 455°14'55" R 50.00' T 21.15' LC 38°56' S 184°43'1" W
- ⑫ A 417°34'35" R 30.00' T 11.88' LC 212°11' S 205°92'57" W
- ⑬ A 455°14'55" R 50.00' T 21.15' LC 38°56' S 184°43'1" W
- ⑭ A 417°34'35" R 30.00' T 11.88' LC 212°11' S 205°92'57" W
- ⑮ A 455°14'55" R 50.00' T 21.15' LC 38°56' S 184°43'1" W
- ⑯ A 417°34'35" R 30.00' T 11.88' LC 212°11' S 205°92'57" W
- ⑰ A 455°14'55" R 50.00' T 21.15' LC 38°56' S 184°43'1" W
- ⑱ A 417°34'35" R 30.00' T 11.88' LC 212°11' S 205°92'57" W
- ⑲ A 455°14'55" R 50.00' T 21.15' LC 38°56' S 184°43'1" W
- ⑳ A 417°34'35" R 30.00' T 11.88' LC 212°11' S 205°92'57" W
- ㉑ A 455°14'55" R 50.00' T 21.15' LC 38°56' S 184°43'1" W
- ㉒ A 417°34'35" R 30.00' T 11.88' LC 212°11' S 205°92'57" W
- ㉓ A 455°14'55" R 50.00' T 21.15' LC 38°56' S 184°43'1" W
- ㉔ A 417°34'35" R 30.00' T 11.88' LC 212°11' S 205°92'57" W
- ㉕ A 455°14'55" R 50.00' T 21.15' LC 38°56' S 184°43'1" W
- ㉖ A 417°34'35" R 30.00' T 11.88' LC 212°11' S 205°92'57" W
- ㉗ A 455°14'55" R 50.00' T 21.15' LC 38°56' S 184°43'1" W
- ㉘ A 417°34'35" R 30.00' T 11.88' LC 212°11' S 205°92'57" W
- ㉙ A 455°14'55" R 50.00' T 21.15' LC 38°56' S 184°43'1" W
- ㉚ A 417°34'35" R 30.00' T 11.88' LC 212°11' S 205°92'57" W
- ㉛ A 455°14'55" R 50.00' T 21.15' LC 38°56' S 184°43'1" W
- ㉜ A 417°34'35" R 30.00' T 11.88' LC 212°11' S 205°92'57" W
- ㉝ A 455°14'55" R 50.00' T 21.15' LC 38°56' S 184°43'1" W
- ㉞ A 417°34'35" R 30.00' T 11.88' LC 212°11' S 205°92'57" W
- ㉟ A 455°14'55" R 50.00' T 21.15' LC 38°56' S 184°43'1" W
- ㊱ A 417°34'35" R 30.00' T 11.88' LC 212°11' S 205°92'57" W
- ㊲ A 455°14'55" R 50.00' T 21.15' LC 38°56' S 184°43'1" W
- ㊳ A 417°34'35" R 30.00' T 11.88' LC 212°11' S 205°92'57" W
- ㊴ A 455°14'55" R 50.00' T 21.15' LC 38°56' S 184°43'1" W
- ㊵ A 417°34'35" R 30.00' T 11.88' LC 212°11' S 205°92'57" W
- ㊶ A 455°14'55" R 50.00' T 21.15' LC 38°56' S 184°43'1" W
- ㊷ A 417°34'35" R 30.00' T 11.88' LC 212°11' S 205°92'57" W
- ㊸ A 455°14'55" R 50.00' T 21.15' LC 38°56' S 184°43'1" W
- ㊹ A 417°34'35" R 30.00' T 11.88' LC 212°11' S 205°92'57" W
- ㊺ A 455°14'55" R 50.00' T 21.15' LC 38°56' S 184°43'1" W

NOTE: SEWER IN THIS SUBDIVISION WILL BE INSTALLED AT THE OPTION OF THE SUBDIVISION OWNER. REFER TO IMPROVEMENT PLANS FOR DEPTH OF SEWER.

NOTE: UTILITY EASEMENTS SHOWN ARE 10 FEET WIDE FOR UTILITIES AND DRAINAGE UNLESS OTHERWISE SHOWN.

—S— EXISTING NORTH DAVIS SEWER DISTRICT 17 SEWER LINE.

• INDICATES SURVEY MONUMENT TO BE SET.

**REEVE & REEVE, INC.**  
CIVIL AND ENVIRONMENTAL ENGINEERING  
LAND PLANNING AND SITE DESIGN  
DORRIN, UTAH

ROY CITY PLANNING COMMISSION  
APPROVED BY THE ROY CITY PLANNING COMMISSION  
ON THE 11 DAY OF MAY 1993

*R.S.*  
CHAIRMAN

ROY CITY ENGINEER  
I HEREBY CERTIFY THAT I HAVE CAREFULLY INVESTIGATED THE LINKS OF SURVEY OF THE FOREGOING PLAN AND LEGAL RECORDS OF THE LANDS COMPASSED THEREIN AND FIND THEM TO BE CORRECT AND TO COMPLY WITH THE REQUIREMENTS OF THE CITY OF ROY CITY. I HAVE STORED THIS PLAN IN MY OFFICE.

*[Signature]*  
ROY CITY ENGINEER

ROY CITY ACCEPTANCE  
THIS IS TO CERTIFY THAT THE REQUIREMENTS OF THIS PLAN HAVE BEEN MET AND THAT THE PLAN IS IN ACCORDANCE WITH THE CITY OF ROY CITY. I HAVE STORED THIS PLAN IN MY OFFICE.

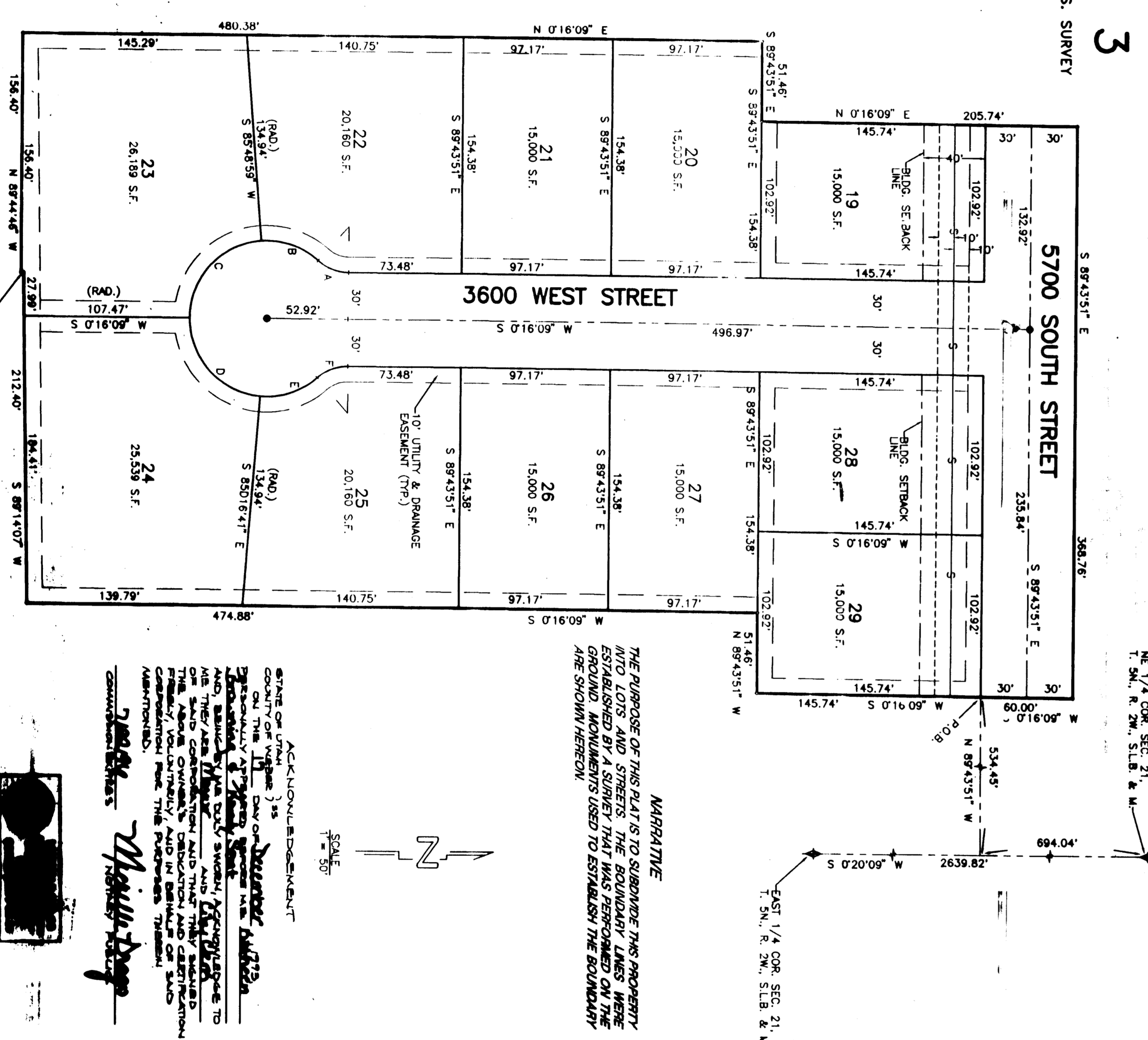
*[Signature]*  
ROY CITY ATTORNEY

ROY CITY ATTORNEY  
I HEREBY CERTIFY THAT THE REQUIREMENTS OF ALL CITY ORDINANCES AND STATUTES HAVE BEEN COMPLETED WITH THIS PLAN AND THAT THE PLAN IS IN ACCORDANCE WITH THE CITY OF ROY CITY. I HAVE STORED THIS PLAN IN MY OFFICE.

*[Signature]*  
ROY CITY ATTORNEY

WEBER COUNTY RECORDER  
I HEREBY CERTIFY THAT THE REQUIREMENTS OF ALL CITY ORDINANCES AND STATUTES HAVE BEEN COMPLETED WITH THIS PLAN AND THAT THE PLAN IS IN ACCORDANCE WITH THE CITY OF ROY CITY. I HAVE STORED THIS PLAN IN MY OFFICE.

*[Signature]*  
WEBER COUNTY RECORDER



**MARRIAGE**

THE PURPOSE OF THIS PLAN IS TO SUBDIVIDE THIS PROPERTY INTO LOTS AND STREETS. THE BOUNDARY LINES WERE ESTABLISHED BY A SURVEY THAT WAS PERFORMED ON THE GROUNDS WHEREAS THE LOTS AND STREETS SHOWN ON THIS PLAN ARE THE SAME AS SHOWN ON THE ORIGINAL SURVEY.

**ACKNOWLEDGEMENT**

STATE OF UTAH, 24 DAY OF MAY, 1993

COUNTY OF WEBER, 24 DAY OF MAY, 1993

*[Signatures]*  
WEBER COUNTY RECORDER

**SURVEYOR'S CERTIFICATE**

I, JOHN P. REEVE, A REGISTERED PROFESSIONAL SURVEYOR IN THE STATE OF UTAH, DO HEREBY CERTIFY THAT THIS PLAN OF AMENDED CLOVER RIDGE—PHASE 3 WAS SUBMITTED TO ME BY THE SUBDIVISION OWNER AND THAT I HAVE REVIEWED THE SAME AND FOUND IT TO BE CORRECT AND TO COMPLY WITH THE REQUIREMENTS OF THE CITY OF ROY CITY. I HAVE STORED THIS PLAN IN MY OFFICE.

*[Signature]*  
JOHN P. REEVE  
SURVEYOR

**OWNERS' DEDICATION AND CERTIFICATION**

WE, THE UNDERSIGNED OWNERS OF THE HERETO-FORERESTATED TRACT OF LAND, HEREBY SET APART AND SUBDIVIDE THE SAME INTO LOTS AND STREETS, AS SHOWN ON THIS PLAN AND HAVE SAID TRACT, LOTS, AND STREETS, AS SHOWN ON THIS PLAN, TO BE USED AS A TRACT OF LAND AND DESIGNATED AS STREETS, THE SAME TO BE USED AS PUBLIC THROUGHS, CERTAIN STRIPS AS EASEMENTS FOR PUBLIC UTILITIES AND DRAINAGE PURPOSES, AS SHOWN HEREON, THE SAME TO BE UTILIZED BY THE CITY OF ROY CITY, UTAH, AND WE HEREBY CERTIFY THAT WE HAVE COMPLETED ALL THE REQUIREMENTS OF THE CITY OF ROY CITY AND WE HEREBY CERTIFY THAT THIS SUBDIVISION HAS MET ALL THE REQUIREMENTS OF THE CITY OF ROY CITY.

*[Signatures]*  
WEBER COUNTY RECORDER

**ACKNOWLEDGEMENT**

STATE OF UTAH, 24 DAY OF MAY, 1993

COUNTY OF WEBER, 24 DAY OF MAY, 1993

*[Signatures]*  
WEBER COUNTY RECORDER

**ACKNOWLEDGEMENT**

STATE OF UTAH, 24 DAY OF MAY, 1993

COUNTY OF WEBER, 24 DAY OF MAY, 1993

*[Signatures]*  
WEBER COUNTY RECORDER

RECEIVED  
FEB 12 1997  
Weber County Recorder