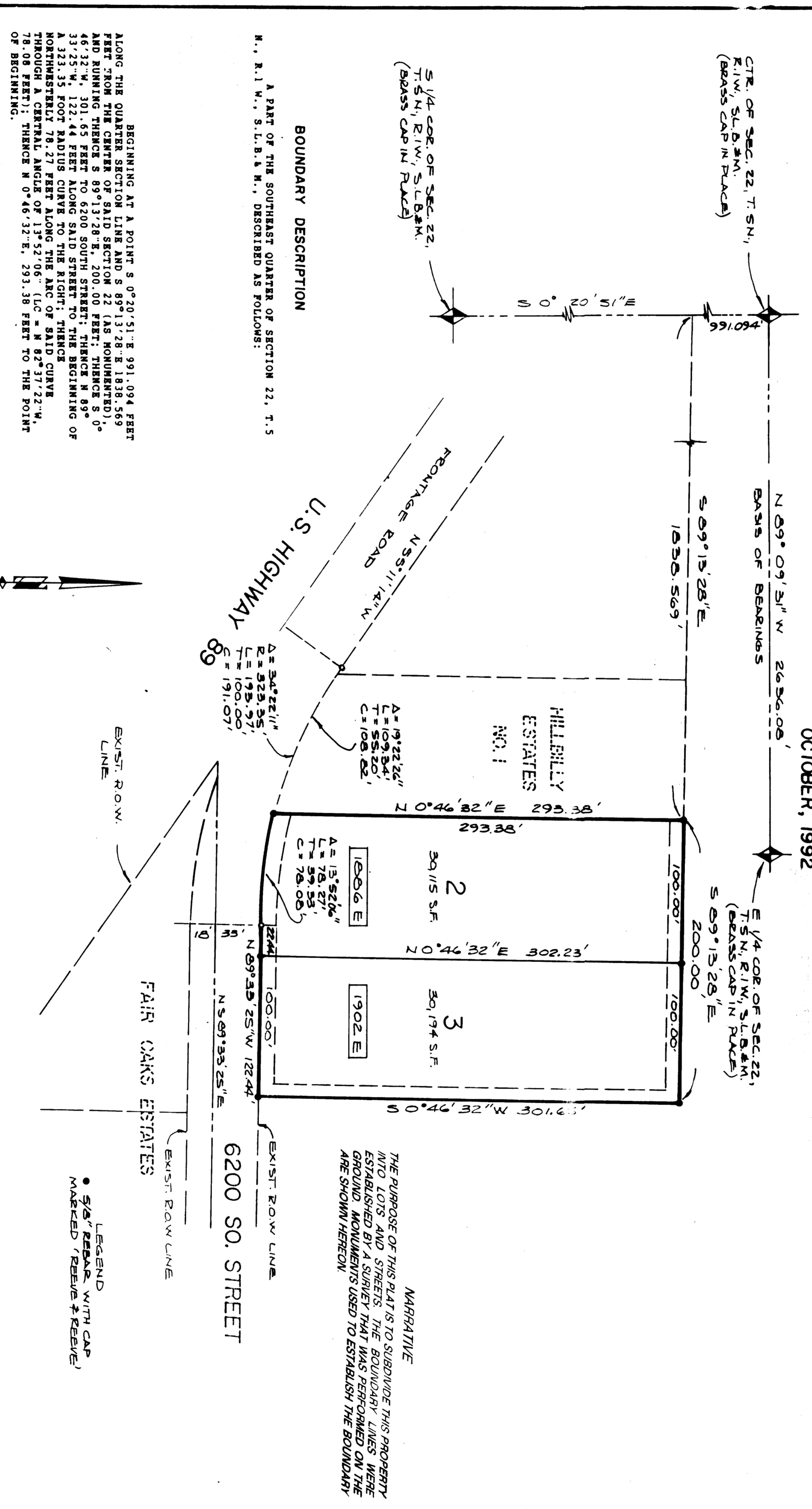


01-92

**HILLBILLY ESTATES NO. 2**  
A PART OF THE SE 1/4 OF SEC. 22, T.5N., R.1W., S.L.B.8M., U.S. SURVEY  
WEBER COUNTY, UTAH  
OCTOBER, 1992



**REEVE & REEVE, INC.**  
CIVIL AND ENVIRONMENTAL ENGINEERING  
OGDEN, UTAH

APPROVED BY THE WEBER COUNTY PLANNING COMMISSION  
ON THE 19 DAY OF SEPTEMBER, 1992.  
*[Signature]*  
CHAIRMAN

WEBER COUNTY SURVEYOR  
I HEREBY CERTIFY THAT I HAVE CAREFULLY INVESTIGATED THE LINES OF THE FOREGOING PLAT AND LEGAL DESCRIPTION OF THE LANDS EMPRACED THEREIN IN COMPLIANCE WITH THE REQUIREMENTS OF WEBER COUNTY ORDINANCE NO. 19-31 SIGNED THIS 15 DAY OF SEPTEMBER, 1992.  
*[Signature]*

WEBER COUNTY ACCEPTANCE  
THIS IS TO CERTIFY THAT THIS PLAT AND DESCRIPTION OF THIS PLAT HAVE BEEN APPROVED AND ACCEPTED BY THE COMMISSION.  
ATTEST:  
TITLE: \_\_\_\_\_

WEBER COUNTY ENGINEER  
I HEREBY CERTIFY THAT THE REQUIREMENTS OF ALL APPLICABLE STATUTES AND ORDINANCES PRESENTLY IN EFFECT HAVE BEEN COMPLIED WITH. DATED THIS 15 DAY OF SEPTEMBER, 1992.  
*[Signature]*

WEBER COUNTY ATTORNEY  
I HEREBY CERTIFY THAT THE REQUIREMENTS OF ALL APPLICABLE STATUTES AND ORDINANCES PRESENTLY IN EFFECT HAVE BEEN COMPLIED WITH.  
DATED THIS 15 DAY OF SEPTEMBER, 1992.

**MARRIAGE**  
THE PURPOSE OF THIS PLAT IS TO SUBDIVIDE THE PROPERTY INTO LOTS AND STREETS. THE BOUNDARY LINES WERE ESTABLISHED BY MEASUREMENTS MADE ON THE GROUND AND SHOWN HEREON.

**SURVEYOR'S CERTIFICATE**  
I, JOHN F. REEVE, A REGISTERED PROFESSIONAL SURVEYOR IN THE STATE OF UTAH, DO HEREBY CERTIFY THAT THIS PLAT OF HILLBILLY ESTATES NO. 2, WEBER COUNTY, UTAH, WAS BEING MADE CORRECTLY TO THE BEST OF MY KNOWLEDGE AND BELIEF AT THE TIME AND IN ACCORDANCE WITH THE REQUIREMENTS OF THE UTAH SURVEYING ACT AND THE REQUIREMENTS OF THE BOARD OF SURVEYING AND MAPPING ENGINEERS OF THE STATE OF UTAH. I FURTHER CERTIFY THAT THE REQUIREMENTS OF ALL APPLICABLE STATUTES AND ORDINANCES PRESENTLY IN EFFECT HAVE BEEN COMPLIED WITH, AND THE LOTS MEET THE SITE DEVELOPMENT STANDARDS FOR THE ZONE IN WHICH THEY ARE LOCATED.  
SIGNED THIS 20TH DAY OF SEPTEMBER, 1992.  
JOHN F. REEVE  
3472  
UTAH LICENSE NUMBER  
REGISTERED PROFESSIONAL SURVEYOR  
STATE OF UTAH

**OWNER'S DEDICATION AND CERTIFICATION**  
WE, THE UNDERSIGNED, OWNERS OF THE HEREBY-DESCRIBED TRACT OF LAND, HEREBY SET APART AND SUBDIVIDE THE SAME INTO LOTS AND STREETS, AS SHOWN ON THIS PLAT, AND HAVE SAID THAT HILLBILLY ESTATES NO. 2, WEBER COUNTY, UTAH, ALL THOSE PARTS OR PORTIONS OF SAID TRACT OF LAND WHICH ARE NOT SHOWN ON THIS PLAT TO BE USED AS PUBLIC THROUGHWAYS, EGRESS, AND UTILITIES, AND WE HEREBY DEDICATE AND CONVEY TO THE PUBLIC THE UTILITY AND DRAINAGE PURPOSES, AS SHOWN HEREON, THE SAME TO BE USED FOR THE INSTALLATION, MAINTENANCE, AND OPERATION OF PUBLIC UTILITY SERVICE LINES AND DRAINAGE, AS MAY BE AUTHORIZED BY WEBER COUNTY.  
THE UNDERSIGNED HEREBY CERTIFY THAT THIS SUBDIVISION HAS MET ALL THE REQUIREMENTS OF WEBER COUNTY.  
SIGNED THIS 21 DAY OF OCTOBER, 1992.  
*[Signatures]*  
ACKNOWLEDGEMENT  
STATE OF UTAH } ss.  
COUNTY OF WEBER } ss.  
APPEARED BEFORE ME, THE UNDERSIGNED NOTARY PUBLIC, ON THE 21st DAY OF OCTOBER, 1992, PERSONALLY (AND) AND CERTIFICATION, WHO, BEING BY THE ABOVE OWNERS (OR AGENTS) OF SAID CORPORATION, VOLUNTARILY, AND IN FULL KNOWLEDGE OF THE CONTENTS AND EFFECTS OF THE FOREGOING INSTRUMENT, SIGNED IT FREELY, VOLUNTARILY, AND FOR THE PURPOSES HALF OF SAID CORPORATION FOR THE PURPOSES THEREIN MENTIONED.  
NOTARY PUBLIC  
COMMISSION EXPIRES \_\_\_\_\_

WEBER COUNTY RECORDER  
ENTRY NO. 1220228 - FEE AND \$2.00 - FILED FOR RECORD AND RETURNED JUN 20, 1993. AT REC'D IN ROOM 202 OF OFFICIAL RECORDS, PINE BLVD., OGDEN, UTAH 84401.  
DOUG GARDNER  
WEBER COUNTY RECORDER  
By *[Signature]*  
CLERK

RECEIVED  
SEP 18 1992  
Weber County Surveyor