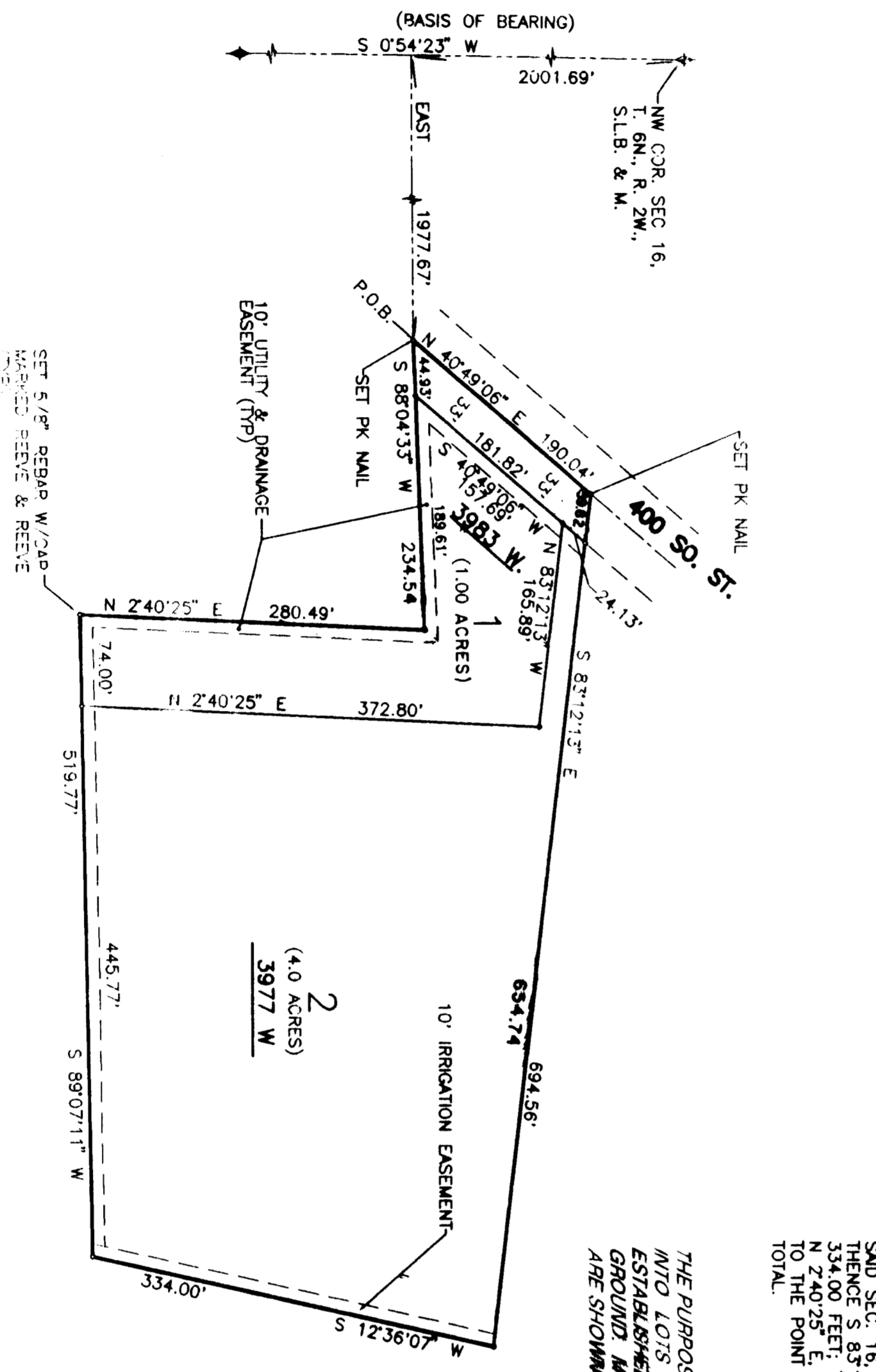
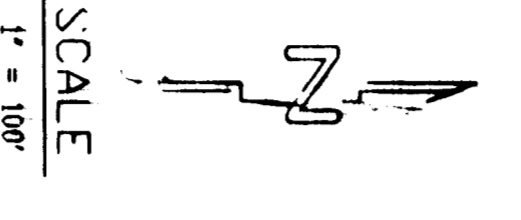


49 - 96

HODSON ACRES SUBDIVISION

PART OF THE N 1/2 OF SEC. 16, T. 6N., R. 2W., S.L.B. & M., U.S. SURVEY
WEBER COUNTY, UTAH
OCTOBER, 1993



BOUNDARY DESCRIPTION

A PART OF THE N 1/2 OF SEC. 16, T. 6N., R. 2W., S.L.B. & M. DESCRIBED AS BEING AT A POINT 5 054237 W ALONG SEC. LINE (BASIS OF BEARING) 2001.69 FEET AND EAST 1977.67 FEET FROM THE NW COR. OF SECTION 16, T. 6N., R. 2W., S.L.B. & M. BEARING S 87°12' E, 894.48 FEET; THENCE S 12°40'07" W, 334.00 FEET; THENCE S 89°07'11" W, 519.77 FEET; THENCE S 12°40'07" W, 334.00 FEET TO THE POINT OF BEGINNING. HODSON ACRES SUBD. CONTAINS 5.14 ACRES TOTAL.

THE PURPOSE OF THIS SURVEY IS TO ESTABLISH THE BOUNDARIES AND AVOID LOTS AND STREETS THAT WERE ESTABLISHED BY A SURVEY THAT WAS PERFORMED ON THE HODSON ACRES SUBDIVISION AND USED TO ESTABLISH THE BOUNDARIES OF THE SHOW HEREON.

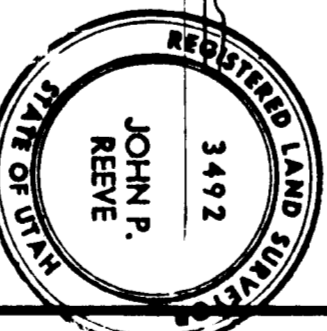
OWNER'S DEDICATION AND CERTIFICATION

WE, THE UNDERSIGNED OWNERS OF THE HEREBY DESCRIBED TRACT OF LAND HEREBY SET APART AND SUBDIVIDE THE SAME INTO LOTS AND ACREAGE SUBDIVISION, AND HEREBY DEDICATE, GRANT, AND CONVEY TO WEBER COUNTY, UTAH, ALL THESE PARTS OR PORTIONS OF SAID PUBLIC HIGHWAYS, STREETS, AND ALSO DEDICATE TO WEBER COUNTY, UTAH, AND HOLD THESE CERTAIN STRIPS AS EASEMENTS FOR PUBLIC UTILITY AND SERVICE LINES AND DRAINAGE, AS MAY BE AUTHORIZED BY THE UNDERGROUND SERVICE LINES ACT, AS AMENDED.

THE UNDERSIGNED HEREBY CERTIFY THAT THIS SUBDIVISION WAS SET APART AND SUBDIVIDED FOR THE PURPOSES OF THE FOREGOING.

SIGNED THIS 12th DAY OF OCTOBER, 1993.

Richard K. Hodge
Richard K. Hodge



SURVEYOR'S CERTIFICATE

I, JOHN P. REEVE, A REGISTERED PROFESSIONAL SURVEYOR IN THE STATE OF UTAH, DO HEREBY CERTIFY THAT THIS PLAT OF THE HODSON ACRES SUBDIVISION, UTAH, HAS BEEN DRAWN CORRECTLY TO THE BEST OF MY KNOWLEDGE AND BELIEF, AND IS A TRUE AND CORRECT REPRESENTATION OF THE HEREBY DESCRIBED LANDS. I HAVE REVIEWED THE SURVEY INSTRUMENTS AND RECORDS OF THE SURVEY AND THE RECORDS OF THE SURVEYOR'S OFFICE AND FROM A SURVEY MADE BY ME ON THE GROUND I FURTHER CERTIFY THAT THE REQUIREMENTS OF THE SURVEY ACT, UTAH, AND THE REQUIREMENTS OF THE SURVEY ACT, UTAH, HAVE BEEN COMPLIED WITH, AND THE LOTS MEET THE SITE DEVELOPMENT STANDARDS FOR THE ZONE IN WHICH THEY ARE LOCATED.

SIGNED THIS 12th DAY OF OCTOBER, 1993.

3492
UTAH LICENSE NUMBER

John P. Reeve
SIGNATURE

ACKNOWLEDGEMENT

STATE OF UTAH, ss.
COUNTY OF WEBER, ss.
ON THE 12th DAY OF OCTOBER, 1993, PERSONALLY APPEARED *Richard K. Hodge* AND *Richard K. Hodge* (AND OTHERS), THE SIGNERS OF THE ABOVE OWNERS' DEDICATION AND CERTIFICATION, WHOSE NAMES AND ADDRESSES ARE SET FORTH HEREIN, AND THEY STOKED IT FREELY, VOLUNTARILY, AND FOR THE PURPOSES HEREIN MENTIONED.

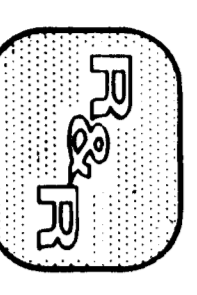
ACKNOWLEDGEMENT

STATE OF UTAH, ss.
COUNTY OF WEBER, ss.
ON THE 12th DAY OF OCTOBER, 1993, PERSONALLY APPEARED *John P. Reeve* (AND OTHERS), THE SIGNERS OF THE FOREGOING, WHOSE NAMES AND ADDRESSES ARE SET FORTH HEREIN, AND THEY STOKED IT FREELY, VOLUNTARILY, AND FOR THE PURPOSES HEREIN MENTIONED.

ACKNOWLEDGEMENT

STATE OF UTAH, ss.
COUNTY OF WEBER, ss.
ON THE 12th DAY OF OCTOBER, 1993, PERSONALLY APPEARED *John P. Reeve* (AND OTHERS), THE SIGNERS OF THE FOREGOING, WHOSE NAMES AND ADDRESSES ARE SET FORTH HEREIN, AND THEY STOKED IT FREELY, VOLUNTARILY, AND FOR THE PURPOSES HEREIN MENTIONED.

REEVE & REEVE, INC.
CIVIL AND ENVIRONMENTAL ENGINEERING
LAND PLANNING AND SITE DESIGN
BOONE, UTAH



WEBER COUNTY PLANNING COMMISSION

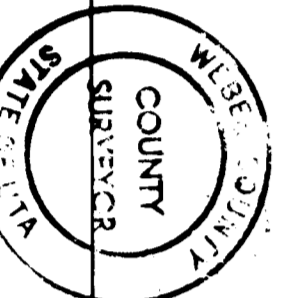
APPROVED BY: *[Signature]*
DATE OF: *[Signature]*

WEBER COUNTY SURVEYOR

I HEREBY CERTIFY THAT I HAVE CAREFULLY INVESTIGATED THE LINES AND MONUMENTS OF THIS SUBDIVISION AND FIND THEM TO BE CORRECT AND TO AGREE WITH THE LINES AND MONUMENTS ON RECORD IN THIS OFFICE. I HAVE ALSO REVIEWED THE RECORDS OF THE SURVEYOR'S OFFICE AND THE RECORDS OF THE SURVEYOR'S OFFICE AND FROM A SURVEY MADE BY ME ON THE GROUND I FURTHER CERTIFY THAT THE REQUIREMENTS OF THE SURVEY ACT, UTAH, AND THE REQUIREMENTS OF THE SURVEY ACT, UTAH, HAVE BEEN COMPLIED WITH, AND THE LOTS MEET THE SITE DEVELOPMENT STANDARDS FOR THE ZONE IN WHICH THEY ARE LOCATED.

SIGNED THIS 12th DAY OF OCTOBER, 1993.

[Signature]



WEBER COUNTY ENGINEER

I HEREBY CERTIFY THAT THE REQUIREMENTS OF ALL APPLICABLE STATUTES AND ORDINANCES PREVIOUS TO APPROVAL BY THE ENGINEER OF THE FOREGOING PLAT AND REVISIONS HAVE BEEN COMPLETED WITH DATED THIS 12th DAY OF OCTOBER, 1993.

[Signature]

WEBER COUNTY ATTORNEY

I HEREBY CERTIFY THAT THE REQUIREMENTS OF ALL APPLICABLE STATUTES AND ORDINANCES PREVIOUS TO APPROVAL BY THE ATTORNEY OF THE FOREGOING PLAT AND REVISIONS HAVE BEEN COMPLETED WITH DATED THIS 12th DAY OF OCTOBER, 1993.

[Signature]

WEBER COUNTY RECORDER

RECORDED FOR: *[Signature]*
DATE: *[Signature]*

RECEIVED
FEB 12 1997
Weber County Surveyor

36 - 64