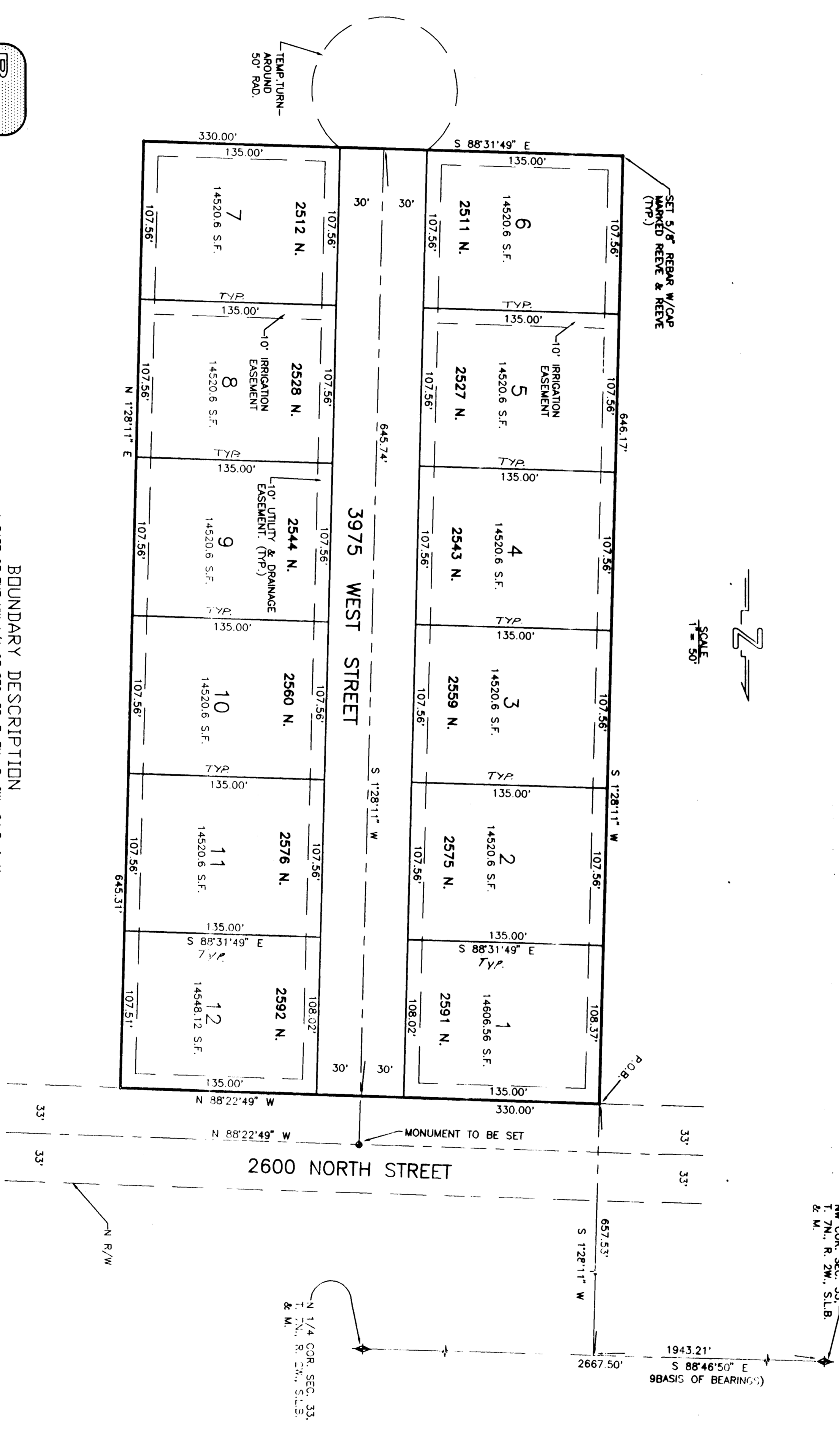


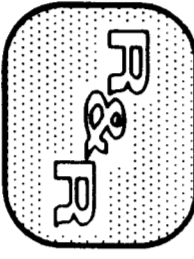
38-98

# MARIGOLD ESTATES SUBDIVISION

PART OF THE NW 1/4 OF SEC. 33, T. 7N., R. 2W., S.L.B. & M., U.S. SURVEY  
PLAIN CITY, WEBER COUNTY, UTAH  
FEBRUARY, 1994



REVVE & REVVE, INC.  
CITY ENGINEER  
LAND PLANNING AND SITE DESIGN  
DRIVEN UTM



PLAIN CITY PLANNING COMMISSION  
APPROVED BY THE PLAIN CITY PLANNING COMMISSION  
ON THE DAY OF FEBRUARY 19, 1994  
Chairman

Chairman

PLAIN CITY ENGINEER  
I HEREBY CERTIFY THAT I HAVE CAREFULLY INVESTIGATED THE LINES  
OF SURVEY OF THE FOREGOING PLAT AND LEGAL DESCRIPTION OF THE  
ACRES WITH THE LINES AND MONUMENTS ON RECORD IN THIS OFFICE  
IN COMPLIANCE WITH THE REQUIREMENTS OF PLAIN CITY ORDINANCES  
STOKED THIS DAY OF FEBRUARY 19, 1994.

PLAIN CITY ACCEPTANCE  
THIS IS TO CERTIFY THAT THIS PLAT AND DEDICATION OF THIS  
PLAT WERE DULY APPROVED AND ACCEPTED BY THE COMMONS  
OF THE PLAIN CITY, UTAH THIS DAY OF FEBRUARY 19, 1994.  
Attest:

PLAIN CITY ATTORNEY  
I HEREBY CERTIFY THAT THE REQUIREMENTS OF ALL APPLICABLE STATUTES AND  
ORDINANCES PREVIOUS TO APPROVAL BY THE ATTORNEY OF THE  
PLAT AND DEDICATION HAVE BEEN COMPLIED WITH AND THAT THE  
PLAT IS IN FULL COMPLIANCE WITH THE REQUIREMENTS OF PLAIN CITY  
ORDINANCES.

BOUNDARY DESCRIPTION  
A PART OF THE NW 1/4 OF SEC. 33, T. 7N., R. 2W., S.L.B. & M.  
DESCRIBED BEGINNING AT A POINT S 88°46'50" E ALONG THE SECTION LINE  
(BASE OF BEARING) 1943.21' TO POINT A; THENCE S 88°46'50" E  
1943.21' TO POINT B; THENCE S 88°46'50" E 2667.50' TO POINT C;  
THENCE S 88°46'50" E 2667.50' TO POINT D; THENCE S 88°46'50" E  
1943.21' TO POINT E; THENCE S 88°46'50" E 1943.21' TO POINT F;  
THENCE S 88°46'50" E 1943.21' TO POINT G; THENCE S 88°46'50" E  
1943.21' TO POINT H; THENCE S 88°46'50" E 1943.21' TO POINT I;  
THENCE S 88°46'50" E 1943.21' TO POINT J; THENCE S 88°46'50" E  
1943.21' TO POINT K; THENCE S 88°46'50" E 1943.21' TO POINT L;  
THENCE S 88°46'50" E 1943.21' TO POINT M; THENCE S 88°46'50" E  
1943.21' TO POINT N; THENCE S 88°46'50" E 1943.21' TO POINT O;  
THENCE S 88°46'50" E 1943.21' TO POINT P; THENCE S 88°46'50" E  
1943.21' TO POINT Q; THENCE S 88°46'50" E 1943.21' TO POINT R;  
THENCE S 88°46'50" E 1943.21' TO POINT S; THENCE S 88°46'50" E  
1943.21' TO POINT T; THENCE S 88°46'50" E 1943.21' TO POINT U;  
THENCE S 88°46'50" E 1943.21' TO POINT V; THENCE S 88°46'50" E  
1943.21' TO POINT W; THENCE S 88°46'50" E 1943.21' TO POINT X;  
THENCE S 88°46'50" E 1943.21' TO POINT Y; THENCE S 88°46'50" E  
1943.21' TO POINT Z; THENCE S 88°46'50" E 1943.21' TO POINT A.

MARRIAGE  
THE PURPOSE OF THIS PLAT IS TO SUBDIVIDE THIS PROPERTY  
INTO LOTS AND STREETS THAT HAVE BEEN PERFORMED ON THE  
RECORDS OF THE PLAIN CITY, UTAH TO ESTABLISH THE BOUNDARY  
LINES SHOWN HEREON.

SURVEYOR'S CERTIFICATE  
I, JAMES B. REVVE, A REGISTERED PROFESSIONAL SURVEYOR  
IN THE STATE OF UTAH, HEREBY CERTIFY THAT THIS PLAT  
WAS PREPARED BY ME OR UNDER MY CLOSE PERSONAL  
SUPERVISION AND IS A TRUE AND CORRECT REPRESENTATION OF  
THE SURVEY AND FIELD NOTES AND RECORDS OF THE SURVEY  
AND THAT I AM A MEMBER OF THE SURVEYORS ASSOCIATION OF  
UTAH AND AM IN FULL COMPLIANCE WITH THE REQUIREMENTS  
OF THE UTAH SURVEYING ACT AND THE REQUIREMENTS OF  
THE PLAIN CITY, UTAH. I HAVE REVIEWED THE PLAT AND  
FIELD NOTES AND RECORDS OF THE SURVEY AND AM SATISFIED  
THAT THE PLAT IS A TRUE AND CORRECT REPRESENTATION  
OF THE SURVEY AND FIELD NOTES AND RECORDS OF THE  
SURVEY AND THAT I AM A MEMBER OF THE SURVEYORS  
ASSOCIATION OF UTAH AND AM IN FULL COMPLIANCE WITH  
THE REQUIREMENTS OF THE UTAH SURVEYING ACT AND THE  
REQUIREMENTS OF THE PLAIN CITY, UTAH.

OWNERS' DEDICATION AND CERTIFICATION  
WE, THE UNDERSIGNED OWNERS OF THE HEREIN-DESCRIBED TRACT OF  
LAND, DO HEREBY DEDICATE AND CONVEY TO THE PUBLIC  
THE TRACT OF LAND HEREIN DESCRIBED AS STREETS, THE SAME TO BE USED AS  
PUBLIC THOROUGHFARES FOREVER AND ALSO DEDICATE TO PLAIN CITY,  
UTAH, THE TRACT OF LAND HEREIN DESCRIBED AS LOTS, THE SAME TO BE USED  
FOR THE INSTALLATION, MAINTENANCE AND OPERATION OF PUBLIC  
UTILITY PLANT LINES AND SHOWN AS MAY BE AUTHORIZED BY  
THE PLAIN CITY, UTAH. THE UNDERSIGNED HEREBY CERTIFY THAT THIS SUBDIVISION WAS MET  
ALL THE REQUIREMENTS OF PLAIN CITY, UTAH.

ACKNOWLEDGEMENT  
STATE OF UTAH  
COUNTY OF WEBER  
I, the undersigned, being duly qualified and sworn, do hereby certify that the foregoing plat was prepared by me or under my close personal supervision and is a true and correct representation of the survey and field notes and records of the survey and that I am a member of the Surveyors Association of Utah and am in full compliance with the requirements of the Utah Surveying Act and the requirements of the Plain City, Utah.

ACKNOWLEDGEMENT  
STATE OF UTAH  
COUNTY OF WEBER  
I, the undersigned, being duly qualified and sworn, do hereby certify that the foregoing plat was prepared by me or under my close personal supervision and is a true and correct representation of the survey and field notes and records of the survey and that I am a member of the Surveyors Association of Utah and am in full compliance with the requirements of the Utah Surveying Act and the requirements of the Plain City, Utah.

WEBER COUNTY RECORDER  
RECORDED FOR  
PLAIN CITY  
RECORDS, PAGE 33

38-33

RECEIVED  
FEB 19 1994  
Weber County Surveyor