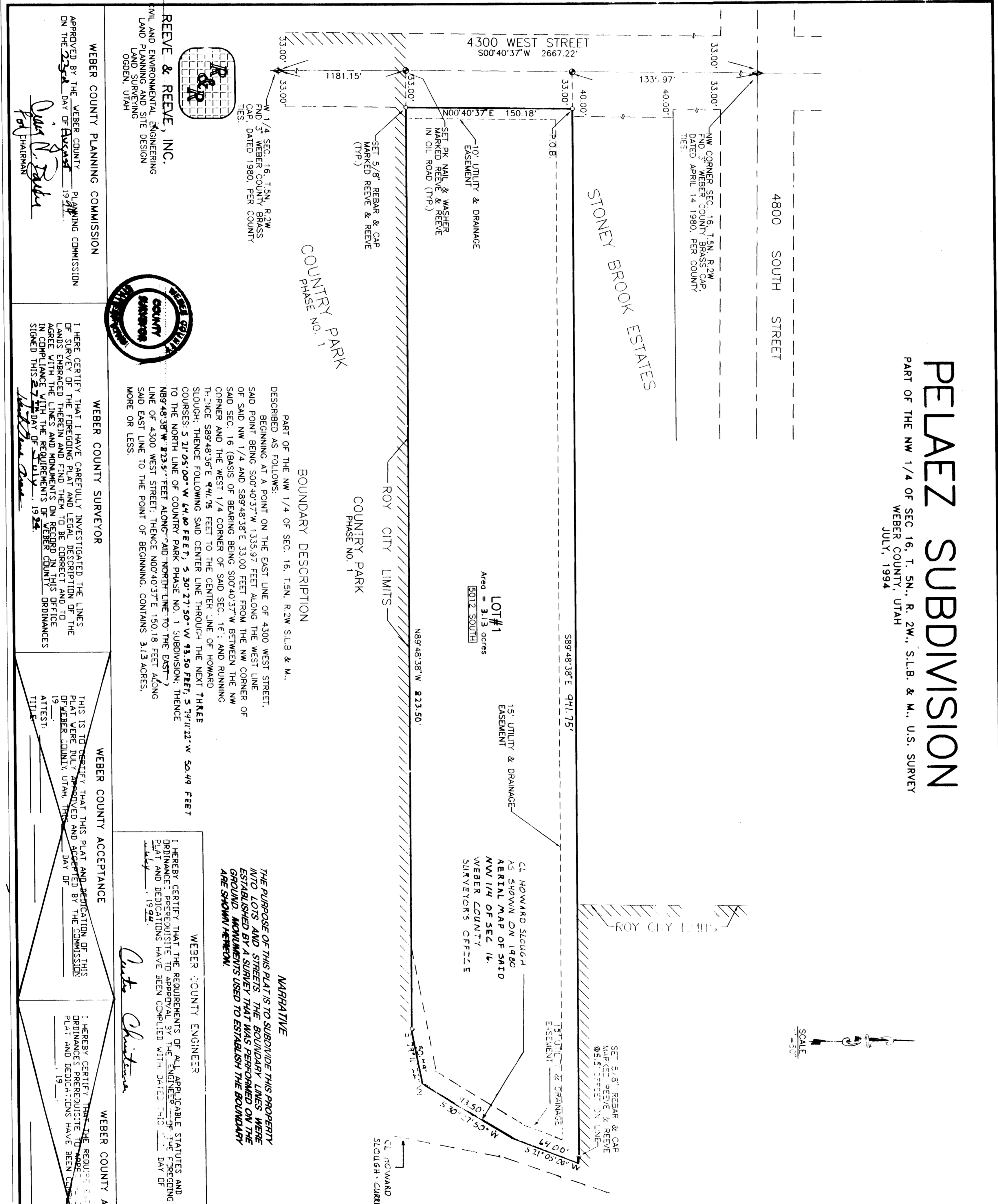


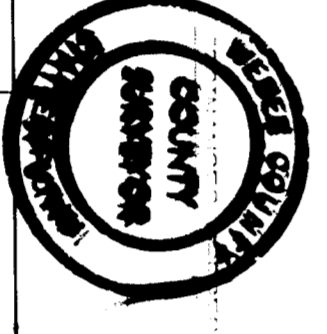
52-98

PELAEZ SUBDIVISION
PART OF THE NW 1/4 OF SEC. 16, T. 5N., R. 2W., S.L.B. & M., U.S. SURVEY
WEBER COUNTY, UTAH
JULY, 1994



WEBER COUNTY PLANNING COMMISSION
APPROVED BY THE WEBER COUNTY PLANNING COMMISSION ON THE 23RD DAY OF MAY, 1994
Janet B. Bader
Chairman

REEVE & REEVE, INC.
CIVIL AND ENVIRONMENTAL ENGINEERING
LAND PLANNING ARCHITECTS
PO BOX 1980
ODEN, UTAH



WEBER COUNTY SUPERVISOR
I HEREBY CERTIFY THAT I HAVE CAREFULLY INVESTIGATED THE LINES AND BOUNDARIES SHOWN ON THIS SUBDIVISION AND AGREE WITH THE LINES AND BOUNDARIES ON THE BASIS OF THE RECORDS AND SURVEY DATA SHOWN HEREON.
SIGNED THIS 27TH DAY OF JULY, 1994
John R. Cook

WEBER COUNTY ACCEPTANCE
THIS IS TO CERTIFY THAT THIS PLAN AND PORTION OF THIS PLAN WERE FILED AND ACCEPTED BY THE COMMISSION OF WEBER COUNTY UTAH, THIS 23RD DAY OF MAY, 1994.
ATTEST:
TITLE

WEBER COUNTY ENGINEER
I HEREBY CERTIFY THAT THE REQUIREMENTS OF ALL APPLICABLE STATUTES AND ORDINANCES PREVIOUSLY TO BEEN COMPLIED WITH ON THE DATE OF RECORDING AND THE PLAN HAS BEEN CORRECTLY RECORDED.
SIGNED THIS 27TH DAY OF JULY, 1994
A. H. Christensen

WEBER COUNTY ATTORNEY
I HEREBY CERTIFY THAT THE REQUIREMENTS OF ALL APPLICABLE STATUTES AND ORDINANCES PREVIOUSLY TO BEEN COMPLIED WITH ON THE DATE OF RECORDING AND THE PLAN HAS BEEN CORRECTLY RECORDED.
SIGNED THIS 27TH DAY OF JULY, 1994

WEBER COUNTY RECORDER
WEBER COUNTY RECORDER
RECORDED FOR:
WEBER COUNTY RECORDER
RECORDED FOR:
WEBER COUNTY RECORDER
RECORDED FOR:

MARRIAGE
THE PURPOSE OF THIS PLAN IS TO SUBDIVIDE THIS PROPERTY INTO LOTS AND STREETS. THE BOUNDARIES SHOWN ON THIS PLAN AND THE BOUNDARIES USED TO ESTABLISH THE BOUNDARY ARE SHOWN HEREON.

ACKNOWLEDGEMENT
ON THE 27TH DAY OF JULY, 1994, PERSONALLY APPEARED before me the undersigned Notary Public, *William S. Smith*, and being duly sworn, acknowledged and certified that the above described land was the property of *Plan Hold Corporation* and that the above described land was being voluntarily and for the purposes herein mentioned.
WITNESSED my hand and the seal of my office this 27TH day of July, 1994.
William S. Smith
Notary Public

SUPERVISOR'S CERTIFICATE
I, the undersigned, a registered professional engineer, do hereby certify that I have carefully investigated the lines and boundaries shown on this subdivision and agree with the lines and boundaries on the basis of the records and survey data shown hereon.
SIGNED THIS 27TH DAY OF JULY, 1994
John R. Cook
Supervisor

OWNER'S DEDICATION AND CERTIFICATION
WE, THE UNDERSIGNED OWNERS OF THE HEREIN DESCRIBED LOTS AND STREETS AS SHOWN ON THIS PLAN AND NAME SAID TRACT "PELAEZ SUBDIVISION" AND HEREBY DEDICATE, GRANT AND ASSIGN TO THE PUBLIC THE INSTALLATION, MAINTENANCE AND OPERATION OF PUBLIC UTILITY, DRAINAGE AND DRAINAGE AS SHOWN ON THIS PLAN AND NAME SAID TRACT "PELAEZ SUBDIVISION".
SIGNED THIS 27TH DAY OF JULY, 1994
Plan Hold Corporation

RECEIVED
FEB 12 1997
WEBER COUNTY RECORDER