

CS-93

SJOL SUBDIVISION

PART OF THE SOUTHEAST QUARTER OF SECTION 17

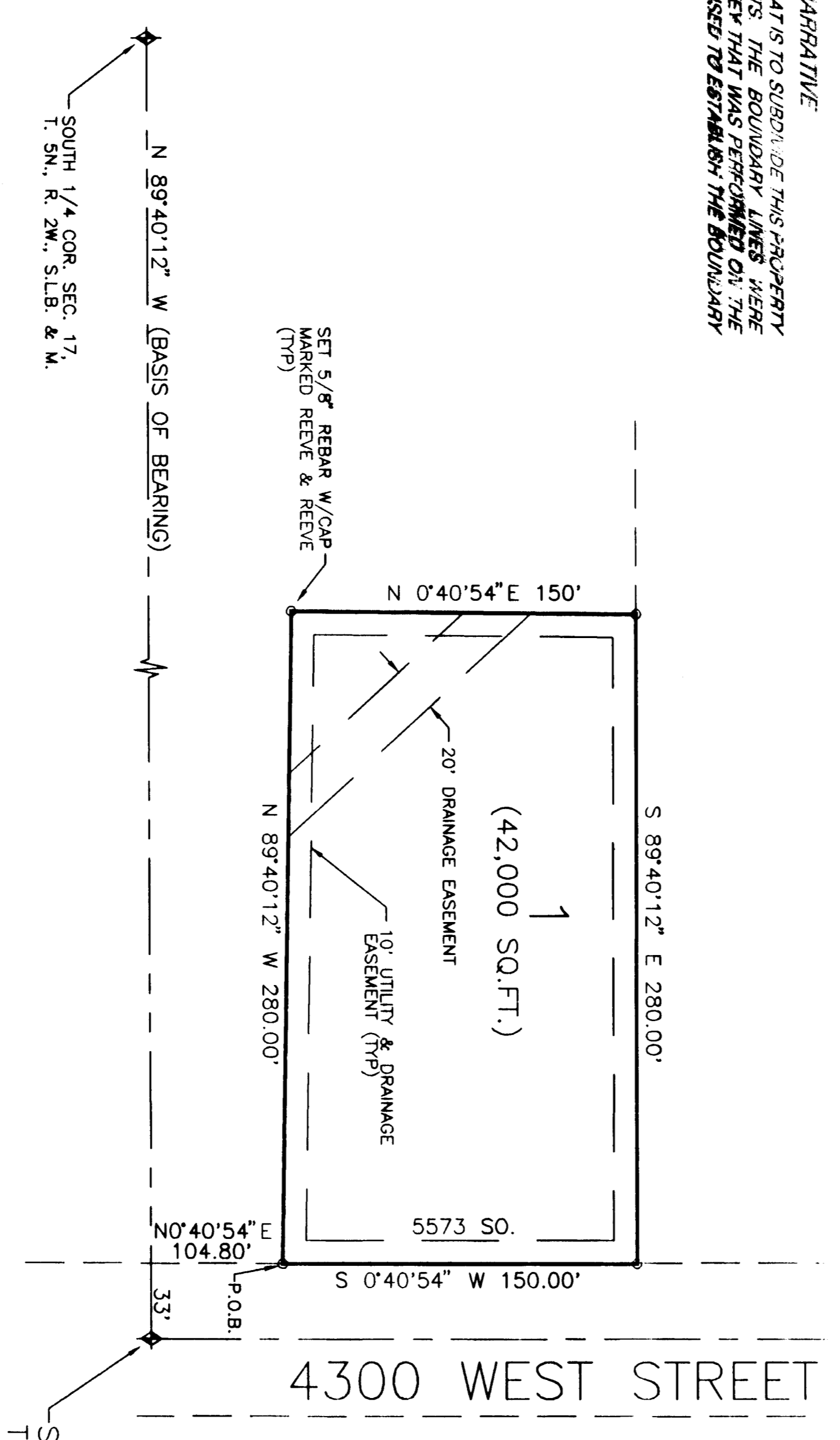
T.5N., R.2W., S.L.B.M

WEBER COUNTY, UTAH

AUGUST, 1993

BOUNDARY DESCRIPTION
PART OF THE SOUTHEAST QUARTER OF SECTION 17
T.5N., R.2W., S.L.B.M DESCRIBED AS FOLLOWS:
BEGINNING AT A POINT ON THE WEST LINE OF 4300 WEST STREET
WHICH IS N89°40'12" W. 33.00 FEET AND IN 40°54' E. SECTION 17,
AND RUNNING THENCE N. 89°40'12" W. 280.00 FEET TO THE
N. 0°40'54" E. 150.00 FEET; THENCE S 89°40'12" E. 280.00
FEET TO THE WEST LINE OF SAID STREET; THENCE S 0°40'54" W.
150.00 FEET TO THE POINT OF BEGINNING.

MARRIAGE
THE PURPOSE OF THIS PLAT IS TO SUBDIVIDE THIS PARAPHRASE
INTO LOTS AND STREETS THE BOUNDARY LINES HERE
ESTABLISHED BY A SURVEY THAT WAS PERFORMED ON THE
GROUND MONUMENTS USED TO ESTABLISH THE BOUNDARY
ARE SHOWN HEREON



REEVE & REEVE, INC.
CIVIL AND ENVIRONMENTAL ENGINEERING
LAND SURVEYING DESIGN
DODDEN, UTAH

WEBER COUNTY PLANNING COMMISSION
APPROVED BY THE WEBER COUNTY PLANNING COMMISSION
ON THE 15th DAY OF August 1993

WEBER COUNTY SURVEYOR
I HEREBY CERTIFY THAT I HAVE CAREFULLY INVESTIGATED THE LINES
DEPENDING ON THE FOREGOING PLAT AND LEAD, DESCRIPTION OF THE
AGRE WITH THE LINES AND MONUMENTS ON RECORD IN THIS OFFICE
IN COMPLIANCE WITH THE REQUIREMENTS OF WEBER COUNTY ORDINANCES
DATED THIS 21st DAY OF August, 1993.

WEBER COUNTY ACCEPTANCE
THIS IS TO CERTIFY THAT THIS PLAT AND DEDICATION OF THIS
PLAT AND DEDICATIONS HAVE BEEN COMPLETED WITH DATED THIS 21st DAY OF
August, 1993.

WEBER COUNTY ATTORNEY
I HEREBY CERTIFY THAT THE REQUIREMENTS OF ALL APPLICABLE STATUTES AND
ORDINANCES OF WEBER COUNTY HAVE BEEN COMPLETED WITH DATED THIS 21st DAY OF
August, 1993.

WEBER COUNTY ENGINEER
I HEREBY CERTIFY THAT THE REQUIREMENTS OF ALL APPLICABLE STATUTES AND
ORDINANCES OF WEBER COUNTY HAVE BEEN COMPLETED WITH DATED THIS 21st DAY OF
August, 1993.

SURVEYOR'S CERTIFICATE
I, JOHN B. REEVE, A REGISTERED PROFESSIONAL SURVEYOR
IN THE STATE OF UTAH, DO HEREBY CERTIFY THAT THE ABOVE
DESIGNATED SCALE AND IS A TRUE AND CORRECT REPRESENTATION OF
THE HEREIN DESCRIBED LANDS INCLUDED IN SAID SUBDIVISION
UNLESS OTHERWISE NOTED ON THE SURVEY. I HAVE BEEN
REGISTERED IN THE STATE OF UTAH SINCE 1988 AND AM A MEMBER OF THE
SURVEYORS ASSOCIATION OF UTAH. I FURTHER CERTIFY THAT THE REQUIREMENTS OF ALL APPLICABLE
STATUTES AND ORDINANCES OF WEBER COUNTY HAVE BEEN COMPLETED
WITH DATED THIS 21st DAY OF August, 1993.

OWNER'S DEDICATION AND CERTIFICATION
WE, THE UNDERSIGNED OWNERS OF THE HEREIN-DESCRIBED TRACT OF
LAND, HEREBY SET APART AND SUBDIVIDE THE SAID TRACT LOTS AND
STREETS AS SHOWN ON THIS PLAT AND HAVE SAID TRACT CONVEY TO
THE SUBDIVISION. WE, THE SAID PARTY OR PARTIES OF SAID
PUBLIC RECORD OF SAID SURVEY AND ALSO BEING TO BE
FILED IN THE PUBLIC RECORDS OF SAID COUNTY.

ACKNOWLEDGEMENT
STATE OF UTAH,)
COUNTY OF WEBER,) ss:
I, the undersigned, being specially appointed
and duly sworn, do hereby certify that the above
dedication and certification was made and that the
same is in full compliance with the requirements of
the laws of this state and in full compliance with the
requirements of the laws of this county.

ACKNOWLEDGEMENT
STATE OF UTAH,)
COUNTY OF WEBER,) ss:
I, the undersigned, being specially appointed
and duly sworn, do hereby certify that the above
dedication and certification was made and that the
same is in full compliance with the requirements of
the laws of this state and in full compliance with the
requirements of the laws of this county.

WEBER COUNTY
RECORDED AND RECORDED
ENTRY NO. 1133
DATE 2/12/93
RECORDED FOR:
STANLEY S. JOL
DOUG GAGGERS
WEBER COUNTY CLERK
DEPUTY

RECEIVED
FEB 12 1993
Webber County Surveyor