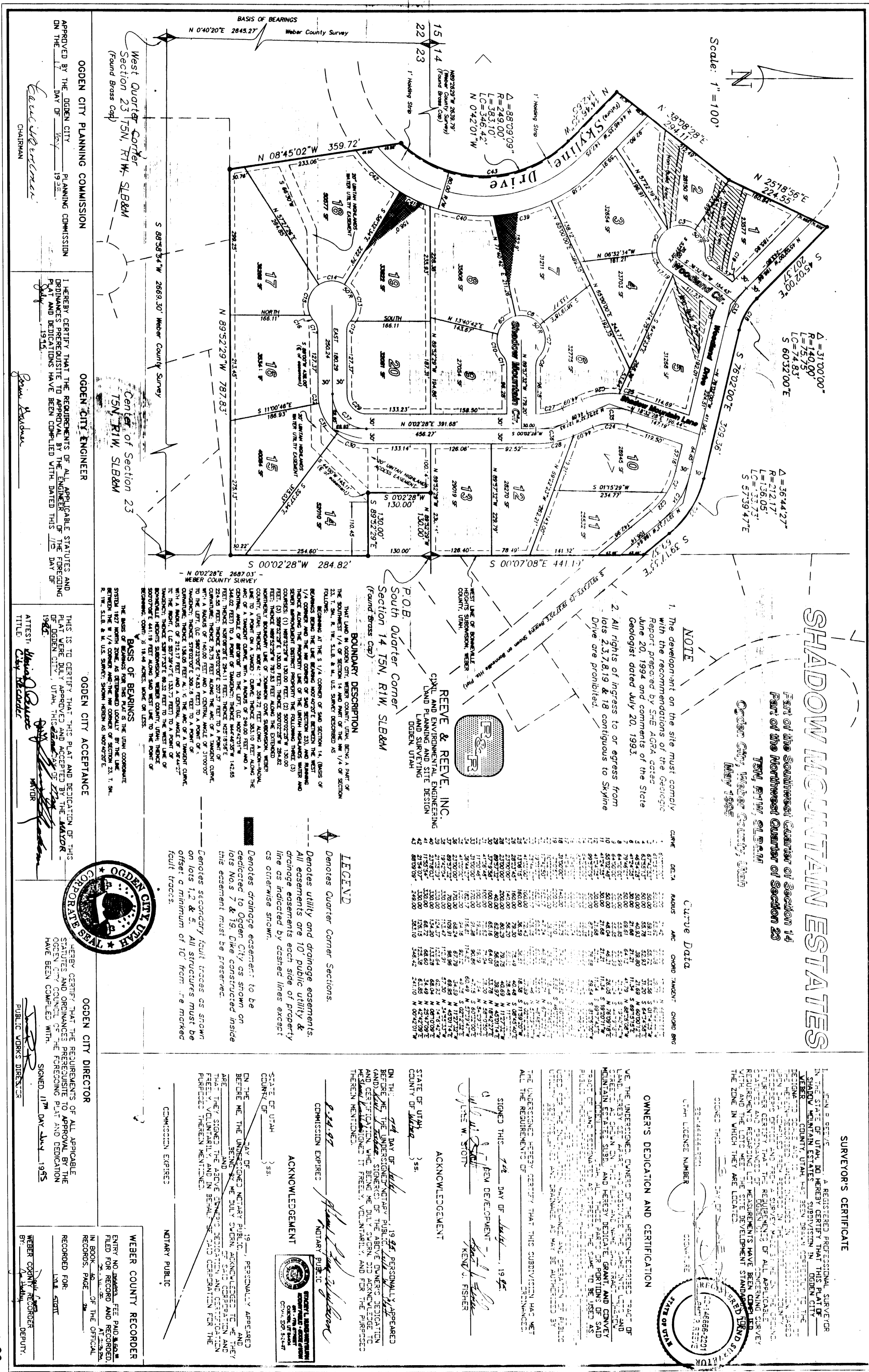


92-04



SHADOW MOUNTAIN ESTATES
Part of the Southwest Quarter of Section 14
Part of the Northwest Quarter of Section 23
T8N, R1W, S1B&M
Ogden City, Weber County, Utah
MAY 1995

NOTE
1. The development on the site must comply with the recommendations of the Geologic Report prepared by SHE AG&A dated June 20, 1994 and comments of the State Geologist dated July 20, 1993.
2. All rights of ingress to or egress from lots 2, 3, 7, 8, 19 & 20 contiguous to Skyline Drive are prohibited.

Curve Data

CHORD BEG.	CHORD END.	CHORD BEG. BEARING	CHORD END BEARING	CHORD DIST.	CHORD BEG. CURV. RAD.	CHORD END CURV. RAD.	CHORD BEG. CHORD BEG.	CHORD END CHORD BEG.
1	2	N 89°52'29"W	S 89°52'29"E	130.00	130.00	130.00	N 89°52'29"W	S 89°52'29"E
2	3	N 89°52'29"W	S 89°52'29"E	130.00	130.00	130.00	N 89°52'29"W	S 89°52'29"E
3	4	N 89°52'29"W	S 89°52'29"E	130.00	130.00	130.00	N 89°52'29"W	S 89°52'29"E
4	5	N 89°52'29"W	S 89°52'29"E	130.00	130.00	130.00	N 89°52'29"W	S 89°52'29"E
5	6	N 89°52'29"W	S 89°52'29"E	130.00	130.00	130.00	N 89°52'29"W	S 89°52'29"E
6	7	N 89°52'29"W	S 89°52'29"E	130.00	130.00	130.00	N 89°52'29"W	S 89°52'29"E
7	8	N 89°52'29"W	S 89°52'29"E	130.00	130.00	130.00	N 89°52'29"W	S 89°52'29"E
8	9	N 89°52'29"W	S 89°52'29"E	130.00	130.00	130.00	N 89°52'29"W	S 89°52'29"E
9	10	N 89°52'29"W	S 89°52'29"E	130.00	130.00	130.00	N 89°52'29"W	S 89°52'29"E
10	11	N 89°52'29"W	S 89°52'29"E	130.00	130.00	130.00	N 89°52'29"W	S 89°52'29"E
11	12	N 89°52'29"W	S 89°52'29"E	130.00	130.00	130.00	N 89°52'29"W	S 89°52'29"E
12	13	N 89°52'29"W	S 89°52'29"E	130.00	130.00	130.00	N 89°52'29"W	S 89°52'29"E
13	14	N 89°52'29"W	S 89°52'29"E	130.00	130.00	130.00	N 89°52'29"W	S 89°52'29"E
14	15	N 89°52'29"W	S 89°52'29"E	130.00	130.00	130.00	N 89°52'29"W	S 89°52'29"E
15	16	N 89°52'29"W	S 89°52'29"E	130.00	130.00	130.00	N 89°52'29"W	S 89°52'29"E
16	17	N 89°52'29"W	S 89°52'29"E	130.00	130.00	130.00	N 89°52'29"W	S 89°52'29"E
17	18	N 89°52'29"W	S 89°52'29"E	130.00	130.00	130.00	N 89°52'29"W	S 89°52'29"E
18	19	N 89°52'29"W	S 89°52'29"E	130.00	130.00	130.00	N 89°52'29"W	S 89°52'29"E
19	20	N 89°52'29"W	S 89°52'29"E	130.00	130.00	130.00	N 89°52'29"W	S 89°52'29"E
20	21	N 89°52'29"W	S 89°52'29"E	130.00	130.00	130.00	N 89°52'29"W	S 89°52'29"E
21	22	N 89°52'29"W	S 89°52'29"E	130.00	130.00	130.00	N 89°52'29"W	S 89°52'29"E
22	23	N 89°52'29"W	S 89°52'29"E	130.00	130.00	130.00	N 89°52'29"W	S 89°52'29"E

BOUNDARY DESCRIPTION
The Southwest 1/4 of Section 14 and part of the NE 1/4 of Section 23, T8N, R1W, S1B&M, Utah, is bounded on the north by the NE 1/4 of Section 14, on the east by the NE 1/4 of Section 23, on the south by the SW 1/4 of Section 14, and on the west by the SW 1/4 of Section 23. The boundary is described as follows: ...

LEGEND
Denotes Quarter Corner Sections.
Denotes utility and drainage easements.
All easements are 10' public utility & drainage easements each side of property line as indicated by dashed lines except as otherwise shown.
Denotes drainage easement: to be dedicated to Ogden City as shown on lots Nos 7 & 19. Dike constructed inside this easement must be preserved.
Denotes secondary fault traces as shown on lots 1, 2, & 3. All structures must be clear a minimum of 10' from 1/8' mirrored fault traces.

OGDEN CITY PLANNING COMMISSION
APPROVED BY THE OGDEN CITY PLANNING COMMISSION ON THE DAY OF 1995
[Signature]
CHAIRMAN

OGDEN CITY ENGINEER
HEREBY CERTIFY THAT THE REQUIREMENTS OF ALL APPLICABLE STATUTES AND ORDINANCES AND REGULATIONS HAVE BEEN COMPLIED WITH DATED THIS 1995
[Signature]
OGDEN CITY ENGINEER

OGDEN CITY DIRECTOR
HEREBY CERTIFY THAT THE REQUIREMENTS OF ALL APPLICABLE STATUTES AND ORDINANCES PRESENTED TO APPROVAL BY THE OGDEN CITY COUNCIL OR THE FOREGOING PLAN AND CERTIFICATION HAVE BEEN COMPLIED WITH.
SIGNED 17th DAY OF MAY 1995
PUBLIC WORKS DIRECTOR

OGDEN CITY DIRECTOR
HEREBY CERTIFY THAT THE REQUIREMENTS OF ALL APPLICABLE STATUTES AND ORDINANCES PRESENTED TO APPROVAL BY THE OGDEN CITY COUNCIL OR THE FOREGOING PLAN AND CERTIFICATION HAVE BEEN COMPLIED WITH.
SIGNED 17th DAY OF MAY 1995
PUBLIC WORKS DIRECTOR

NOTES:
THE PURCHASE OF THIS PLAT IN TO SQUARE OF THE FOREWEY AND LOGS AND STREETS THE EIGHTH AND NINTH WERE ESTABLISHED BY THE STATE OF UTAH IN 1863 AND THE BOUNDARY LINE BETWEEN THE SECTIONS 14 AND 23 IS THE BOUNDARY OF THE STATE OF UTAH.

SURVEYOR'S CERTIFICATE
I, JOHN S. FISHER, A REGISTERED PROFESSIONAL SURVEYOR IN THE STATE OF UTAH, DO HEREBY CERTIFY THAT THIS PLAT OF SHADOW MOUNTAIN ESTATES SUBMITTED TO THE OGDEN CITY ENGINEER AND THE OGDEN CITY DIRECTOR FOR APPROVAL IS A TRUE AND CORRECT REPRESENTATION OF THE SURVEY MADE BY ME AND THAT THE REQUIREMENTS OF ALL APPLICABLE STATUTES AND ORDINANCES PRESENTED TO APPROVAL BY THE OGDEN CITY COUNCIL OR THE FOREGOING PLAN AND CERTIFICATION HAVE BEEN COMPLIED WITH AND THAT THE DEVELOPMENT STANDARDS AND ZONING IN WHICH THE SAME ARE LOCATED ARE BEING OBSERVED.
SIGNED THIS 17th DAY OF MAY 1995
JOHN S. FISHER
SURVEYOR

OWNERS DEDICATION AND CERTIFICATION
WE, THE UNDERSIGNED OWNERS OF THE HEREIN-RECORDED TRACT OF LAND, DO HEREBY DEDICATE, GRANT AND CONVEY TO THE CITY OF OGDEN, UTAH, A PUBLIC UTILITY AND DRAINAGE EASEMENT AS SHOWN ON SAID PLAT AND CERTIFY THAT WE HAVE BEEN ADVISED BY A LICENSED SURVEYOR THAT THE SAME ARE BEING OBSERVED.
ALL THE UNDERSIGNED HEREBY CERTIFY THAT THIS DEDICATION WAS MET AND THE SAME IS BEING OBSERVED.
SIGNED THIS 17th DAY OF MAY 1995
STATE OF UTAH
KENNETH W. FISHER
ACKNOWLEDGEMENT

ACKNOWLEDGEMENT
BY THE UNDERSIGNED NEARLY PUBLIC, PERSONALLY APPEARED BEFORE ME, THE UNDERSIGNED NEARLY PUBLIC, AND I HAVE READ THE FOREGOING DEDICATION AND CERTIFICATION AND I HAVE BEEN ADVISED BY A LICENSED SURVEYOR THAT THE SAME ARE BEING OBSERVED.
I HAVE THEREUPON SIGNED THIS INSTRUMENT AND CERTIFICATION FREELY, VOLUNTARILY AND IN BEHALF OF THE UNDERSIGNED NEARLY PUBLIC.
PURSUED THEREIN MENTIONED.
SIGNED 17th DAY OF MAY 1995
STATE OF UTAH
COUNTY OF UTAH
ACKNOWLEDGEMENT

WEBER COUNTY RECORDER
ENTRY NO. 1584, FEE PAID, \$4.00
FILED FOR RECORD AND RECORDED IN BOOK 2, PAGE 28
RECORDED FOR: LAMBERT
BY: A. J. FISHER, CLERK
MAY 18 1995

RECEIVED
FEB 18 1995
Weber County Surveyor
Weber County Surveyor