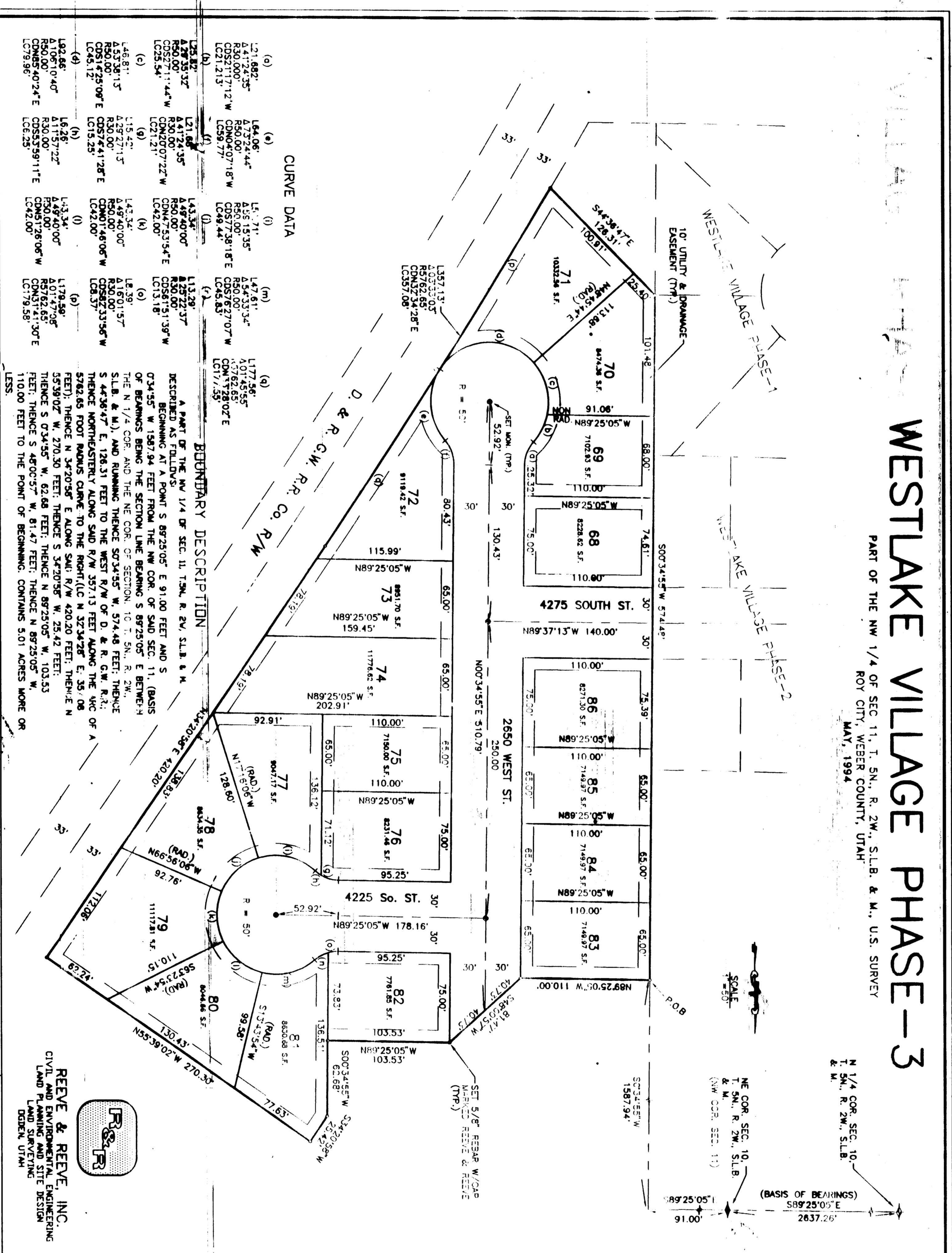


4-98

# WESTLAKE VILLAGE PHASE-3

PART OF THE NW 1/4 OF SEC. 11, T. 5N., R. 2W., S.1.B. & M., U.S. SURVEY  
ROY CITY, WEBER COUNTY, UTAH  
MAY, 1994



**CURVE DATA**

Stationing	Curve Data
1+11.8823	(a) L=1.71, R=113.31
1+13.5923	(a) L=1.71, R=113.31
1+15.3023	(a) L=1.71, R=113.31
1+17.0123	(a) L=1.71, R=113.31
1+18.7223	(a) L=1.71, R=113.31
1+20.4323	(a) L=1.71, R=113.31
1+22.1423	(a) L=1.71, R=113.31
1+23.8523	(a) L=1.71, R=113.31
1+25.5623	(a) L=1.71, R=113.31
1+27.2723	(a) L=1.71, R=113.31
1+28.9823	(a) L=1.71, R=113.31
1+30.6923	(a) L=1.71, R=113.31
1+32.4023	(a) L=1.71, R=113.31
1+34.1123	(a) L=1.71, R=113.31
1+35.8223	(a) L=1.71, R=113.31
1+37.5323	(a) L=1.71, R=113.31
1+39.2423	(a) L=1.71, R=113.31
1+40.9523	(a) L=1.71, R=113.31
1+42.6623	(a) L=1.71, R=113.31
1+44.3723	(a) L=1.71, R=113.31
1+46.0823	(a) L=1.71, R=113.31
1+47.7923	(a) L=1.71, R=113.31
1+49.5023	(a) L=1.71, R=113.31
1+51.2123	(a) L=1.71, R=113.31
1+52.9223	(a) L=1.71, R=113.31
1+54.6323	(a) L=1.71, R=113.31
1+56.3423	(a) L=1.71, R=113.31
1+58.0523	(a) L=1.71, R=113.31
1+59.7623	(a) L=1.71, R=113.31
1+61.4723	(a) L=1.71, R=113.31
1+63.1823	(a) L=1.71, R=113.31
1+64.8923	(a) L=1.71, R=113.31
1+66.6023	(a) L=1.71, R=113.31
1+68.3123	(a) L=1.71, R=113.31
1+70.0223	(a) L=1.71, R=113.31
1+71.7323	(a) L=1.71, R=113.31
1+73.4423	(a) L=1.71, R=113.31
1+75.1523	(a) L=1.71, R=113.31
1+76.8623	(a) L=1.71, R=113.31
1+78.5723	(a) L=1.71, R=113.31
1+80.2823	(a) L=1.71, R=113.31
1+81.9923	(a) L=1.71, R=113.31
1+83.7023	(a) L=1.71, R=113.31
1+85.4123	(a) L=1.71, R=113.31
1+87.1223	(a) L=1.71, R=113.31
1+88.8323	(a) L=1.71, R=113.31
1+90.5423	(a) L=1.71, R=113.31
1+92.2523	(a) L=1.71, R=113.31
1+93.9623	(a) L=1.71, R=113.31
1+95.6723	(a) L=1.71, R=113.31
1+97.3823	(a) L=1.71, R=113.31
1+99.0923	(a) L=1.71, R=113.31
1+100.8023	(a) L=1.71, R=113.31

**BOUNDARY DESCRIPTION**

A PART OF THE NW 1/4 OF SEC. 11, T. 5N., R. 2W., S.1.B. & M. DESCRIBED AS FOLLOWS: BEGINNING AT A POINT S 89°25'00" E 91.00 FEET AND S 07°34'55" W 150.75 FEET FROM THE NW COR. OF SAID SEC. 11 (BASIS OF BEARINGS BEING THE SECTION LINE BEARING S 89°25'00" E 91.00 FEET); THENCE N 1/4 CURVE BEARING S 89°25'00" E 91.00 FEET; THENCE S 44°36'47" E 126.31 FEET TO THE WEST R/W OF D. & R. CO. R.R.; THENCE NORTHEASTERLY ALONG SAID R/W 357.13 FEET ALONG THE V.C. OF A 5742.65 FOOT MAJOR CURVE TO THE RIGHT (L.D. N 32°34'28" E, 35.08 FEET); THENCE N 2°20'58" E ALONG SAID R/W 420.20 FEET; THENCE S 55°39'07" W 270.50 FEET; THENCE S 34°20'58" W 25.42 FEET; THENCE S 07°34'55" W 62.68 FEET; THENCE N 89°25'00" W 103.53 FEET; THENCE S 89°25'00" E 91.00 FEET; THENCE N 89°25'00" E 91.00 FEET TO THE POINT OF BEGINNING CONTAINING 5.01 ACRES MORE OR LESS.

**ROY CITY PLANNING COMMISSION**  
APPROVED BY THE ROY CITY PLANNING COMMISSION ON THE \_\_\_\_\_ DAY OF \_\_\_\_\_ 1994.

**ROY CITY ENGINEER**  
I HEREBY CERTIFY THAT I HAVE CAREFULLY INVESTIGATED THE LINES OF SAID SURVEY AND THAT THE SAME ARE CORRECTLY LOCATED AND THAT THE LINES SHOWN THEREON ARE THE TRUE AND CORRECT LINES OF SAID SURVEY. I HAVE ALSO VERIFIED THAT THE SAID SURVEY IS IN COMPLIANCE WITH THE REQUIREMENTS OF UTAH STATUTES AND I HAVE SIGNED THIS PLAN AND THE REQUIREMENTS OF UTAH STATUTES.

**ROY CITY ACCEPTANCE**  
I HEREBY CERTIFY THAT THIS PLAN AND INDICATION OF THIS SURVEY HAS BEEN APPROVED AND ACCEPTED BY THE CITY ENGINEER AND THE CITY ENGINEER HAS SIGNED THIS PLAN AND THE REQUIREMENTS OF UTAH STATUTES.

**REVEE & REVEE, INC.**  
CIVIL AND ENVIRONMENTAL ENGINEERING  
LAND PLANNING AND SITE DESIGN  
DERRIN, UTAH

**MAPNOTICE**  
THE PURPOSE OF THIS PLAN IS TO SUBMIT THE NECESSARY RECORDING INFORMATION TO THE COUNTY ENGINEER FOR RECORDING AND TO BE A PART OF THE PUBLIC RECORD. THIS PLAN AND THE INFORMATION CONTAINED THEREON ARE NOT TO BE USED FOR ANY OTHER PURPOSES WITHOUT THE WRITTEN CONSENT OF REVEE & REVEE, INC.

**SURVEYOR'S CERTIFICATE**

I, **DAVID R. REVEE**, A REGISTERED PROFESSIONAL SURVEYOR IN THE STATE OF UTAH, DO HEREBY CERTIFY THAT THE PART OF THE NW 1/4 OF SECTION 11, T. 5N., R. 2W., S.1.B. & M., U.S. SURVEY, HAS BEEN CORRECTLY REPRODUCED FROM THE ORIGINAL SURVEY RECORDS AND THAT THE SAME ARE IN ACCORDANCE WITH THE REQUIREMENTS OF UTAH STATUTES. I HAVE ALSO VERIFIED THAT THE SAID SURVEY IS IN COMPLIANCE WITH THE REQUIREMENTS OF UTAH STATUTES AND I HAVE SIGNED THIS PLAN AND THE REQUIREMENTS OF UTAH STATUTES.

SIGNED THIS \_\_\_\_\_ DAY OF \_\_\_\_\_ 1994.

**OWNER'S DEDICATION AND CERTIFICATION**

WE, THE UNDERSIGNED, OWNERS OF THE PART OF THE NW 1/4 OF SECTION 11, T. 5N., R. 2W., S.1.B. & M., U.S. SURVEY, DO HEREBY DEDICATE AND CERTIFY TO THE PUBLIC THAT THE SAID SURVEY IS IN ACCORDANCE WITH THE REQUIREMENTS OF UTAH STATUTES AND THAT THE SAID SURVEY IS TO BE USED FOR THE INSTALLATION, MAINTENANCE, AND OPERATION OF PUBLIC UTILITY LINES AND DRAINAGE AS MAY BE AUTHORIZED BY THE PUBLIC UTILITIES COMMISSION OF THE STATE OF UTAH.

SIGNED THIS \_\_\_\_\_ DAY OF \_\_\_\_\_ 1994.

**ACKNOWLEDGEMENT**

STATE OF UTAH, COUNTY OF \_\_\_\_\_, I, \_\_\_\_\_, DO HEREBY ACKNOWLEDGE THAT I HAVE READ AND UNDERSTAND THE FOREGOING DEED AND THAT I HAVE SIGNED THE SAME FREELY AND VOLUNTARILY AND FOR THE PURPOSES THEREIN MENTIONED.

**ACKNOWLEDGEMENT**

STATE OF UTAH, COUNTY OF \_\_\_\_\_, I, \_\_\_\_\_, DO HEREBY ACKNOWLEDGE THAT I HAVE READ AND UNDERSTAND THE FOREGOING DEED AND THAT I HAVE SIGNED THE SAME FREELY AND VOLUNTARILY AND FOR THE PURPOSES THEREIN MENTIONED.

**COMMISSION EXPENSES**

NOTARY PUBLIC \_\_\_\_\_

**WIEBER COUNTY RECORDER**

RECORDED FOR \_\_\_\_\_

RECORDED IN BOOK \_\_\_\_\_ OF THE OFFICIAL RECORDS PAGE \_\_\_\_\_

RECORDED FOR \_\_\_\_\_

RECORDED IN BOOK \_\_\_\_\_ OF THE OFFICIAL RECORDS PAGE \_\_\_\_\_

RECEIVED  
FEB 15 1994  
WEBER COUNTY ENGINEER