

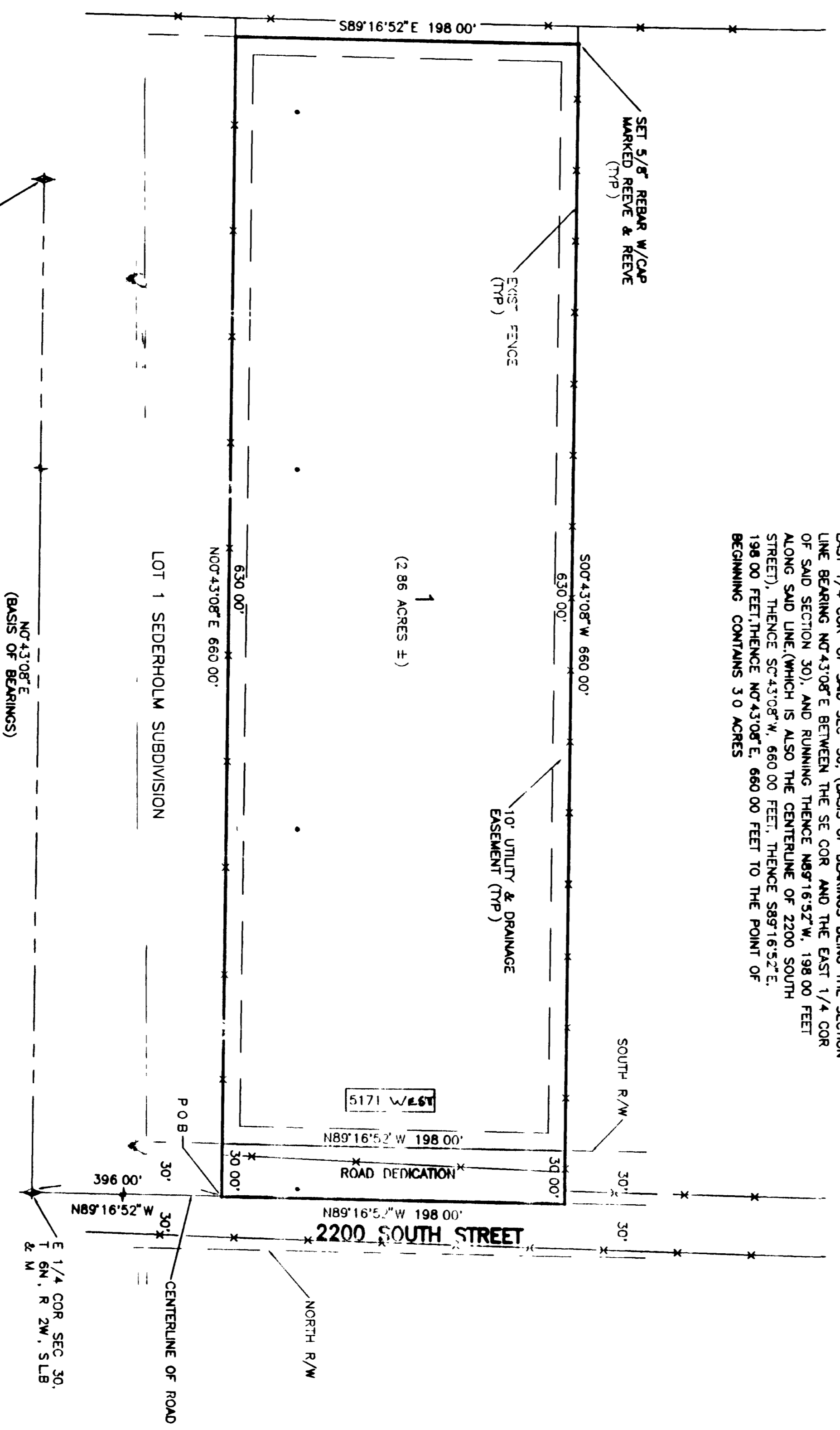
44-25

# VIGIL ESTATES SUBDIVISION

PART OF THE SE 1/4 OF SEC. 30, T. 6N., R. 2W., S.1.B. & M., U.S. SURVEY  
WEBER COUNTY, UTAH  
MARCH, 1994

### BOUNDARY DESCRIPTION

A PART OF THE SE 1/4 OF SEC. 30, T. 6N., R. 2W., S.1.B. & M. DESCRIBED AS FOLLOWS:  
BEGINNING AT A POINT N87°16'52"W, 396.00 FEET ALONG A LINE PERPENDICULAR TO THE EAST LINE OF SAID 1/4 SECTION FROM THE EAST 1/4 COR. OF SAID SEC. 30, (BASIS OF BEARINGS BEING THE SECTION LINE BEARING N0°43'08"E BETWEEN THE SE COR. AND THE EAST 1/4 COR. OF SAID SECTION AND) AND RUNNING THENCE N87°16'52"W, 198.00 FEET TO THE POINT OF BEGINNING; THENCE S87°16'52"E, 198.00 FEET THENCE S87°16'52"E, 198.00 FEET THENCE N0°43'08"E, 660.00 FEET TO THE POINT OF BEGINNING CONTAINS 3.0 ACRES



REEVE & REEVE, INC.  
CIVIL AND ENVIRONMENTAL ENGINEERING  
LAND PLANNING AND SITE DESIGN  
1000 SOUTH 2000 WEST  
CORNHILL, UTAH

WEBER COUNTY PLANNING COMMISSION  
APPROVED BY THE WEBER COUNTY PLANNING COMMISSION  
ON THE 15th DAY OF APRIL, 1994

*[Signature]*  
FOR CHAIRMAN

WEBER COUNTY SUGGESTION  
I HEREBY CERTIFY THAT I HAVE CAREFULLY INVESTIGATED THE SURVEY OF THE FOREGOING PLAT AND LEGAL REQUIREMENTS OF THE FOREGOING PLAT AND AGREE WITH THE LINES AND MONUMENTS ON SAID PLAT AND AGREE TO STORED THIS PLAT IN ACCORDANCE WITH THE REQUIREMENTS OF WEBER COUNTY ORDINANCES

WEBER COUNTY ACCEPTANCE  
THIS IS TO CERTIFY THAT THIS PLAT AND SPECIFICATION OF THIS PLAT WERE DULY REVIEWED AND APPROVED BY THE COMMISSIONERS OF THE BOARD OF COUNTY ENGINEERS AND ARCHITECTS OF THE COUNTY OF WEBER, UTAH, ON THE 15th DAY OF APRIL, 1994.

WEBER COUNTY ATTORNEY  
I HEREBY CERTIFY THAT THE REQUIREMENTS OF ALL APPLICABLE STATUTES AND ORDINANCES PERTAINING TO THE FOREGOING PLAT AND SPECIFICATION OF THIS PLAT HAVE BEEN FULLY COMPLIED WITH BY THE SUBMITTER OF THIS PLAT AND I HAVE REVIEWED THE PLAT AND SPECIFICATION OF THIS PLAT AND I HAVE NO OBJECTION TO THE FOREGOING PLAT AND SPECIFICATION OF THIS PLAT.

WEBER COUNTY ENGINEER  
I HEREBY CERTIFY THAT THE REQUIREMENTS OF ALL APPLICABLE STATUTES AND ORDINANCES PERTAINING TO THE FOREGOING PLAT AND SPECIFICATION OF THIS PLAT HAVE BEEN FULLY COMPLIED WITH DATED THIS 15th DAY OF APRIL, 1994.

WEBER COUNTY RECORDER  
I HEREBY CERTIFY THAT THE FOREGOING PLAT AND SPECIFICATION OF THIS PLAT HAVE BEEN FULLY RECORDED IN BOOK 27 OF THE OFFICIAL RECORDS, PAGE 77.

### OWNER'S DEDICATION AND CERTIFICATION

WE THE UNDERSIGNED OWNERS OF THE HEREIN-DESCRIBED TRACT OF LAND, BEING PART OF THE SE 1/4 OF SECTION 30, T. 6N., R. 2W., S.1.B. & M., U.S. SURVEY, WEBER COUNTY, UTAH, DO HEREBY DEDICATE AND CONVEY TO THE PUBLIC THE TRACT OF LAND BEING SET FORTH AS STREETS, THE SAME TO BE USED AS PUBLIC HIGHWAYS, AND ALSO DEDICATE TO WEBER COUNTY PUBLIC UTILITIES, AND WE AGREE TO MAINTAIN AND OPERATE THE SAME TO BE USED FOR THE INSTALLATION, MAINTENANCE, AND OPERATION OF PUBLIC UTILITIES AND DRAINAGE AS SHOWN ON SAID PLAT AND SPECIFICATION OF THIS PLAT, AND WE AGREE TO MAINTAIN AND OPERATE THE SAME TO BE USED FOR THE INSTALLATION, MAINTENANCE, AND OPERATION OF PUBLIC UTILITIES AND DRAINAGE AS SHOWN ON SAID PLAT AND SPECIFICATION OF THIS PLAT.

### ACKNOWLEDGEMENT

STATE OF UTAH  
COUNTY OF UTAH  
ON THE 18th DAY OF April, 1994, PERSONALLY APPEARED BEFORE ME THE UNDERSIGNED NOTARY PUBLIC, CAROL ANN LAYTON, AND CERTIFICATION, WHO BEING THE DULY SWORN, DID ACKNOWLEDGE TO ME THAT SHE HAD VOLUNTARILY AND FOR THE PURPOSES HEREIN MENTIONED.

*[Signature]*  
NOTARY PUBLIC

COMMISSION EXPIRES  
NOTARY PUBLIC

37-77

MARRIAGE

THE PURPOSE OF THIS PLAT IS TO SUBDIVIDE THE PROPERTY INTO LOTS AND STREETS THE BOUNDARIES THEREOF AS SHOWN ON THIS PLAT AND SPECIFICATION OF THIS PLAT WERE DULY REVIEWED AND APPROVED BY THE COMMISSIONERS OF THE BOARD OF COUNTY ENGINEERS AND ARCHITECTS OF THE COUNTY OF WEBER, UTAH, ON THE 15th DAY OF APRIL, 1994.

RECEIVED  
FEB 13 1997

001600  
001800