

DRAWING NUMBER
001636

DRAWING NUMBER
001636

DRAWING NUMBER
001636

DRAWING NUMBER
001636

PLAN HOLD CORPORATION • IRVINE, CALIFORNIA
REORDER BY NUMBER 075AR

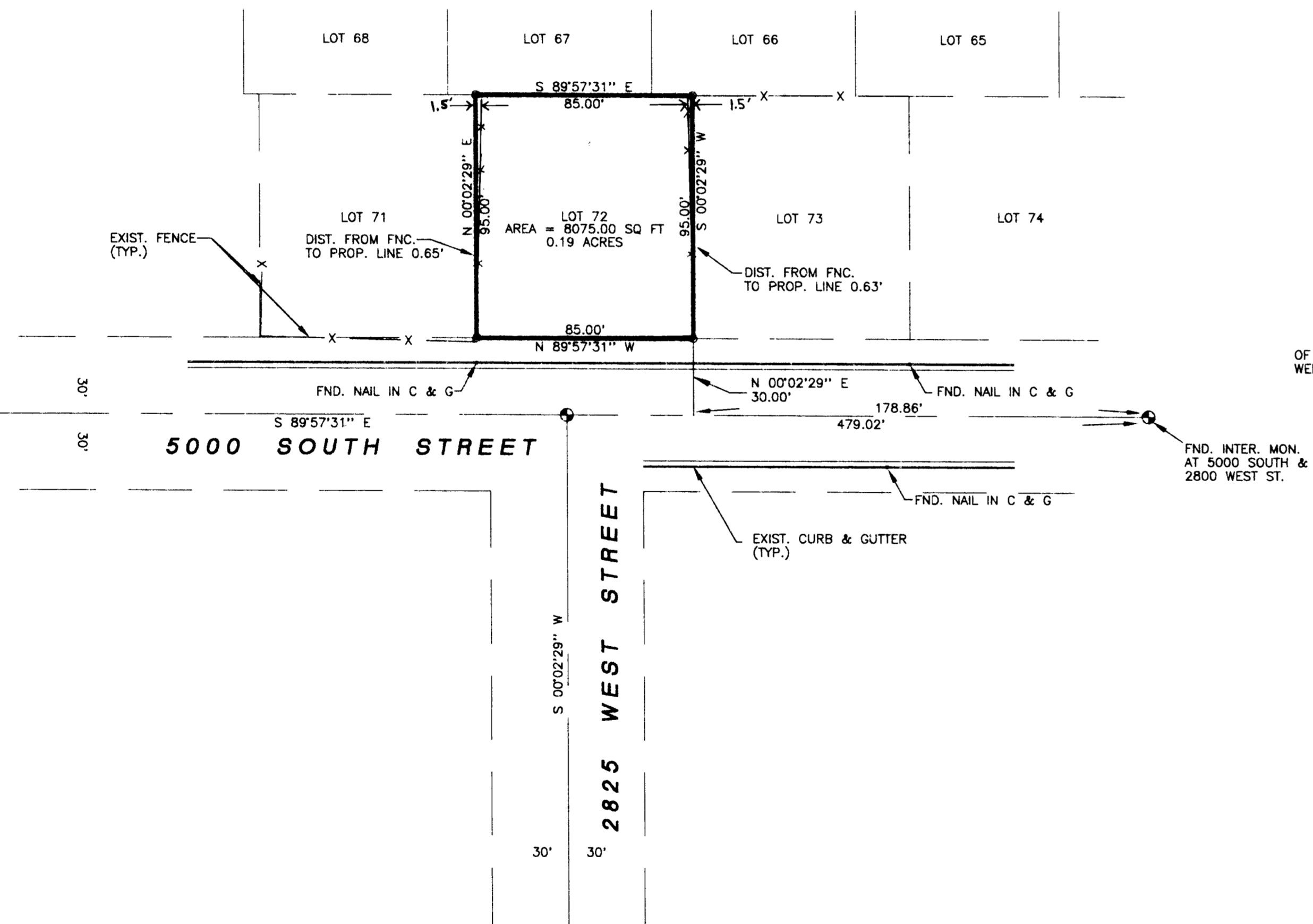
PLAN HOLD CORPORATION • IRVINE, CALIFORNIA
REORDER BY NUMBER 075AR

PLAN HOLD CORPORATION • IRVINE, CALIFORNIA
REORDER BY NUMBER 075AR

PLAN HOLD CORPORATION • IRVINE, CALIFORNIA
REORDER BY NUMBER 075AR

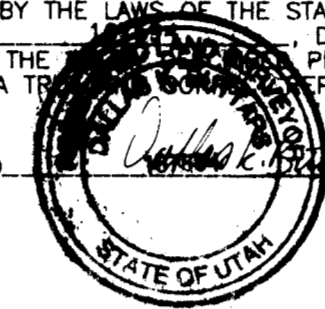


SCALE = 1" = 40'
○ = 5/8" X 24" LENGTH REBAR
W/CAP STAMPED 167504



•SURVEYOR'S CERTIFICATE•

I, DALLAS K. BUTTARS, A PROFESSIONAL LICENSED LAND SURVEYOR AS PRESCRIBED BY THE LAWS OF THE STATE OF UTAH AND HOLDING LICENSE NUMBER _____, DO HEREBY CERTIFY THAT I MADE A SURVEY OF THE _____ PROPERTY AND THE PLAT HEREON IS A TRUE REPRESENTATION OF SAID SURVEY.



DATE: 4-4-97 SIGNED: _____

•BOUNDARY DESCRIPTION•

ALL OF LOT 72, MARGRETTA SUBDIVISION NO. 3 ROY CITY, WEBER COUNTY, UTAH, ACCORDING TO THE OFFICIAL PLAT THEREOF, ON FILE AND OF RECORD IN WEBER COUNTY RECORDERS OFFICE.

•NARRATIVE•

THE PURPOSE OF THIS SURVEY WAS TO ESTABLISH THE BOUNDARY OF LOT 72. EXISTING IMPROVEMENTS AND ORIGINAL NAILS IN THE CURB WERE USED TO ESTABLISH THIS BOUNDARY.

LANDMARK SURVEYING
A COMPLETE SURVEYING SERVICE

2485 GRANT AVE. SUITE 308 OGDEN, UTAH 84401
PH. 827-4014

CLIENT: JOAN & ROBERT OWEN

LOCATION: A PART OF THE N.E. 1/4 OF SECTION 15, T.5N., R.2W., S.L.B.&M.

SURVEYED:

REVISIONS:	DRAWN BY: <i>[Signature]</i>
	CHECKED BY: D. BUTTARS
	DATE: 3-14-97
	FILE: 1830FIN.DWG