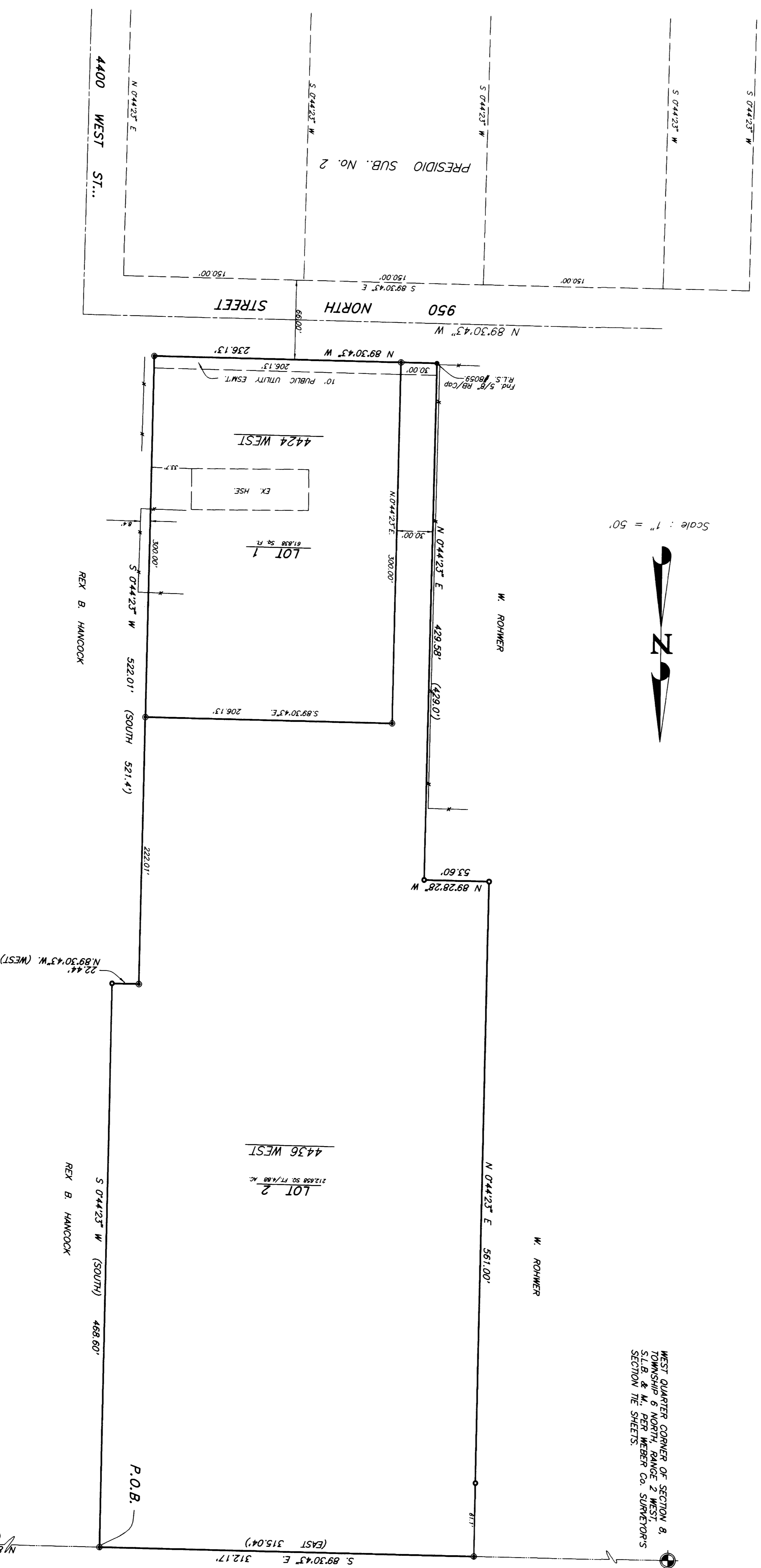


PARKE PLACE
A PART OF THE NE 1/4 OF SECTION 8,
T. 6 N., R. 2 W., S18&M,
WEBER COUNTY, UTAH
JUNE 12, 1997

Scale: 1" = 50'



WEST QUARTER CORNER OF SECTION 8,
TOWNSHIP 6 NORTH, RANGE 2 WEST,
S18&M, PER WEBER CO. SURVEYOR'S
SECTION 18 SHEETS.

OWNERS DEDICATION

WE, THE UNDERSIGNED OWNERS OF THE HEREIN DESCRIBED TRACT OF LAND, OR ANY PART THEREOF, DO HEREBY DEDICATE AND STREETS AS SHOWN ON THE MAP...

ACKNOWLEDGEMENT

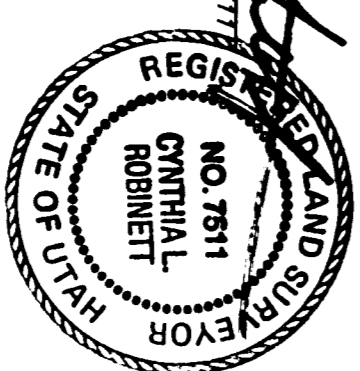
STATE OF UTAH
COUNTY OF WEBER
PERSONALLY APPEARED
AND
SIGNED) OF THE ABOVE INSTRUMENT, AND DULY ACKNOWLEDGED TO ME THAT HEY...

WEBER COUNTY ATTORNEY

BOUNDARY DESCRIPTION
A PART OF THE NORTHEAST QUARTER OF SECTION 8, TOWNSHIP 6 NORTH, RANGE 2 WEST...

SURVEYOR'S CERTIFICATE
I CERTIFY AND SUBSCRIBE THAT I AM A REGISTERED LAND SURVEYOR...

NARRATIVE
I HAVE EXAMINED THE RECORDS OF THE COUNTY CLERK OF WEBER COUNTY, UTAH...



RECEIVED

JUN 23 1997

Webber County Surveyor

COUNTY RECORDER

FILED FOR RECORD AND RECORD

LEGEND

- () DISTANCE AND OR BEARING PER DEED OR PLAT.
NO PARTIERSHIP IS REQUIRED DISTANCE OR POINTED PLAT OR DEED BEARING TO STATE PLANE AND BEARING.
EXISTING FENCES.
FOUND 3/4" REBAR W/ CAP R.L.S. #8038.
SET 1/2" REBAR W/ C.L.S. CAP.

NOTE

AGRICULTURE IS THE PREFERRED USE IN THE AGRICULTURAL ZONES.
AGRICULTURAL OPERATIONS AS SPECIFIED IN THE ZONING ORDINANCE FOR A...

WEBER-MORGAN HEALTH DEPARTMENT

I HEREBY CERTIFY THAT THE SOILS, PERCOLATION RATES AND SITE CONDITIONS FOR THIS SUBDIVISION HAVE BEEN INVESTIGATED BY THIS OFFICE AND ARE APPROVED FOR ON-SITE WASTEWATER DISPOSAL SYSTEMS.

WEBER COUNTY ACCEPTANCE

THIS IS TO CERTIFY THAT THE SUBDIVISION PLAT THE SEVERAL OF WHICH ARE HEREBY APPROVED AND ACCEPTED BY THE COMMISSIONERS OF WEBER COUNTY, UTAH THIS...

WEBER COUNTY SURVEYOR

I HEREBY CERTIFY THAT THE LINE OF SURVEY OF THE LANDS DESCRIBED IN THE FOREGOING PLAT WAS DULY APPROVED BY THE COMMISSIONERS OF WEBER COUNTY, UTAH THIS...

WEBER COUNTY ENGINEER

I HEREBY CERTIFY THAT THE SUBDIVISION PLAT WAS DULY APPROVED BY THE COMMISSIONERS OF WEBER COUNTY, UTAH THIS...

WEBER COUNTY PLANNING COMMISSION APPROVAL

THIS IS TO CERTIFY THAT THE SUBDIVISION PLAT WAS DULY APPROVED BY THE COMMISSIONERS OF WEBER COUNTY, UTAH THIS...

CONSTRUCTION & LAND SURVEYORS
670 CANYON ROAD
CANYON UTAH 84004

DIRECTOR WEBER-MORGAN HEALTH DEPARTMENT

COMMISSIONERS OF WEBER COUNTY

COMMISSIONERS OF WEBER COUNTY

Table with columns for COUNTY RECORDER, FILED FOR RECORD AND RECORD, IN BOOK, PAGE, and DATE.