

DRAWING NUMBER

001652

DRAWING NUMBER

001652

DRAWING NUMBER

001652

DRAWING NUMBER

001652

NE 1/4 SECTION 17 T.5N., R.1W. S.L.B. & M.

NE Corner Section 17
T5N, R1W, S.L.B. & M.
Found 3" BC Monument
Marked Weber County 1960...

SURVEYOR'S CERTIFICATE

I, ROBIN ERIC BEASLEY, DO HEREBY CERTIFY THAT I AM A REGISTERED LAND SURVEYOR, AND THAT I HOLD CERTIFICATE NUMBER 172861, AS PRESCRIBED BY THE LAWS OF THE STATE OF UTAH, AND THAT UNDER MY DIRECTION A SURVEY HAS BEEN MADE OF THE FOLLOWING DESCRIBED LEASE PARCEL

BEGINNING AT A POINT 830.75 FEET NO°52'41"E ALONG THE CORNER OF SECTION 17, TOWNSHIP 5 NORTH, RANGE 1 WEST, SALT LAKE BASE AND MERIDIAN, AND RUNNING THENCE N51°53'48"W 37.50 FEET; THENCE N38°06'12"E 23.00 FEET; THENCE S51°53'48"E 37.50 FEET; THENCE S38°06'12"W 23.00 FEET TO THE POINT OF BEGINNING;
CONTAINING 863 SQ FT OR 0.020 ACRE

DATE: MAY 19, 1997

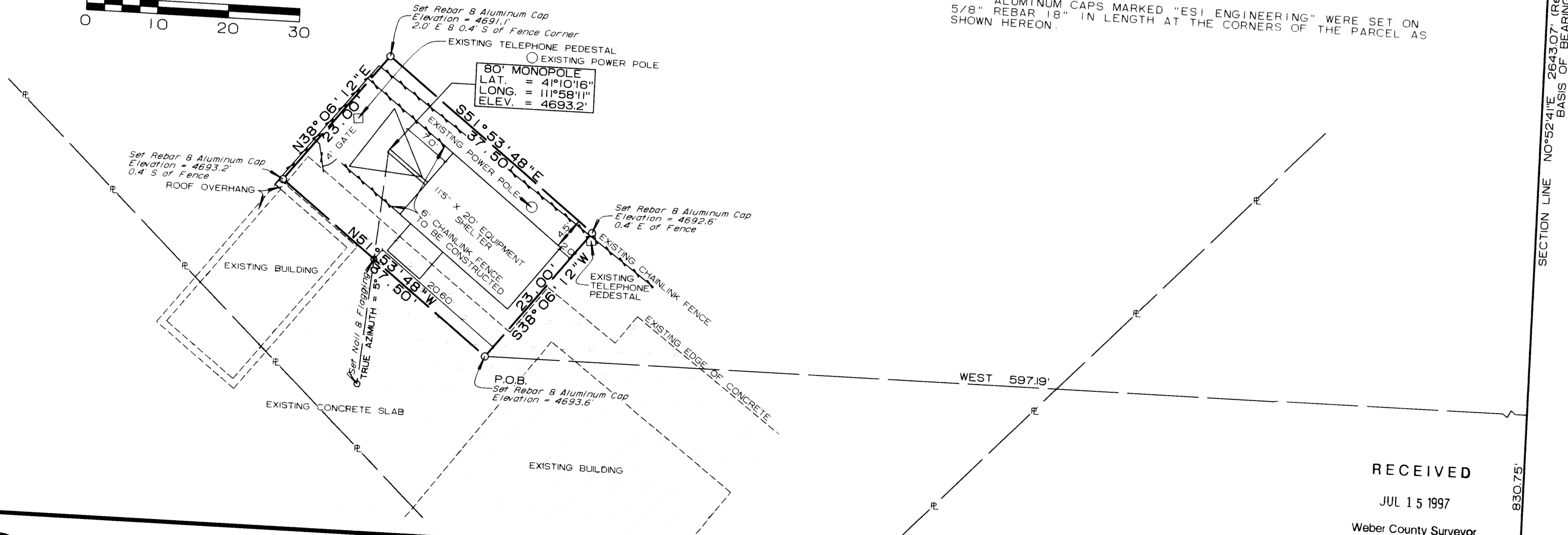
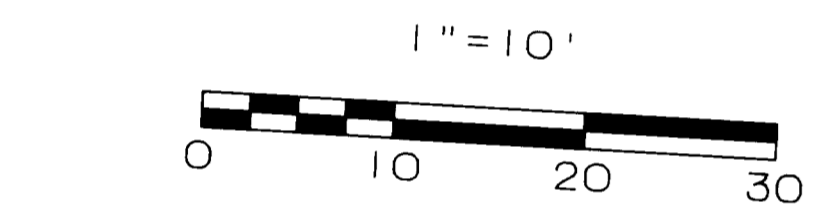
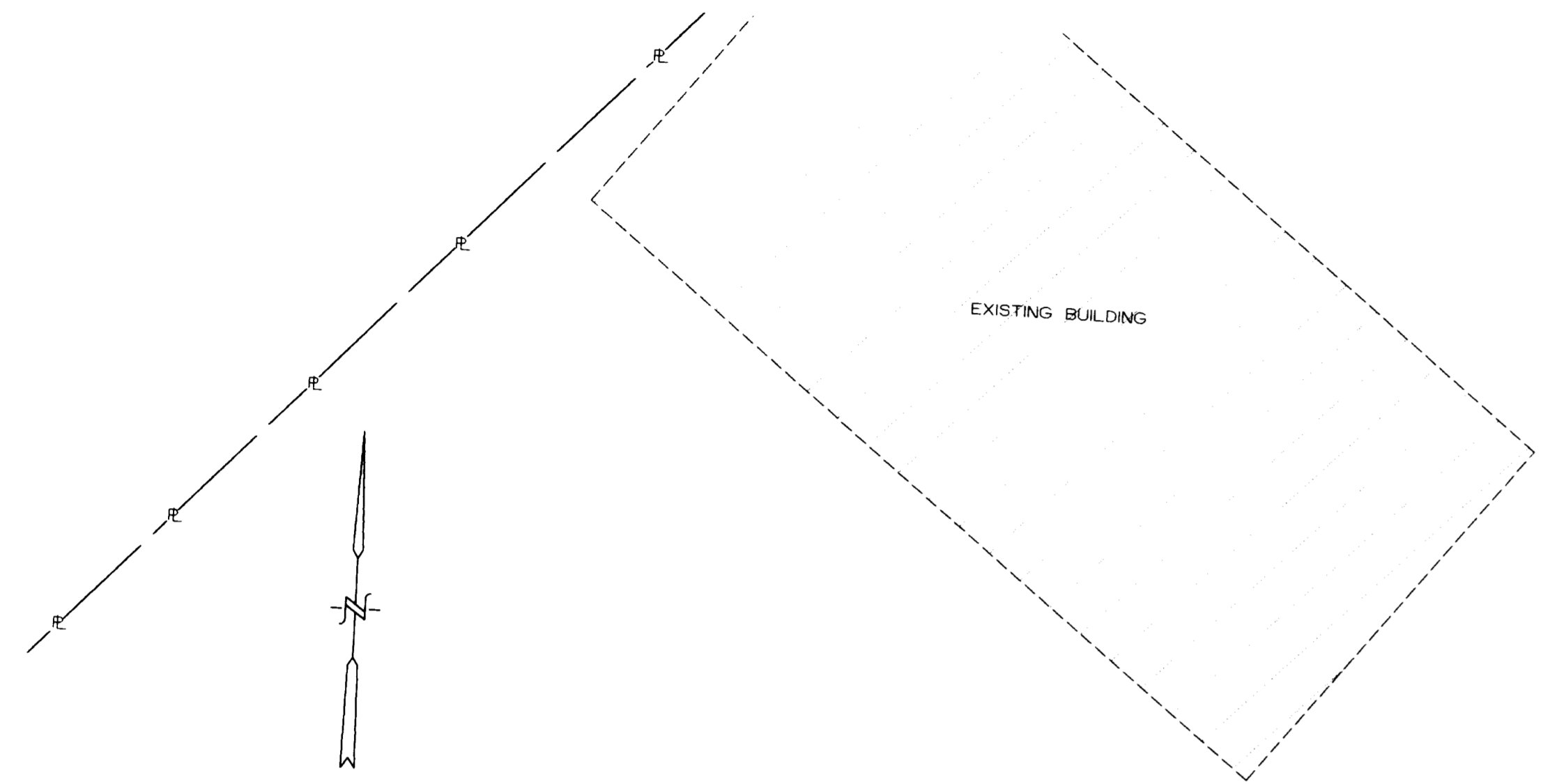
Robin E. Beasley
ROBIN E. BEASLEY

NARRATIVE

THE PURPOSE OF THIS SURVEY WAS TO ESTABLISH THE CORNERS OF THE ABOVE DESCRIBED LEASE PARCEL FOR CONSTRUCTION OF AN AT&T CELL SITE.

THE BASIS OF BEARING FOR THIS SURVEY IS NO°52'41"E ALONG THE SECTION LINE BETWEEN THE EAST QUARTER CORNER AND NORTHEAST CORNER OF SECTION 17. (WEBER COUNTY SURVEYOR'S OFFICE DATUM). THE LATITUDE AND LONGITUDE SHOWN ARE BASED ON THE NORTH AMERICAN DATUM OF 1927. THE TRUE AZIMUTH SHOWN IS BASED ON GPS OBSERVATION. ELEVATIONS ARE BASED ON AN ELEVATION OF 4752.05 FEET ON WEBER COUNTY BENCHMARK "WC-HARRISON BLVD".

5/8" ALUMINUM CAPS MARKED "ESI ENGINEERING" WERE SET ON 5/8" REBAR 18" IN LENGTH AT THE CORNERS OF THE PARCEL AS SHOWN HEREON.



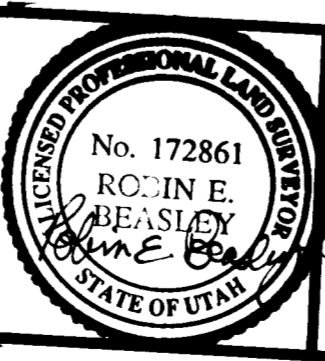
SECTION LINE NO°52'41"E 2643.07' (Record & Measured)

RECEIVED
JUL 15 1997
Weber County Surveyor

E Quarter Corner Sec 17
T5N, R1W, S.L.B. & M.
Found 3" BC Monument
Marked Weber County 1963...

AT&T
5 Triad Center, Suite 400
55 North 300 West
Salt Lake City, Utah 84180
AT&T Wireless Services

SITE SURVEY
SOUTH OGDEN CELL SITE
5100 SOUTH WASHINGTON BLVD
WASHINGTON TERRACE, UTAH



ESI ENGINEERING
CONSULTING ENGINEERS AND LAND SURVEYORS
3500 SOUTH MAIN STREET SUITE 206
SALT LAKE CITY, UTAH 84115
(801) 263-1752

SHEET 1
OF 1
PROJECT NO.
97-106S