

DRAWING NUMBER  
001660

PLAN HOLD CORPORATION • IRVINE, CALIFORNIA  
REORDER BY NUMBER 075AR

DRAWING NUMBER  
001660

PLAN HOLD CORPORATION • IRVINE, CALIFORNIA  
REORDER BY NUMBER 075AR

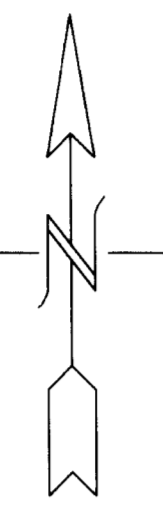
DRAWING NUMBER  
001660

PLAN HOLD CORPORATION • IRVINE, CALIFORNIA  
REORDER BY NUMBER 075AR

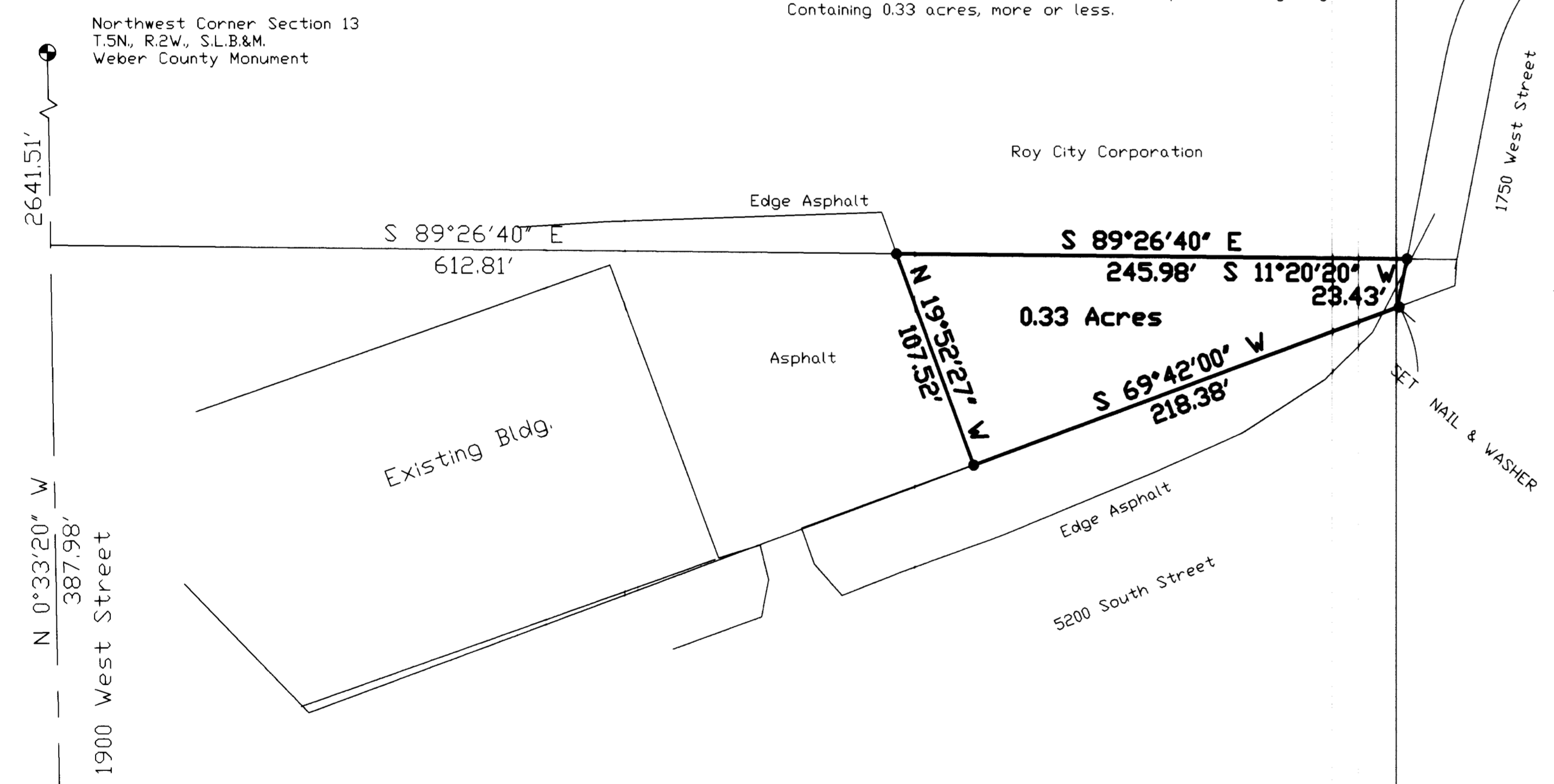
DRAWING NUMBER  
001660

PLAN HOLD CORPORATION • IRVINE, CALIFORNIA  
REORDER BY NUMBER 075AR

Cap Detail  
LEGEND: ● DENOTES A SET #5 CAPPED REBAR, 24" LONG



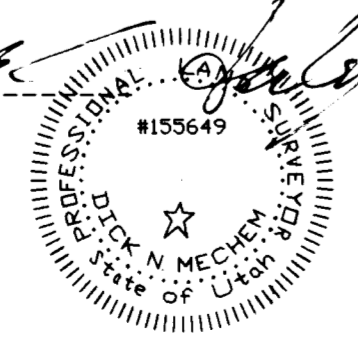
Property Description  
Being a part of the Northwest Quarter of Section 11, Township 5 North, Range 2 West, Salt Lake Base and Meridian, and described as follows:  
Beginning at a point on the south line of the Roy City Corporation property, said point being N. 0°33'20"E., 387.98 feet and S.89°26'40"E., 612.81 feet from the Southwest corner of said Northwest Quarter, and running:  
S.89°26'40"E., along said south line, 245.98 feet to the west right of way line of 1750 West Street;  
Thence, S.11°20'20"W., along said west line, 23.43 feet, to the North line of 5200 South Street;  
Thence, S.69°42'00"W., along said north line, 218.38 feet;  
Thence, N.19°52'27"W., 107.52 feet to the point of beginning.  
Containing 0.33 acres, more or less.



Surveyor's Certificate

I, Dick N. Mechen, Utah Professional Land Surveyor number 155649 as prescribed by the laws of the state of Utah, do hereby certify that this plat was prepared from a survey made on the ground by me, at the request of John Fitzgerald and on behalf of Mountain West Professional Land Surveyors, L.L.C., and is true and correct to the best of my knowledge and belief.

*Dick N. Mechen*  
Dick N. Mechen



Narrative of Survey

The purpose of this survey was to create a description for a parcel of land being retained by Mr. Fitzgerald. A survey of the entire Fitzgerald parcel performed in 1990 by Mountain West Professional Land Surveyors, P.C. was used as a base for this survey. The Right of Way of 1750 West Street, included in the original description, has been omitted from this description in an effort to define the parcel more accurately.

West Quarter Corner Section 13  
T.5N., R.2W., S.L.B.&M.  
Weber County Monument

RECEIVED  
AUG 01 1997  
Weber County Surveyor

RECORD OF SURVEY  
for  
JOHN FITZGERALD  
Located In The Northwest One-Quarter Of Section 13,  
Township 5 North, Range 2 West, S.L.B.&M.  
Date April 1997 No. 90-1024-97 Draw P.J.W. Ckd DNM  
MountainWest Professional Land Surveyors, L.L.C.  
1825 W. 4400 S. PO Box 207  
Roy, Utah 84067  
Phone: (801) 731-5330 Fax: (801) 731-5331

001660

001660