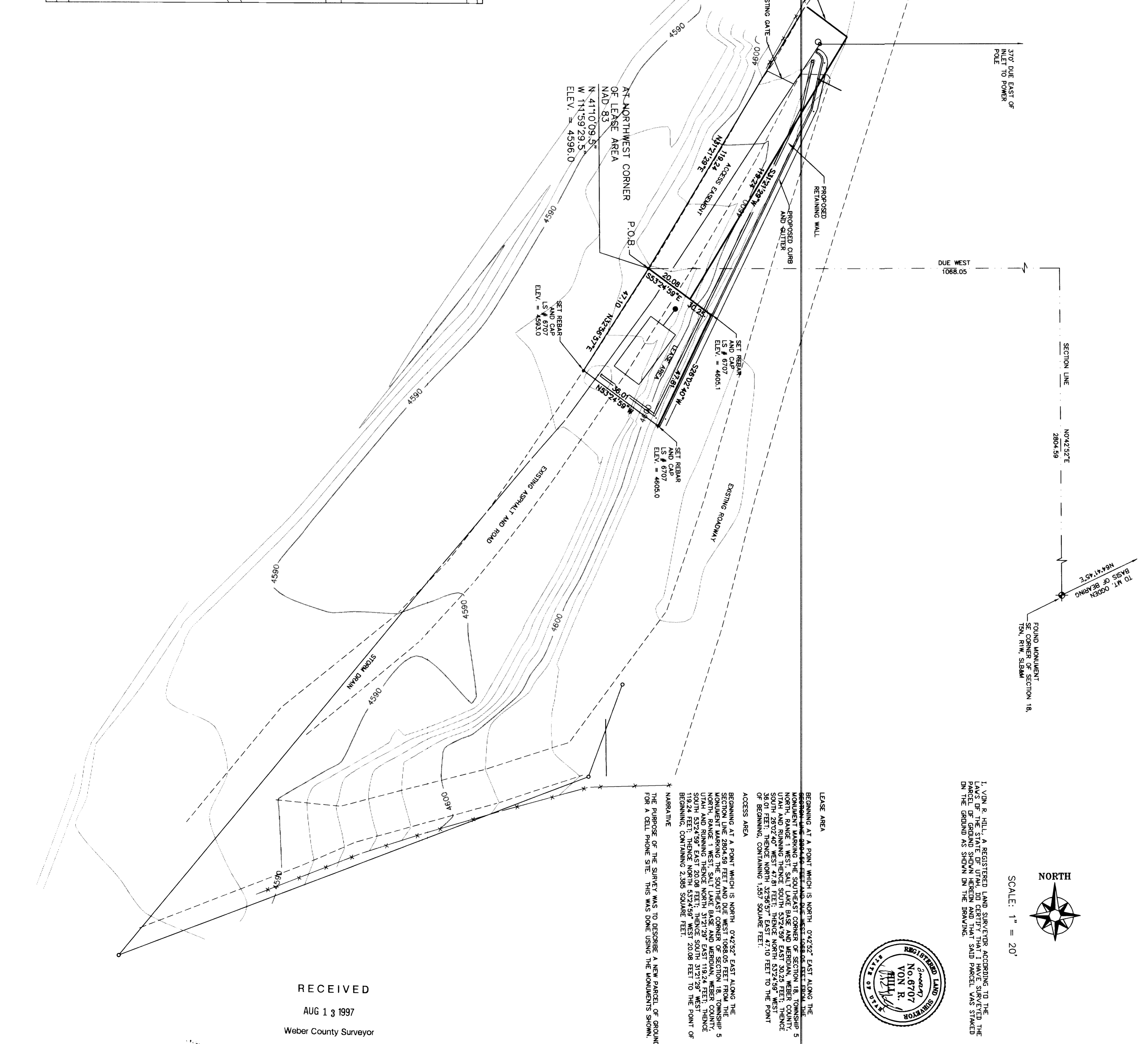
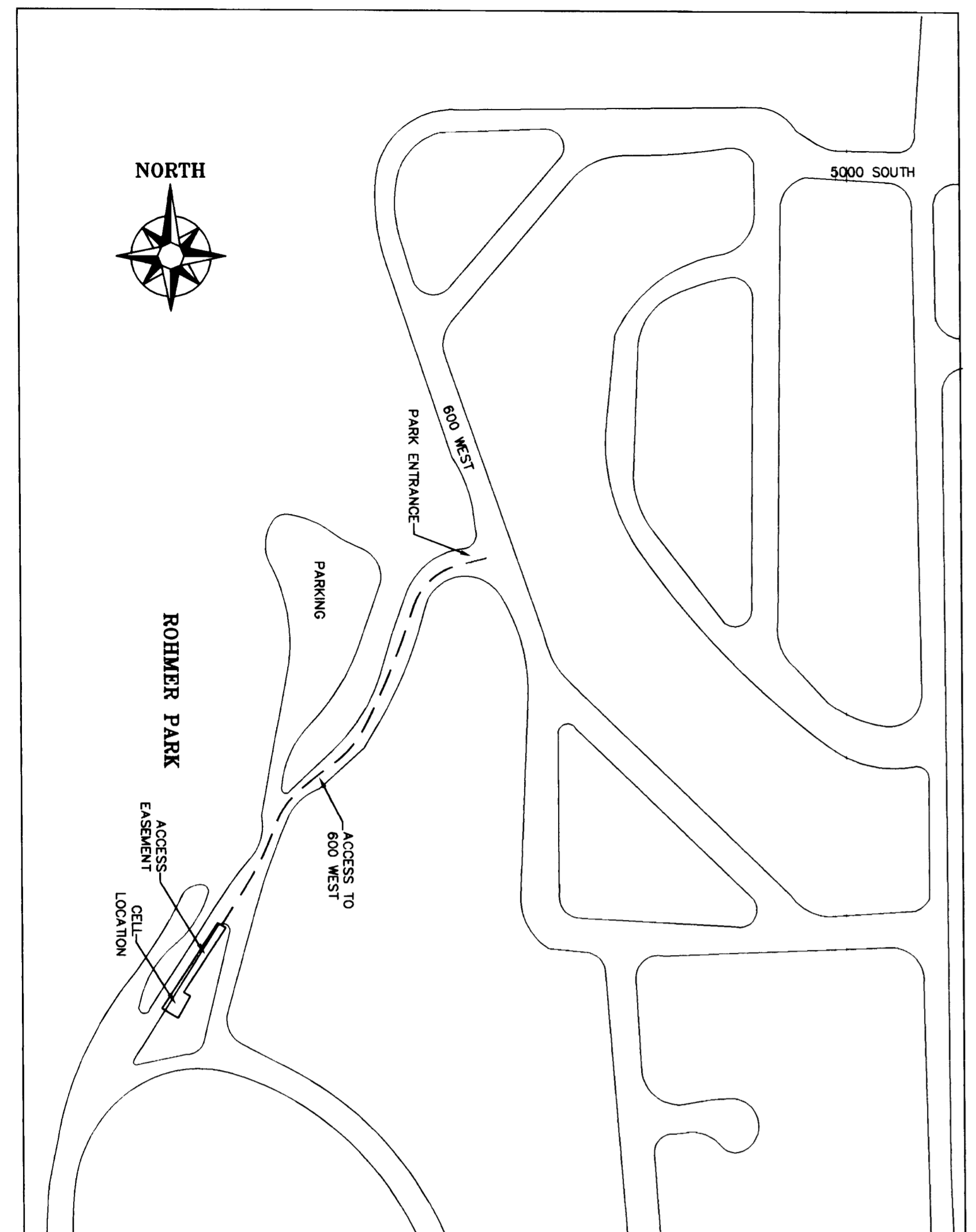


PLAN HOLD CORPORATION • IRVINE, CALIFORNIA  
REORDER BY NUMBER 07548  
POSITION TITLE OF PRINT ON THE LINE

PLAN HOLD CORPORATION • IRVINE, CALIFORNIA  
REORDER BY NUMBER 07548  
POSITION TITLE OF PRINT ON THE LINE

PLAN HOLD CORPORATION • IRVINE, CALIFORNIA  
REORDER BY NUMBER 07548  
POSITION TITLE OF PRINT ON THE LINE

PLAN HOLD CORPORATION • IRVINE, CALIFORNIA  
REORDER BY NUMBER 07548  
POSITION TITLE OF PRINT ON THE LINE



RECEIVED  
AUG 13 1997  
Weber County Surveyor

I, JOHN B. HILL, A REGISTERED LAND SURVEYOR ACCORDING TO THE LAWS OF THE STATE OF UTAH, DO CERTIFY THAT I HAVE SURVEYED THE DUMP AND UTILITY LINES SHOWN ON THIS PLAN, AND THAT THE SHOWN ARE THE TRUE AND CORRECT LOCATIONS OF THE DUMP AND UTILITY LINES AS SHOWN ON THE DRAWING.



SCALE: 1" = 20'

LEASE AREA  
BEGINNING AT A POINT WHICH IS NORTH, 07°29' EAST ALONG THE WEST LINE OF SECTION 18, T11N, R11W, SLB&M, THE DISTANCE OF 200.00 FEET TO POINT A; THENCE NORTH, 18°24' WEST ALONG THE WEST LINE OF SECTION 18, T11N, R11W, SLB&M, THE DISTANCE OF 182.24 FEET TO POINT B; THENCE SOUTH, 82°54' WEST ALONG THE WEST LINE OF SECTION 18, T11N, R11W, SLB&M, THE DISTANCE OF 182.24 FEET TO POINT C; THENCE SOUTH, 82°54' WEST ALONG THE WEST LINE OF SECTION 18, T11N, R11W, SLB&M, THE DISTANCE OF 182.24 FEET TO POINT D; THENCE SOUTH, 82°54' WEST ALONG THE WEST LINE OF SECTION 18, T11N, R11W, SLB&M, THE DISTANCE OF 182.24 FEET TO POINT E; THENCE SOUTH, 82°54' WEST ALONG THE WEST LINE OF SECTION 18, T11N, R11W, SLB&M, THE DISTANCE OF 182.24 FEET TO POINT F; THENCE SOUTH, 82°54' WEST ALONG THE WEST LINE OF SECTION 18, T11N, R11W, SLB&M, THE DISTANCE OF 182.24 FEET TO POINT G; THENCE SOUTH, 82°54' WEST ALONG THE WEST LINE OF SECTION 18, T11N, R11W, SLB&M, THE DISTANCE OF 182.24 FEET TO POINT H; THENCE SOUTH, 82°54' WEST ALONG THE WEST LINE OF SECTION 18, T11N, R11W, SLB&M, THE DISTANCE OF 182.24 FEET TO POINT I; THENCE SOUTH, 82°54' WEST ALONG THE WEST LINE OF SECTION 18, T11N, R11W, SLB&M, THE DISTANCE OF 182.24 FEET TO POINT J; THENCE SOUTH, 82°54' WEST ALONG THE WEST LINE OF SECTION 18, T11N, R11W, SLB&M, THE DISTANCE OF 182.24 FEET TO POINT K; THENCE SOUTH, 82°54' WEST ALONG THE WEST LINE OF SECTION 18, T11N, R11W, SLB&M, THE DISTANCE OF 182.24 FEET TO POINT L; THENCE SOUTH, 82°54' WEST ALONG THE WEST LINE OF SECTION 18, T11N, R11W, SLB&M, THE DISTANCE OF 182.24 FEET TO POINT M; THENCE SOUTH, 82°54' WEST ALONG THE WEST LINE OF SECTION 18, T11N, R11W, SLB&M, THE DISTANCE OF 182.24 FEET TO POINT N; THENCE SOUTH, 82°54' WEST ALONG THE WEST LINE OF SECTION 18, T11N, R11W, SLB&M, THE DISTANCE OF 182.24 FEET TO POINT O; THENCE SOUTH, 82°54' WEST ALONG THE WEST LINE OF SECTION 18, T11N, R11W, SLB&M, THE DISTANCE OF 182.24 FEET TO POINT P; THENCE SOUTH, 82°54' WEST ALONG THE WEST LINE OF SECTION 18, T11N, R11W, SLB&M, THE DISTANCE OF 182.24 FEET TO POINT Q; THENCE SOUTH, 82°54' WEST ALONG THE WEST LINE OF SECTION 18, T11N, R11W, SLB&M, THE DISTANCE OF 182.24 FEET TO POINT R; THENCE SOUTH, 82°54' WEST ALONG THE WEST LINE OF SECTION 18, T11N, R11W, SLB&M, THE DISTANCE OF 182.24 FEET TO POINT S; THENCE SOUTH, 82°54' WEST ALONG THE WEST LINE OF SECTION 18, T11N, R11W, SLB&M, THE DISTANCE OF 182.24 FEET TO POINT T; THENCE SOUTH, 82°54' WEST ALONG THE WEST LINE OF SECTION 18, T11N, R11W, SLB&M, THE DISTANCE OF 182.24 FEET TO POINT U; THENCE SOUTH, 82°54' WEST ALONG THE WEST LINE OF SECTION 18, T11N, R11W, SLB&M, THE DISTANCE OF 182.24 FEET TO POINT V; THENCE SOUTH, 82°54' WEST ALONG THE WEST LINE OF SECTION 18, T11N, R11W, SLB&M, THE DISTANCE OF 182.24 FEET TO POINT W; THENCE SOUTH, 82°54' WEST ALONG THE WEST LINE OF SECTION 18, T11N, R11W, SLB&M, THE DISTANCE OF 182.24 FEET TO POINT X; THENCE SOUTH, 82°54' WEST ALONG THE WEST LINE OF SECTION 18, T11N, R11W, SLB&M, THE DISTANCE OF 182.24 FEET TO POINT Y; THENCE SOUTH, 82°54' WEST ALONG THE WEST LINE OF SECTION 18, T11N, R11W, SLB&M, THE DISTANCE OF 182.24 FEET TO POINT Z; THENCE SOUTH, 82°54' WEST ALONG THE WEST LINE OF SECTION 18, T11N, R11W, SLB&M, THE DISTANCE OF 182.24 FEET TO POINT A.

DATE	3/8/97
BY	J.B.H.
DATE	3/8/97
BY	J.B.H.
DATE	
BY	

PREPARED FOR:  
AIRTOUCH  
SAL-RIVERDALE  
5300 SOUTH 700 WEST  
WASHINGTON TERRACE, UTAH  
LOCATED IN THE SE 1/4 OF SECTION 18, TSN, R1W, SLB&M

**HJA Hill, Jamison and Associates, Inc.**  
Engineering and Surveying  
181 North 200 West, Bountiful, Utah 84010 (801)298-2236