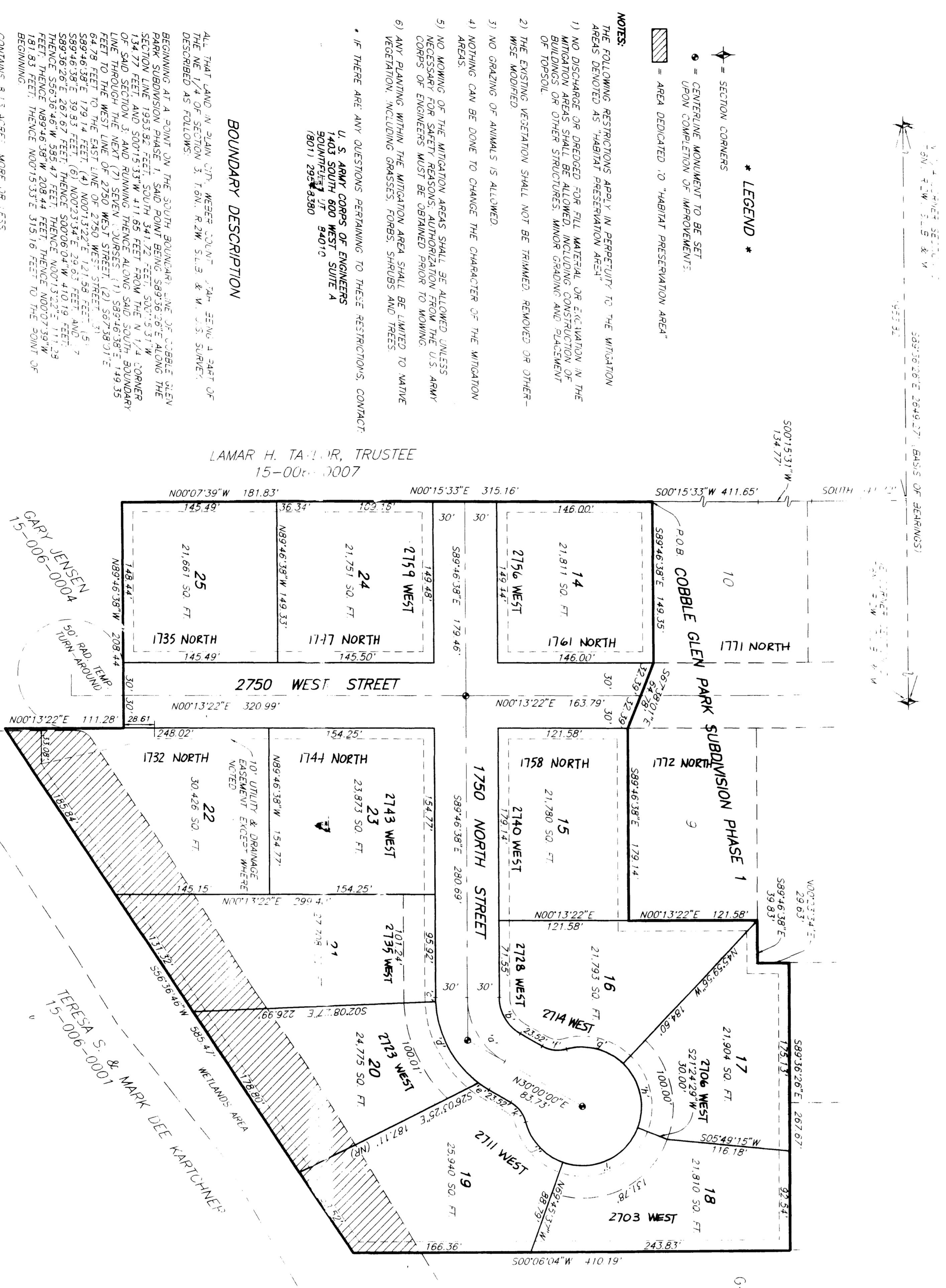


43-14

# COBBLE GLEN PARK SUBDIVISION PHASE 2

PART OF THE NE 1/4 OF SECTION 3, T. 6N., R. 2W., S.L.B. & M., U.S. SURVEY PLAIN CITY, WEBER COUNTY, UTAH AUGUST, 1996



### OWNER'S DEDICATION AND CERTIFICATION

WE, THE UNDERSIGNED OWNERS OF THE HEREBY-DESCRIBED TRACT OF LAND, HEREBY SET APART AND SUBDIVIDE THE SAME INTO LOTS AND STREETS, AS SHOWN ON THIS PLAN, THESE LOTS AND STREETS TO REMAIN PUBLIC UTILITY RIGHTS AND RIGHTS OF EGRESS AND ACCESS TO THE PUBLIC THROUGHOUT THE TRACT. ALL THOSE PARTS OR PORTIONS OF SAID TRACT OF LAND DESIGNATED AS STREETS, STAIRS, STAIRWAYS, WALKWAYS AND SIDEWALKS SHALL BE OPEN AND AVAILABLE TO THE PUBLIC THROUGHOUT THE TRACT. THOSE CERTAIN STRIPS AS ESSENTIALS FOR PUBLIC UTILITY AND DRAINAGE PURPOSES, AS SHOWN HERON, OF THE SAME TO PUBLIC SERVICE LINES AND DRAINAGE AS MAY BE AUTHORIZED BY THE BOARD OF PUBLIC UTILITIES.

### ACKNOWLEDGEMENT

I, TERESA S. & MARK DEE KARTCHNER, PERSONALLY APPEARED ON THE DAY OF AUGUST, 1996, AT THE PLACE AND BEFORE ME, THE UNDERSIGNED NOTARY PUBLIC, IN FULL KNOWLEDGE AND SUFFICIENT MIND, AND BEING OF THE SOUND MIND AND LEGAL AGE, TO EXECUTE THE FOREGOING INSTRUMENT, AND I HEREBY CERTIFY THAT THE SIGNATURE AND ACKNOWLEDGEMENT TO SAID INSTRUMENT WERE MADE VOLUNTARILY AND FOR THE PURPOSES THEREIN MENTIONED.

STATE OF UTAH }  
COUNTY OF WEBER }  
DAY OF SEPTEMBER, 1996 - PERSONALLY APPEARED ON THE DAY OF AUGUST, 1996, AT THE PLACE AND BEFORE ME, THE UNDERSIGNED NOTARY PUBLIC, IN FULL KNOWLEDGE AND SUFFICIENT MIND, AND BEING OF THE SOUND MIND AND LEGAL AGE, TO EXECUTE THE FOREGOING INSTRUMENT, AND I HEREBY CERTIFY THAT THE SIGNATURE AND ACKNOWLEDGEMENT TO SAID INSTRUMENT WERE MADE VOLUNTARILY AND FOR THE PURPOSES THEREIN MENTIONED.

#### \* CURVE DATA \*

CHORD BEARING	CHORD LENGTH, DE. 1/4	ARC LENGTH, DE. 1/4	ARC BEARING	CHORD ANGLE
N007°07'39"W	40.96	60.7172	138.97	40.00
S89°46'38"E	149.88	173.121	119.10	40.00
N007°15'33"E	411.65	612.21	119.10	40.00
N001°15'33"E	315.16	478.57	119.10	40.00
S00°15'33"W	411.65	612.21	119.10	40.00
N007°15'33"E	315.16	478.57	119.10	40.00
N007°07'39"W	181.83	277.11	119.10	40.00
N007°15'33"E	315.16	478.57	119.10	40.00
S00°15'33"W	411.65	612.21	119.10	40.00
N007°15'33"E	315.16	478.57	119.10	40.00
N007°07'39"W	181.83	277.11	119.10	40.00
N007°15'33"E	315.16	478.57	119.10	40.00
S00°15'33"W	411.65	612.21	119.10	40.00
N007°15'33"E	315.16	478.57	119.10	40.00
N007°07'39"W	181.83	277.11	119.10	40.00
N007°15'33"E	315.16	478.57	119.10	40.00
S00°15'33"W	411.65	612.21	119.10	40.00
N007°15'33"E	315.16	478.57	119.10	40.00
N007°07'39"W	181.83	277.11	119.10	40.00
N007°15'33"E	315.16	478.57	119.10	40.00
S00°15'33"W	411.65	612.21	119.10	40.00
N007°15'33"E	315.16	478.57	119.10	40.00
N007°07'39"W	181.83	277.11	119.10	40.00
N007°15'33"E	315.16	478.57	119.10	40.00
S00°15'33"W	411.65	612.21	119.10	40.00

### BASIS OF BEARINGS

THE BASIS OF BEARINGS FOR THIS PLAN IS THE UTM COORDINATE SYSTEM, THE NE 1/4 CORNER AND THE NORTH 1/4 CORNER OF SECTION 3, T. 6N., R. 2W., S.L.B. & M., U.S. SURVEY, AS SHOWN HERON AS S89°46'38"E.

APPROVED BY THE PLANNING COMMISSION ON THE DAY OF SEPTEMBER, 1996  
TERESA S. & MARK DEE KARTCHNER CHAIRMAN

APPROVED BY THE PLANNING COMMISSION ON THE DAY OF SEPTEMBER, 1996  
TERESA S. & MARK DEE KARTCHNER CHAIRMAN

APPROVED BY THE PLANNING COMMISSION ON THE DAY OF SEPTEMBER, 1996  
TERESA S. & MARK DEE KARTCHNER CHAIRMAN

APPROVED BY THE PLANNING COMMISSION ON THE DAY OF SEPTEMBER, 1996  
TERESA S. & MARK DEE KARTCHNER CHAIRMAN

APPROVED BY THE PLANNING COMMISSION ON THE DAY OF SEPTEMBER, 1996  
TERESA S. & MARK DEE KARTCHNER CHAIRMAN

APPROVED BY THE PLANNING COMMISSION ON THE DAY OF SEPTEMBER, 1996  
TERESA S. & MARK DEE KARTCHNER CHAIRMAN

APPROVED BY THE PLANNING COMMISSION ON THE DAY OF SEPTEMBER, 1996  
TERESA S. & MARK DEE KARTCHNER CHAIRMAN

APPROVED BY THE PLANNING COMMISSION ON THE DAY OF SEPTEMBER, 1996  
TERESA S. & MARK DEE KARTCHNER CHAIRMAN

PLANNING COMMISSION

PLANNING COMMISSION

PLANNING COMMISSION

PLANNING COMMISSION

PLANNING COMMISSION

PLANNING COMMISSION

PLANNING COMMISSION

PLANNING COMMISSION