

11-174

THE HAWSTEAD SUBDIVISION PHASE-8

PART OF THE NW 1/4 OF SECTION 7, T5N., R2W, S1B&M, U.S. SURVEY
12, T5N., R2W, S1B&M, U.S. SURVEY
RIVERDALE CITY, WEBER COUNTY, UTAH
NOVEMBER, 1996

NARRATIVE

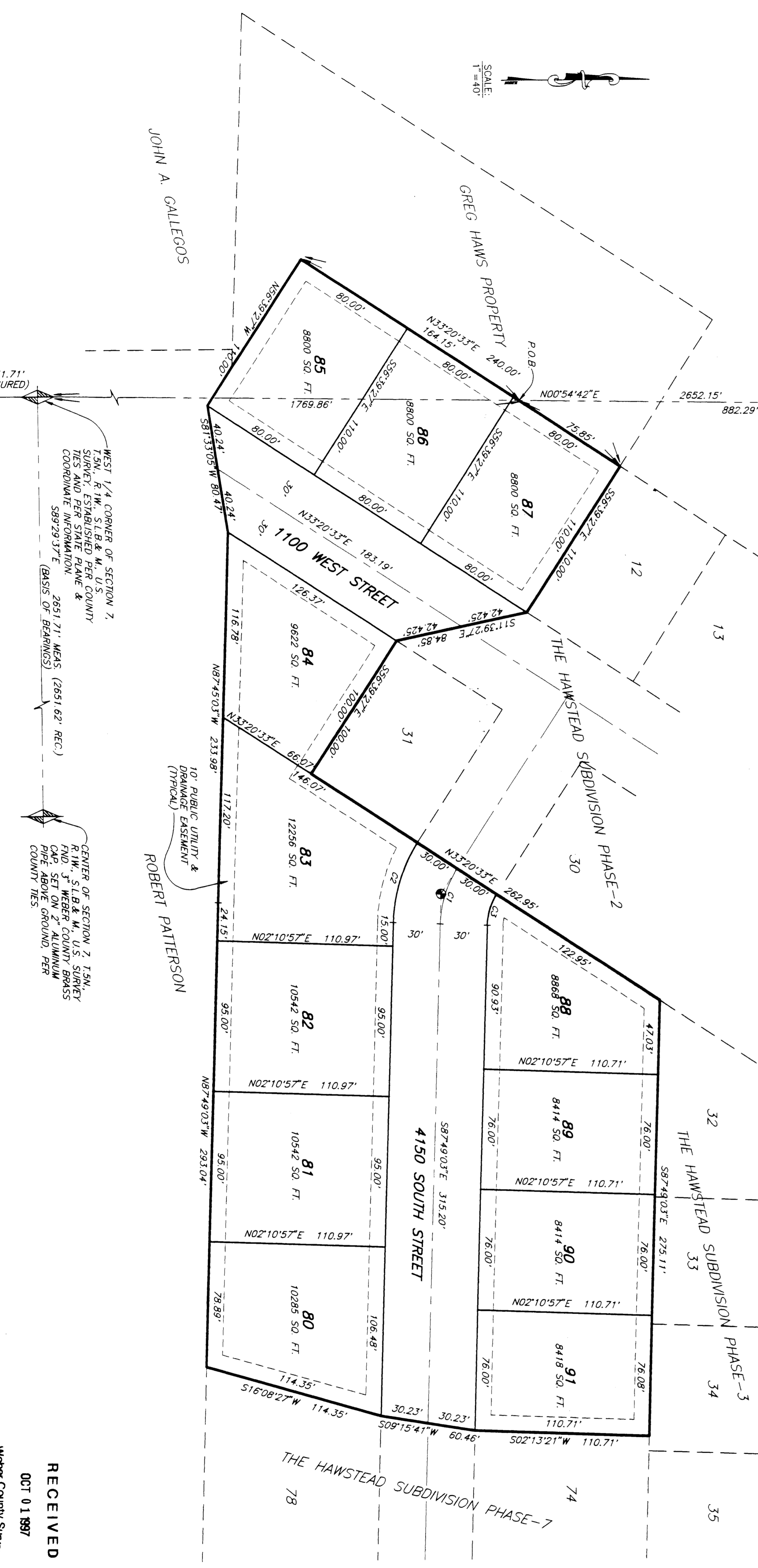
THE PURPOSE OF THIS PLAT IS TO SUBDIVIDE THIS PROPERTY INTO LOTS AND STREETS. THE BOUNDARY LINES WERE ESTABLISHED BY A SURVEY THAT WAS PERFORMED ON THE GROUND. MONUMENTS, CORNERS AND BEAR-LOTT CORNERS ARE TO BE MARKED WITH A 5/8" REBAR AND CAP MARKED "REBAR & BEAR". ALL FRONT LOT CORNERS ARE TO BE MARKED WITH A T.M.C. SET IN THE TOP OF CURB ON A LINE EXTENSION OF THE LOT BOUNDARIES.

BASIS OF BEARINGS

THE BASIS OF BEARINGS FOR THIS PLAT IS THE UTM COORDINATE SYSTEM 1987 NORTH ZONE. AS DETERMINED LOCALLY BY THE LINE BETWEEN THE W 1/4 CORNER AND THE NE 1/4 CORNER OF SECTION 7, T5N., R2W, S1B&M, U.S. SURVEY, SHOWN HEREON AS S8929.37'E.

BOUNDARY DESCRIPTION

PART OF THE NW 1/4 OF SECTION 7, T5N., R2W, S1B&M, U.S. SURVEY, DESCRIBED AS FOLLOWS:
BEGINNING ON A POINT WHICH IS 1789.86 FEET FROM THE WEST 1/4 CORNER OF SAID SECTION 7 (BASIS OF BEARINGS BEING SAID S8929.37'E BETWEEN THE WEST 1/4 CORNER AND THE CENTER LINE OF THE HAWSTEAD SUBDIVISION PHASE-2, THENCE ALONG SAID SUBDIVISION THE FOLLOWING FOUR (4) COURSES: (1) S8629.27'E 1102.00 FEET; (2) S1530.27'E 84.85 FEET TO THE SOUTH LINE OF THE HAWSTEAD SUBDIVISION PHASE-2, THENCE ALONG SAID LINE S8749.03'E 275.11 FEET TO THE NW CORNER OF THE HAWSTEAD SUBDIVISION PHASE-2, THENCE (2) COURSES: (1) S0215.11'W 110.71 FEET; (2) S0915.41'W 60.46 FEET; AND (3) S1609.27'W 114.35 FEET, THENCE 60.46 FEET, THENCE S8733.05'W 80.47 FEET, THENCE N6519.27'W 110.00 FEET, THENCE N3320.33'E 164.15 FEET TO THE POINT OF BEGINNING. CONTAINS 3.35 ACRES.



WEST 1/4 CORNER OF SECTION 7, T5N., R2W, S1B&M, U.S. SURVEY, ESTABLISHED PER COUNTY TIES AND PERMANENT MONUMENT, 2651.71' MEAS. (BASIS OF BEARINGS) S8929.37'E

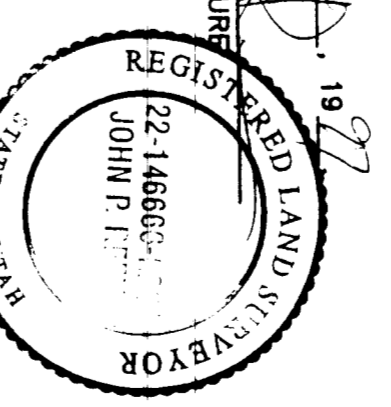
CENTER OF SECTION 7, T5N., R2W, S1B&M, U.S. SURVEY, CAP SET ON 2" ALUMINUM PIPE ABOVE GROUND PER COUNTY TIES

CURVE INFORMATION

CHORD	RADIUS	ANGULAR DISTANCE	CHORD BEARS	ARC LENGTH	AREA
1100	1100	180	1100	1100	1100
1100	1100	180	1100	1100	1100
1100	1100	180	1100	1100	1100

RECEIVED
OCT 0 1 1997
Weber County Survey

SURVEYOR'S CERTIFICATE
I, JOHN P. REEVE, A REGISTERED PROFESSIONAL SURVEYOR IN THE STATE OF UTAH, DO HEREBY CERTIFY THAT THIS PLAT OF THE HAWSTEAD SUBDIVISION PHASE-8, IN RIVERDALE CITY, UTAH, HAS BEEN DRAWN CORRECTLY TO THE BEST OF MY KNOWLEDGE AND BELIEF, AND THAT THE INFORMATION CONTAINED HEREIN DESCRIBED LANDS INCLUDED IN SAID SUBDIVISION, BASED UPON DATA COMPILED FROM RECORDS IN THE PUBLIC COUNTY RECORDS, IS TRUE AND CORRECT. I HEREBY CERTIFY THAT THE REQUIREMENTS OF ALL APPLICABLE STATUTES AND ORDINANCES OF SAID COUNTY AND SAID COUNTY COMMISSIONERS HAVE BEEN COMPLIED WITH, AND THE LOTS WHICH THEY ARE LOCATED.



OWNERS DEDICATION AND CERTIFICATION

SIGNED THIS 24 DAY OF January, 1997.
We, the undersigned, owners of the herein-described, into lots and streets, as shown on this plat, and hereby dedicate the same to the public, to be used as public thoroughfares as streets, and utility easements, strips, as shown hereon, for public utilities and drainage purposes, as shown hereon, for the same to be used for the installation, maintenance, and operation of public utilities, and for the same to be used for the same purposes as authorized by Riverdale City, with no buildings or structures being erected within such easements.

ACKNOWLEDGEMENT

ON THE 24 DAY OF January, 1997, PERSONALLY APPEARED before me the undersigned (SIGNED) OF THE ABOVE OWNERS, DEDICATING AND CERTIFYING, WHO, BEING BY ME DULY SWORN, DID ACKNOWLEDGE AND CERTIFICATION, WHO, BEING BY ME DULY SWORN, DID ACKNOWLEDGE THEREIN MENTIONED.

STATE OF UTAH
COUNTY OF _____
ACKNOWLEDGEMENT
COMMISSION EXPENSES _____ NOTARY PUBLIC _____
COMMISSION EXPENSES _____ NOTARY PUBLIC _____
ON THE 24 DAY OF January, 1997, PERSONALLY APPEARED before me the undersigned (SIGNED) OF THE ABOVE OWNERS, DEDICATING AND CERTIFYING, WHO, BEING BY ME DULY SWORN, DID ACKNOWLEDGE AND CERTIFICATION, WHO, BEING BY ME DULY SWORN, DID ACKNOWLEDGE THEREIN MENTIONED.



WEBER COUNTY RECORDER
ENTERED IN UNQUALIFIED PUBLIC RECORDS FOR RECORD AND RECORDED
FILED AT _____ OF THE OFFICE
RECORDS PAGE 13

RIVERDALE CITY PLANNING COMMISSION APPROVAL
THIS IS TO CERTIFY THAT THIS SUBDIVISION PLAT HAS BEEN APPROVED BY THE RIVERDALE CITY PLANNING COMMISSION ON THE 18 DAY OF January, 1997.
David Stead
CHAIRMAN, WEBER COUNTY PLANNING COMMISSION

RIVERDALE CITY COUNCIL ACCEPTANCE
THIS IS TO CERTIFY THAT THE PLAT AND DEDICATION OF THIS PLAT ALONG WITH THE DEDICATION WERE DULY APPROVED AND ACCEPTED BY THE CITY COUNCIL OF RIVERDALE CITY, UTAH, ON THE 18 DAY OF January, 1997.
David Stead
CHAIRMAN, RIVERDALE CITY COUNCIL

RIVERDALE CITY ATTORNEY
I HEREBY CERTIFY THAT THE REQUIREMENTS OF ALL APPLICABLE STATUTES AND ORDINANCES PREVIOUS TO APPROVAL BY THE CITY COUNCIL OF RIVERDALE CITY, UTAH, HAVE BEEN COMPLIED WITH, SAID THIS PLAT OF THE HAWSTEAD SUBDIVISION PHASE-8.

REEVE & REEVE ENGINEERING, INC.
ENGINEERS, PLANNERS, & SURVEYORS
3670 QUINCY AVE SUITE NO. 1
OGDEN, UTAH 84403
(801) 621-3100 FAX (801) 621-2666

RECORDED FOR: _____
PLAT DEVELOPER: _____
WEBER COUNTY RECORDER
BY: *Lucille Whelan*
44-17