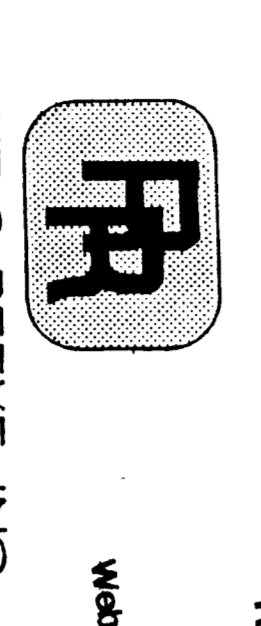
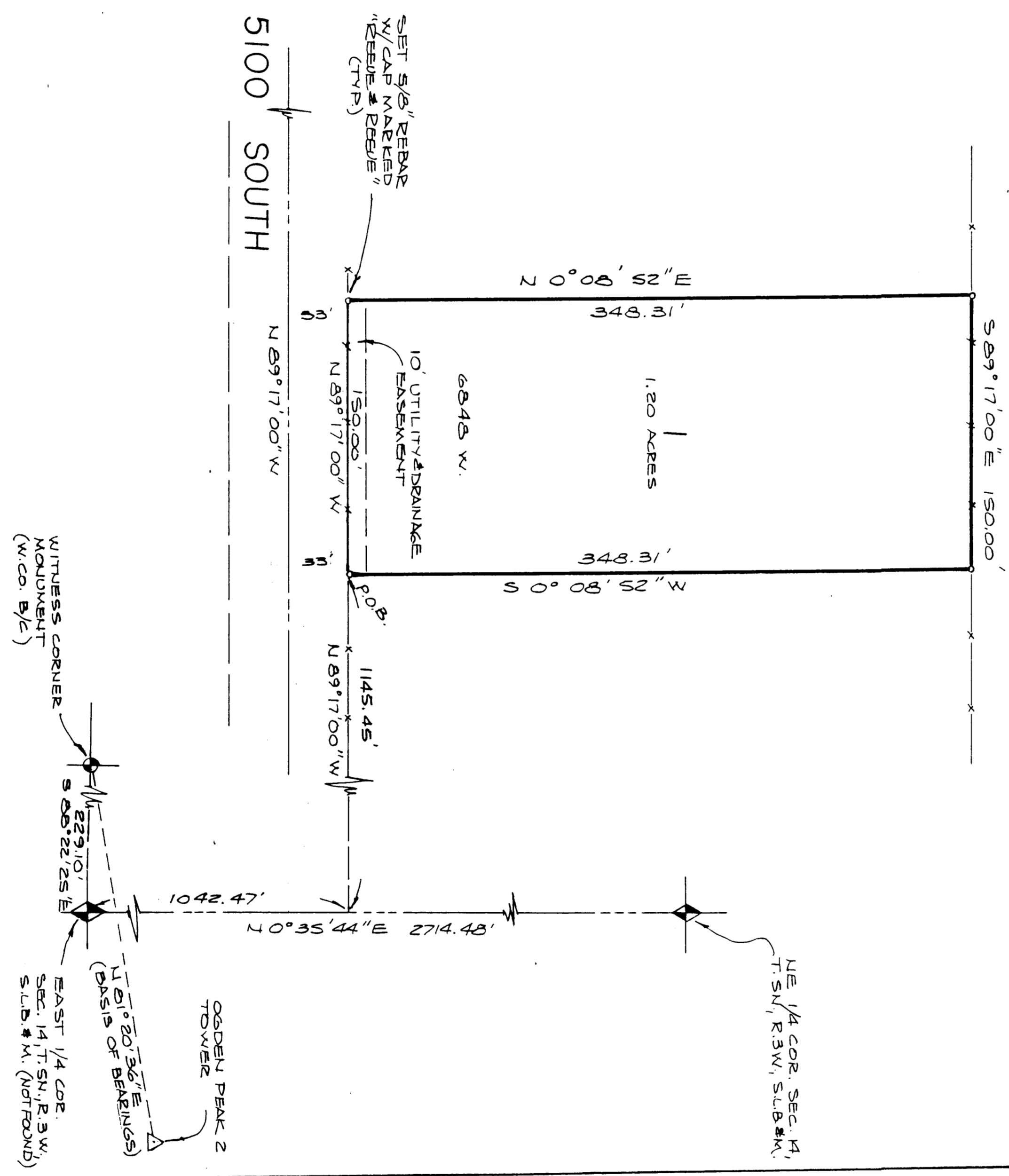


39-5E

# PRESTON FOWERS SUBDIVISION

A PART OF THE NE 1/4 OF SEC. 14, T.5 N., R.3 W., SLB.8 M., U.S. SURVEY  
WEBER COUNTY, UTAH

BOUNDARY DESCRIPTION  
A PART OF THE NORTHEAST QUARTER OF SECTION 14, T.5 N., R.3 W., SLB.8 M., DESCRIBED AS FOLLOWS:  
STREET WHICH IS N 0°35'44"E, 1042.47 FEET ALONG THE EAST LINE OF S1/4 SEC. 14 AND N 89°17'00"W, 1145.45 FEET FROM THE EAST QUARTER CORNER OF SECTION 14 TO POINT 1, 349.31 FEET; THENCE S 89°17'00"E, 150.00 FEET; THENCE S 0°08'52"W, 349.31 FEET TO THE POINT OF BEGINNING.



RECEIVED  
001 01 1997  
Weber County Surveys

SCALE 1" = 50'

WEBER COUNTY PLANNING COMMISSION  
APPROVED BY THE WEBER COUNTY PLANNING COMMISSION  
DATE: 12/13/93

WEBER COUNTY SURVEYOR  
I HEREBY CERTIFY THAT I HAVE CAREFULLY INVESTIGATED THE LINES OF SURVEY OF THE FOREGOING PLAN AND LEGAL DESCRIPTION OF THE LANDS EMBARCATED THEREIN AND FIND THEM TO BE CORRECT AND TO AGREE WITH THE RECORDS AND RECORDS OF THE COUNTY OF WEBER COUNTY, UTAH. THIS CERTIFICATION IS MADE THIS 21 DAY OF MAY 1993.

WEBER COUNTY ACCEPTANCE  
THIS IS TO CERTIFY THAT THIS PLAN AND DESCRIPTION OF THIS PLAN HAVE BEEN APPROVED AND ACCEPTED BY THE COMMISSIONERS OF WEBER COUNTY, UTAH, THIS 21 DAY OF MAY 1993.

WEBER COUNTY ENGINEER  
I HEREBY CERTIFY THAT THE REQUIREMENTS OF ALL APPLICABLE STATUTES AND ORDINANCES PRESENTLY IN EFFECT HAVE BEEN COMPLIED WITH AND THIS PLAN IS CORRECT AND TO AGREE WITH THE RECORDS AND RECORDS OF THE COUNTY OF WEBER COUNTY, UTAH, THIS 21 DAY OF MAY 1993.

WEBER COUNTY RECORDER  
ENTERED FOR RECORD AND  
RECORDED THIS 22 DAY OF MAY 1993.  
BY: DAUG ABBEY  
DEPUTY

### SURVEYOR'S CERTIFICATE

I, JOHN P. REEVE, A REGISTERED PROFESSIONAL SURVEYOR IN THE STATE OF UTAH, DO HEREBY CERTIFY THAT THIS PLAN OF SUBDIVISION IN WEBER COUNTY, UTAH, HAS BEEN DRAWN CORRECTLY TO THE DESIGNATED STATE AND IS A TRUE AND CORRECT REPRESENTATION OF THE DESCRIBED LANDS IN ACCORDANCE WITH THE REQUIREMENTS OF THE STATUTES AND ORDINANCES OF THE STATE OF UTAH AND FROM A SURVEY MADE BY ME OR UNDER MY SUPERVISION AND IN ACCORDANCE WITH ALL APPLICABLE STATUTES AND ORDINANCES OF THE STATE OF UTAH. I FURTHER CERTIFY THAT THE REQUIREMENTS OF ALL APPLICABLE STATUTES AND ORDINANCES OF THE STATE OF UTAH CONCERNING SURVEYING STANDARDS HAVE BEEN MET AND THAT THE STANDARDS FOR THE TITLE IN WHICH THEY ARE LOCATED.

### OWNER'S DEDICATION AND CERTIFICATION

WE, THE UNDERSIGNED, OWNERS OF THE HEREIN-DESCRIBED TRACT OF LAND, HEREBY SET APART AND SUBDIVIDE THE SAME INTO LOTS AND STREETS AS SHOWN ON THIS PLAN, AND HEREBY DEDICATE, RESERVE AND CONFIRM TO THE PUBLIC THE RIGHT OF WAY AND EASEMENTS FOR THE USE OF THE PUBLIC IN THE TRACTS OF LAND SHOWN ON THIS PLAN, AND HEREBY CERTIFY THAT THE REQUIREMENTS OF ALL APPLICABLE STATUTES AND ORDINANCES OF THE STATE OF UTAH CONCERNING PUBLIC UTILITY SERVICE, LINES AND DRAINAGE, AS MAY BE AUTHORIZED BY WEBER COUNTY, UTAH, HAVE BEEN MET. THE UNDERSIGNED HEREBY CERTIFY THAT THIS SUBDIVISION MEETS ALL THE REQUIREMENTS OF WEBER COUNTY, UTAH.

### ACKNOWLEDGEMENT

STATE OF UTAH  
COUNTY OF WEBER  
ON THE 21 DAY OF MAY, 1993, PERSONALLY APPEARED BEFORE ME, THE UNDERSIGNED, NOTARY PUBLIC, Howard Willey (AND Paul A. Fowers, SIGNER(S) OF THE ABOVE-ENTITLED DEDICATION AND CERTIFICATION, WHO, BEING OF SOUND MIND AND FOR THE PURPOSES THEREIN MENTIONED.

### ACKNOWLEDGEMENT

STATE OF UTAH  
COUNTY OF WEBER  
ON THE 19 DAY OF MAY, 1993, PERSONALLY APPEARED BEFORE ME, THE UNDERSIGNED, NOTARY PUBLIC, Howard Willey AND BEING BY THE OF SAID CORPORATION AND THAT THEY SIGNED THE ABOVE-ENTITLED DEDICATION AND CERTIFICATION FREELY, VOLUNTARILY, AND IN BEHALF OF SAID CORPORATION FOR THE PURPOSES THEREIN MENTIONED.