

ADJUSTED LOT 90

ALL OF LOT 90, UINAH HIGHLANDS SUBDIVISION NO. 5, TOGETHER WITH THE WESTERNLY 3.5 FEET OF LOT 91 OF SAID SUBDIVISION.

ADJUSTED LOT 91

ALL OF LOT 91, UINAH HIGHLANDS SUBDIVISION NO. 5, EXCLUDING THE WESTERNLY 3.5 FEET THEREOF.

BOUNDARY DESCRIPTION

THE BASIS OF BEARINGS FOR THIS PLAT IS N89°43'51"W, ALTHOUGH THE BEARINGS FOR THIS PLAT ARE BASED UPON THE ORIGINAL BEARINGS FOR UINAH HIGHLANDS SUBDIVISION NO. 5, THE LINE BETWEEN THE CENTER OF SECTION AND THE WEST 1/4 CORNER OF SECTION 23, T5N, R1W, SHOWN HEREON.

MARKET

THE PURPOSE OF THIS SURVEY IS TO MOVE AN EXISTING LOT LINE TO PROVIDE ROOM FOR HOME CONSTRUCTION. BOTH LOTS AFTER THE CHANGE BEING SHOWN WITH DIMENSIONS AND BEARINGS. THE BEARING CORNER AT THE FRONT CORNER WAS MARKED WITH A NAIL IN THE CURB ON THE EXTENSION OF THE LOT SIDELINE.

NOTES

NO HOMES CURRENTLY EXIST ON THESE LOTS. BOTH LOTS MEET ZONING REQUIREMENTS AFTER THE ADJUSTMENT.



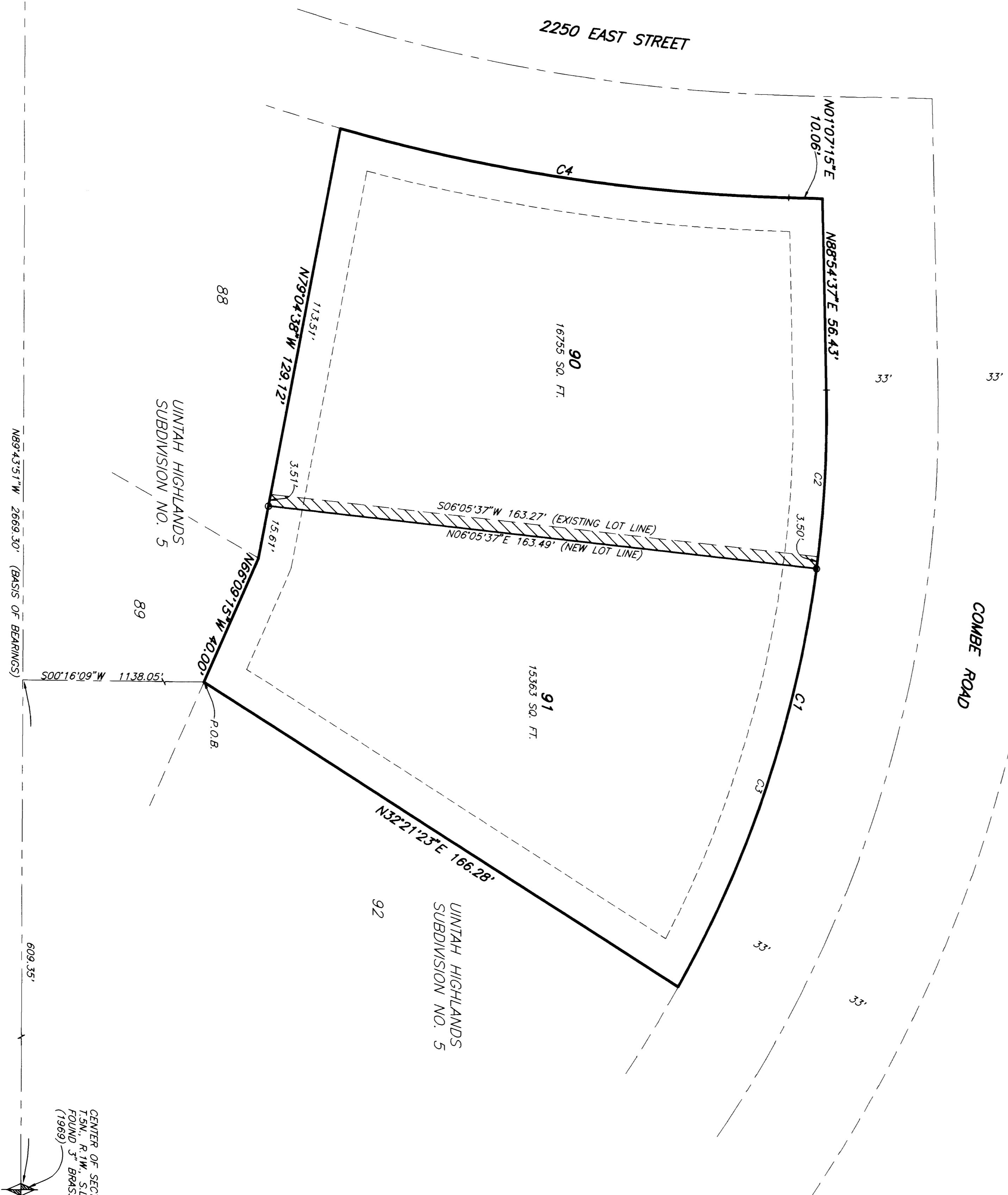
WEST 1/4 CORNER OF SECTION 23, T5N, R1W, BEING CAP (1983)

N89°43'51"W 2669.30' (BASIS OF BEARINGS)

CENTER OF SECTION 23, T5N, R1W, BEING CAP (1989)

CURVE INFORMATION

NUMBER	DELTA	CHORD	TANGENT	RADIUS	LENGTH	CHORD
C1	50°21'49"	5725.54	94.16	347.00	183.89	181.75
C2	08°43'46"	5967.43	26.49	347.00	52.87	52.82
C3	21°38'02"	57132.34	66.30	347.00	131.02	130.24
C4	142°4'52"	108719.41	67.72	333.48	134.72	134.36

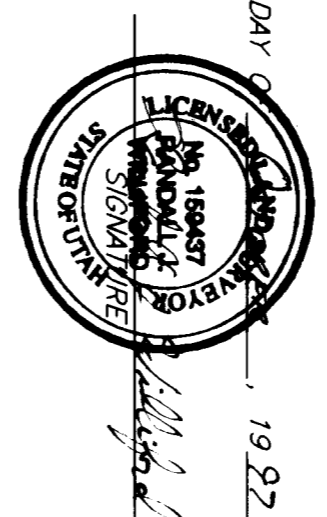


SURVEYORS CERTIFICATE

I, RANDALL J. WILFORD, DEPOSE AND SAY THAT I AM A LICENSED PROFESSIONAL LAND SURVEYOR, HOLDING UTAH LICENSE NUMBER 198437, THAT A SURVEY OF THE PROPERTY DESCRIBED HEREON WAS MADE BY ME OR UNDER MY CLOSE PERSONAL SUPERVISION AND THAT I HAVE CORRECTED ANY ERRORS IN THE FINDINGS OF THAT SURVEY.

SIGNED THIS 23<sup>rd</sup> DAY OF SEPTEMBER, 1997.

198437  
UTAH LICENSE NUMBER



LEGEND

○ = SECTION CORNER FOUND AS NOTED HEREON

○ = SET 5/8" REBAR & CAP MARKED "REEVE & REEVE"

RECEIVED

OCT 2 3 1997

Webber County Surveyor

REVISIONS

1	
2	
3	
4	
5	
6	

PROJECT NO. UNH-43  
DATE 6-5-97  
SCALE 1"=40'

DESIGNED BY R. WILFORD  
DRAWN BY JAE  
CHECKED BY

REEVE & REEVE, INC.  
ENGINEERS PLANNERS & SURVEYORS  
3670 QUINCY AVE. SUITE NO. 1  
(801) 621-3100 FAX (801) 621-6666

LOT LINE ADJUSTMENT

UINAH HIGHLANDS SUBDIVISION  
NO. 5, LOT 90 & 91  
A PART OF THE NW 1/4 OF SECTION 23, T5N, R1W, S18& M, U.S. SURVEY  
WEBBER COUNTY, UTAH  
JAN. 1989

SHEET 1

SHEETS 1