

DRAWING NUMBER
001743

PLAN HOLD CORPORATION • IRVINE, CALIFORNIA
RECORDER BY NUMBER 075AR

DRAWING NUMBER
001743

PLAN HOLD CORPORATION • IRVINE, CALIFORNIA
RECORDER BY NUMBER 075AR

DRAWING NUMBER
001743

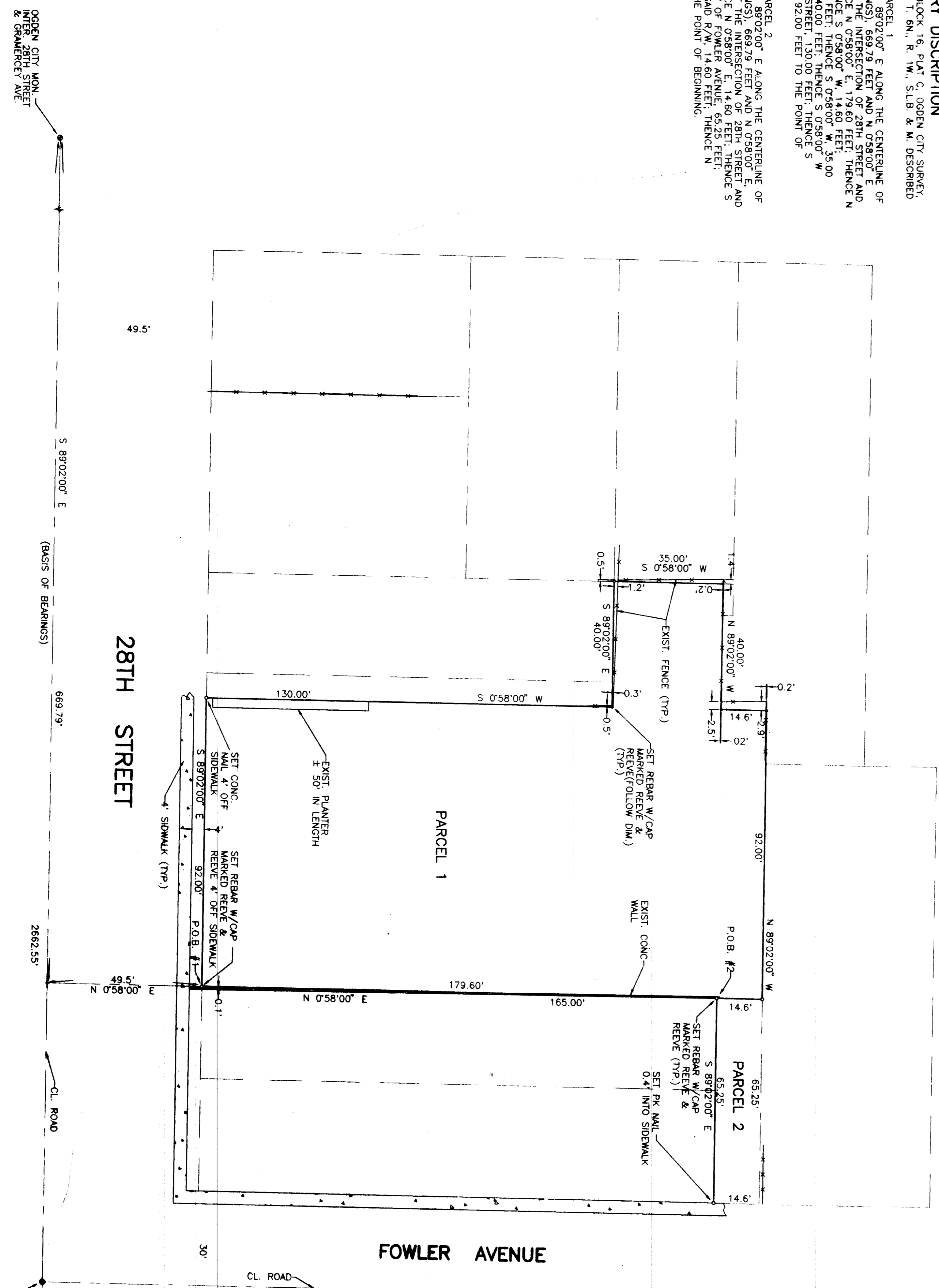
PLAN HOLD CORPORATION • IRVINE, CALIFORNIA
RECORDER BY NUMBER 075AR

DRAWING NUMBER
001743

PLAN HOLD CORPORATION • IRVINE, CALIFORNIA
RECORDER BY NUMBER 075AR

BOUNDARY DESCRIPTION
PART OF LOTS 3 & 4, BLOCK 16, PLAT C, GREEN CITY SURVEY, ALSO PART OF SEC. 33, T. 6N., R. 1W., S.L.B. 8 & W. DESCRIBED AS FOLLOWS:
PARCEL 1
28TH BEGINNING AT A POINT S 89°02'00" E ALONG THE CENTERLINE OF 28TH STREET (BASIS OF BEARINGS) 669.79 FEET AND N 0°58'00" E 49.5 FEET FROM THE MON. AT THE INTERSECTION OF 28TH STREET AND GRAMERCY AVE. RUNNING THENCE N 0°58'00" E, 179.60 FEET; THENCE N 89°02'00" W, 40.00 FEET; THENCE S 0°58'00" W, 35.00 FEET; THENCE S 89°02'00" E, 40.00 FEET; THENCE S 0°58'00" S 89°02'00" E, 92.00 FEET TO THE POINT OF BEGINNING.
PARCEL 2
28TH BEGINNING AT A POINT S 89°02'00" E ALONG THE CENTERLINE OF 28TH STREET (BASIS OF BEARINGS) 669.79 FEET AND N 0°58'00" E 49.5 FEET FROM THE MON. AT THE INTERSECTION OF 28TH STREET AND GRAMERCY AVE. RUNNING THENCE N 0°58'00" E, 14.60 FEET; THENCE S 89°02'00" W, 40.00 FEET; THENCE S 0°58'00" W, 35.00 FEET; THENCE S 89°02'00" E, 40.00 FEET; THENCE S 0°58'00" S 89°02'00" E, 92.00 FEET TO THE POINT OF BEGINNING.

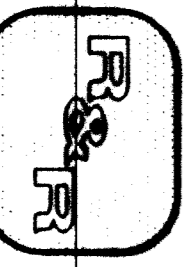
SCALE
1" = 20'



SURVEYOR'S CERTIFICATE
I, JOHN P. REEVE, UTAH REGISTERED LAND SURVEYOR NO. 3492, DO HEREBY CERTIFY THAT THIS PLAN WAS PREPARED FROM A SURVEY MADE BY ME OR UNDER MY SUPERVISION AND BELIEVED TO BE TRUE AND EXCLUSIVELY TRUE AND CORRECT TO THE BEST OF MY KNOWLEDGE AND BELIEF.
DATED THIS 23rd DAY OF FEBRUARY, 2010.
3492
UTAH LICENSE NUMBER

NARRATIVE
THE PURPOSE OF THIS SURVEY WAS TO DETERMINE THE BOUNDARIES OF PARCELS 1 AND 2, BLOCK 16, PLAT C, GREEN CITY SURVEY, AND SEC. 33, T. 6N., R. 1W., S.L.B. 8 & W. BETWEEN THE MON. AT THE INTERSECTION OF 28TH STREET AND GRAMERCY AVE. AND 28TH STREET AND HARRISON BLVD. AND 28TH STREET WAS UTILIZED AS THE BASIS OF BEARINGS.

RECORD OF SURVEY



RECEIVED
FEB 24 2010

REEVE & REEVE, INC.
CIVIL AND ENVIRONMENTAL ENGINEERING
LAND PLANNING AND SITE DESIGN
DODDEN, UTAH

RR & RR

PROJECT NO. 1000
DATE: 1-23-10
SCALE: 1" = 20'
DRAWN: JLR
CHECKED: JLR
APPROVED: JLR

REEVE & REEVE, INC.
CIVIL AND ENVIRONMENTAL ENGINEERING
LAND PLANNING AND SITE DESIGN
DODDEN, UTAH

RECORD OF SURVEY

JENSEN PROPERTY

SHEET 1 OF 2

001743