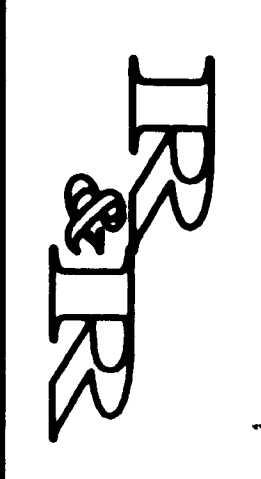


PLAN HOLD CORPORATION • IRVINE, CALIFORNIA  
RECORDED BY NUMBER 07548  
POSITION LINE OF PRINT ON THIS LINE

PLAN HOLD CORPORATION • IRVINE, CALIFORNIA  
RECORDED BY NUMBER 07548  
POSITION LINE OF PRINT ON THIS LINE

PLAN HOLD CORPORATION • IRVINE, CALIFORNIA  
RECORDED BY NUMBER 07548  
POSITION LINE OF PRINT ON THIS LINE

PLAN HOLD CORPORATION • IRVINE, CALIFORNIA  
RECORDED BY NUMBER 07548  
POSITION LINE OF PRINT ON THIS LINE



1.	REVISION
2.	
3.	
4.	

PROJECT NO.	1183-01	DATE	11-23-97
DATE	11-23-97	SCALE	1" = 30'
DESIGNED BY	JAK	CHECKED BY	JAK
APPROVED BY			

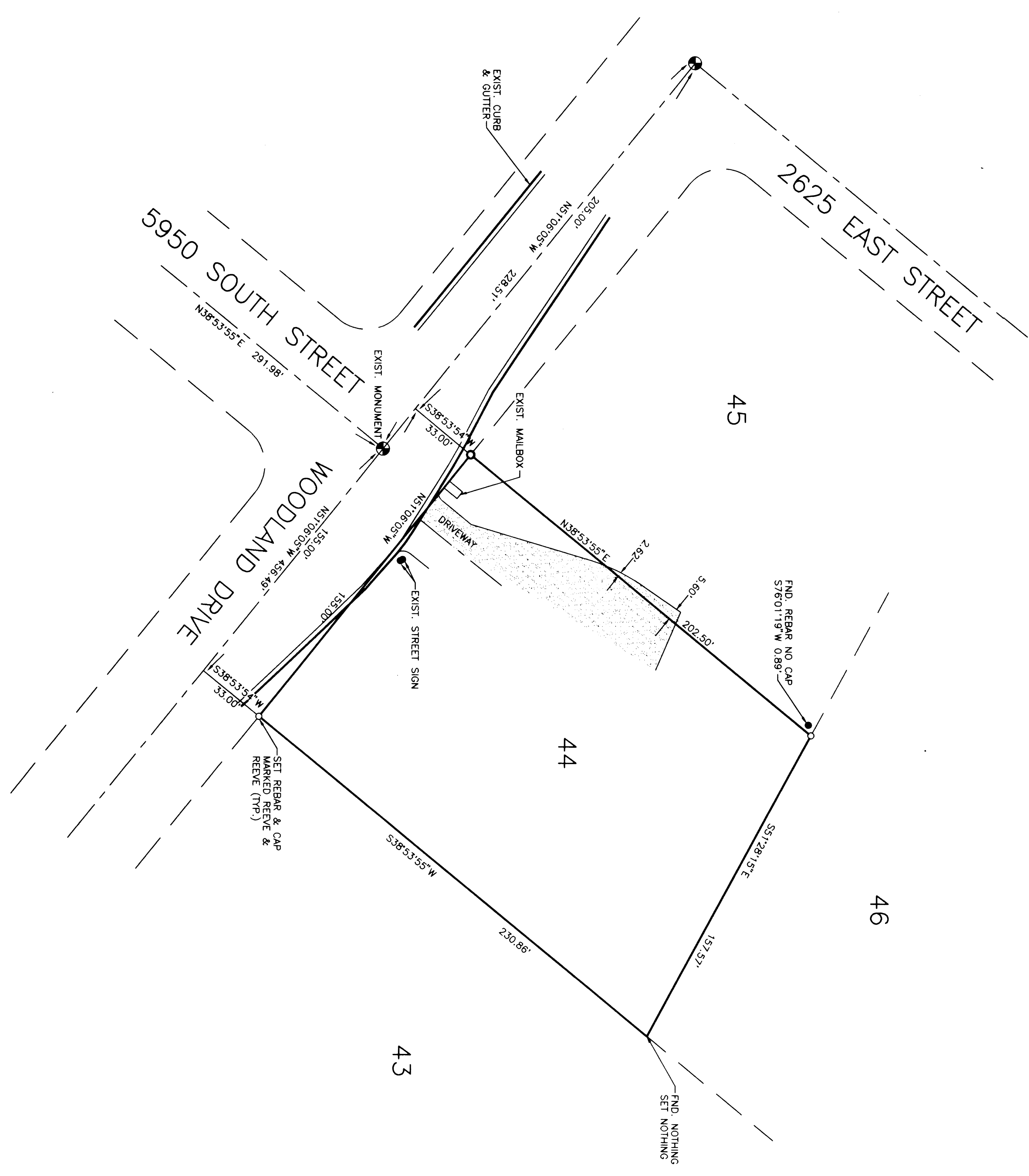
REEVE & REEVE, INC.  
CIVIL AND ENVIRONMENTAL ENGINEERING  
LAND PLANNING AND SITE DESIGN  
OGDEN, UTAH

RECORD OF SURVEY

FRANK SPINOSA 2140.01  
LOT 44, WOODLAND ESTATES

SHEET	1
SHEETS	1

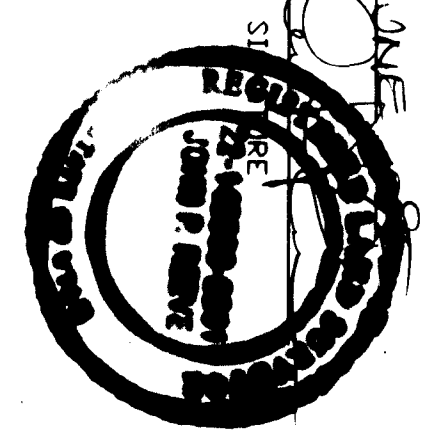
BOUNDARY DESCRIPTION  
ALL OF LOT 44 WOODLAND ESTATES SUBDIVISION - UNIT 2,  
UNINHABITATED DISTRICT, WEBER COUNTY, UTAH BEING A PART OF THE NE  
1/4 OF SEC. 23, T.15N., R.17W., S.18R & M. U.S. SURVEY.



SURVEYOR'S CERTIFICATE

I, JOHN P. REEVE, UTAH REGISTERED LAND SURVEYOR NO. 22-14666-2201,  
DO HEREBY CERTIFY THAT THE FOREGOING IS A TRUE AND CORRECT  
REPRESENTATION OF THE SURVEY MADE BY ME OR BY ME IN CONJUNCTION  
WITH OTHER REGISTERED LAND SURVEYORS AND ON BEHALF OF REEVE & REEVE, INC. AND IS  
TRUE AND CORRECT TO THE BEST OF MY KNOWLEDGE AND BELIEF.

SIGNED THIS \_\_\_\_\_ DAY OF \_\_\_\_\_  
22-14666-2201  
UTAH LICENSE NUMBER



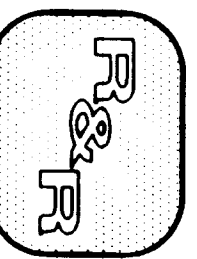
NARRATIVE

THE PURPOSE OF THIS SURVEY WAS TO VERIFY  
THE BOUNDARIES OF THIS PROPERTY.

BASIS OF BEARINGS

THE BASIS OF BEARINGS FOR THIS SURVEY IS  
THE PLAN OF THE WOODLAND ESTATES SUBDIVISION, UNIT 2,  
ON THE WOODLAND ESTATES, PART 2  
MAP RECORDED IN BOOK 11 OF PLATS, PAGE 100  
COUNTY RECORDER'S OFFICE, AS N570605'W.

\*RECORD OF SURVEY\*



REVE & REVE, INC.  
CIVIL AND ENVIRONMENTAL ENGINEERING  
LAND PLANNING AND SITE DESIGN  
OGDEN, UTAH  
Weber County Surveyor

RECEIVED  
OCT 24 1997