



1	REVISION
2	
3	
4	

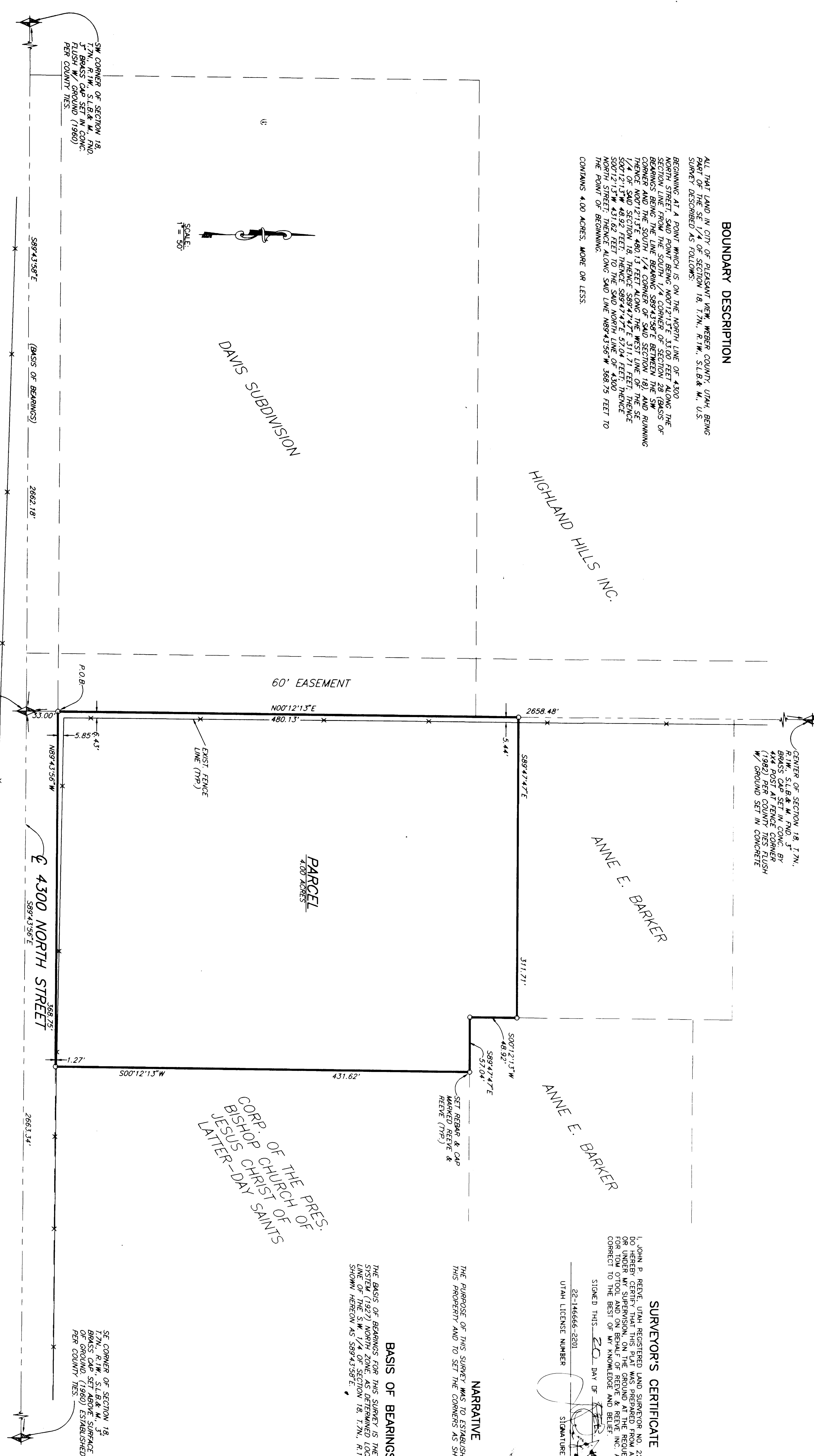
PROJECT NO. 1111-01
DATE 11-22-87
SCALE 1" = 50'

DESIGNED BY
CHECKED BY
DRAWN BY
APPROVED BY

REVEE & REVEE, INC.
CIVIL AND ENVIRONMENTAL ENGINEERING
LAND PLANNING AND SITE DESIGN
LAND SURVEYING
ODDEN, UTAH

RECORD OF SURVEY

SHEET 1
SHEETS 1



BOUNDARY DESCRIPTION

ALL THAT LAND IN CITY OF PLEASANT VIEW, WEBER COUNTY, UTAH BEING PART OF THE SE 1/4 OF SECTION 18, T7N, R1W, SLB& M, U.S. SURVEY DESCRIBED AS FOLLOWS:
BEGINNING AT A POINT WHICH IS ON THE NORTH LINE OF 4300 NORTH STREET, SAID POINT BEING N00°12'13"E 33.00 FEET ALONG THE SECTION LINE FROM THE SOUTH 1/4 CORNER OF SECTION 28 (BASIS OF CORNER AND THE SOUTH 1/4 CORNER OF SAID SECTION 18) AND RUNNING THENCE N00°12'13"E 480.13 FEET ALONG THE WEST LINE OF THE SE 1/4 OF SAID SECTION 18, THENCE S89°43'56"W 511.21 FEET, THENCE S00°12'13"W 431.62 FEET TO THE SAID NORTH LINE OF 4300 NORTH STREET, THENCE ALONG SAID LINE N89°43'56"W 2687.5 FEET TO THE POINT OF BEGINNING.
CONTAINS 4.00 ACRES, MORE OR LESS.

CORNER OF SECTION 18, T7N, R1W, SLB& M, FND, 3" BRASS CAP SET IN CONG. BY 1982 PER COUNTY DEPARTMENT W/ GROUND SET IN CONCRETE

ANNE E. BARKER

ANNE E. BARKER

CORP. OF THE PRES. BISHOP CHRIST OF JESUS LATTER-DAY SAINTS

SURVEYOR'S CERTIFICATE
I, JOHN B. REEVE, UTAH REGISTERED LAND SURVEYOR NO. 22-146666-2201, DO HEREBY CERTIFY THAT THE FOREGOING SURVEY WAS CONDUCTED BY ME OR UNDER MY SUPERVISION, ON THE GROUND AT THE REQUEST OF AND EXCLUSIVELY FOR TOM O'TOOL AND ON BEHALF OF REVEE & REVEE, INC. AND IS TRUE AND CORRECT TO THE BEST OF MY KNOWLEDGE AND BELIEF.
SIGNED THIS 22ND DAY OF OCTOBER, 1987.
22-146666-2201
UTAH LICENSE NUMBER
SIGNATURE

NARRATIVE

THE PURPOSE OF THIS SURVEY WAS TO ESTABLISH THE BOUNDARIES OF THIS PROPERTY AND TO SET THE CORNERS AS SHOWN HEREON.

BASIS OF BEARINGS

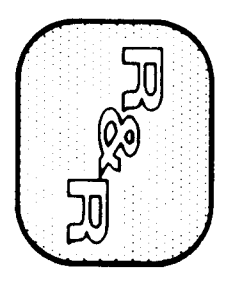
THE BASIS OF BEARINGS FOR THIS SURVEY IS THE UTAH COORDINATE SYSTEM. THE BEARINGS WERE MEASURED FROM THE UTAH COORDINATE LINE OF THE S.W. 1/4 OF SECTION 18, T7N, R1W, SLB& M, SOUTH SHOWN HEREON AS S89°43'56"E.

SW CORNER OF SECTION 18, T7N, R1W, SLB& M, FND, 3" BRASS CAP SET IN CONG. BY 1982 PER COUNTY DEPARTMENT W/ GROUND SET IN CONCRETE

SE CORNER OF SECTION 18, T7N, R1W, SLB& M, 3" BRASS CAP SET ABOVE SURFACE BY 1982 PER COUNTY DEPARTMENT W/ GROUND SET IN CONCRETE

SOUTH 1/4 CORNER OF SECTION 18, T7N, R1W, SLB& M, FND, 3" BRASS CAP SET 10' BELOW ROAD SURFACE (1982) PER COUNTY TIES

RECORD OF SURVEY



REVEE & REVEE, INC.
CIVIL AND ENVIRONMENTAL ENGINEERING
LAND PLANNING AND SITE DESIGN
LAND SURVEYING
ODDEN, UTAH

RECEIVED
OCT 24 1987