

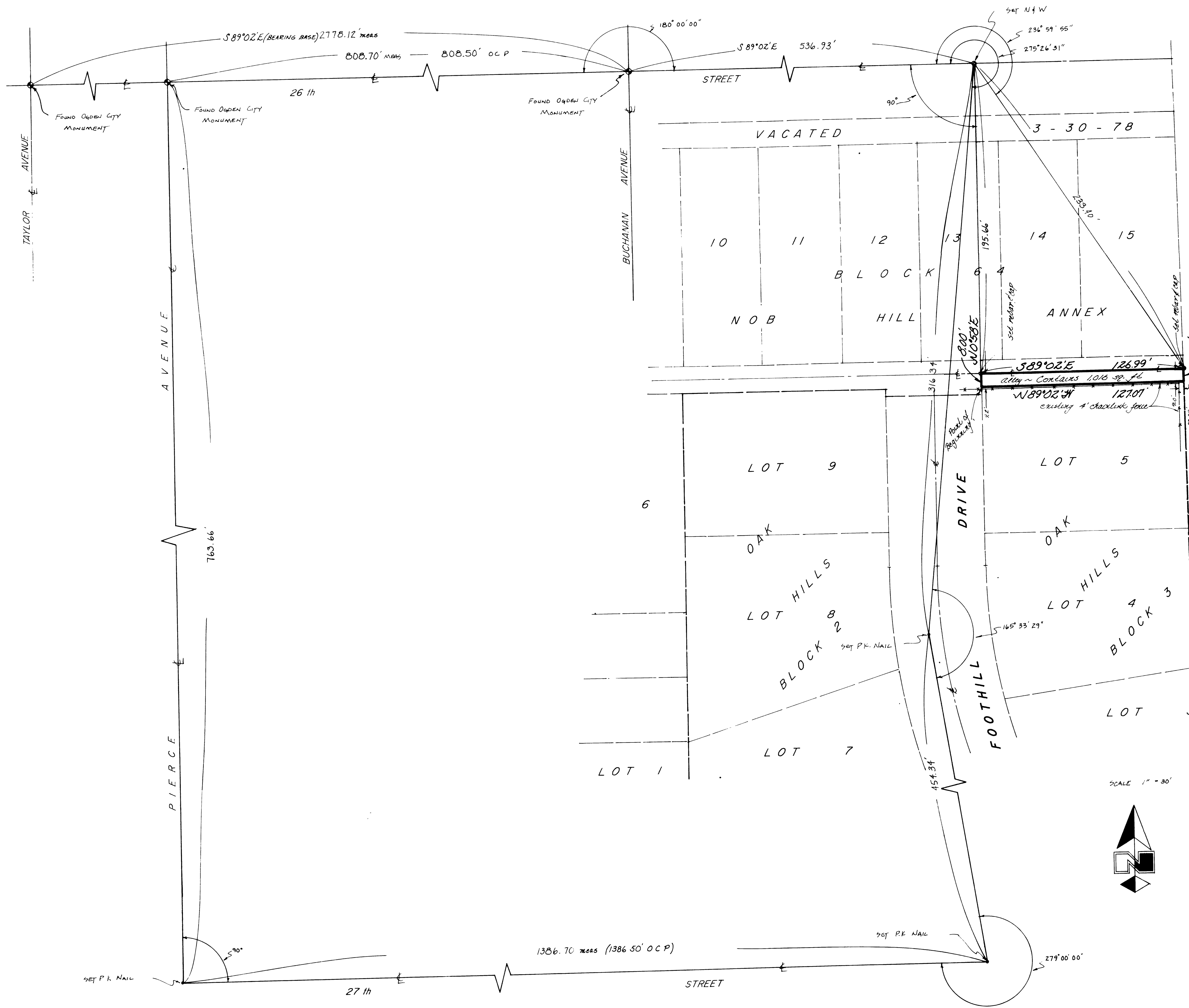
DRAWING NUMBER
000176

DRAWING NUMBER
000176

DRAWING NUMBER
000176

DRAWING NUMBER
000176

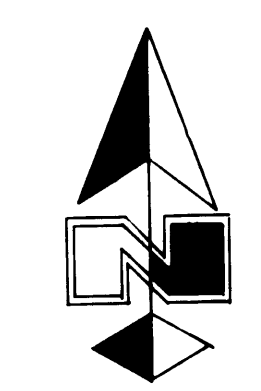
PLANNED CORPORATION - IRVINE, CALIFORNIA
REGISTERED PROFESSIONAL ENGINEER
REGISTERED PROFESSIONAL LAND SURVEYOR
REGISTERED PROFESSIONAL ARCHITECT
REGISTERED PROFESSIONAL CIVIL ENGINEER
REGISTERED PROFESSIONAL ELECTRICAL ENGINEER
REGISTERED PROFESSIONAL MECHANICAL ENGINEER
REGISTERED PROFESSIONAL CHEMICAL ENGINEER
REGISTERED PROFESSIONAL INDUSTRIAL ENGINEER
REGISTERED PROFESSIONAL METALLURGICAL ENGINEER
REGISTERED PROFESSIONAL NUCLEAR ENGINEER
REGISTERED PROFESSIONAL AERONAUTICAL ENGINEER
REGISTERED PROFESSIONAL AGRICULTURAL ENGINEER
REGISTERED PROFESSIONAL MARINE ENGINEER
REGISTERED PROFESSIONAL MINING ENGINEER
REGISTERED PROFESSIONAL PETROLEUM ENGINEER
REGISTERED PROFESSIONAL TRANSPORTATION ENGINEER
REGISTERED PROFESSIONAL WATER RESOURCES ENGINEER
REGISTERED PROFESSIONAL ENVIRONMENTAL ENGINEER
REGISTERED PROFESSIONAL FOOD ENGINEER
REGISTERED PROFESSIONAL TEXTILE ENGINEER
REGISTERED PROFESSIONAL FIBER ENGINEER
REGISTERED PROFESSIONAL POLYMER ENGINEER
REGISTERED PROFESSIONAL CERAMIC ENGINEER
REGISTERED PROFESSIONAL GLASS ENGINEER
REGISTERED PROFESSIONAL PLASTIC ENGINEER
REGISTERED PROFESSIONAL COMPOSITE ENGINEER
REGISTERED PROFESSIONAL BIOMEDICAL ENGINEER
REGISTERED PROFESSIONAL AEROSPACE ENGINEER
REGISTERED PROFESSIONAL ACOUSTIC ENGINEER
REGISTERED PROFESSIONAL OPTICAL ENGINEER
REGISTERED PROFESSIONAL LASER ENGINEER
REGISTERED PROFESSIONAL RADIATION ENGINEER
REGISTERED PROFESSIONAL NUCLEAR ENGINEER
REGISTERED PROFESSIONAL CHEMICAL ENGINEER
REGISTERED PROFESSIONAL METALLURGICAL ENGINEER
REGISTERED PROFESSIONAL INDUSTRIAL ENGINEER
REGISTERED PROFESSIONAL ELECTRICAL ENGINEER
REGISTERED PROFESSIONAL MECHANICAL ENGINEER
REGISTERED PROFESSIONAL CIVIL ENGINEER
REGISTERED PROFESSIONAL ARCHITECT
REGISTERED PROFESSIONAL LAND SURVEYOR
REGISTERED PROFESSIONAL ENGINEER
REGISTERED PROFESSIONAL CONSULTING ENGINEER & SURVEYOR
REGISTERED PROFESSIONAL OGDEN & SALT LAKE CITY, UTAH



Narrative
 This survey was requested by Mr. J. W. Smith on behalf of Mrs. Frank Ellis in order to establish the centerline of the alley (now vacated) adjoining Lot 5 Oak Hills, Ogden City, Weber County, Utah. Ogden City monuments were found on 26th Street at Buchanan Avenue, Pierce Avenue and Taylor Avenue. A line bearing North 89°02' West between these monuments was used as a basis of bearings. A rebar and Great Basin Cap was set at each corner.

DESCRIPTION
 A part of the Vacated Alley in Block 64, Nob Hill Annex: Beginning at the Northwest Corner of Lot 5, Block 3, Oak Hills, Ogden City, Weber County, Utah; running thence North 0°58' East 8.00 feet to the centerline of said Alley; thence South 89°02' East 126.99 feet along said centerline; thence South 0°23'39" West 8.00 feet to the Northeast Corner of said Lot 5; thence North 89°02' West 127.07 feet along the North line of said Lot to the point of beginning. Contains 1,016 Square Feet

SCALE 1" = 30'



I, Gary L. Newman, do hereby certify that I am a Registered Land Surveyor, and that I hold Certificate No. 4778, as prescribed by the Laws of the State of Utah, and I have made a survey of the above described property. I further certify that the above plat correctly shows the true dimensions of the property surveyed.

Date 11-10-88 *Gary L. Newman*
 Gary L. Newman
 Registered Land Surveyor
 No. 4778
 GARY L. NEWMAN
 State of Utah

RECEIVED
NOV 11 1988
Weber County Surveyor

GREAT BASIN ENGINEERING, INC.
 CONSULTING ENGINEERS & SURVEYORS
 OGDEN & SALT LAKE CITY, UTAH

PROPERTY SURVEY
 for
MRS. FRANK ELLIS
 A PART OF BLOCK 64, NOB HILL ANNEX
 & SEC. 33, T6N, R10W, S18BM U.S. SURVEY

DATE	5/10/88	SCALE	1" = 30'	PROJECT	PS-88-38
------	---------	-------	----------	---------	----------

000176