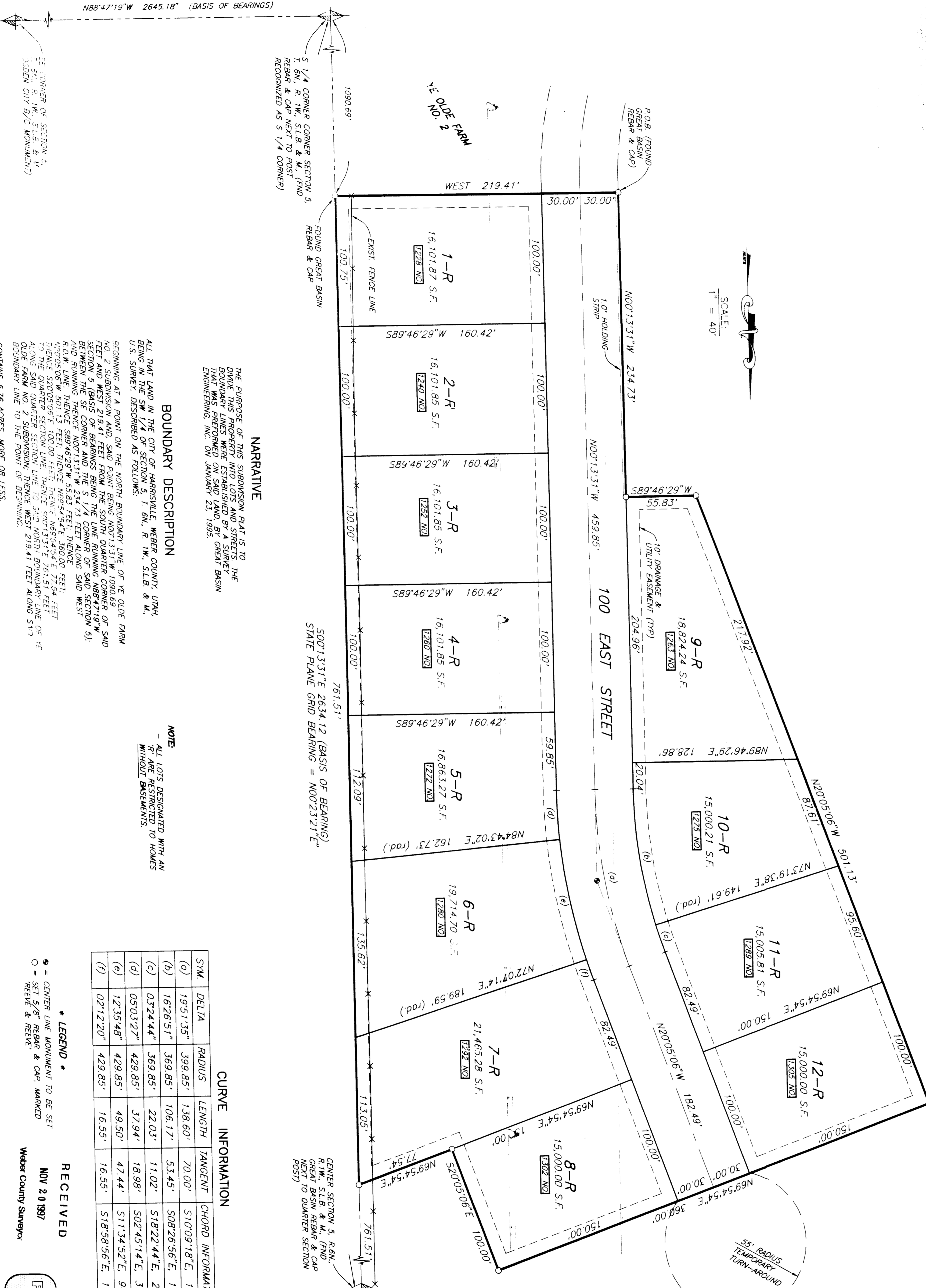


SUMMER FARMS NO. 1

PART OF THE SW 1/4 OF SECTION 5, T. 6N., R. 12W., S. 18B. & M., U.S. SURVEY
HARRISVILLE CITY, WEBER COUNTY, UTAH
JANUARY, 1996



NARRATIVE

THE PURPOSE OF THIS SUBDIVISION PLAT IS TO DIVIDE THIS PROPERTY INTO LOTS AND STREETS. THE BOUNDARY LINES WERE ESTABLISHED BY SURVEY ENGINEERING, INC. ON JANUARY 23, 1995.

BOUNDARY DESCRIPTION

ALL THAT LAND IN THE CITY OF HARRISVILLE, WEBER COUNTY, UTAH, BEING IN THE SW 1/4 OF SECTION 5, T. 6N., R. 12W., S. 18B. & M., U.S. SURVEY, RESUBDIVIDED AS FOLLOWS:

BEGINNING AT A POINT ON THE NORTH BOUNDARY LINE OF YE OLDE FARM PLAT AND WEST 219.41 FEET FROM THE SOUTH QUARTER CORNER OF SAID SECTION 5 (BASIS OF BEARINGS BEING THE LINE RUNNING AND BEING BETWEEN THE SE CORNER OF SECTION 5, T. 6N., R. 12W., S. 18B. & M., U.S. SURVEY, AND THE SE CORNER OF SECTION 5, T. 6N., R. 12W., S. 18B. & M., U.S. SURVEY, THENCE S89°46'29\"/>

NOTE:

ALL LOTS DESIGNATED WITH AN "R" ARE RESTRICTED TO HOMES WITHOUT DWELLSHIPS.

CURVE INFORMATION

SYM.	DELTA	RADIUS	LENGTH	TANGENT	CHORD INFORMATION
(a)	19°51'35"	399.85'	138.60'	70.00'	S170°09'18"E, 137.90'
(b)	16°28'51"	369.85'	106.17'	53.45'	S08°26'56"E, 105.81'
(c)	03°24'44"	369.85'	22.03'	11.02'	S18°22'44"E, 22.02'
(d)	05°03'22"	429.85'	37.94'	18.98'	S02°45'14"E, 37.93'
(e)	12°35'48"	429.85'	49.50'	47.44'	S11°34'52"E, 94.31'
(f)	02°12'20"	429.85'	16.55'	16.55'	S18°58'56"E, 16.55'

LEGEND

• CENTER LINE MONUMENT TO BE SET
○ SET BY REBAR & CAP, MARKED
REBAR & CAP NEXT TO QUARTER SECTION

NOV 20 1997
Weber County Surveyor

SURVEYOR'S CERTIFICATE

I, JOHN P. REEVE, A REGISTERED PROFESSIONAL SURVEYOR IN THE STATE OF UTAH, HAVE SURVEYED THE ABOVE DESCRIBED SUBDIVISION PLAT AND THE BOUNDARY LINES THEREON AND I HEREBY CERTIFY THAT THE SAID PLAT AND BOUNDARY LINES WERE CORRECTLY SURVEYED AND PLATED IN ACCORDANCE WITH THE UTAH SURVEYING ACT AND THE UTAH SUBDIVISION ACT AND I HAVE FILED THIS PLAT WITH THE COUNTY CLERK OF WEBER COUNTY, UTAH, AND I HAVE RECORDED THIS PLAT WITH THE COUNTY CLERK OF WEBER COUNTY, UTAH, AND I HAVE FILED THIS PLAT WITH THE COUNTY CLERK OF WEBER COUNTY, UTAH, AND I HAVE RECORDED THIS PLAT WITH THE COUNTY CLERK OF WEBER COUNTY, UTAH.

SIGNED THIS 29 DAY OF MAY, 1996.
JOHN P. REEVE
REGISTERED LAND SURVEYOR
22-146866-2201

OWNERS DEDICATION AND CERTIFICATION

WE, THE UNDERSIGNED, OWNERS OF THE HEREBY DESCRIBED TRACT OF LAND SHOWN ON THIS PLAT, AND HAVE HEREBY SET ASIDE AND DEDICATED TO THE PUBLIC THE STREETS AND ALLEYS SHOWN ON THIS PLAT AND WE HEREBY CERTIFY THAT THE SAID TRACT OF LAND AND THE SAID STREETS AND ALLEYS WERE CORRECTLY SURVEYED AND PLATED IN ACCORDANCE WITH THE UTAH SURVEYING ACT AND THE UTAH SUBDIVISION ACT AND WE HEREBY CERTIFY THAT THE SAID TRACT OF LAND AND THE SAID STREETS AND ALLEYS WERE CORRECTLY SURVEYED AND PLATED IN ACCORDANCE WITH THE UTAH SURVEYING ACT AND THE UTAH SUBDIVISION ACT.

SIGNED THIS 23 DAY OF July, 1996
S. L. Commercial Real Estate Co.
By Howard K. F. - President

ACKNOWLEDGEMENT

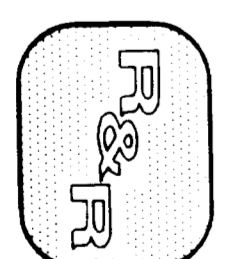
STATE OF UTAH, COUNTY OF WEBER, I, _____, PERSONALLY APPEARED BEFORE ME, THE UNDERSIGNED, A NOTARY PUBLIC, AND I HEREBY CERTIFY THAT THE SAID PERSON IS THE OWNER OF THE ABOVE DESCRIBED TRACT OF LAND AND THAT THE SAID PERSON HAS READ AND UNDERSTANDS THE CONTENTS OF THE SAID PLAT AND HAS VOLUNTARILY AND IN BEHALF OF SAID CORPORATION FOR THE PURPOSES HEREIN MENTIONED.

COMMISSION EXPIRES _____ NOTARY PUBLIC

ACKNOWLEDGEMENT

STATE OF UTAH, COUNTY OF WEBER, I, _____, PERSONALLY APPEARED BEFORE ME, THE UNDERSIGNED, A NOTARY PUBLIC, AND I HEREBY CERTIFY THAT THE SAID PERSON IS THE OWNER OF THE ABOVE DESCRIBED TRACT OF LAND AND THAT THE SAID PERSON HAS READ AND UNDERSTANDS THE CONTENTS OF THE SAID PLAT AND HAS VOLUNTARILY AND IN BEHALF OF SAID CORPORATION FOR THE PURPOSES HEREIN MENTIONED.

COMMISSION EXPIRES _____ NOTARY PUBLIC



RECEIVED

NOV 20 1997
Weber County Surveyor

HARRISVILLE CITY ENGINEER

APPROVED BY THE HARRISVILLE CITY ENGINEER ON THIS DAY OF FEBRUARY, 1996.

HARRISVILLE CITY COUNCIL ACCEPTANCE

THIS IS TO CERTIFY THAT THE SUBDIVISION PLAT, THE DEDICATION OF PUBLIC STREETS AND OTHER PUBLIC WORKS AND FINANCIAL GUARANTEE OF PUBLIC IMPROVEMENTS ASSOCIATED WITH THE SUBDIVISION, THEREON ARE HEREBY APPROVED AND ACCEPTED BY THE CITY OF HARRISVILLE, UTAH, ON THIS DAY OF FEBRUARY, 1996.

HARRISVILLE CITY ATTORNEY

APPROVED BY THE HARRISVILLE CITY ATTORNEY ON THIS DAY OF FEBRUARY, 1996.

REEVE & REEVE ENGINEERING, INC.

REGISTERED PROFESSIONAL SURVEYORS
13570 QUINN AVE. SUITE NO. 1
HARRISVILLE, UTAH 84403
(801)951-3100 FAX (801)951-2666

HARRISVILLE CITY PLANNING COMMISSION APPROVAL

THIS IS TO CERTIFY THAT THE SUBDIVISION PLAT WAS ONLY APPROVED BY THE HARRISVILLE CITY PLANNING COMMISSION ON THE DAY OF FEBRUARY, 1996.

HARRISVILLE CITY ENGINEER

APPROVED BY THE HARRISVILLE CITY ENGINEER ON THIS DAY OF FEBRUARY, 1996.

HARRISVILLE CITY COUNCIL ACCEPTANCE

THIS IS TO CERTIFY THAT THE SUBDIVISION PLAT, THE DEDICATION OF PUBLIC STREETS AND OTHER PUBLIC WORKS AND FINANCIAL GUARANTEE OF PUBLIC IMPROVEMENTS ASSOCIATED WITH THE SUBDIVISION, THEREON ARE HEREBY APPROVED AND ACCEPTED BY THE CITY OF HARRISVILLE, UTAH, ON THIS DAY OF FEBRUARY, 1996.

HARRISVILLE CITY ATTORNEY

APPROVED BY THE HARRISVILLE CITY ATTORNEY ON THIS DAY OF FEBRUARY, 1996.

REEVE & REEVE ENGINEERING, INC.

REGISTERED PROFESSIONAL SURVEYORS
13570 QUINN AVE. SUITE NO. 1
HARRISVILLE, UTAH 84403
(801)951-3100 FAX (801)951-2666

HARRISVILLE CITY PLANNING COMMISSION APPROVAL

THIS IS TO CERTIFY THAT THE SUBDIVISION PLAT WAS ONLY APPROVED BY THE HARRISVILLE CITY PLANNING COMMISSION ON THE DAY OF FEBRUARY, 1996.

HARRISVILLE CITY ENGINEER

APPROVED BY THE HARRISVILLE CITY ENGINEER ON THIS DAY OF FEBRUARY, 1996.

HARRISVILLE CITY COUNCIL ACCEPTANCE

THIS IS TO CERTIFY THAT THE SUBDIVISION PLAT, THE DEDICATION OF PUBLIC STREETS AND OTHER PUBLIC WORKS AND FINANCIAL GUARANTEE OF PUBLIC IMPROVEMENTS ASSOCIATED WITH THE SUBDIVISION, THEREON ARE HEREBY APPROVED AND ACCEPTED BY THE CITY OF HARRISVILLE, UTAH, ON THIS DAY OF FEBRUARY, 1996.

HARRISVILLE CITY ATTORNEY

APPROVED BY THE HARRISVILLE CITY ATTORNEY ON THIS DAY OF FEBRUARY, 1996.

REEVE & REEVE ENGINEERING, INC.

REGISTERED PROFESSIONAL SURVEYORS
13570 QUINN AVE. SUITE NO. 1
HARRISVILLE, UTAH 84403
(801)951-3100 FAX (801)951-2666

HARRISVILLE CITY PLANNING COMMISSION APPROVAL

THIS IS TO CERTIFY THAT THE SUBDIVISION PLAT WAS ONLY APPROVED BY THE HARRISVILLE CITY PLANNING COMMISSION ON THE DAY OF FEBRUARY, 1996.

HARRISVILLE CITY ENGINEER

APPROVED BY THE HARRISVILLE CITY ENGINEER ON THIS DAY OF FEBRUARY, 1996.

HARRISVILLE CITY COUNCIL ACCEPTANCE

THIS IS TO CERTIFY THAT THE SUBDIVISION PLAT, THE DEDICATION OF PUBLIC STREETS AND OTHER PUBLIC WORKS AND FINANCIAL GUARANTEE OF PUBLIC IMPROVEMENTS ASSOCIATED WITH THE SUBDIVISION, THEREON ARE HEREBY APPROVED AND ACCEPTED BY THE CITY OF HARRISVILLE, UTAH, ON THIS DAY OF FEBRUARY, 1996.

HARRISVILLE CITY ATTORNEY

APPROVED BY THE HARRISVILLE CITY ATTORNEY ON THIS DAY OF FEBRUARY, 1996.

REEVE & REEVE ENGINEERING, INC.

REGISTERED PROFESSIONAL SURVEYORS
13570 QUINN AVE. SUITE NO. 1
HARRISVILLE, UTAH 84403
(801)951-3100 FAX (801)951-2666

HARRISVILLE CITY PLANNING COMMISSION APPROVAL

THIS IS TO CERTIFY THAT THE SUBDIVISION PLAT WAS ONLY APPROVED BY THE HARRISVILLE CITY PLANNING COMMISSION ON THE DAY OF FEBRUARY, 1996.

HARRISVILLE CITY ENGINEER

APPROVED BY THE HARRISVILLE CITY ENGINEER ON THIS DAY OF FEBRUARY, 1996.

HARRISVILLE CITY COUNCIL ACCEPTANCE

THIS IS TO CERTIFY THAT THE SUBDIVISION PLAT, THE DEDICATION OF PUBLIC STREETS AND OTHER PUBLIC WORKS AND FINANCIAL GUARANTEE OF PUBLIC IMPROVEMENTS ASSOCIATED WITH THE SUBDIVISION, THEREON ARE HEREBY APPROVED AND ACCEPTED BY THE CITY OF HARRISVILLE, UTAH, ON THIS DAY OF FEBRUARY, 1996.

HARRISVILLE CITY ATTORNEY

APPROVED BY THE HARRISVILLE CITY ATTORNEY ON THIS DAY OF FEBRUARY, 1996.

REEVE & REEVE ENGINEERING, INC.

REGISTERED PROFESSIONAL SURVEYORS
13570 QUINN AVE. SUITE NO. 1
HARRISVILLE, UTAH 84403
(801)951-3100 FAX (801)951-2666