

9-44

MEADOWLARK 2 SUBDIVISION AMENDED

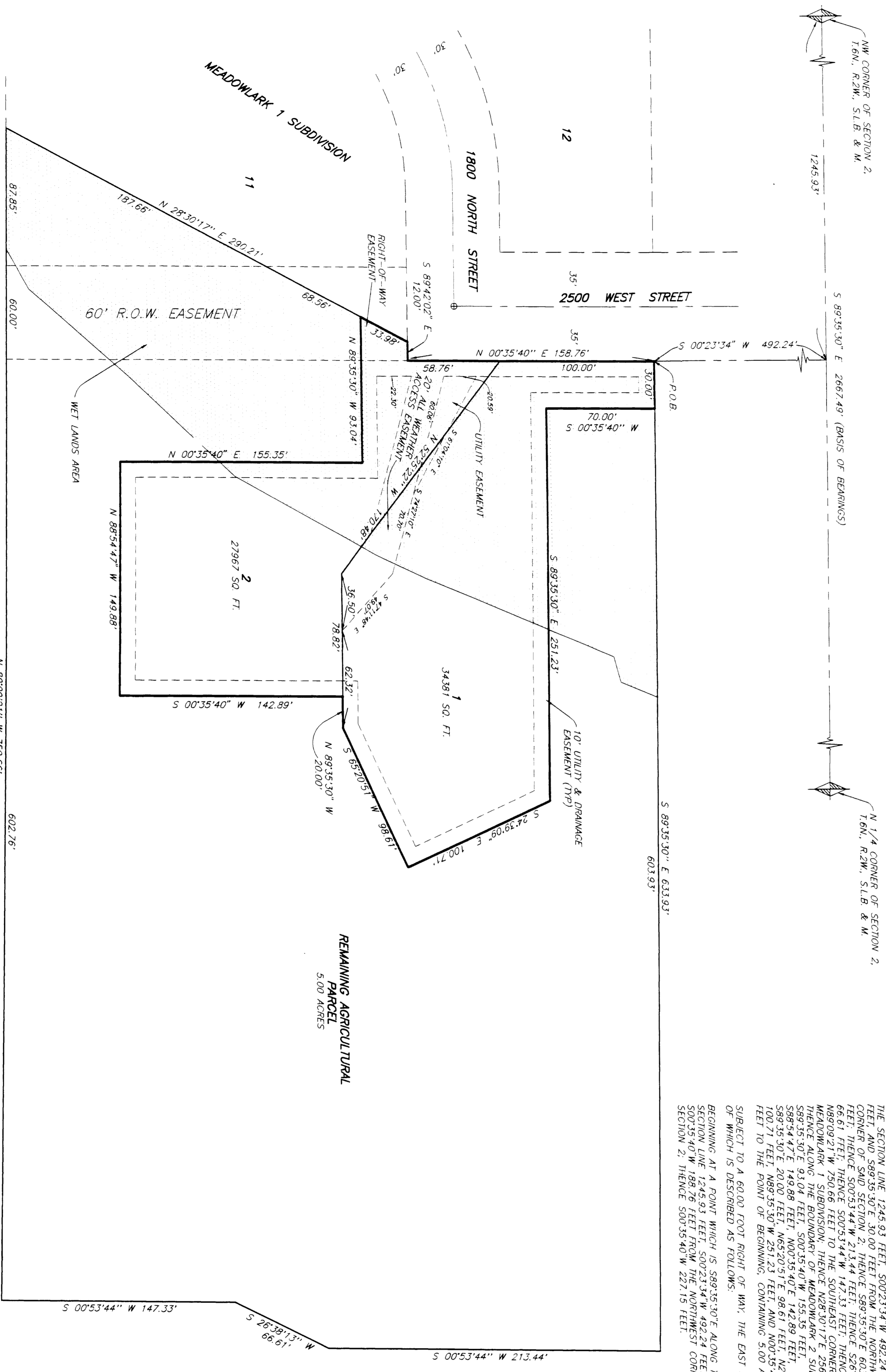
PART OF THE NW 1/4 OF SEC. 2, T. 6N., R. 2W., S.L.B. & M., U.S. SURVEY
FARR WEST CITY, WEBER COUNTY, UTAH
MARCH, 1997

REMAINING AGRICULTURAL PARCEL

BEGINS AT A POINT WHICH IS 8975.30' E ALONG THE SECTION LINE 1245.93' FEET, S 00°23'34" W 492.24' FEET, N 1/4 CORNER OF SECTION 2, T. 6N., R. 2W., S.L.B. & M., U.S. SURVEY, DESCRIBED AS FOLLOWS:

THE SECTION LINE 1245.93' FEET, S 00°23'34" W 492.24' FEET, N 1/4 CORNER OF SECTION 2, T. 6N., R. 2W., S.L.B. & M., U.S. SURVEY, DESCRIBED AS FOLLOWS:

BEGINS AT A POINT WHICH IS 8975.30' E ALONG THE SECTION LINE 1245.93' FEET, S 00°23'34" W 492.24' FEET, N 1/4 CORNER OF SECTION 2, T. 6N., R. 2W., S.L.B. & M., U.S. SURVEY, DESCRIBED AS FOLLOWS:



BOUNDARY DESCRIPTION

PART OF THE NORTHWEST 1/4 OF SECTION 2, T. 6N., R. 2W., S.L.B. & M., U.S. SURVEY, DESCRIBED AS FOLLOWS:

BEGINS AT A POINT ON THE EAST LINE OF 2500 WEST STREET, SAID POINT BEING 5893.50' E ALONG THE SECTION LINE CORNER OF SAID SECTION 2, THENCE S89°35'30" E 30.00' FEET, THENCE S00°35'40" W 70.00' FEET, THENCE S89°35'30" E 291.23' FEET, THENCE S74°42'00" E 142.89' FEET, THENCE S89°35'30" W 50.00' FEET, THENCE S00°35'40" W 142.89' FEET, THENCE N89°34'47" W 149.88' FEET, THENCE N00°35'40" E 155.35' FEET, THENCE N89°35'30" W 50.00' FEET, THENCE S00°35'40" W 142.89' FEET, THENCE N89°35'30" E 149.88' FEET, THENCE N00°35'40" E 155.35' FEET, THENCE N89°35'30" W 50.00' FEET, THENCE S00°35'40" W 142.89' FEET, THENCE S89°35'30" E ALONG SAID SOUTH LINE 12.00' FEET TO SAID EAST LINE OF 2500 WEST STREET, THENCE NORTH 50°35'40" E ALONG SAID EAST LINE 158.76' FEET TO THE POINT OF BEGINNING, CONTAINING 1.43 ACRES.

REMAINING AGRICULTURAL PARCEL

5.00 ACRES

RECEIVED

NOV 20 1997
Weber County Surveyor

LEGEND
* = SECTION CORNER FOUND AS NOTED
= EXISTING CENTRAL LINE MONUMENT

SURVEYOR'S CERTIFICATE

I, JOHN P. REEVE, A REGISTERED PROFESSIONAL SURVEYOR IN THE STATE OF UTAH, DO HEREBY CERTIFY THAT THIS PLAN OF MEADOWLARK 2 SUBDIVISION AMENDED, PART OF THE NW 1/4 OF SECTION 2, T. 6N., R. 2W., S.L.B. & M., U.S. SURVEY, IS A TRUE AND CORRECT REPRESENTATION OF THE HEREIN DESCRIBED LOTS IN SAID SUBDIVISION, BASED UPON THE RECORDS OF THE SURVEYOR'S OFFICE AND FROM A SURVEY MADE BY ME ON THE GROUND. I FURTHER CERTIFY THAT THE REQUIREMENTS OF ALL APPLICABLE SURVEY REQUIREMENTS REGARDING LOT MEASUREMENTS HAVE BEEN COMPLIED WITH, AND THE LOTS MEET THE SITE DEVELOPMENT STANDARDS FOR THE ZONE IN WHICH THEY ARE LOCATED.

SIGNED THIS 17th DAY OF MARCH, 1997

JOHN P. REEVE
SURVEYOR

OWNER'S DEDICATION AND CERTIFICATION

WE, THE UNDERSIGNED, OWNERS OF THE HEREIN DESCRIBED TRACT OF LAND, DO HEREBY DEDICATE, GRANT, AND CONVEY TO THE PUBLIC THE LOTS AND STREETS SHOWN ON THIS PLAN AND TRACT OF LAND DESIGNATED AS STREETS. THE SAME TO BE USED AS PUBLIC HIGHWAYS FOREVER, AND ALSO DEDICATE TO THE PUBLIC THE UTILITY AND DRAINAGE EASEMENTS, AS SHOWN HEREON, THE SAME TO BE USED FOR ACCESS AND THE INSTALLATION, MAINTENANCE, AND REPAIR OF PUBLIC UTILITIES AND DRAINAGE, AS MAY BE AUTHORIZED BY THE PUBLIC UTILITIES AND DRAINAGE COMMISSIONS. WE HEREBY CERTIFY THAT THE REQUIREMENTS OF ALL APPLICABLE ORDINANCES OF THE CITY OF FARR WEST CITY, UTAH, HAVE BEEN COMPLIED WITH, AND THE REQUIREMENTS OF THE UTAH ZONING ORDINANCES ARE MET.

SIGNED THIS 17th DAY OF MARCH, 1997

DAVID W. HULL
TRUSTEE

ACKNOWLEDGEMENT

STATE OF UTAH, COUNTY OF WEBER, ss: I, David W. Hull, Notary Public, do hereby certify that the foregoing is a true and correct copy of the original instrument as the same appears in my records, and that the same was acknowledged before me on this 17th day of March, 1997, by the persons whose names are subscribed to the same.

DAVID W. HULL
NOTARY PUBLIC

ACKNOWLEDGEMENT

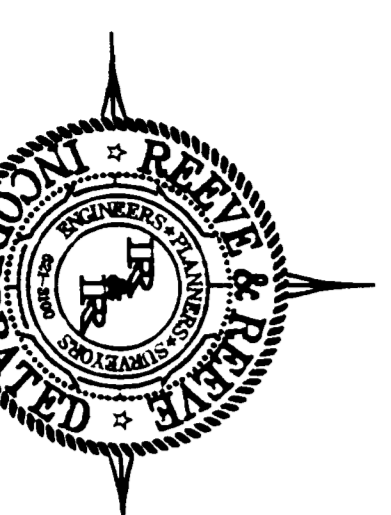
STATE OF UTAH, COUNTY OF WEBER, ss: I, John P. Reeve, Notary Public, do hereby certify that the foregoing is a true and correct copy of the original instrument as the same appears in my records, and that the same was acknowledged before me on this 17th day of March, 1997, by the persons whose names are subscribed to the same.

JOHN P. REEVE
NOTARY PUBLIC

RECORDING INFORMATION

BOOK NO. 187-63 RECORDED BY R. WILFORD
DATE: JANUARY 15, 1997 EXPIRES: C. CALE
SCALE: 1"=40' CHECKED: JPR
RECORDED: 3-17-97 (LMD)

WEBER COUNTY RECORDER
ENTER NO. 187-63 IN THE PUBLIC RECORDS AND RECORDS IN BOOK NO. 187-63 OF THE OFFICIAL RECORDS, PAGE 117.
RECORDED FOR: DAVID W. HULL



FARR WEST CITY PLANNING COMMISSION
APPROVED BY THE FARR WEST CITY PLANNING COMMISSION ON THE 7th DAY OF APRIL, 1997.

John R. Stewart
FARR WEST CITY CHAIRMAN

FARR WEST CITY ENGINEER
APPROVED BY THE FARR WEST CITY ENGINEER ON THE 18th DAY OF MARCH, 1997.

Scott J. Jones
FARR WEST CITY ENGINEER

FARR WEST CITY ACCEPTANCE
THIS IS TO CERTIFY THAT THIS PLAN AND DESIGN FOR THE MEADOWLARK 2 SUBDIVISION AMENDED, PART OF THE NW 1/4 OF SECTION 2, T. 6N., R. 2W., S.L.B. & M., U.S. SURVEY, HAS BEEN ACCEPTED BY THE FARR WEST CITY ENGINEER AND THE FARR WEST CITY PLANNING COMMISSION ON THE 18th DAY OF MARCH, 1997.

David W. Hull
Surveyor

FARR WEST ATTORNEY
I, HEREBY CERTIFY THAT THE REQUIREMENTS OF ALL APPLICABLE STATUTES AND ORDINANCES RELATIVE TO THE RECORDING OF THIS PLAN AND DESIGNATIONS HAVE BEEN COMPLIED WITH DATED THIS 17th DAY OF MARCH, 1997.

John P. Reeve
Attorney

REEVE & REEVE ENGINEERING, INC.
ENGINEERS, PLANNERS, & SURVEYORS
3670 QUINCY AVE., SUITE NO. 1
OGDEN, UTAH 84403
(801) 621-3100 FAX (801) 621-2666

44-16

44-16