

**NARRATIVE**

THE PURPOSE OF THIS SURVEY PLAT IS TO REESTABLISH THE BOUNDARY LINES OF THE PROPERTY OWNED BY DON GLEN HULL AND HIS WIFE WHICH ABUTS 1700 NORTH STREET IN THE CITY OF NORTH OGDEN. THE PROPERTY IS LISTED UNDER THE FOLLOWING TAX ID NUMBERS: 11-004-0008, 11-004-0099, 11-004-0000.

IN ADDITION TO THE DEEDS RELATING TO THE SUBJECT PROPERTY AND ITS ADJACENTS THE FOLLOWING SURVEY AND SUBDIVISION PLATS WERE ALSO USED TO ESTABLISH THE STREETS AND BOUNDARY LINES IN THIS VICINITY:

1700 NORTH STREET ALIGNMENT - BOOK 40, PAGE 12, OFFICIAL RECORDS WEBER COUNTY RECORDERS OFFICE.

GREENFIELD SUBDIVISION PHASE 1 - BOOK 26, PAGE 66, OFFICIAL RECORDS WEBER COUNTY RECORDERS OFFICE.

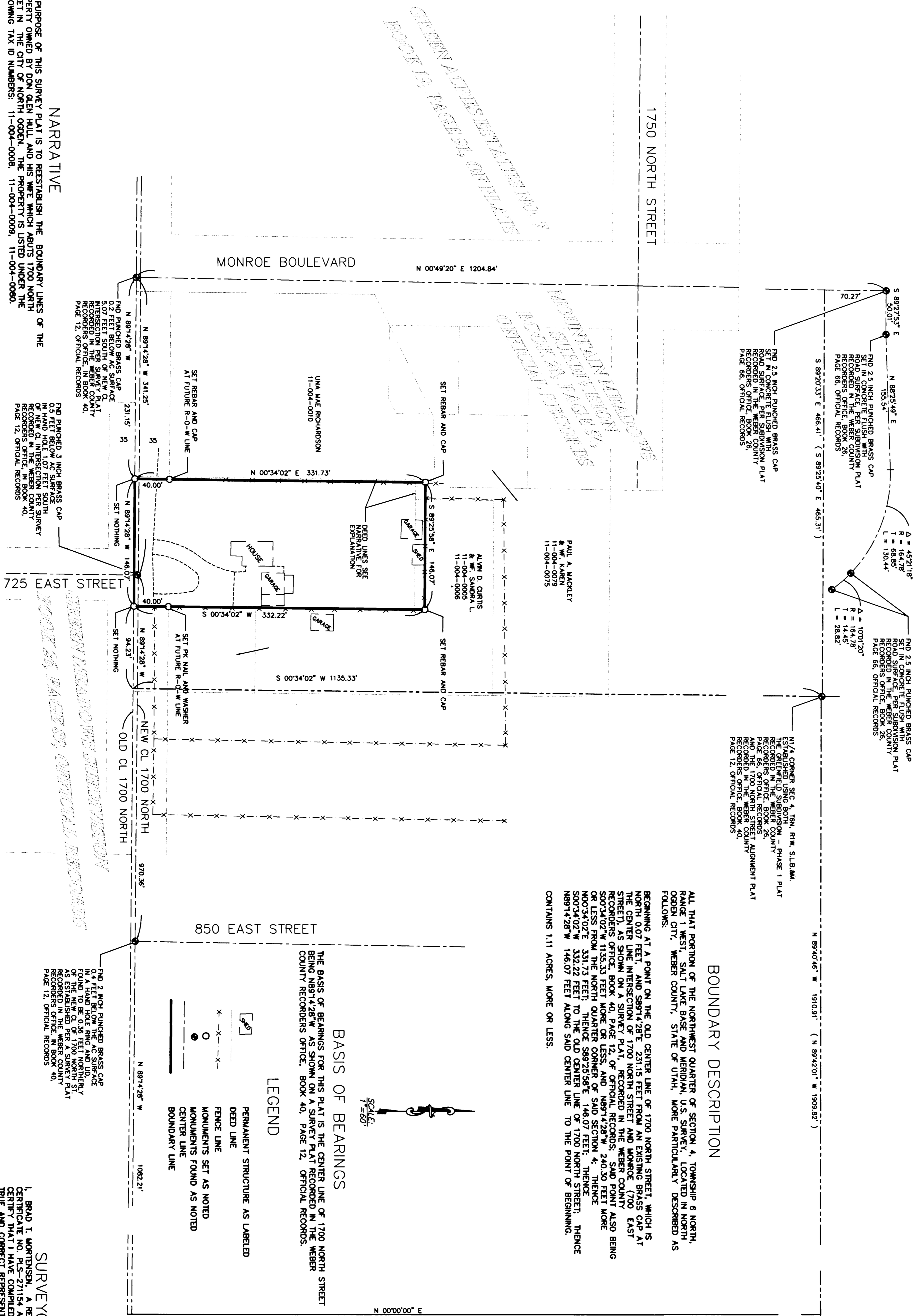
GREEN MEADOWS SUBDIVISION - BOOK 26, PAGE 89, OFFICIAL RECORDS WEBER COUNTY RECORDERS OFFICE.

GREEN ACRES ESTATES NO. 7 - BOOK 19, PAGE 91, OFFICIAL RECORDS WEBER COUNTY RECORDERS OFFICE.

MOUNTAIN MEADOWS SUBDIVISION - BOOK 28, PAGE 54, OFFICIAL RECORDS WEBER COUNTY RECORDERS OFFICE.

MOST OF THE DEEDS WERE CALLED OFF THE NORTH QUARTER CORNER OF THE SECTION. THIS CORNER HAS BEEN DESTROYED, BUT CAN BE RETRACED BY USING THE ABOVE MENTIONED PLATS. THE DEEDS WERE CALLED OFF THE CORNER OF THE SECTION AND COULD BE LOCATED ON THE GROUND MORE CLOSELY BY USING THE DEED CALLS AND THE SUBDIVISION LINES BASED ON THE EXISTING MONUMENTS FOUND ON 1700 NORTH STREET AND MONROE.

THE NORTH AND WEST DEED LINES OF THE SUBJECT PROPERTY DID NOT MATCH THE USE AND OCCUPATION LINES OF THE GROUND, BUT BY FURTHER INVESTIGATION AND CONVERSATIONS WITH THE LAND OWNERS, DON GLEN HULL AND HIS WIFE, THE BOUNDARY LINES ALONG THE NORTH AND WEST DEED LINES OF THE SUBJECT PROPERTY WERE FOUND TO BE CORRECT. THEREFORE PARALLEL LINES WERE RUN OFF THE DEED LINES THROUGH THESE FENCE LINES TO REESTABLISH THE NORTH AND WEST BOUNDARY LINES OF THE SUBJECT PROPERTY.

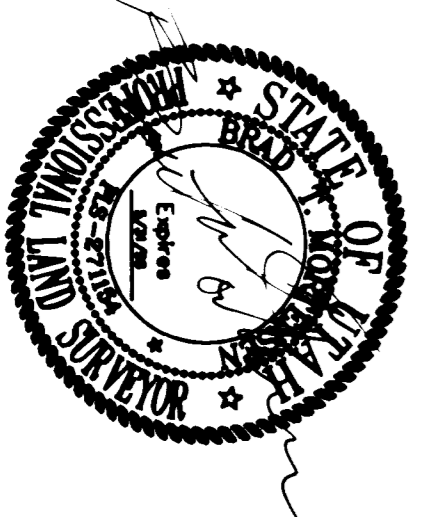


**SURVEYOR'S CERTIFICATE**

I, BRAD T. WORTHEN, A REGISTERED PROFESSIONAL LAND SURVEYOR HOLDING CERTIFICATE NO. 115-271154 AS PRESCRIBED BY THE STATE OF UTAH, DO HEREBY CERTIFY THAT I HAVE COMPLETED THIS SURVEY PLAT IN ACCORDANCE WITH THE REQUIREMENTS OF THE UTAH SURVEYING ACT AND THE UTAH SURVEYING BOARD. THE WEBER COUNTY RECORDERS OFFICE AND A SURVEY MADE ON THE GROUND.

SIGNED THIS 30TH DAY OF NOVEMBER, 1997

RECEIVED  
DEC 01 1997  
Weber County Surveyor



**RECORD OF SURVEY**  
FOR THE HULL PROPERTY

A PART OF NW 1/4 OF SEC. 4, T6N, R1W, SLB&M, U.S. SURVEY  
NORTH OGDEN CITY, WEBER COUNTY, UTAH

DRAWN BY: \_\_\_\_\_ DATE: \_\_\_\_\_  
DESIGNED BY: \_\_\_\_\_  
CHECKED BY: \_\_\_\_\_  
APPROVED BY: \_\_\_\_\_  
SCALE: \_\_\_\_\_  
DRAWING FILE: \_\_\_\_\_  
JOB NUMBER: \_\_\_\_\_

BMI ASSOCIATES SURVEYING & ENGINEERING, LLC.  
34 EAST 200 NORTH  
KAYSVILLE, UTAH 84037  
  
(801) 546-7462  
FAX (801) 546-1216

NO.	DATE	BY	REVISION