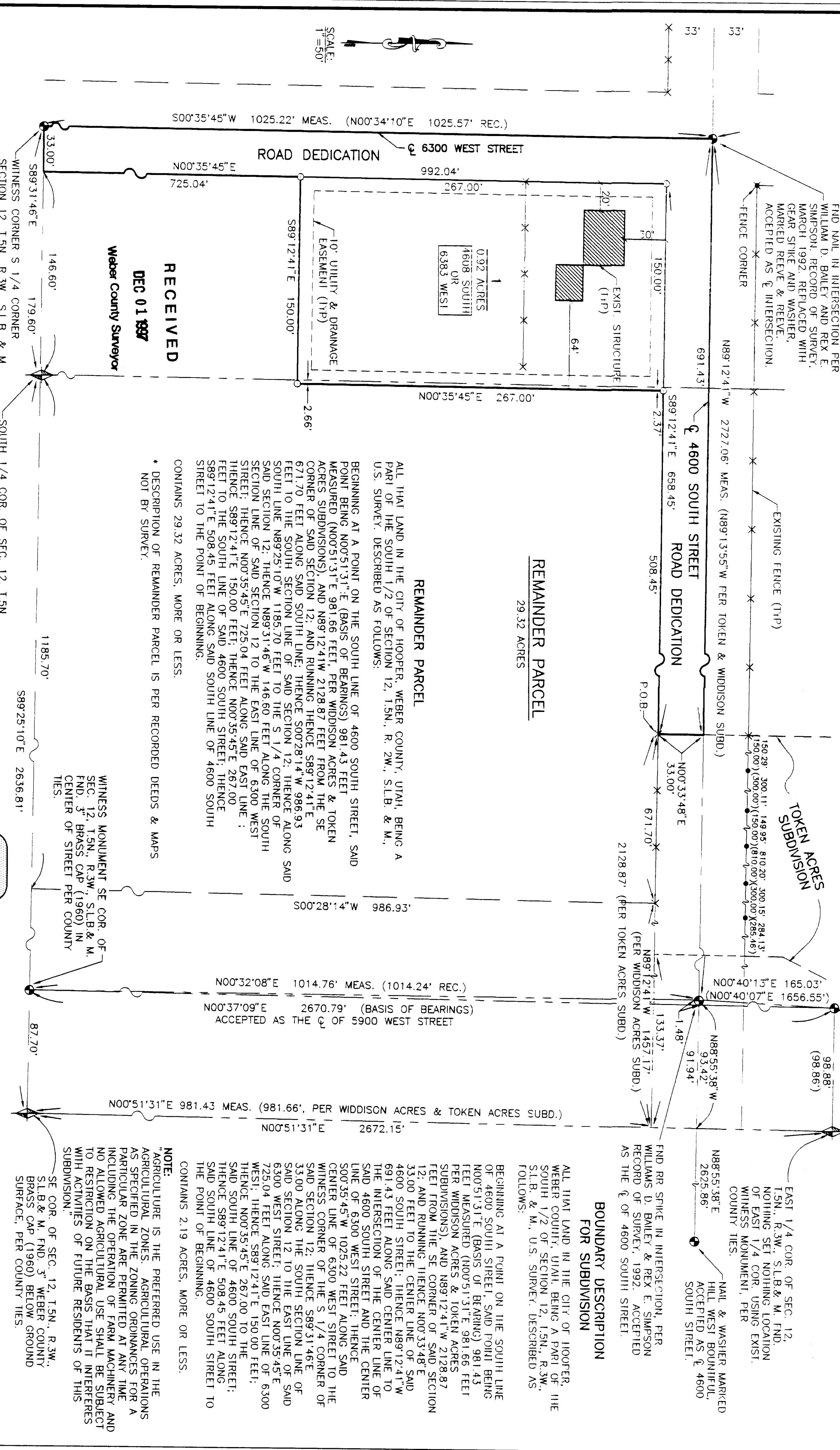


85-04

# THOMAS S. LOWE SUBDIVISION

PART OF THE SOUTH 1/2 OF SEC. 12, T. 5N., R. 3W., S.L.B. & M., U.S. SURVEY  
HOOPER DISTRICT, WEBER COUNTY, UTAH  
SEPTEMBER, 1995



**LEGEND**

- = FIND AS NOTED
- = SET 5/8" REBAR & CAP MARKER REVEAL & REVEAL
- = PER TOKEN ACRES SUBDIVISION
- = SECTION CORNER AS NOTED

**WEBER COUNTY PLANNING COMMISSION APPROVAL**

THIS IS TO CERTIFY THAT THIS SUBDIVISION PLAN WAS DULY APPROVED BY THE WEBER COUNTY PLANNING COMMISSION ON MARCH 19, 1995.

*Chairman, Weber County Planning Commission*

**WEBER COUNTY ENGINEER**

I HEREBY CERTIFY THAT THE REQUIRED PUBLIC IMPROVEMENT STANDARDS AND DIMENSIONS FOR THIS SUBDIVISION CONFORM WITH COUNTY STANDARDS AND THE AMOUNT OF THE FINANCIAL GUARANTEE IS SUFFICIENT FOR THE INSTALLATION OF THESE IMPROVEMENTS.

SIGNED THIS 6th DAY OF SEPTEMBER, 1995.

*State Engineer*

**WEBER COUNTY COMMISSION ACCEPTANCE**

THIS IS TO CERTIFY THAT THIS SUBDIVISION PLAN, THE DEDICATION OF STREETS AND OTHER PUBLIC IMPROVEMENTS, AND THE FINANCIAL GUARANTEE HEREBY APPROVED AND ACCEPTED BY THE COMMISSIONERS OF WEBER COUNTY, UTAH, THIS 19th DAY OF SEPTEMBER, 1995.

*Chairman, Weber County Commission*

**WEBER COUNTY SURETY**

I HEREBY CERTIFY THAT I HAVE INVESTIGATED THE SURVEY OF THE ABOVE DESCRIBED SUBDIVISION AND THE LEGAL DESCRIPTION THEREOF AND I AM Satisfied THAT THE SAME IS CORRECT AND ACCURATE.

SIGNED THIS 19th DAY OF SEPTEMBER, 1995.

*State Surveyor*

**WEBER COUNTY ATTORNEY**

I HAVE EXAMINED THE FINANCIAL GUARANTEE AND OTHER DOCUMENTS ASSOCIATED WITH THIS SUBDIVISION PLAN AND IN MY OPINION THEY CONFORM WITH THE COUNTY INDEMNITY ACT AND ARE SUFFICIENT TO PROTECT THE COUNTY AGAINST ANY AND ALL CLAIMS THAT MAY BE ASSERTED AGAINST THE COUNTY BY ANY PERSON WHO MAY BE INJURED BY THE INSTALLATION OF THESE IMPROVEMENTS.

SIGNED THIS 19th DAY OF SEPTEMBER, 1995.

*County Attorney*

**WEBER COUNTY RECORDER**

ENTRY NO. 40580, FEE PAID \$30.00. FILED FOR RECORD AND RECORDED IN BOOK AND INDEX OF THE OFFICE OF THE COUNTY RECORDER, WEBER COUNTY, UTAH, THIS 19th DAY OF SEPTEMBER, 1995.

RECORDED FOR: LOUISE BISHAWANA

BY: [Signature]

**SURVEYOR'S CERTIFICATE**

I, JOHN P. BEVE, A REGISTERED PROFESSIONAL SURVEYOR IN THE STATE OF UTAH, DO HEREBY CERTIFY THAT THIS PLAT OF THE THOMAS S. LOWE SUBDIVISION, PART OF THE SOUTH 1/2 OF SECTION 12, T. 5N., R. 3W., S.L.B. & M., U.S. SURVEY, HOOPER DISTRICT, WEBER COUNTY, UTAH, WAS PREPARED BY ME OR UNDER MY CLOSE PERSONAL SUPERVISION AND THAT I AM A MEMBER OF THE NATIONAL SOCIETY OF PROFESSIONAL SURVEYORS AND THE UTAH SOCIETY OF PROFESSIONAL SURVEYORS. I HAVE EXAMINED THE ORIGINAL FIELD NOTES AND ALL OTHER DATA RELATIVE TO THIS SURVEY AND I AM Satisfied THAT THE SAME IS CORRECT AND ACCURATE. I HAVE ALSO EXAMINED THE FINANCIAL GUARANTEE AND OTHER DOCUMENTS ASSOCIATED WITH THIS SUBDIVISION PLAN AND I AM Satisfied THAT THE SAME IS SUFFICIENT TO PROTECT THE COUNTY AGAINST ANY AND ALL CLAIMS THAT MAY BE ASSERTED AGAINST THE COUNTY BY ANY PERSON WHO MAY BE INJURED BY THE INSTALLATION OF THESE IMPROVEMENTS.

SIGNED THIS 22nd DAY OF SEPTEMBER, 1995.

22-14666-3201  
UTAH LICENSE NUMBER

*John P. Beve*

REGISTERED LAND SURVEYOR  
22714666-2201  
JOHN P. BEVE  
STATE OF UTAH

**OWNER'S DEDICATION AND CERTIFICATION**

WE, THE UNDERSIGNED OWNERS OF THE HEREIN DESCRIBED TRACT OF LAND, DO HEREBY DEDICATE AND AGREE TO HOLD THE TRACT OF LAND AS SHOWN ON THIS PLAT, AND HAVE SAID THAT THE SAME IS TO BE USED AS A PUBLIC HIGHWAY AND TO BE AVAILABLE TO THE PUBLIC AT ALL TIMES AND TO BE AVAILABLE TO THE PUBLIC AT ALL TIMES AND TO BE AVAILABLE TO THE PUBLIC AT ALL TIMES. WE HEREBY CERTIFY THAT WE HAVE NO BUILDINGS OR STRUCTURES BEING ERECTED WITHIN SUCH EASEMENTS.

SIGNED THIS 21st DAY OF SEPTEMBER, 1995.

*John S. Lowe*

*Thomas S. Lowe*

*John P. Beve*

**ACKNOWLEDGEMENT**

STATE OF UTAH, )  
COUNTY OF WEBER, )  
I, the undersigned, )  
do hereby certify that )  
the above described )  
tract of land is )  
being dedicated )  
to the public use )  
and that the same )  
is to be available )  
to the public at )  
all times.

SIGNED THIS 21st DAY OF SEPTEMBER, 1995.

*John S. Lowe*

*Thomas S. Lowe*

*John P. Beve*