

DRAWING NUMBER
001797

PLAN HOLD CORPORATION • IRVINE, CALIFORNIA
REORDER BY NUMBER 075AR
POSITION EDGE OF PRINT ON THIS LINE

DRAWING NUMBER
001797

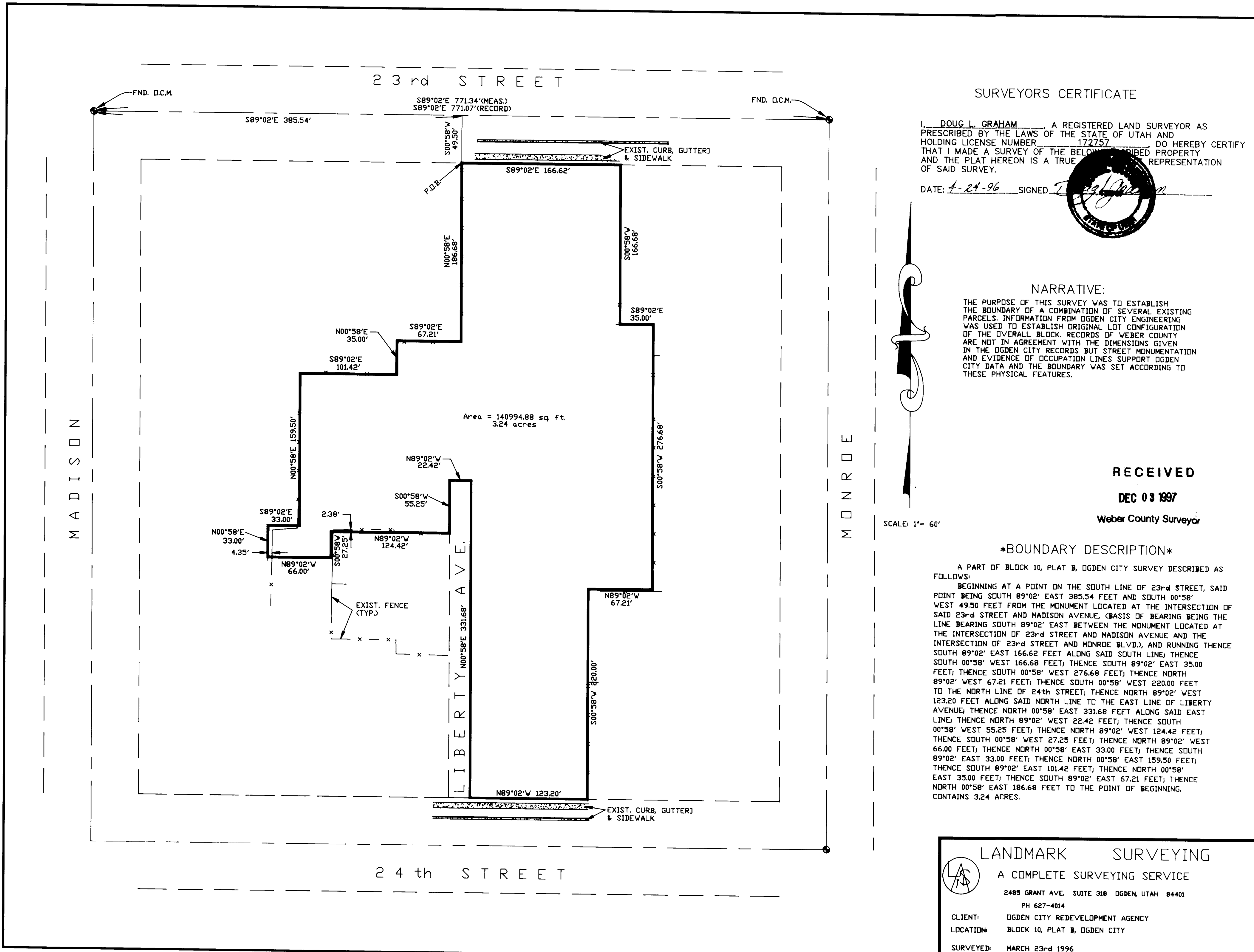
PLAN HOLD CORPORATION • IRVINE, CALIFORNIA
REORDER BY NUMBER 075AR
POSITION EDGE OF PRINT ON THIS LINE

DRAWING NUMBER
001797

PLAN HOLD CORPORATION • IRVINE, CALIFORNIA
REORDER BY NUMBER 075AR
POSITION EDGE OF PRINT ON THIS LINE

DRAWING NUMBER
001797

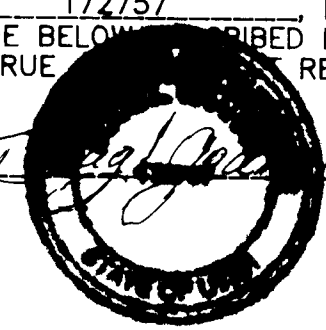
PLAN HOLD CORPORATION • IRVINE, CALIFORNIA
REORDER BY NUMBER 075AR
POSITION EDGE OF PRINT ON THIS LINE



SURVEYORS CERTIFICATE

I, DOUG L. GRAHAM, A REGISTERED LAND SURVEYOR AS PRESCRIBED BY THE LAWS OF THE STATE OF UTAH AND HOLDING LICENSE NUMBER 172757 DO HEREBY CERTIFY THAT I MADE A SURVEY OF THE BELOW DESCRIBED PROPERTY AND THE PLAT HEREON IS A TRUE REPRESENTATION OF SAID SURVEY.

DATE: 1-24-96 SIGNED: [Signature]



NARRATIVE:

THE PURPOSE OF THIS SURVEY WAS TO ESTABLISH THE BOUNDARY OF A COMBINATION OF SEVERAL EXISTING PARCELS. INFORMATION FROM OGDEN CITY ENGINEERING WAS USED TO ESTABLISH ORIGINAL LOT CONFIGURATION OF THE OVERALL BLOCK. RECORDS OF WEBER COUNTY ARE NOT IN AGREEMENT WITH THE DIMENSIONS GIVEN IN THE OGDEN CITY RECORDS BUT STREET MONUMENTATION AND EVIDENCE OF OCCUPATION LINES SUPPORT OGDEN CITY DATA AND THE BOUNDARY WAS SET ACCORDING TO THESE PHYSICAL FEATURES.

RECEIVED
DEC 03 1997
Weber County Surveyor

BOUNDARY DESCRIPTION

A PART OF BLOCK 10, PLAT B, OGDEN CITY SURVEY DESCRIBED AS FOLLOWS:
BEGINNING AT A POINT ON THE SOUTH LINE OF 23rd STREET, SAID POINT BEING SOUTH 89°02' EAST 385.54 FEET AND SOUTH 00°58' WEST 49.50 FEET FROM THE MONUMENT LOCATED AT THE INTERSECTION OF SAID 23rd STREET AND MADISON AVENUE, (BASIS OF BEARING BEING THE LINE BEARING SOUTH 89°02' EAST BETWEEN THE MONUMENT LOCATED AT THE INTERSECTION OF 23rd STREET AND MADISON AVENUE AND THE INTERSECTION OF 23rd STREET AND MONROE BLVD.), AND RUNNING THENCE SOUTH 89°02' EAST 166.62 FEET ALONG SAID SOUTH LINE; THENCE SOUTH 00°58' WEST 166.68 FEET; THENCE SOUTH 89°02' EAST 35.00 FEET; THENCE SOUTH 00°58' WEST 276.68 FEET; THENCE NORTH 89°02' WEST 67.21 FEET; THENCE SOUTH 00°58' WEST 220.00 FEET TO THE NORTH LINE OF 24th STREET; THENCE NORTH 89°02' WEST 123.20 FEET ALONG SAID NORTH LINE TO THE EAST LINE OF LIBERTY AVENUE; THENCE NORTH 00°58' EAST 331.68 FEET ALONG SAID EAST LINE; THENCE NORTH 89°02' WEST 22.42 FEET; THENCE SOUTH 00°58' WEST 55.25 FEET; THENCE NORTH 89°02' WEST 124.42 FEET; THENCE SOUTH 00°58' WEST 27.25 FEET; THENCE NORTH 89°02' WEST 66.00 FEET; THENCE NORTH 00°58' EAST 33.00 FEET; THENCE SOUTH 89°02' EAST 33.00 FEET; THENCE NORTH 00°58' EAST 159.50 FEET; THENCE SOUTH 89°02' EAST 101.42 FEET; THENCE NORTH 00°58' EAST 35.00 FEET; THENCE SOUTH 89°02' EAST 67.21 FEET; THENCE NORTH 00°58' EAST 186.68 FEET TO THE POINT OF BEGINNING. CONTAINS 3.24 ACRES.

LANDMARK SURVEYING
A COMPLETE SURVEYING SERVICE
2485 GRANT AVE. SUITE 318 OGDEN, UTAH 84401
PH 627-4014
CLIENT: OGDEN CITY REDEVELOPMENT AGENCY
LOCATION: BLOCK 10, PLAT B, OGDEN CITY
SURVEYED: MARCH 23rd 1996