

DRAWING NUMBER  
001801

PLAN HOLD CORPORATION • IRVINE, CALIFORNIA  
REORDER BY NUMBER 075AR  
POSITION EDGE OF PRINT ON THIS LINE

DRAWING NUMBER  
001801

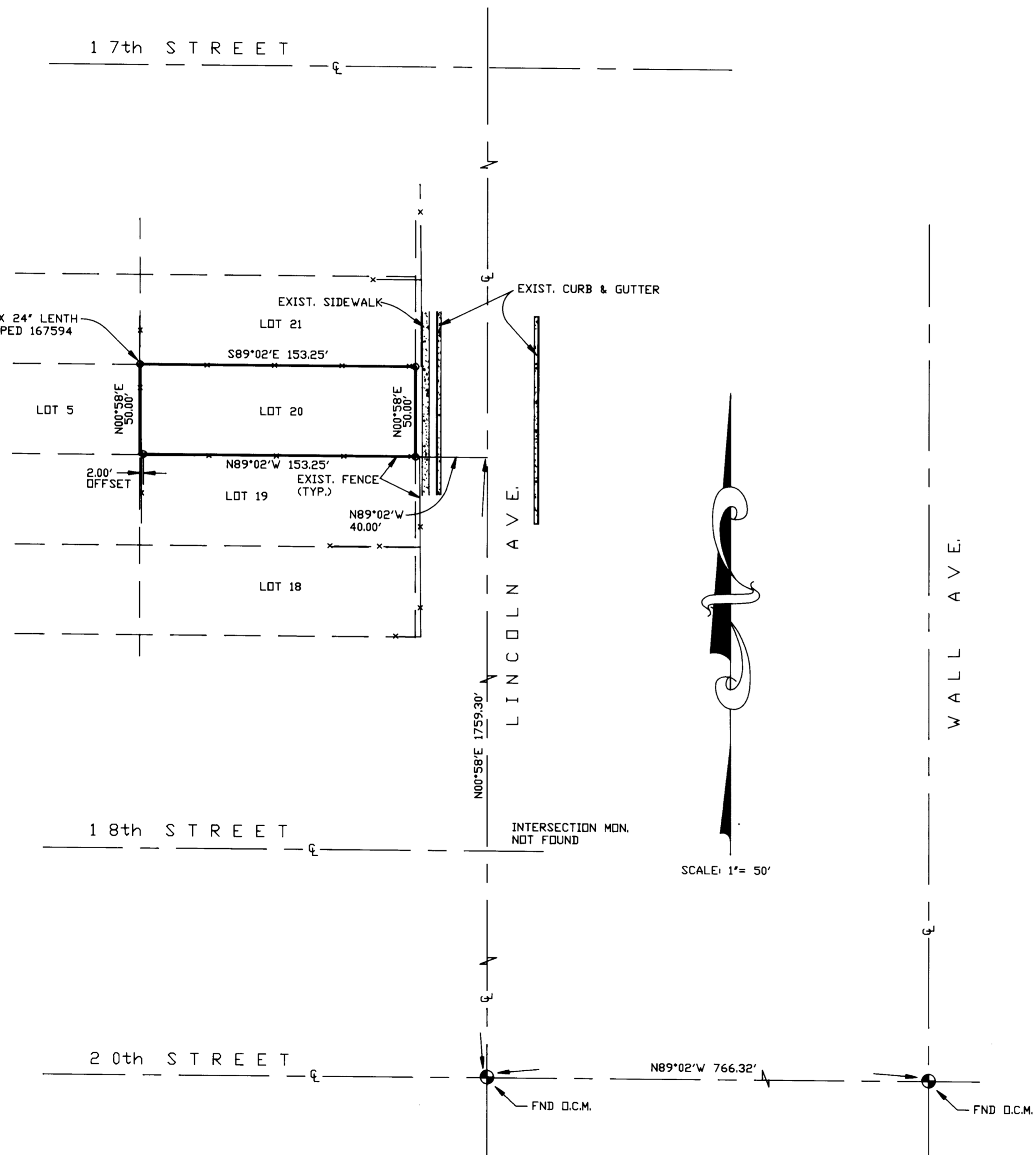
PLAN HOLD CORPORATION • IRVINE, CALIFORNIA  
REORDER BY NUMBER 075AR  
POSITION EDGE OF PRINT ON THIS LINE

DRAWING NUMBER  
001801

PLAN HOLD CORPORATION • IRVINE, CALIFORNIA  
REORDER BY NUMBER 075AR  
POSITION EDGE OF PRINT ON THIS LINE

DRAWING NUMBER  
001801

PLAN HOLD CORPORATION • IRVINE, CALIFORNIA  
REORDER BY NUMBER 075AR  
POSITION EDGE OF PRINT ON THIS LINE



SURVEYORS CERTIFICATE

DOUG L. GRAHAM, A REGISTERED LAND SURVEYOR AS PRESCRIBED BY THE LAWS OF THE STATE OF UTAH AND HOLDING LICENSE NUMBER 172757, DO HEREBY CERTIFY THAT I MADE A SURVEY OF THE BELONGING PROPERTY AND THE PLAT HEREON IS A TRUE REPRESENTATION OF SAID SURVEY.

DATE: 4-24-96 SIGNED [Signature]



NARRATIVE:

THE PURPOSE OF THIS SURVEY WAS TO ESTABLISH THE PROPERTY CORNERS OF LOT 20. DUE TO THE ABSENCE OF OGDEN CITY MONUMENTATION THAT WOULD DETERMINE THE LIMITS OF THE BLOCK, OCCUPATION LINES WERE USED TO RESOLVE THE LOT LOCATION. FENCE OCCUPATIONS WERE TYPICALLY 1.10 TO 1.15 FEET SOUTH OF THE RECORD LOCATION FROM THE INTERSECTION MONUMENT AT 20th STREET AND LINCOLN AVENUE, THOUGH THE LOCATIONS OF IMPROVEMENTS AND OCCUPATIONS ARE ACCURATE IN AN EAST AND WEST OFFSET FROM THE PROJECTED CENTERLINE OF LINCOLN. MY CONCLUSION IS THAT THE CORRECT LOCATION FOR THE INTERSECTION OF 18th AND 17th AT LINCOLN AVENUE IS N00°58'E 1.14 FEET FROM THE RECORD DISTANCE FROM 20th STREET AND THE PROPERTY CORNERS WERE SET BASED UPON THIS.

\*BOUNDARY DESCRIPTION\*

ALL OF LOT 20, BLOCK 1, FORESTDALE ADDITION, OGDEN CITY, WEBER COUNTY, UTAH.

RECEIVED  
DEC 03 1997  
Weber County Surveyor

001801

001801

LANDMARK SURVEYING  
A COMPLETE SURVEYING SERVICE  
2485 GRANT AVE. SUITE 318 OGDEN, UTAH 84401  
PH 627-4014  
CLIENT: OGDEN CITY REDEVELOPMENT AGENCY  
LOCATION: 1723 LINCOLN  
SURVEYED: 4-16-96